



Manuals.plus /

› Alpicool /

› Alpicool Portable Refrigerator User Manual

## Alpicool ZGW51

# Alpicool Portable Refrigerator User Manual

Model: ZGW51

Brand: Alpicool

## PRODUCT OVERVIEW

The Alpicool Portable Refrigerator (Model ZGW51) is a versatile and efficient cooling solution designed for various indoor and outdoor applications, including car use, camping, and road trips. Featuring a spacious 52-quart capacity and dual-zone independent temperature control, it allows for flexible use as a refrigerator, freezer, or a combination of both. Its robust design includes retractable handles and durable off-road wheels for enhanced portability.



*Figure 1: Alpicool Portable Refrigerator, 52QT capacity, shown with various beverages and fruits inside.*

## SETUP

### Unboxing and Initial Inspection

Upon receiving your Alpicool Portable Refrigerator, carefully remove all packaging materials. Verify that all included components are present:

- 52 Quarts Portable Refrigerator ZGW51
- User Manual
- 12V / 24V DC Power Cord
- 110V~240V AC Adapter and Power Cord

Inspect the unit for any signs of damage during transit. If any damage is found, contact customer support immediately.

## Power Supply Options

The refrigerator offers multiple power options for versatile use:

- **110/240V AC:** Use the provided AC adapter and power cord for household outlets.
- **12V/24V DC:** Use the provided DC power cord for vehicle cigarette lighter sockets.
- **Solar Panels:** Can be connected to a portable power station for charging during outdoor camping (solar panels and power station sold separately).



Figure 2: Illustration of two ways to power the Alpicool refrigerator: AC Power and DC Power.

## Lid Reversibility

The removable lid is designed to change opening directions based on your preference. To reverse the lid:

1. Open the lid to a 90-degree angle.
2. Gently pull up to detach the lid from its hinges.
3. Re-install the lid on the opposite side at a 90-degree angle, ensuring it clicks securely into place.



Figure 3: Detachable 2-Way Door design for flexible opening directions.

## Portability Features

The refrigerator is equipped with retractable handles and durable off-road wheels for easy transport. The retractable handle extends to approximately 35 inches, allowing for comfortable pulling. Integrated cup slots on the lid provide convenience for holding beverages.

# EASY TO CARRY



Retractable Handle



Off-road Wheels



Cup Slot

Figure 4: Easy to carry features including retractable handle and off-road wheels.

## OPERATING INSTRUCTIONS

### Dual Zone Independent Control

The refrigerator features dual-zone and dual-control technology, allowing independent temperature settings for each compartment. Temperatures can be set from 68°F (20°C) down to -4°F (-20°C). You can configure the zones as:

- Freezer / Fridge
- Fridge / Freezer
- Freezer / Freezer
- Fridge / Fridge

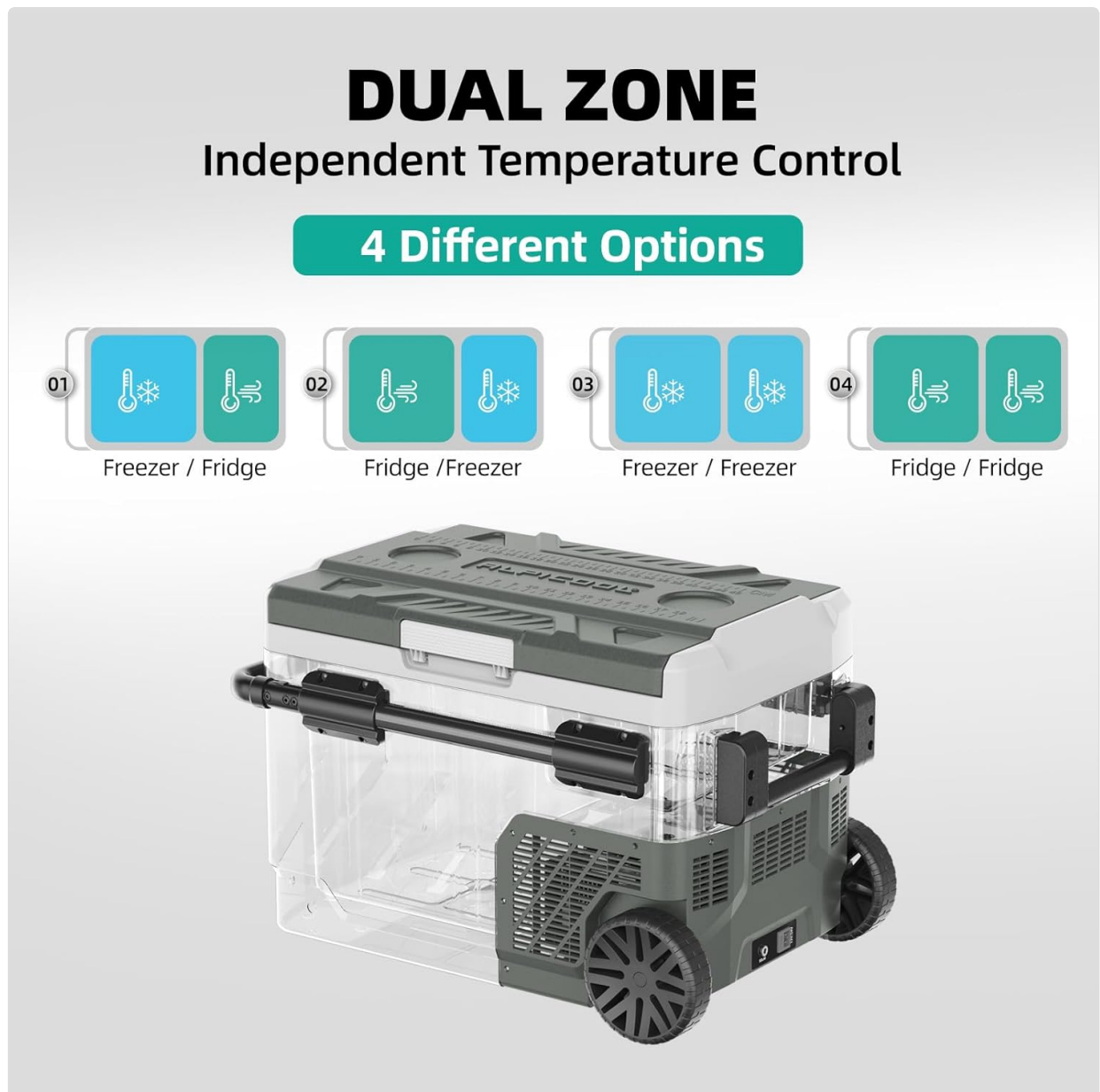


Figure 5: Four different options for dual zone independent temperature control.

### Temperature Control and Modes

The LED HD display screen allows for precise temperature adjustments. The portable fridge can achieve fast cooling to 32°F (0°C) within 15 minutes and reach -4°F (-20°C) within 50 minutes.

- **Increase/Decrease Temperature:** Use the '+' and '-' buttons on the control panel.
- **ECO Mode (45W):** For energy saving.
- **MAX Mode (60W):** For quick cooling.

## LED HD DISPLAY SCREEN With temperature memory



Figure 6: LED HD Display Screen with temperature memory and USB charging port.

### Battery Protection

The refrigerator features three levels of battery voltage protection (H/M/L) to prevent draining your vehicle's battery. The system automatically stops operation when it detects low battery voltage, responding to different startup and shutdown voltages.



Figure 7: Battery Voltage Protection levels (High, Medium, Low).

## Low Noise Operation

Due to its high-quality compressor, the refrigerator provides a quiet working environment, operating under 45dB. This ensures minimal disturbance during use, even in quiet settings like camping or sleeping in a vehicle.

## Detachable 2-Way Door

Two opening directions are applicable for different customers with different usage habits.

You will just need to open the lid at a 90° angle, and pull up, the lid will be detached and install it on the opposite side at the same 90° angle.

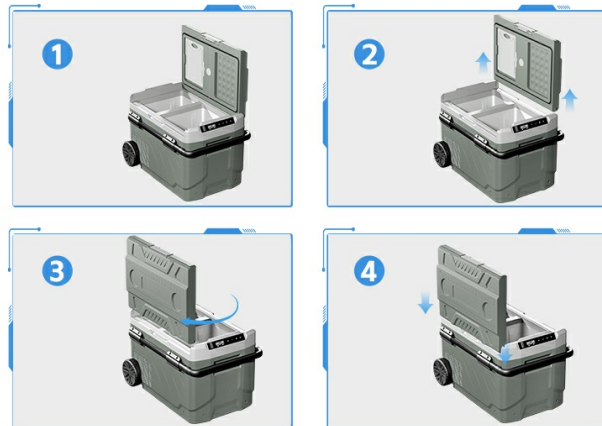


Figure 8: Comparison of noise levels, highlighting the refrigerator's quiet operation.

## USB Charging Port

The control panel includes a USB charging port, allowing you to conveniently charge your mobile devices while the refrigerator is in operation.

## MAINTENANCE

### Cleaning

The refrigerator is designed for easy cleaning. It features a drain plug at the bottom, allowing you to easily rinse out the interior and drain any accumulated water or spills. This is particularly useful for maintaining hygiene after storing various food items or if ice melts.

### Storage

When not in use for extended periods, ensure the refrigerator is clean and dry. Store it in a cool, dry place away from direct sunlight and extreme temperatures.

## TROUBLESHOOTING

If you encounter issues with your Alpicool Portable Refrigerator, refer to the following common troubleshooting tips:

- **Temperature Inconsistencies:** Ensure the lid is properly sealed and not obstructed. Check that the ambient temperature is within the recommended operating range. Verify that the dual-zone settings are correctly configured for your needs.
- **Power Issues:** If the unit is not powering on, check the power source (AC outlet, DC socket, or portable power station) for proper connection and functionality. Ensure the battery protection level is not set too high, which might cause the unit to shut off prematurely if vehicle battery voltage drops.
- **Excessive Noise:** While designed for low noise, ensure the unit is placed on a stable, flat surface to prevent vibrations. Check that the ventilation grilles are not blocked, allowing for proper airflow.

For more detailed troubleshooting or persistent issues, please contact Alpicool customer support.

## SPECIFICATIONS

Feature	Detail
Brand Name	Alpicool
Model Info	ZGW51
Item Weight	38.6 pounds
Product Dimensions	27.25 x 17.83 x 20.28 inches
Capacity	52 Quarts (49 Liters)
Annual Energy Consumption	91 Kilowatt Hours Per Year
Installation Type	Freestanding
Special Features	Energy Efficient, Portable, App Control, Large Capacity, Low Noise
Color	Green
Voltage	12 Volts (DC)
Defrost System	Frost Free
Door Hinges	Reversible
Material Type	High Density Polyethylene (HDPE)
Certification	Energy Star

## WARRANTY & SUPPORT

Alpicool provides comprehensive support for its products:

- **Compressor Warranty:** 3-year warranty.
- **Other Accessories Warranty:** 1-year warranty.
- **Customer Service:** For further questions or after-sale service, please contact Alpicool's professional support team.

## **OFFICIAL PRODUCT VIDEOS**

Below are official product videos from the seller, providing additional visual guidance and information.

### **Take a look of the using experience for one month**

*This video provides a detailed review of the Alpicool Portable Refrigerator after one month of use, highlighting its features and performance in various scenarios.*

### **ZGW Series Testing and Overview**

*An in-depth overview and testing of the ZGW series portable refrigerators, demonstrating their capabilities and operational aspects.*