

PULITUO B0CTPL35JM

PULITUO 2-in-1 20V Cordless Leaf Blower and Vacuum Instruction Manual

Model: B0CTPL35JM

1. INTRODUCTION

Thank you for choosing the PULITUO 2-in-1 20V Cordless Leaf Blower and Vacuum. This versatile tool is designed for efficient outdoor and indoor cleaning tasks, offering both blowing and vacuuming functionalities, along with an inflation feature. Its cordless design provides freedom of movement, making it ideal for various applications from lawn care to dust removal.

2. SAFETY INSTRUCTIONS

Read all safety warnings and instructions before operating this product.

- Always wear appropriate personal protective equipment (PPE), including eye protection, hearing protection, and gloves.
- Keep children and bystanders away while operating the tool.
- Do not operate the tool in wet conditions or in the presence of flammable liquids or gases.
- Ensure the battery is fully charged before use and remove it when not in use or during maintenance.
- Never point the blower nozzle at people or animals.
- Inspect the tool for any damage before each use. Do not operate if damaged.

3. PACKAGE CONTENTS

- PULITUO 2-in-1 Blower/Vacuum Unit
- 2 x 20V Lithium-Ion Batteries
- Battery Charger
- Blower Nozzle (long)
- Vacuum Hose
- Dust Collection Bag
- Flat Nozzle (for vacuum/blower)

- Round Nozzle (for vacuum/blower)
- 3-in-1 Inflation Nozzle Set
- User Manual



Figure 3.1: All components included with the PULITUO 2-in-1 Cordless Leaf Blower and Vacuum.

4. PRODUCT OVERVIEW

Familiarize yourself with the main parts of your PULITUO 2-in-1 tool for optimal use.



Figure 4.1: Main unit and accessories of the PULITUO 2-in-1 Cordless Leaf Blower and Vacuum.

5. SETUP

5.1. Battery Installation and Charging

- To install the battery, align the battery pack with the battery port on the main unit and slide it in until it clicks into place.
- To remove, press the battery release button and slide the battery out.
- To charge, connect the charger to a power outlet and insert the battery into the charger. The indicator light on the charger will show charging status.



Figure 5.1: Battery installation on the main unit.

5.2. Blower Function Assembly

- Attach the long blower pipe to the air outlet on the front of the main unit. Ensure it clicks securely.
- For extended reach or specific tasks, attach the additional nozzle to the end of the blower pipe.



Figure 5.2: Blower function assembly steps.

5.3. Vacuum Function Assembly

- Connect the vacuum hose to the air intake port (side opening) of the main unit.
- Attach the dust collection bag to the air outlet (front opening) of the main unit.

- Select and attach the desired nozzle (flat or round) to the end of the vacuum hose.



Figure 5.3: Vacuum function assembly steps.

5.4. Inflation Function Assembly

- Attach the inflation fitting to the circular interface on the right side of the main unit.
- Select the appropriate nozzle from the 3-in-1 inflation nozzle set for the item you wish to inflate.



Figure 5.4: Inflation function in use.

6. OPERATING INSTRUCTIONS

6.1. Powering On/Off and Speed Control

- Insert a charged battery into the unit.
- Press the power button to turn the unit on.
- Use the speed control switch (if available) to adjust the airflow intensity.
- To engage the self-locking switch for continuous operation, press the left round button after starting the unit. This reduces hand fatigue.
- Press the power button again to turn the unit off.



Figure 6.1: Engaging the trigger lock for continuous operation.

6.2. Blower Mode Operation

- Ensure the blower pipe is securely attached.
- Direct the nozzle towards leaves, debris, or dust you wish to clear.
- Maintain a comfortable distance from the surface to effectively move materials.

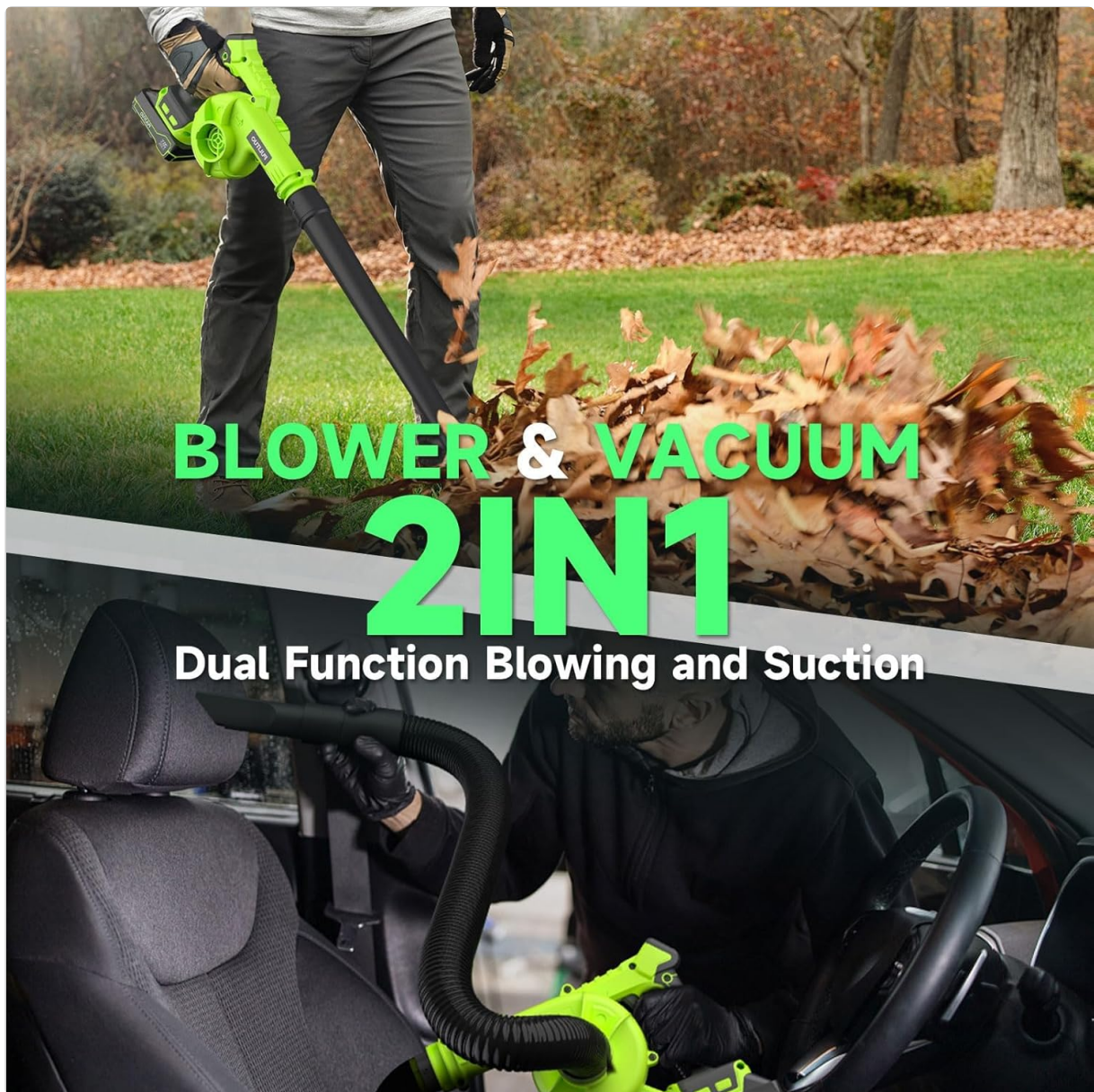


Figure 6.2: Using the tool in blower mode for outdoor cleaning.

6.3. Vacuum Mode Operation

- Confirm the vacuum hose and dust collection bag are correctly installed.
- Position the vacuum nozzle over the material to be collected.
- Move the nozzle slowly over the area to allow for effective suction.
- Empty the dust bag regularly to maintain optimal suction performance.

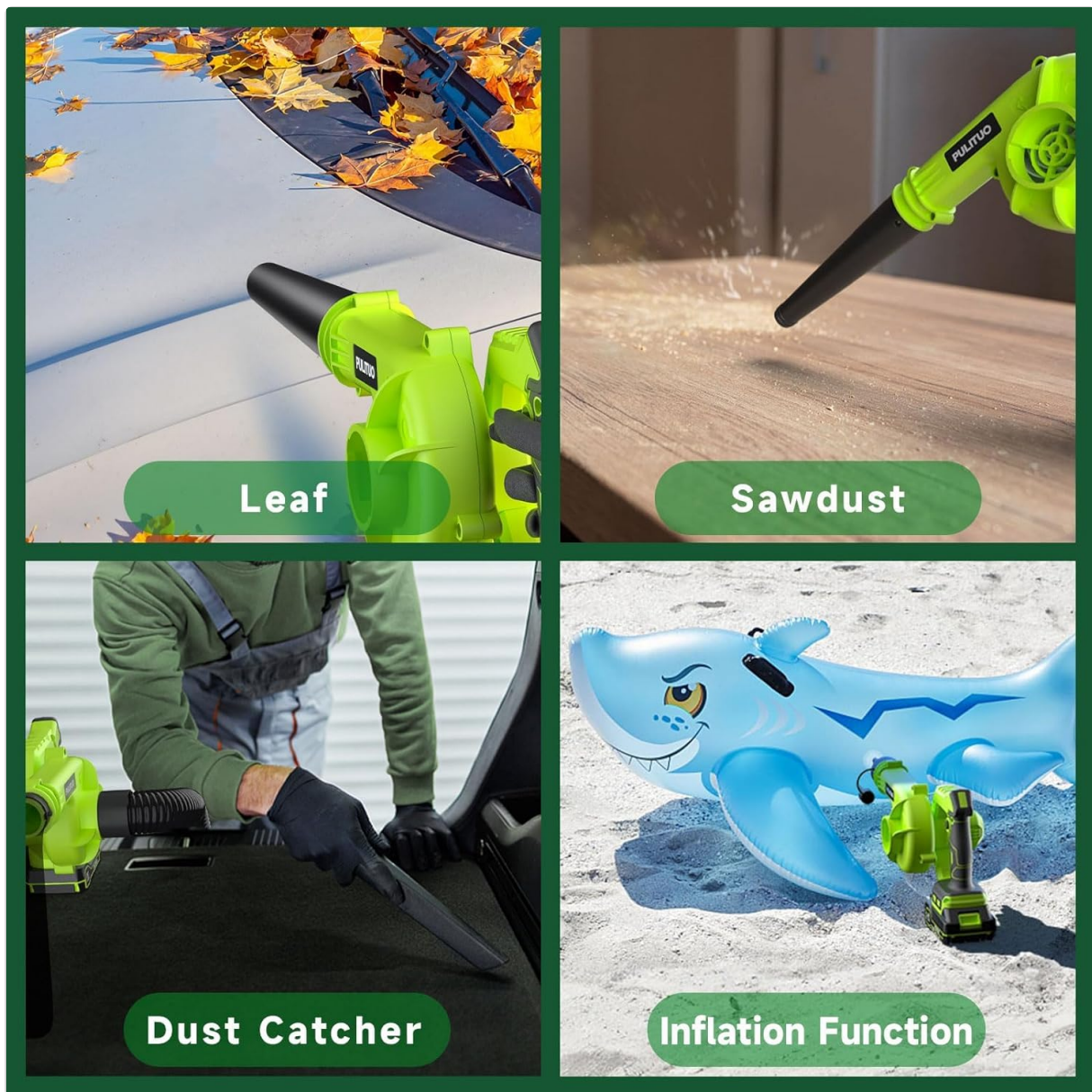


Figure 6.3: Utilizing the tool in vacuum mode for car interior cleaning.

6.4. Inflation Mode Operation

- Ensure the inflation fitting and appropriate nozzle are attached.
- Insert the nozzle into the item to be inflated.
- Turn on the unit and monitor the inflation process to prevent over-inflation.

Video 6.4: Demonstration of the PULITUO 2-in-1 Cordless Leaf Blower's power and features, including its compact design and ease of use. This video highlights the blower's effectiveness in various scenarios.

7. MAINTENANCE

- **Cleaning:** Regularly clean the exterior of the unit with a soft, damp cloth. Remove any debris from the air intake and outlet vents. For vacuum mode, empty and clean the dust collection bag after each use.
- **Battery Care:** Store batteries in a cool, dry place away from direct sunlight. Do not store fully discharged batteries for extended periods. Charge batteries before long-term storage.
- **Storage:** Disassemble the unit and store all components in a dry, secure location. Keep out of reach of children.

8. TROUBLESHOOTING

Problem	Possible Cause	Solution
Unit does not start	Battery not installed correctly or discharged	Ensure battery is fully inserted. Charge battery.
Low airflow/suction	Air intake/outlet blocked; Dust bag full	Clear blockages. Empty dust bag.
Unit stops unexpectedly	Battery discharged; Overheating	Recharge battery. Allow unit to cool down.

9. SPECIFICATIONS

Feature	Detail
Brand	PULITUO
Model	B0CTPL35JM
Power Source	Battery Powered
Voltage	20 Volts
Form Factor	Handheld
Item Weight	1.45 Kilograms (3.19 pounds)
Maximum Speed	17000 RPM
Product Dimensions	34.98"L x 6"W x 9"H

10. WARRANTY & SUPPORT

This PULITUO product comes with a standard manufacturer's warranty. Please refer to the warranty card included in your package for specific terms and conditions. For technical support, replacement parts, or any inquiries, please contact PULITUO customer service through the retailer where the product was purchased.