

Manuals+

[Q & A](#) | [Deep Search](#) | [Upload](#)

manuals.plus /

› [RexingUSA](#) /

› [RexingUSA 4K 3-Channel Dash Cam User Manual](#)

RexingUSA B0CTPCZYR6

RexingUSA 4K 3-Channel Dash Cam User Manual

Model: B0CTPCZYR6

INTRODUCTION

Thank you for choosing the RexingUSA 4K 3-Channel Dash Cam. This advanced device is designed to provide comprehensive surveillance for your vehicle, capturing crystal-clear footage from the front, cabin, and rear perspectives. Equipped with features such as 4K resolution, Wi-Fi connectivity, GPS logging, voice control, G-sensor, loop recording, and an advanced parking monitor, this dash cam ensures your peace of mind on the road and while parked. This manual will guide you through the setup, operation, and maintenance of your new dash cam.

WHAT'S IN THE BOX

Please check the contents of your package to ensure all items are present:

- RexingUSA 4K 3-Channel Dash Cam (Main Unit)
- Rear Camera
- Car Charger
- Car Mount
- 32GB MicroSD Memory Card
- User Manual (this document)



Image: The main dash cam unit, a separate rear camera, and a 32GB MicroSD card, representing the typical contents of the product package.

KEY FEATURES

Ultra HD 4K Clarity

The dash cam records in crystal-clear 3840×2160 resolution at 30 frames per second (fps) for the front camera. This high resolution ensures that every detail on the road, such as license plates and road signs, is captured with exceptional clarity, providing crucial evidence in case of incidents.

REAL **4K** UHD RESOLUTION & SUPER **NIGHT VISION**

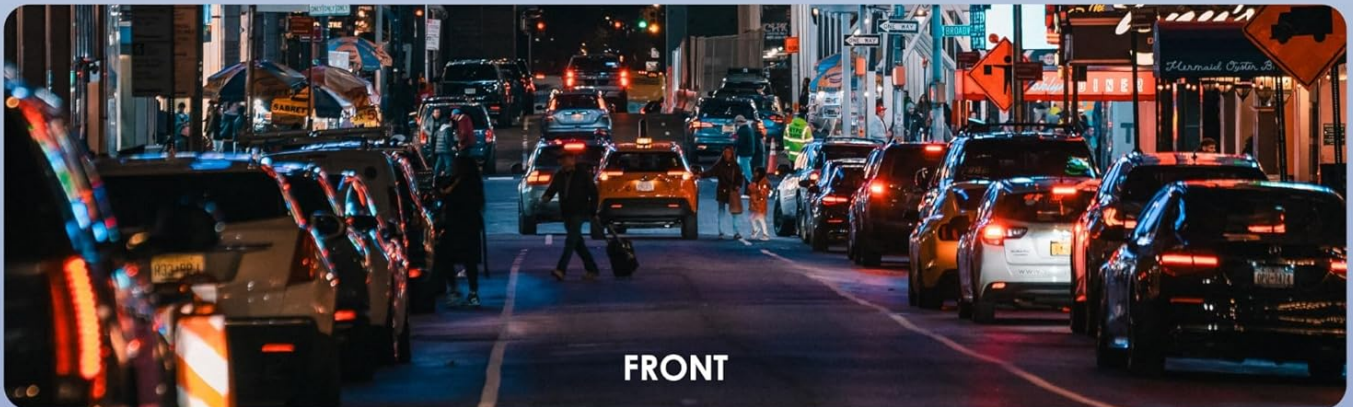
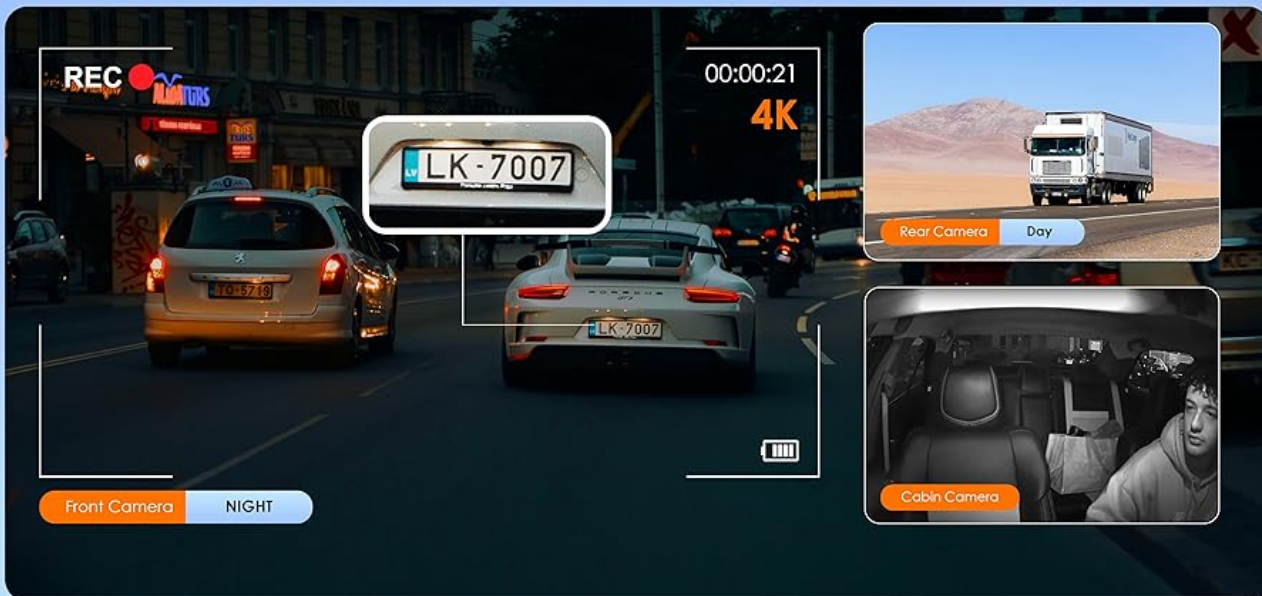


Image: A composite image demonstrating the clarity of 4K UHD resolution and the effectiveness of Super Night Vision, showing views from the front, cabin, and rear cameras in various lighting conditions.



SUPER NIGHT VISION

Enhance key details, like license plates or street signs, captured at night.

Image: An illustration highlighting the Super Night Vision capability, demonstrating how the dash cam enhances key details like license plates and street signs captured during nighttime driving.

3-Channel Coverage

This dash cam simultaneously records video from three perspectives: the front of your vehicle, the cabin interior, and the rear view. This comprehensive coverage provides a complete record of events around and within your vehicle, offering enhanced security and peace of mind.

REXING®

3-CHANNEL

Capture sweeping views with every angle covered

4K
Real 4K

↻
Loop Recording

📍
Internal GPS Logger

🎤
Voice Control

🔋
Super-capacitor

P
Parking Monitor

📶
Wi-Fi Support
2.4 GHz 5 GHz

🚗
Collision Detection



COMPREHENSIVE COVERAGE

Image: A visual representation of the 3-channel dash cam system, illustrating how it captures sweeping views from every angle for comprehensive coverage.

Voice Control Efficiency

Operate your dash cam hands-free using simple voice commands. This feature allows you to perform actions like locking video recordings or taking photos without diverting your attention from the road, enhancing driving safety and convenience.



Image: An illustration demonstrating the voice control feature, showing speech bubbles with commands like "Turn on Wi-Fi", "Go home", and "Lock the video" near the dash cam mounted on a windshield.

G-Sensor & Loop Recording

The built-in G-sensor automatically detects sudden shakes or collisions and locks the current video footage to prevent it from being overwritten. Loop recording ensures continuous operation by overwriting the oldest, unlocked files when the memory card is full, ensuring you always have the most recent recordings.

LOOP RECORDING

Auto-manage file storage to ensure continuous recording.



24/HR PARKING MONITOR

Guard your parked vehicle with a silent witness.

G-SENSOR

Safe store event footage to prevent deletion when a collision is detected.

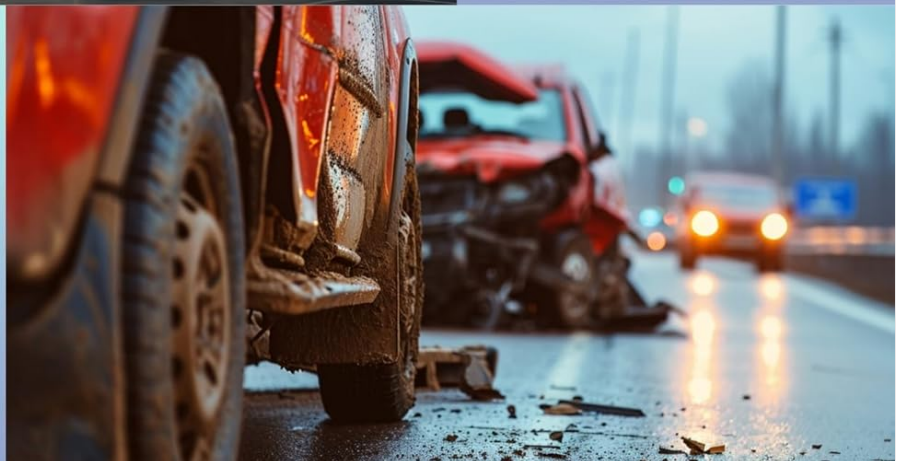


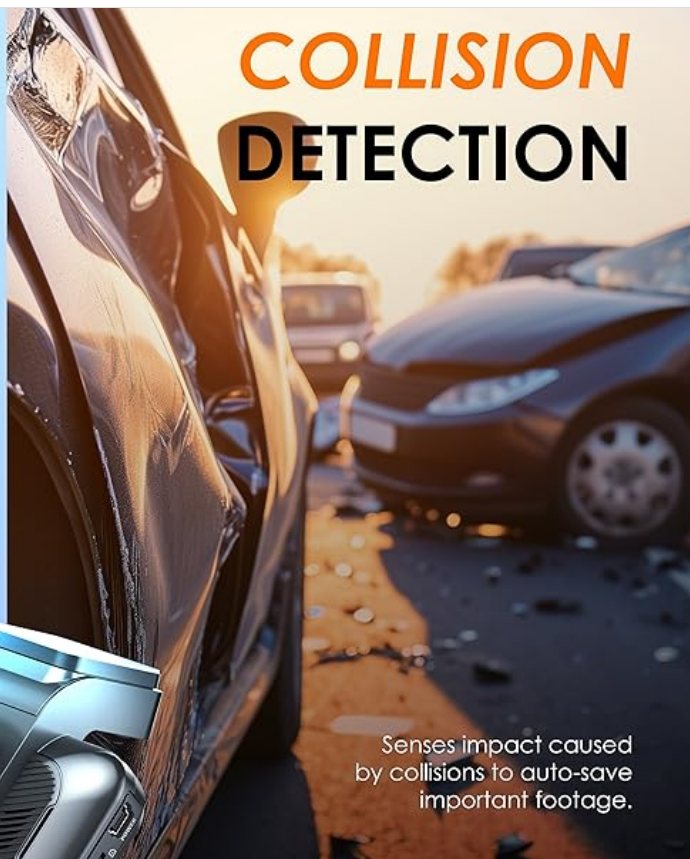
Image: A collage of graphics explaining key features: Loop Recording for continuous file management, 24/HR Parking Monitor for surveillance, and G-Sensor for automatic collision detection and footage saving.

LOOP RECORDING



Overwrites the oldest saved file to free-up space for continuous recording.

COLLISION DETECTION



Senses impact caused by collisions to auto-save important footage.



Image: A split image illustrating Loop Recording, which overwrites old files for continuous recording, and Collision Detection (G-Sensor), which senses impact to auto-save important footage.

Wi-Fi & GPS Integrated

The built-in Wi-Fi allows you to connect the dash cam to your smartphone via a dedicated mobile app. This enables easy management of recordings, live view, and quick sharing. The integrated GPS module accurately tracks your vehicle's speed and location, embedding this data into your video files for detailed journey logs.

Wi-Fi & Connect App

Transfer, share and view other dash cam recordings of Rexing users through our customer Rexing connect application.



BUILT-IN GPS LOGGER

Internal GPS Logger allows you to mark time, date, location and speed information to your recordings.

Image: The dash cam positioned near a laptop displaying a map and Wi-Fi signals, illustrating the Wi-Fi & Connect App for transferring and viewing recordings, and the Built-in GPS Logger for marking time, date, location, and speed information.

BUILT-IN *Wi-Fi & GPS*

Transfer footage to your smartphone FAST with dual-band Wi-Fi. Review your route in detail with google maps integrations for a comprehensive view of your drives.



Image: A scenic road view with a dash cam, smartphone, and laptop overlaid with map interfaces, demonstrating the built-in dual-band Wi-Fi for fast footage transfer and GPS for reviewing routes with Google Maps integration.

Advanced Parking Monitor

When your vehicle is parked, the dash cam provides 24/7 surveillance. It automatically detects disturbances, such as motion around the vehicle or vibrations from impacts, and begins recording, ensuring continuous protection for your car even when you're away.

MOTION DETECTIVE

In 24/7 parking mode, the camera will activate recording when nearby movement is detected.



VIBRATION DETECTIVE

The parking monitor starts to record when the vehicle is hit, scratched, or vandalized.

Image: A visual explanation of the parking monitor's Motion Detection, where the camera records when nearby movement is detected, and Vibration Detection, which activates recording when the vehicle is hit, scratched, or vandalized.

Super Capacitor for Reliability

Unlike traditional batteries, this dash cam utilizes a super capacitor. This component is designed to withstand extreme temperatures, offering superior durability and a longer lifespan, making the dash cam more reliable in various climates and conditions.

SETUP GUIDE

1. Installing the Memory Card

1. Ensure the dash cam is powered off.
2. Locate the microSD card slot on the side of the main unit.
3. Insert the provided 32GB MicroSD card into the slot with the gold contacts facing the back of the camera until it clicks into place.
4. To remove, gently push the card until it clicks out.

2. Mounting the Dash Cam

1. Clean the area on your windshield where you intend to mount the dash cam. Ensure it does not obstruct your view.
2. Attach the car mount to the dash cam.
3. Remove the protective film from the adhesive pad or suction cup of the mount.
4. Firmly press the mount onto the chosen spot on the windshield and secure it.
5. Adjust the angle of the dash cam to ensure it captures the road ahead clearly.

3. Connecting Power

1. Connect the car charger to the dash cam's power input port.
2. Plug the other end of the car charger into your vehicle's 12V power outlet (cigarette lighter socket).
3. Route the power cable neatly along the edge of the windshield and dashboard to avoid obstruction.

4. Installing the Rear Camera

1. Identify a suitable location for the rear camera, typically on the rear windshield, ensuring a clear view.
2. Clean the mounting surface.
3. Attach the rear camera using its adhesive pad.
4. Connect the rear camera cable to the designated port on the main dash cam unit.
5. Route the cable discreetly along the vehicle's interior trim to the front unit.

OPERATING INSTRUCTIONS

Basic Recording

Once powered on, the dash cam will automatically begin recording. The screen will display the live view from the cameras. Recording will continue in a loop, overwriting the oldest unlocked files when the memory card is full.

- **Manual Recording:** Press the Record button (if available) to manually start/stop recording.
- **Emergency Recording (G-Sensor):** In case of a sudden impact or collision, the G-sensor will automatically trigger an

emergency recording, locking the current video segment to prevent it from being overwritten.

Voice Commands

The dash cam supports various voice commands for hands-free operation. Speak clearly and directly towards the dash cam. Common commands include:

- "Turn on Wi-Fi"
- "Lock the video"
- "Take photo"
- "Turn off screen"
- "Start recording"
- "Stop recording"

Using the Mobile App (Wi-Fi Connectivity)

Download the official RexingUSA mobile app from your smartphone's app store. This app allows you to:

- View live footage from the dash cam.
- Browse and download recorded videos to your phone.
- Adjust dash cam settings.
- Share videos directly from your phone.

To connect: Enable Wi-Fi on the dash cam (via voice command or menu), then connect your phone to the dash cam's Wi-Fi network (SSID and password usually displayed on the dash cam screen or in its settings).

GPS Functionality

The built-in GPS module automatically records your vehicle's speed and location data. This information is embedded into the video files and can be viewed using the RexingUSA app or compatible desktop software, providing a detailed record of your journey.

CARE AND MAINTENANCE

- **Cleaning:** Use a soft, dry cloth to clean the dash cam lens and body. Do not use abrasive cleaners or solvents.
- **Memory Card:** Format the microSD card regularly (e.g., once a month) through the dash cam's settings to maintain optimal performance and prevent data corruption. Back up any important files before formatting.
- **Temperature:** While the super capacitor offers excellent temperature resistance, avoid prolonged exposure to extreme heat or cold when the vehicle is parked, if possible.
- **Firmware Updates:** Periodically check the RexingUSA official website for firmware updates. Keeping your dash cam's firmware up-to-date ensures optimal performance and access to new features.

TROUBLESHOOTING

Problem	Possible Solution
Dash cam does not power on.	<p>Check if the car charger is properly connected to both the dash cam and the vehicle's power outlet.</p> <p>Ensure the vehicle's power outlet is functional.</p> <p>Try a different power source or cable if available.</p>

Problem	Possible Solution
Recording stops unexpectedly.	<p>Ensure the microSD card is inserted correctly and is not full.</p> <p>Format the microSD card.</p> <p>Use a high-speed (Class 10 or U3) microSD card from a reputable brand.</p> <p>Check for firmware updates.</p>
Video footage is blurry or unclear.	<p>Clean the camera lens with a soft cloth.</p> <p>Ensure the protective film has been removed from the lens.</p> <p>Check if the dash cam is securely mounted and not vibrating.</p>
Wi-Fi connection issues.	<p>Ensure Wi-Fi is enabled on the dash cam.</p> <p>Restart both the dash cam and your smartphone.</p> <p>Ensure you are within close proximity to the dash cam.</p> <p>Reinstall the mobile app.</p>
GPS not recording location/speed.	<p>Ensure the dash cam has a clear view of the sky (not obstructed by tinted windows or metal).</p> <p>Wait a few minutes for the GPS signal to acquire after powering on.</p>

SPECIFICATIONS

Feature	Detail
Model	B0CTPCZYR6
Video Capture Resolution	Front: 3840x2160p (4K) @ 30fps; Cabin/Rear: 1080p
Channels	3-Channel (Front, Cabin, Rear)
Field of View	170 Degrees (Front)
Storage	Supports MicroSD Card (32GB included)
Power Source	Super Capacitor
Connectivity	Wi-Fi
Special Features	App Control, Built-In GPS, G-Sensor, Loop Recording, Voice Control, Parking Monitor
Control Method	Voice, Buttons, App
Product Dimensions	3.75 x 1.25 x 2 inches
Item Weight	1.59 pounds

WARRANTY AND SUPPORT

RexingUSA products typically come with a standard manufacturer's warranty. Please refer to the warranty card included in your package or visit the official RexingUSA website for detailed warranty terms and conditions.

For technical support, troubleshooting assistance, or any inquiries regarding your dash cam, please contact RexingUSA customer service. Contact information can usually be found on the official website or on the packaging.

RexingUSA Official Website: www.rexingusa.com

