

Manuals.plus /

› Kibiy /

› Kibiy Electric Body Hair Trimmer RFCD-8106 User Manual

Kibiy RFCD-8106

Kibiy Electric Body Hair Trimmer

MODEL: RFCD-8106 USER MANUAL

Introduction

The Kibiy Electric Body Hair Trimmer RFCD-8106 is designed for efficient and comfortable body hair grooming. This manual provides essential information for safe operation, maintenance, and optimal performance of your device. Please read all instructions carefully before first use and retain this manual for future reference.

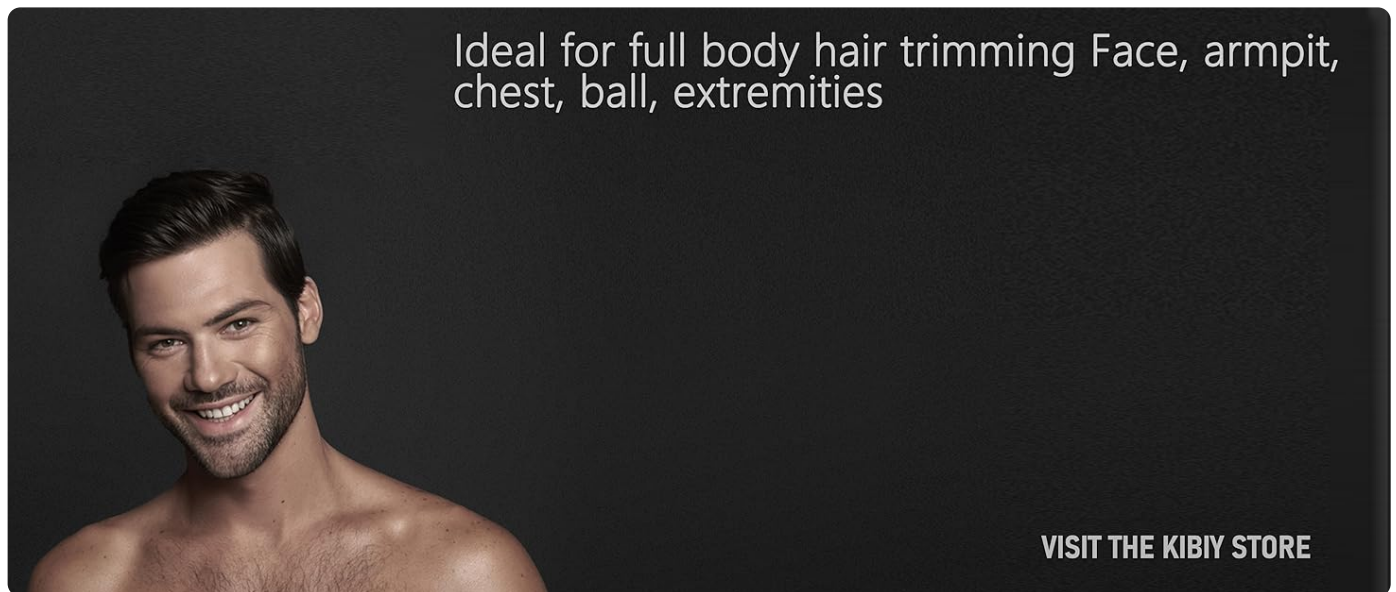


Image: The Kibiy Electric Body Hair Trimmer, highlighting its comfortable and sharp shaving capabilities without cuts or nicks.

Safety Information

To ensure safe operation and prevent injury or damage, please observe the following safety precautions:

- Read all instructions thoroughly before using the device.
- Keep the trimmer out of reach of children.
- Do not attempt to disassemble, modify, or repair the device yourself. Contact customer support for assistance.
- Use only the charging cable provided with the trimmer.

- Ensure the charging port and the device are completely dry before connecting the charging cable.
- Do not immerse the charging stand or power adapter in water or other liquids.
- Avoid using the trimmer on irritated, broken, or infected skin. Consult a doctor if you have any skin conditions.
- If the device shows any signs of damage, such as a cracked casing or damaged blades, discontinue use immediately.
- Do not use the trimmer while charging.

Package Contents

Please check the box to ensure all items are present:

- 1 x Kibiy Electric Body Hair Trimmer
- 1 x Adjustable Guide Comb (3/5/7 mm)
- 1 x Charging Stand Dock
- 1 x Cleaning Brush
- 1 x Type-C USB Charging Cable
- 1 x User Manual
- 1 x Bonus Replaceable Ceramic Blade
- 1 x Blade Lubricating Oil

What's in the box?



1 x Body hair trimmer
1 x Guide comb
1 x Stand dock

1 x Cleaning brush
1 x Charging cable
1 x User manual

1 x Bonus Blade
1 x Blade Oil

Image: All components included in the Kibiy Electric Body Hair Trimmer package.

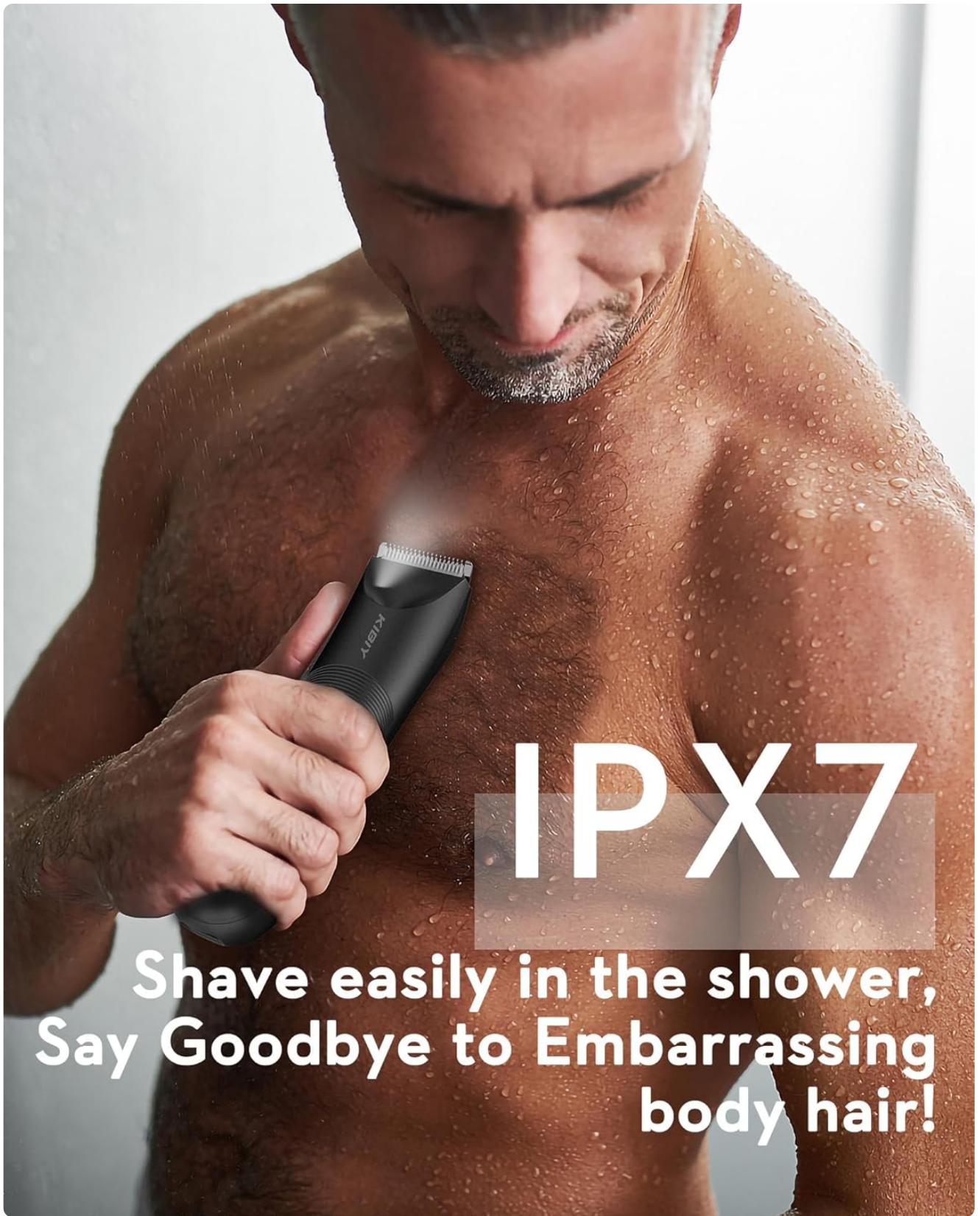
Product Features

- **Advanced Ceramic Blade Technology:** The trimmer features a combination of advanced stainless steel for sharpness and ceramic for safety. The R-angle design helps protect the skin, ensuring a smooth and comfortable trim without pulling or nicks.



Image: Detailed view of the R-angle ceramic blade design for safe trimming.

- **IPX7 Waterproof Design:** This trimmer is fully washable and designed for both wet and dry use. It can be safely used in the shower, making cleaning and grooming convenient.



IPX7

Shave easily in the shower,
Say Goodbye to Embarrassing
body hair!

Image: The trimmer being used in a wet environment, demonstrating its IPX7 waterproof capability.

- **Type-C Fast Charging:** Equipped with a rechargeable lithium-ion battery, the trimmer provides up to 90 minutes of cordless operation after approximately 1.5 hours of charging. It supports Type-C USB charging from various sources like laptops, power banks, or car chargers.

LITHIUM BATTERY

1.5 hours fast charging
Enjoy 90 minutes of trimming time



Image: The trimmer connected to a Type-C charger, illustrating its fast charging and long battery life.

- **Smart LED Display:** The integrated LED display shows the remaining battery percentage and provides a lubrication reminder, ensuring you know when to maintain the blades for optimal performance.



Image: The LED display indicating battery status and maintenance alerts.

- **Ergonomic Design with LED Light:** The trimmer features an ergonomic, non-slip design for a comfortable grip. An integrated LED light illuminates the trimming area, providing better visibility for precise and safe grooming, even in dimly lit conditions.

LED LIGHTING

Better view and trim cleaner with illumination, ensure your have a safe experience.



Image: The trimmer's LED light providing illumination for a clear view during trimming.

- **Powerful 7000 RPM Motor:** The high-efficiency 7000 RPM motor ensures consistent power and smooth trimming, preventing hair from getting pinched or pulled.

FASTER & QUIETER



LONG ENDURANCE

Up to 90 minutes
of cordless run time



7000 RPM MOTOR

High efficiency and
no hair pinching



Image: An illustration of the trimmer's internal motor, emphasizing its power and quiet operation.

Setup

1. **Initial Charge:** Before using your trimmer for the first time, ensure it is fully charged. Connect the Type-C charging cable to the trimmer's charging port and then to a suitable USB power source (e.g., a wall adapter, computer, or power bank). The LED display will show the charging progress. A full charge takes approximately 1.5 hours.
2. **Attaching the Guide Comb:** To attach the adjustable guide comb, align its grooves with the slots on the trimmer head and push it firmly until it clicks securely into place. The comb offers 3mm, 5mm, and 7mm cutting lengths.



Image: The trimmer head with the guide comb, illustrating the three adjustable cutting lengths.

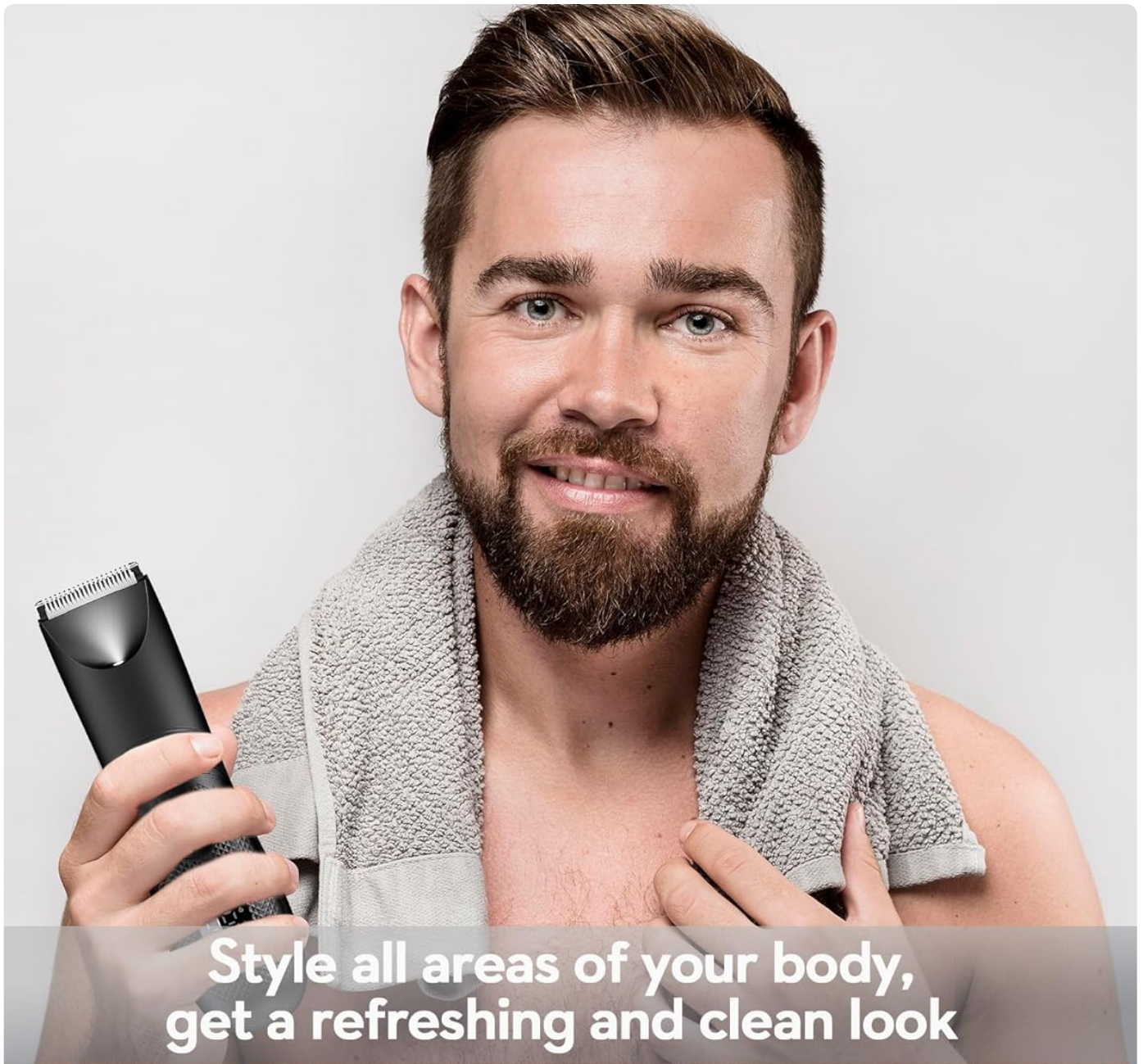
3. **Detaching the Guide Comb:** To remove the guide comb, gently pull it away from the trimmer head.
4. **Blade Installation/Removal:** To remove a blade, push it forward from the back of the trimmer head until it detaches. To install a new blade, align it with the slot on the trimmer head and push it until it clicks securely into place.



Image: The detachable blade mechanism and the included bonus blade.

Operating Instructions

1. **Power On/Off:** Press the power button located on the front of the trimmer to turn the device on or off.
2. **Wet or Dry Use:** The trimmer can be used on dry skin or with water and shaving gel/foam in the shower. For best results, ensure the skin is clean.
3. **Trimming without Guide Comb:** For a closer trim, remove the guide comb. Gently pull the skin taut with one hand and move the trimmer slowly against the direction of hair growth with the other. Exercise extra caution in sensitive areas.
4. **Trimming with Guide Comb:** Attach the desired guide comb (3mm, 5mm, or 7mm). Move the trimmer smoothly and evenly over the hair, ensuring the comb maintains consistent contact with the skin.
5. **Using the LED Light:** The integrated LED light automatically activates when the trimmer is turned on, providing enhanced visibility for precise grooming.
6. **Recommended Body Areas:** The trimmer is suitable for grooming hair on the chest, armpits, legs, and groin area. Always use the guide comb when trimming sensitive areas to minimize the risk of nicks or irritation.



Style all areas of your body,
get a refreshing and clean look

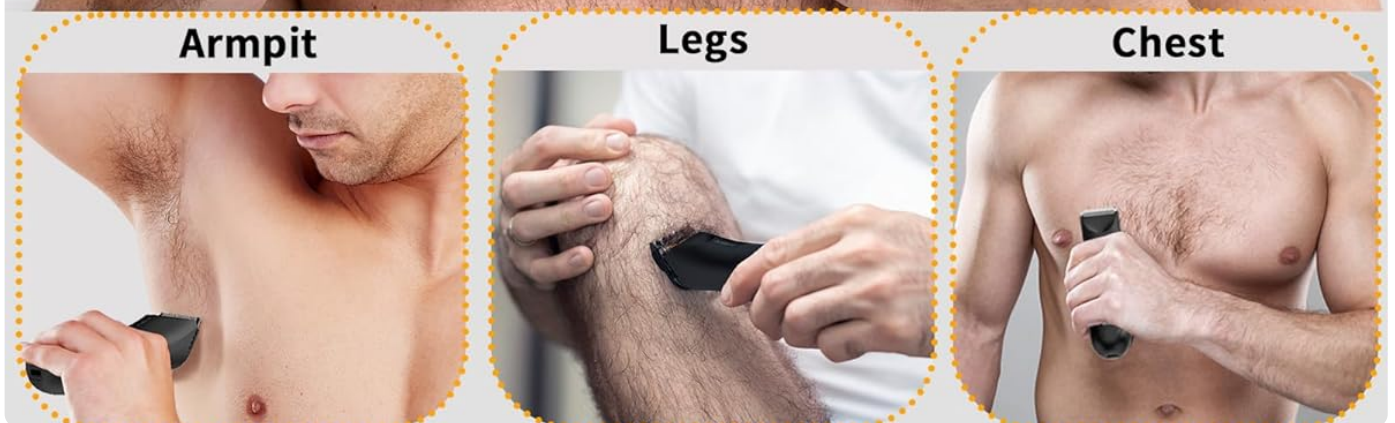


Image: Demonstrating the trimmer's versatility for different body areas.

Maintenance

1. **Cleaning:** After each use, turn off the trimmer. Remove the blade head and rinse it thoroughly under running water to remove any hair and debris. Use the included cleaning brush to dislodge any stubborn hairs from the blade and the trimmer body. Ensure all parts are completely dry before reassembling or storing the device.

2. **Lubrication:** The LED display may indicate when lubrication is required. Apply a small drop of the included blade oil to the blades periodically (e.g., after every few uses) to maintain optimal cutting performance and extend blade life. Turn on the trimmer for a few seconds to allow the oil to distribute evenly.
3. **Blade Replacement:** For continued sharpness and hygiene, replace the blades as needed. A bonus replacement blade is included in the package. Follow the blade installation/removal steps in the Setup section.

Troubleshooting

If you encounter any issues with your Kibiy Electric Body Hair Trimmer, please refer to the following common problems and solutions:

- **Trimmer does not turn on:**

- Check the battery level on the LED display.
- Ensure the device is fully charged.
- Verify that the Type-C charging cable is properly connected to both the trimmer and the power source.

- **Poor trimming performance (pulling hair, uneven cut):**

- Clean the blades thoroughly to remove any accumulated hair or debris.
- Apply blade oil to lubricate the blades.
- If the blades are dull, consider replacing them with a new one.
- Ensure the guide comb is correctly attached and not clogged.

- **Device gets hot during use:**

- Some warmth is normal during prolonged use. Allow the device to cool down if it becomes excessively hot.
- Ensure the blades are clean and well-lubricated to reduce friction, which can contribute to heat buildup.

If the problem persists after trying these solutions, please contact Kibiy customer support for further assistance.

Specifications

Model Name	RFCD-8106
Brand	Kibiy
Power Source	Battery Powered (1 Lithium-ion battery included)
Charging Type	Type-C USB
Charging Time	Approx. 1.5 hours
Battery Life	Up to 90 minutes
Waterproof Rating	IPX7
Blade Material	Ceramic
Motor Speed	7000 RPM
Special Features	Fast Charging, Battery Indicator, LED Light, Waterproof
Recommended Uses	Body, Face, Groin
Package Dimensions	19.9 x 9.9 x 7 cm
Package Weight	419 grams

Warranty and Support

For detailed warranty information, product registration, or technical support, please refer to the documentation included in your original product packaging. You may also visit the official Kibiy website or contact Kibiy customer service directly using the contact details provided with your purchase.