

Manuals.plus /

› NearStream /

› NearStream APS10 Portable Bluetooth Speaker User Manual

NearStream APS10

NearStream APS10 Portable Bluetooth Speaker User Manual

Model: AW-APS10

INTRODUCTION

The NearStream APS10 is a versatile portable Bluetooth speaker designed for high-fidelity audio and clear communication. It features advanced sound technology, multiple connectivity options, and a durable, portable design, making it suitable for various environments from home to outdoor settings.



Image: The NearStream APS10 speaker, highlighting its sleek design and audio features.

WHAT'S IN THE BOX

- APS10 Bluetooth Speaker (x1)
- 1m USB Cable (x1)
- User Manual (x1)
- Quick Start Guide (x1)

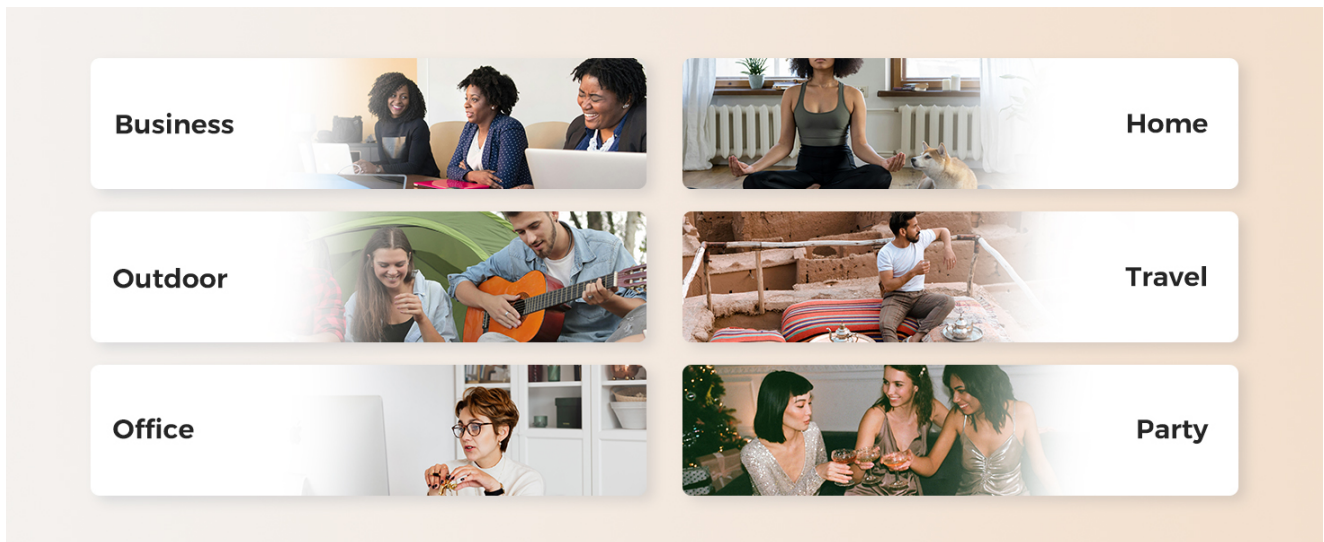


Image: The NearStream APS10 speaker and its included USB-C charging cable.

CONTROLS AND PORTS

Familiarize yourself with the buttons and ports on your APS10 speaker for optimal use.

Top Panel Controls:



Image: Detailed view of the top panel controls on the NearStream APS10 speaker.

- **Power Button:** Press and hold to power on/off.
- **Volume Down (-):** Decrease audio volume.
- **Play/Pause Button:** Play or pause audio playback.
- **Mute/Unmute Button:** Mute or unmute the microphone during calls. Also functions as a voice assistant activator.
- **Volume Up (+):** Increase audio volume.
- **Bluetooth Button:** Press and hold to enter Bluetooth pairing mode.

Side Ports:

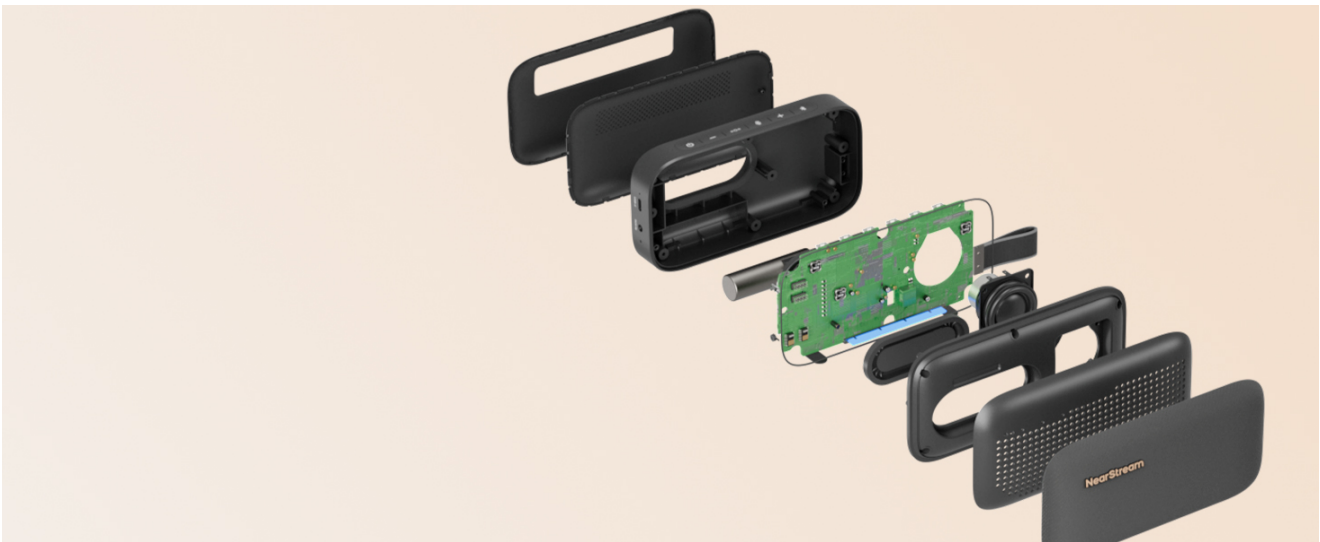


Image: Close-up of the USB-C and AUX IN ports on the side of the speaker.

- **USB-C Port:** For charging the speaker and for wired audio input from compatible devices.
- **AUX IN Port:** For wired audio input using a 3.5mm audio cable (not included).

SETUP

1. Charging the Speaker

Before first use, fully charge your APS10 speaker. Connect the provided USB-C cable to the speaker's USB-C port and the other end to a USB power adapter (not included) or a computer's USB port. The charging indicator light will show charging status. A full charge takes approximately 2 hours and provides up to 15 hours of playtime.

2. Powering On/Off

Press and hold the **Power Button** for 2 seconds to turn the speaker on or off.

3. Bluetooth Pairing

1. Ensure the speaker is powered on.
2. Press and hold the **Bluetooth Button** until the Bluetooth indicator light flashes, indicating pairing mode.
3. On your device (smartphone, tablet, computer), enable Bluetooth and search for "NearStream Bluetooth APS10" in the list of available devices.
4. Select the speaker to connect. Once connected, the Bluetooth indicator light will become solid.

4. Wired Connection (AUX IN or USB-C)

- **AUX IN:** Connect a 3.5mm audio cable (not included) from your audio source's headphone jack to the speaker's AUX IN port. The speaker will automatically switch to AUX mode.
- **USB-C Audio:** Connect the speaker to your computer or compatible device using the USB-C cable. The device should recognize the APS10 as an audio output device.



Image: The NearStream APS10 speaker connected to a PC, illustrating its use as a desktop speaker.

5. Multiple Speaker Pairing (Stereo Mode / Party Mode)

The APS10 supports pairing with other APS10 speakers for an enhanced audio experience.

- **Stereo Mode:** Connect two APS10 speakers to a single device for left and right audio channels. Follow the pairing instructions for each speaker, then initiate TWS pairing (refer to the Quick Start Guide for specific button combinations if available).
- **Party Mode:** Link multiple APS10 speakers for a synchronized, immersive sound experience. This mode allows for broadcasting audio across several speakers simultaneously.



Image: Two NearStream APS10 speakers demonstrating the multi-speaker pairing feature.

OPERATING THE SPEAKER

Music Playback

- **Play/Pause:** Press the **Play/Pause Button** once.
- **Volume Adjustment:** Press the **Volume Up (+)** or **Volume Down (-)** buttons.

Speakerphone Functionality

The APS10 features a built-in microphone with AGC Technology for clear conference calls.

- **Answer/End Call:** Press the **Play/Pause Button** once.
- **Reject Call:** Press and hold the **Play/Pause Button** for 2 seconds.
- **Mute/Unmute Microphone:** Press the **Mute/Unmute Button** once during a call.
- **Voice Assistant:** Press and hold the **Mute/Unmute Button** to activate your device's voice assistant (e.g., Siri, Google Assistant).



Image: The NearStream APS10 functioning as a conference speaker, ideal for online meetings.

Your browser does not support the video tag.

Video: Demonstration of the NearStream APS10 Portable Bluetooth Speaker and its speakerphone capabilities, including a comparison of sound quality between a smartphone and the APS10, and a voice pickup test using the speakerphone.

MAINTENANCE

- **Cleaning:** Use a soft, dry cloth to clean the speaker's exterior. Avoid using abrasive cleaners or solvents.
- **Water Exposure:** The APS10 is *not waterproof*. Avoid exposing it to water, rain, or excessive moisture to prevent damage.
- **Storage:** Store the speaker in a cool, dry place away from direct sunlight and extreme temperatures when not in use for extended periods.

TROUBLESHOOTING

Problem	Possible Cause	Solution
Speaker does not power on.	Low battery or no charge.	Connect the speaker to a power source using the USB-C cable and allow it to charge.
No sound from the speaker.	Volume too low, incorrect input source, or disconnected Bluetooth.	Increase volume on both the speaker and the connected device. Ensure the correct input mode (Bluetooth, AUX, USB) is selected. Re-pair Bluetooth if necessary.
Unable to pair via Bluetooth.	Speaker not in pairing mode, device Bluetooth off, or too far from speaker.	Ensure the speaker's Bluetooth indicator is flashing. Turn your device's Bluetooth off and on. Move the device closer to the speaker (within 20 meters).
Echo during speakerphone calls.	Environmental acoustics or speaker volume too high.	Reduce the speaker's volume. Try moving to a different environment with less reverberation.

SPECIFICATIONS

Brand	NearStream
Model Number	AW-APS10
Speaker Maximum Output Power	10 Watts
Connectivity Technology	Auxiliary, Bluetooth, USB
Audio Output Mode	Stereo
Additional Features	Built-in Microphone, Lightweight, Portable, Stereo Pairing
Battery Average Life	15 Hours
Is Waterproof	FALSE
Control Method	Button
Bluetooth Range	20 Meters
Number of Audio Channels	2.0
Battery Capacity	3200 Milliamp Hours
Item Dimensions (D x W x H)	10"D x 3"W x 5"H

WARRANTY INFORMATION

The NearStream APS10 Portable Bluetooth Speaker comes with a **1-year manufacturer's limited warranty**. This warranty covers defects in materials and workmanship under normal use. Please retain your proof of purchase for warranty claims. For full warranty terms and conditions, refer to the official NearStream website or contact customer support.

SUPPORT

For further assistance, technical support, or to view frequently asked questions, please visit the official NearStream website:

Visit the NearStream Store on Amazon

You may also find helpful information in the included Quick Start Guide.