

[manuals.plus](#) /

› [ApoloSign](#) /

› [ApoloSign Neon Light Digital Picture Frame \(10.1" HD Display, Model DPF102\) User Manual](#)

ApoloSign DPF102

ApoloSign Neon Light Digital Picture Frame (10.1" HD Display, Model DPF102) User Manual

Your guide to setting up and operating your ApoloSign digital photo frame.

1. PRODUCT OVERVIEW

The ApoloSign Neon Light Digital Picture Frame features a 10.1-inch HD display with AI-powered color-changing LED strips, designed to enhance your photo and video viewing experience. It offers seamless sharing through the Frameo app and includes versatile features for daily use.



Figure 1: ApoloSign 10.1" Digital Picture Frame with AI Color LED.

2. PACKAGE CONTENTS

Ensure all items are present in your package:

- ApoloSign Neon Light Digital Picture Frame (Model DPF102)
- Power Adapter
- Detachable Stand
- User Manual (this document)



Figure 2: Unboxing the ApoloSign Digital Picture Frame, showing the frame, power adapter, and stand.

3. SETUP GUIDE

3.1 Initial Power-On and Stand Installation

1. Carefully unpack all components from the box.
2. Attach the detachable stand to the back of the frame. The stand can be adjusted to support the frame in either portrait or landscape orientation.
3. Connect the power adapter to the frame's power port and then plug it into a wall outlet. The frame will automatically power on.



Figure 3: The frame with its stand, ready for use.

3.2 Network Connection and App Setup

4. Follow the on-screen prompts to select your preferred language and connect the frame to your Wi-Fi network.
5. Download the free **Frameo** app on your smartphone or tablet (available on Google Play Store for Android and Apple App Store for iOS).
6. Open the Frameo app and create an account.
7. On your ApoloSign frame, navigate to the 'Add Friend' section to generate a unique code.
8. In the Frameo app on your device, enter the code displayed on your frame to link your device.

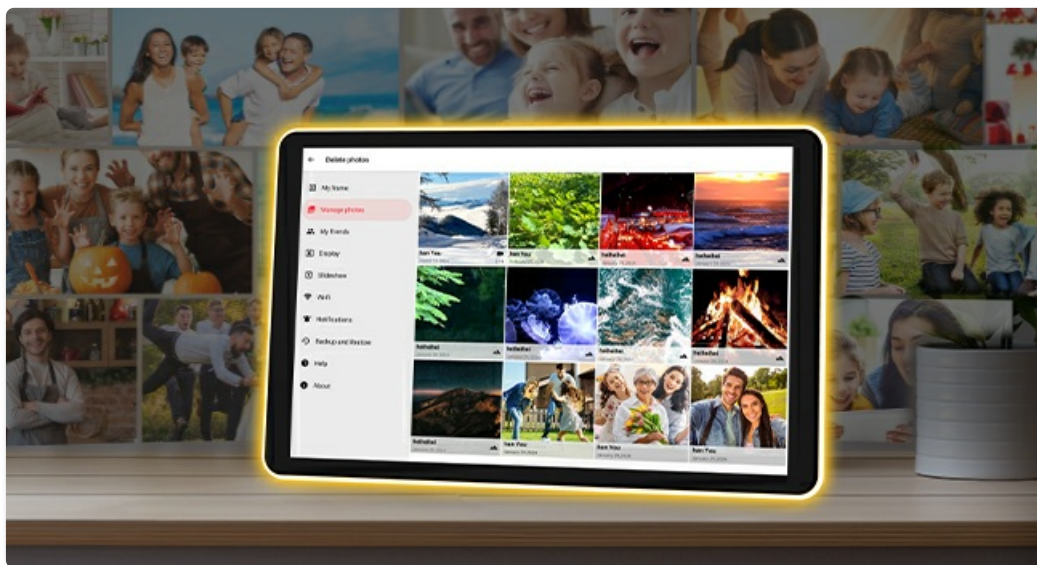


Figure 4: Connecting the frame with the Frameo app for easy photo and video sharing.

3.3 Adding Friends and Family

You can invite other friends and family members to send photos and videos to your frame. Share the unique code from your frame with them, and once they enter it in their Frameo app, they can instantly share memories.

Video 1: A demonstration of setting up the ApoloSign frame and sending photos via the Frameo app.

4. OPERATING YOUR FRAME

4.1 Displaying Photos and Videos

- Photos and videos sent via the Frameo app will automatically appear on your frame.
- You can swipe left or right on the touchscreen to manually navigate through your media.
- The frame supports both landscape and portrait orientations, automatically adjusting the display.

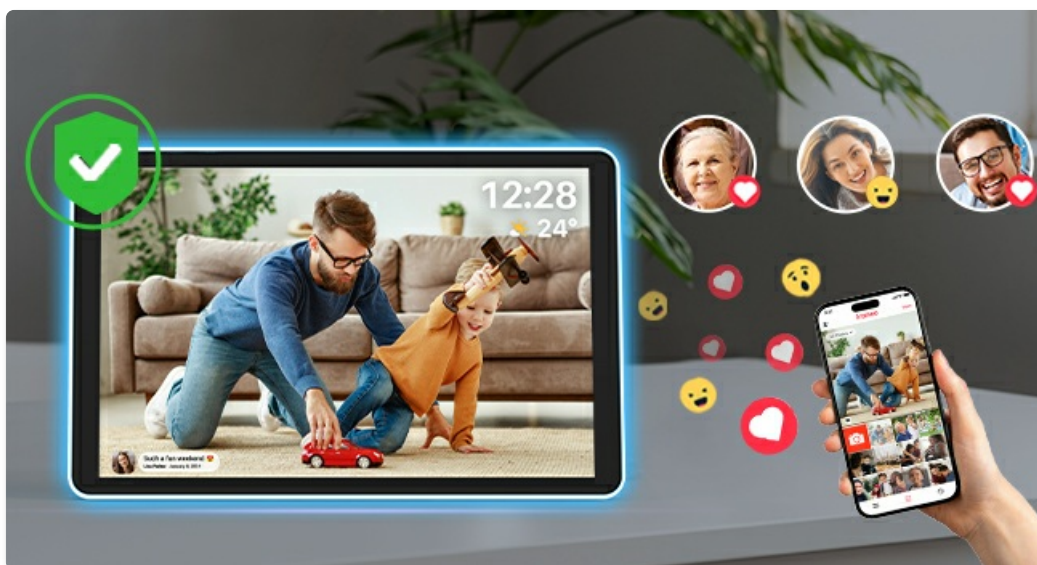


Figure 5: The AI Color LED strip dynamically adjusts to match the photo's color tones.

4.2 Touchscreen Controls

Tap the screen once to reveal the quick menu. From here, you can:

- **React:** Send reactions (like, laugh, surprised, sad) to the sender of the photo.

- **Hide Photo:** Temporarily hide a photo from the slideshow.
- **Gallery:** View all photos stored on the frame.
- **Fit to Frame/Adjust Photo:** Customize how photos are displayed on the screen.
- **Settings:** Access advanced settings for the frame.

Video 2: A review highlighting the smart features and connectivity of the ApoloSign frame.

4.3 AI-Powered Neon Light

The frame's unique AI lighting technology automatically adjusts the ambient LED strip color based on the dominant color tones of the displayed photo. This creates an immersive and dynamic viewing experience.

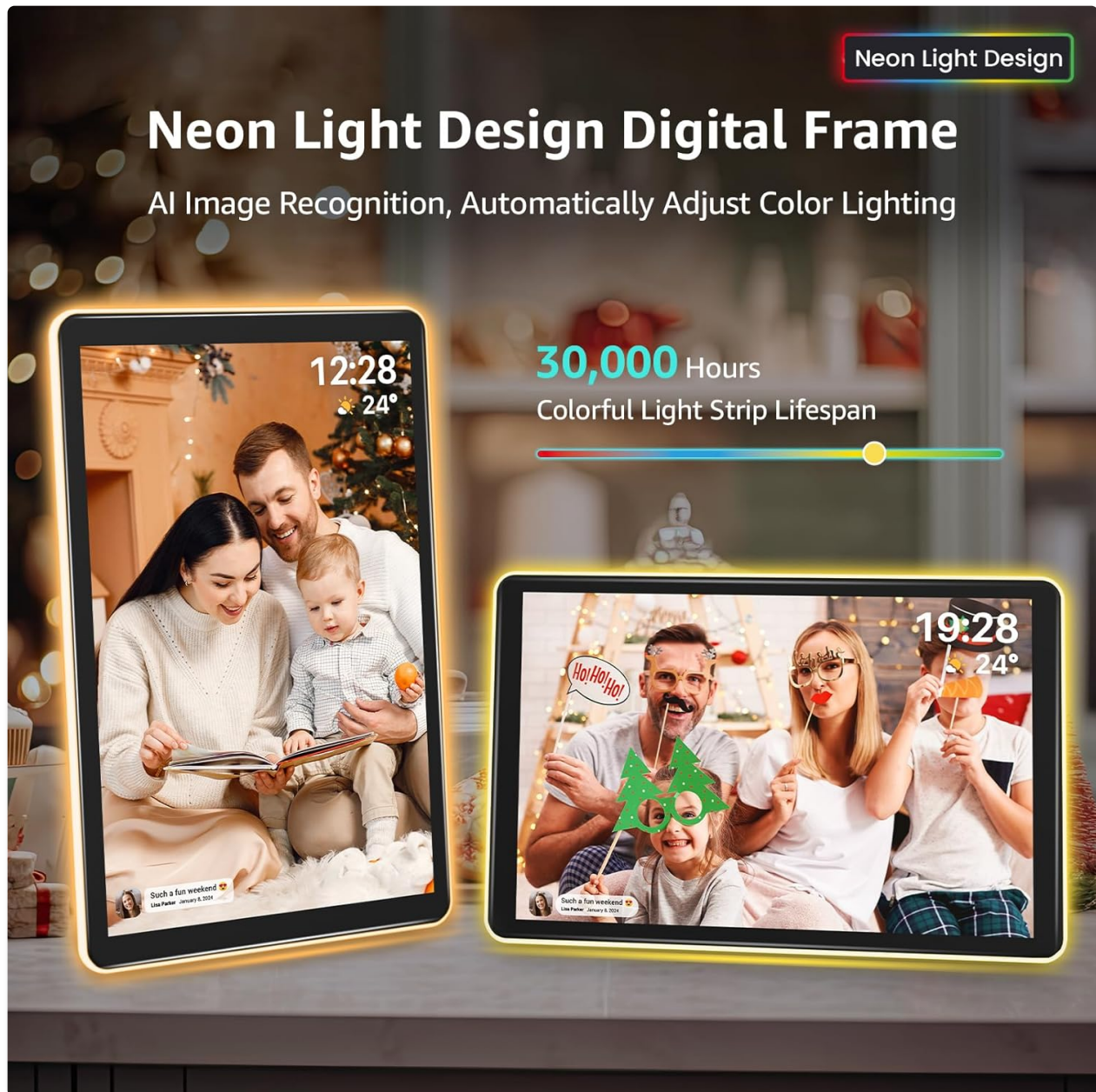


Figure 6: The AI lighting feature in action, adapting to different photo colors.

4.4 Additional Features

- **Alarm Clock:** Set alarms directly from the frame's settings.
- **Weather Updates:** Display current weather information for your location.
- **Do Not Disturb Mode:** Schedule times when the frame will automatically turn off or dim to avoid disruptions.
- **Sleep Mode:** Configure specific times for the frame to go to sleep and wake up, conserving energy.



Figure 7: Overview of convenient and versatile features.

5. MANAGING YOUR MEDIA

5.1 Internal and Expandable Storage

The frame comes with 32GB of internal storage, capable of storing over 8000 photos. You can expand the storage up to 32GB using a TF (Micro SD) card.

Expandable Storage	TF Card (up to 32GB)
Connectivity	Wi-Fi, USB-C, Micro SD
Product Dimensions	9.84 x 14.17 x 0.99 inches
Item Weight	2.6 pounds
Model Number	DPF102

7. TROUBLESHOOTING

7.1 Power Interruption

If the frame loses power unexpectedly (e.g., power surge, accidental unplugging), it may display a warning message upon restart. Always ensure the frame is properly shut down via the settings menu before disconnecting power to prevent potential data loss or system issues.

7.2 Connectivity Issues

- Ensure your Wi-Fi network is active and the signal strength is adequate.
- Restart your Wi-Fi router and the digital frame.
- Verify that the Frameo app on your smartphone is updated to the latest version.

7.3 Photo/Video Display Problems

- Check the file format of your photos/videos. Ensure they are compatible with the frame.
- Verify that the media files are not corrupted.
- Adjust display settings (e.g., 'Fit to Frame') to see if it resolves the issue.







8. WARRANTY AND SUPPORT

8.1 Product Warranty

The ApoloSign Neon Light Digital Picture Frame comes with a 1-year free warranty. Please refer to the warranty card included in your package for detailed terms and conditions. Activate your warranty within 14 days of receiving the product.

8.2 Customer Support

For any technical assistance, troubleshooting, or warranty claims, please contact ApoloSign customer support. Refer to the contact information provided in your product packaging or on the official ApoloSign website.

	<p>Apolesign 10.1" Smart Photo Frame User Guide - Setup, Features, and Support</p> <p>Comprehensive user guide for the Apolesign 10.1-inch Smart Photo Frame. Learn how to set up your device, connect with friends and family, send photos and videos, and find support information. Includes FCC compliance and disposal guidelines.</p>
	<p>Apolesign 15.6 Inch Smart Photo Frame User Guide</p> <p>Comprehensive user guide for the Apolesign 15.6-inch Smart Photo Frame, covering setup, connecting friends, sharing photos and videos, package contents, FCC compliance, and support contact information.</p>
	<p>Apolesign FA1569T Digital Calendar - Product Information</p> <p>Detailed information about the Apolesign FA1569T Digital Calendar, including specifications, manufacturer details, and FCC compliance. Learn about its input power, dimensions, and material.</p>
	<p>Apolesign Smart Screen User Guide: Setup, Features, and Operation</p> <p>A comprehensive guide for the Apolesign Smart Screen, covering setup, specifications, usage instructions, and troubleshooting for models SW2499T, SW249AT, SW3299T, and SW329AT. Learn about its features, connectivity, and operation.</p>
	<p>Apolesign Smart Portable TV UHD 4K Touch Screen Gen 2 User Manual and Guide</p> <p>This user manual provides comprehensive instructions for the Apolesign Smart Portable TV, a 32-inch UHD 4K touch screen device running on Android. It covers setup, product specifications, port connections, button operations, battery usage, screen mirroring, software installation, factory reset, remote control pairing, and FCC compliance.</p>
	<p>Apolesign STANDME Incell Smart Screen User Manual and Guide</p> <p>Comprehensive user manual for the Apolesign STANDME Incell Smart Screen, covering setup, specifications, operation, and troubleshooting. Learn how to install, connect, and use your smart display.</p>