

## ORDRO G700

# Ordro G700 Digital Camera User Manual

Model: G700

## 1. INTRODUCTION

This manual provides essential instructions for the safe and effective operation of your Ordro G700 Digital Camera. Please read this manual thoroughly before using the camera and retain it for future reference. The Ordro G700 is a versatile digital camera featuring a 64MP sensor, 12X optical zoom, 4K video recording, and a 3.0-inch touch screen.

## 2. WHAT'S IN THE BOX

Verify that all items are present in the package:

- Ordro G700 Camera
- Batteries (x2)
- USB Cable
- Lens Cap
- Neck Strap
- User Manual (this document)

## 3. PRODUCT OVERVIEW

Familiarize yourself with the main components of your Ordro G700 camera.



**Figure 3.1:** Front-side view of the Ordoro G700 Digital Camera with the flip-out screen extended and the built-in flash raised. The lens features 12X optical zoom and an aperture range of F2.8-3.1.



**Figure 3.2:** Rear view of the Ordoro G700 Digital Camera, displaying the 3.0-inch IPS touch screen and various control buttons including Menu, OK, EV, and AE/AF Lock.



**Figure 3.3:** Front view of the Ordoro G700 Digital Camera, showcasing the 12X optical zoom lens and the camera's model name.



Figure 3.4: Left side view of the Ordor G700 Digital Camera, indicating the microphone input port.



**Figure 3.5:** Right side view of the Ordoro G700 Digital Camera, indicating the USB port.

## 4. SETUP

---

### 4.1. Battery Installation and Charging

1. Open the battery compartment cover located at the bottom of the camera.
2. Insert the provided Lithium Polymer battery, ensuring the correct orientation as indicated inside the compartment.
3. Close the battery compartment cover securely.
4. To charge, connect the camera to a power source using the supplied USB cable. The charging indicator light will illuminate.

### 4.2. Memory Card Installation

The Ordoro G700 requires an SD card (Flash Memory Type: SD, UHS Speed Class 3 or higher recommended) for storing photos and videos.

1. Locate the SD card slot, typically on the side of the camera.
2. Insert the SD card with the metal contacts facing the correct direction until it clicks into place.
3. To remove, gently push the card until it springs out.

### 4.3. Initial Power On

Press and hold the power button until the screen illuminates. Follow any on-screen prompts for initial setup, such as setting the date and time.

## 5. OPERATING INSTRUCTIONS

---

### 5.1. Basic Photo and Video Capture

To capture photos or videos:

- **Power On:** Turn on the camera.
- **Mode Selection:** Use the mode dial or on-screen menu to select between photo (still) and video (movie) modes.
- **Focus:** The camera supports Auto Focus (AF) and Manual Focus (MF). In AF mode, half-press the shutter button to focus. For MF, adjust the focus ring on the lens.
- **Capture:** Fully press the shutter button to take a photo or start/stop video recording.



# Ordro G700 4K Digital Camera for Photography.



Figure 5.1: Key features of the Ordro G700, including 64MP resolution, Auto/Manual Focus, built-in flash, 12X optical zoom, 3.0-inch flip screen, and webcam functionality.

## 5.2. Zoom Functionality

The G700 features a 12X optical zoom lens and up to 30X digital zoom.

- **Optical Zoom:** Use the zoom lever around the shutter button to adjust the optical zoom. This provides high-quality magnification without loss of detail.
- **Digital Zoom:** Beyond the optical zoom range, the camera can engage digital zoom. Note that digital zoom may reduce image quality.

## 12X OPTICAL ZOOM CAMERA

Plus 30X DIGITAL ZOOM.ZOOM IN and OUT FREELY



Figure 5.2: Demonstration of the 12X optical zoom, showing the ability to magnify distant subjects.

## 5.3. 4K Video Recording

The camera supports 4K video recording at 2160p resolution.

- Switch to video mode.
- Ensure sufficient battery life and memory card space.
- Press the record button to start and stop recording.

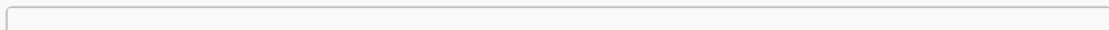


Figure 5.3: Example of 4K video recording quality in a vibrant outdoor environment.

## 5.4. Using the Built-in Flash

The G700 includes a built-in flash for low-light conditions.

- To activate the flash, manually raise it from the camera body.
- Select the desired flash mode (e.g., Auto, Fill-flash, Red-eye reduction) from the camera's menu.

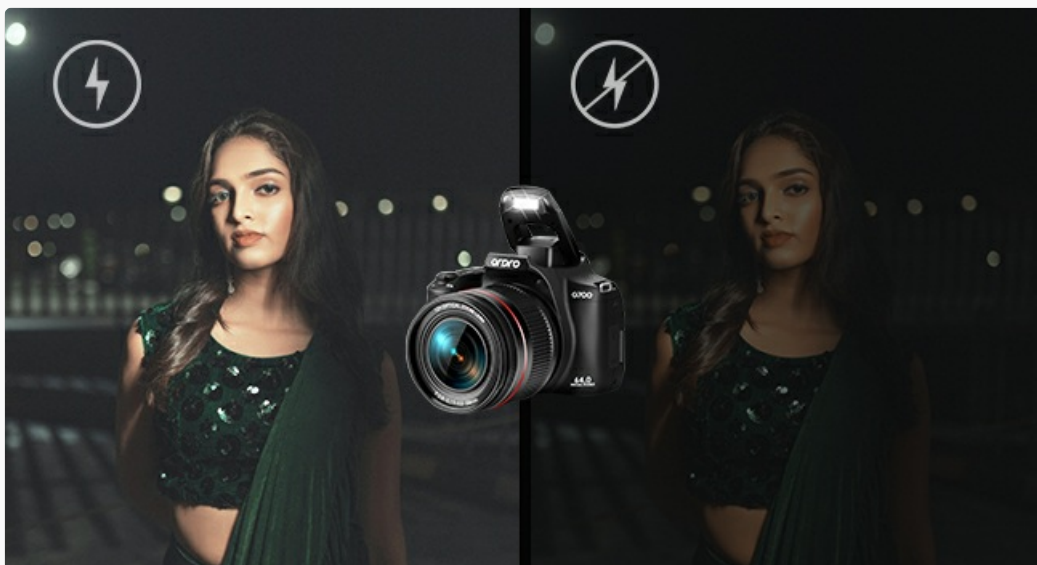


Figure 5.4: Visual comparison of an image taken with and without the built-in flash, highlighting its effect in low light.

## 5.5. Shooting Modes and Filters

The camera offers various shooting modes and creative filters.

- **Shooting Modes:** Access modes like Portrait, Landscape, Automatic, Movie, and Time-lapse through the menu.
- **Filter Modes:** Apply different filters to enhance your photos directly from the camera's settings.



Figure 5.5: Examples of diverse shooting scenarios and modes supported by the G700, such as capturing moving objects or time-lapse sequences.





Figure 5.6: Illustration of various filter effects that can be applied to images for creative expression.

## 5.6. Connectivity Features

- **Wi-Fi Connectivity:** The G700 supports Wi-Fi for wireless transfer of photos and videos to compatible devices. Refer to the camera's menu for Wi-Fi setup instructions.



Figure 5.7: Demonstrating wireless image transfer from the G700 camera to a smartphone via Wi-Fi.

- **Webcam Functionality:** Connect the camera to a computer via USB to use it as a webcam for video conferencing or live streaming.

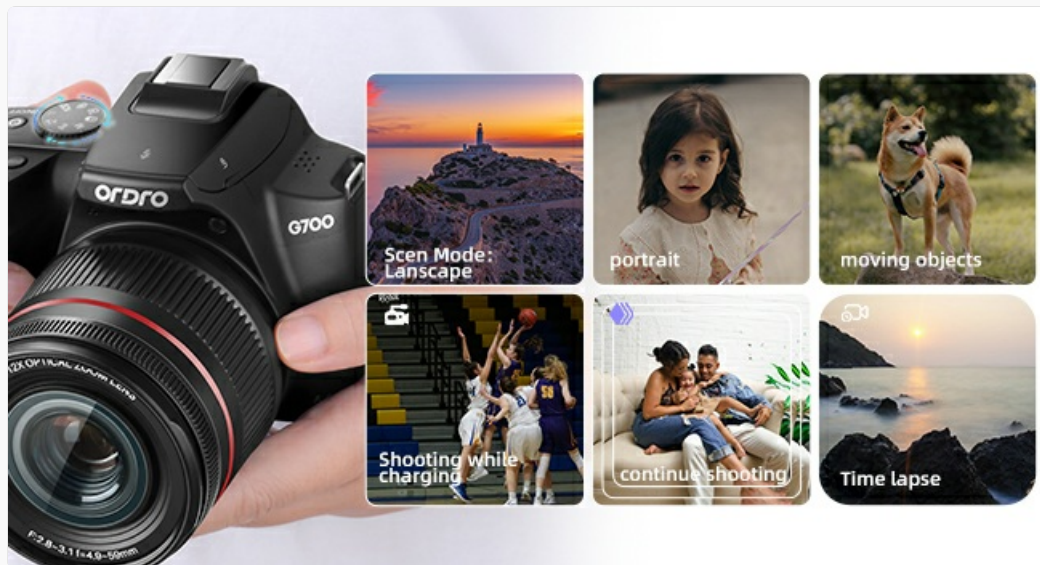


Figure 5.8: The Ordoro G700 camera configured as a webcam for a laptop, enhancing video call quality.

- **HDMI Output:** Connect the camera to an external display (e.g., TV, monitor) using an HDMI cable to view your photos and videos on a larger screen.

## Use Filter Mode to Capture rich and Colorful Moment!



Figure 5.9: The Ordoro G700 camera connected to a television via HDMI, displaying captured media.

## 6. MAINTENANCE

- **Cleaning the Lens:** Use a soft, lint-free cloth specifically designed for camera lenses. Avoid touching the lens surface with your fingers.
- **Cleaning the Screen:** Wipe the touch screen gently with a microfiber cloth. Do not use harsh chemicals.
- **Storage:** When not in use, store the camera in a dry, cool place away from direct sunlight and extreme temperatures. Remove the battery if storing for extended periods.
- **Battery Care:** Charge batteries regularly, even if not in use, to maintain their lifespan. Avoid fully discharging batteries.

## 7. TROUBLESHOOTING

If you encounter issues with your Ordoro G700, refer to the following common solutions:

- **Camera does not power on:** Ensure the battery is correctly installed and fully charged. Try using the second provided battery.
- **SD card not recognized:** Verify the SD card is inserted correctly. Ensure the card is not locked (check the small switch on the side of the SD card). Try formatting the SD card in the camera (this will erase all data).
- **Blurry pictures:** Check that the lens is clean. Ensure the camera is properly focused (allow the autofocus to lock or adjust manual focus). Check lighting conditions and adjust exposure settings if necessary.
- **Video lag or stuttering:** Ensure you are using an SD card with a sufficient write speed (UHS Speed Class 3 or higher is recommended for 4K video).
- **Flash not firing:** Ensure the flash is manually raised. Check flash settings in the camera menu.
- **Wi-Fi connection issues:** Ensure Wi-Fi is enabled on both the camera and the connecting device. Check network settings and password.

If problems persist, contact customer support.

## 8. SPECIFICATIONS

Feature	Specification
---------	---------------

Feature	Specification
Model Name	ORDRO G700
Photo Sensor Technology	CMOS
Effective Still Resolution	8 MP (Interpolated to 64MP)
Video Resolution	4K (2160p)
Optical Zoom	12x
Maximum Focal Length	59mm
Minimum Focal Length	4.9mm
Maximum Aperture	F2.8-F3.1
Image Stabilization	Optical
Screen Size	3.0 inches
Display Type	IPS Touch Screen LCD
Focus Type	Auto Focus and Manual Focus
Connectivity Technology	Wi-Fi, USB
Supported File Format	JPEG (Stills), MP4 (Video)
Battery Type	Lithium Polymer
Item Weight	1 Kilogram
Color	Black

## 9. WARRANTY AND SUPPORT

The Ordro G700 Digital Camera comes with a one-year warranty from the date of purchase. This warranty covers manufacturing defects and malfunctions under normal use. It does not cover damage caused by misuse, accidents, unauthorized repairs, or normal wear and tear.

For warranty claims, technical support, or service inquiries, please contact Ordro US customer service. Refer to the contact information provided with your purchase documentation or visit the official Ordro website.





