

## Manuals+

[Q & A](#) | [Deep Search](#) | [Upload](#)

[manuals.plus](#) /

› [Atopskins](#) /

› [Atopskins 5-in-1 Air Styler Hair Dryer and Multi-Styler Instruction Manual \(Model ATDE-634-Black-02\)](#)

## Atopskins ATDE-634-Black-02

# Atopskins 5-in-1 Air Styler Hair Dryer and Multi-Styler Instruction Manual

Model: ATDE-634-Black-02

## 1. INTRODUCTION

Thank you for choosing the Atopskins 5-in-1 Air Styler. This versatile hair styling tool is designed to meet various styling needs, offering drying, curling, smoothing, and volumizing functions. Please read this manual carefully before use to ensure safe and effective operation.

### What's in the Box

- 1x Main Hair Styler Unit
- 1x Hair Dryer Attachment
- 1x Round Volumizing Brush
- 1x Smoothing Brush
- 2x 30mm Air Curler Attachments



Image 1.1: The Atopskins 5-in-1 Air Styler and its included accessories.

## 2. IMPORTANT SAFETY INFORMATION

To reduce the risk of electric shock, burns, fire, or injury, always follow these basic safety precautions:

- Handle the product with care, avoiding contact with hot parts during and immediately after use.
- When replacing detachable attachments, wear heat-resistant gloves to prevent burns.
- Do not use this appliance near water (e.g., in a bathtub, shower, or near a sink).
- Always unplug the appliance immediately after use.
- Keep the appliance away from children.
- Do not operate the appliance with a damaged cord or plug.
- If the appliance malfunctions, do not attempt to repair it yourself. Contact customer support.
- The hair dryer brush may have a slight odor when used for the first time; this is a normal phenomenon and will dissipate with continued use.
- The brush may become warm with extended use. This is normal, as the product has undergone high-temperature safety testing.

**Warning:** Product packaging may contain information that differs from what is shown online. Always read the label, warnings, and instructions provided with the product before use.

### 3. PRODUCT FEATURES

The Atopskins 5-in-1 Air Styler is engineered with advanced technology for efficient and gentle hair styling:

- **5-in-1 Functionality:** Includes hair dryer, two air curlers, a smoothing brush, and a volumizing brush for diverse styling.
- **High-Speed Brushless Motor:** Features a 110,000 RPM motor with air speed up to 20 m/s for rapid drying and styling.
- **Coanda Technology:** Utilizes powerful airflow to automatically wrap hair around curlers, creating natural, voluminous curls.
- **Negative Ion Technology:** Emits 320 million negative ions to reduce static, enhance smoothness, and add shine.
- **Lightweight Design:** Weighs only 340g, comparable to a mobile phone, for comfortable handling during extended use.
- **Low Noise Operation:** Engineered for quiet performance, with noise levels between 79 dB (lowest speed) and 86 dB (highest speed).
- **Intelligent Temperature Control:** Offers 3 temperature settings (Cold, Warm, Hot) and 3 wind speed settings for customized styling.



#### 5 IN 1 COANDA HOT AIR STYLER

- ▶▶▶ Hot Air Multiplication
- High Speed 110,000RPM Brushless Motor 20m/second
- 320 Million Negative Ions
- Intelligent Auto Heat Adjustment
- Unique Lightweight Ergonomic Design
- 1 Click Easy Reverse Cleaning- Reverse Power 1300W

Image 3.1: Key features of the Atopskins 5-in-1 Air Styler.

**Traditional Hair Dryer**

Damaged Dry Frizzy

**320 Millions Negative ions Hair Care Dryer**

320 Millions negative ions Aroma Nourishing Shine and fragrant

Image 3.2: Benefits of negative ion technology for hair health.

## 4. SETUP

### Attaching and Detaching Accessories

The Atopskins 5-in-1 Air Styler features interchangeable attachments for various styling needs. Follow these steps to securely attach and detach them:

1. **Installation:** Align the "triangle" mark on the attachment with the "lock" symbol on the main unit. Insert the attachment and rotate the gold ring until the "triangle" aligns with the "lock" symbol to secure it.
2. **Disassembly:** Rotate the gold ring until the "triangle" aligns with the "unlock" symbol. Then, pull the brush head upward to remove it.

### How To Change The Tool Accessories

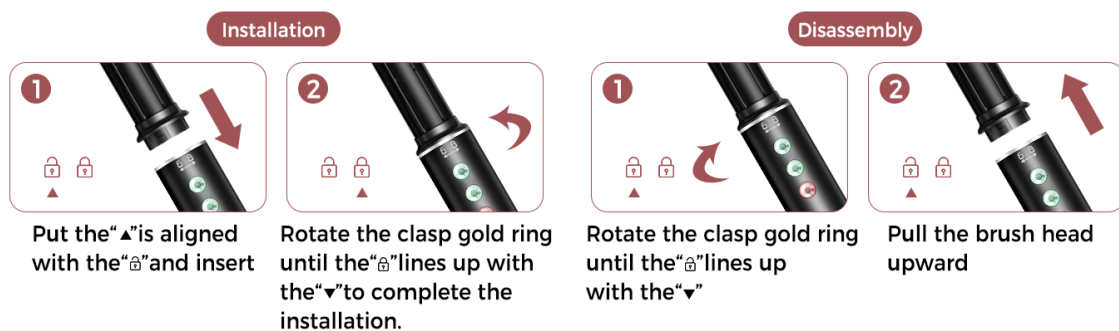


Image 4.1: Guide for changing the styler attachments.

## 5. OPERATING INSTRUCTIONS

### Controls Overview

The main unit features intuitive controls for power, temperature, and wind speed:

- **Power Button:** Press to turn the styler ON/OFF.
- **Cold/Hot Wind Switch Button:** Toggles between cold, warm (110°C/230°F), and hot (120°C/248°F) air settings.
- **Middle/High Speed Button:** Adjusts wind speed settings.

### Intelligent Memory

#### 3 Temperature & 3 Wind

- Cold (Care 90°C/194°F)
- Warm (110°C/230°F)
- Hot (120°C/248°F)

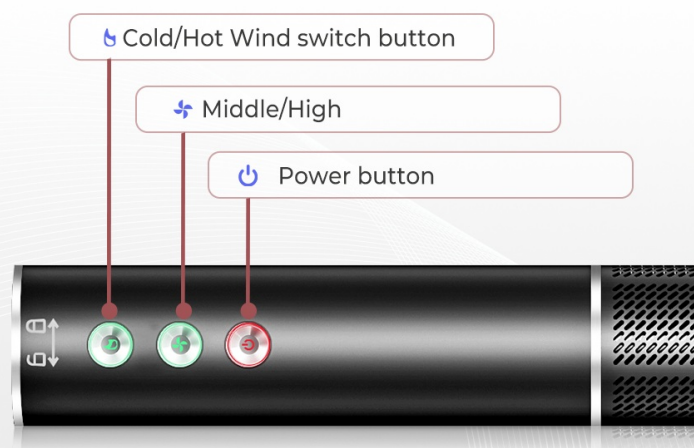


Image 5.1: Overview of the styler's intelligent controls.

## General Usage

Plug the styler into a suitable power outlet. Select the desired attachment, then power on the device and choose your preferred temperature and wind speed settings. Always ensure your hair is towel-dried before styling for best results.

## Using the Hair Dryer Attachment

Attach the hair dryer nozzle. Use the high-speed setting to quickly dry your hair. The powerful airflow can dry hair up to 60% faster, typically within 10 minutes for most hair types.

### Ultra-Fast Drying

The powerful airflow releases thousands of negative ions to surround and nourish your hair comfortably saving 60% drying time while maintaining shine and volume.



 <b>1-2 Mins</b> for short hair	 <b>2-3 Mins</b> medium hair	 <b>3-5 Mins</b> for long hair
--	---	---


Image 5.2: Ultra-fast drying capability of the styler.

## Using the Automatic Air Curler

Select the appropriate 30mm air curler attachment (left or right). Hold a section of hair near the curler. The Coanda effect will automatically wrap the hair around the barrel, creating voluminous curls without extreme heat. Hold for a few seconds, then release.

### Experience Novel Auto-Wrap Curl with No Learning Curve

Using Coanda technology, powerful continuous airflow ensures that the hair auto wrap to the curler surface, faster creating voluminous and smooth natural curls without extreme heating.






 <b>1</b>	 <b>2</b>	 <b>3</b>
---	---	---

Image 5.3: How to achieve auto-wrap curls with the air curler.

## Using the Smoothing Brush

Attach the smoothing brush. Use it to gently brush through your hair, creating a smooth, straight finish. The brush helps reduce frizz and adds shine without excessive heat.

## MASSAGE STRAIGHTENER BRUSH

Creates naturally straight hair and reduces frizz when styling. Hard pillow teeth are designed to smooth frizzy hair.

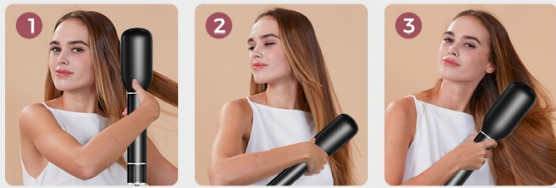


Image 5.4: Using the massage straightener brush for smooth hair.

### Using the Volumizing Brush

Attach the round volumizing brush. Use it to lift hair at the roots and create volume, or to shape the ends. The brush is designed to prevent extreme heat damage while styling.

## No Extreme Heat Damage

The hair dryer brush effectively smoothes the static frizz, locking shine and volume without heat damage.

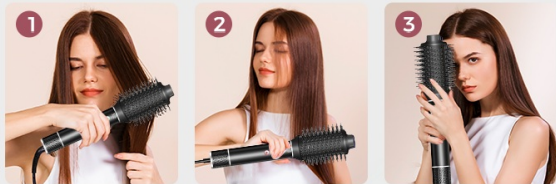


Image 5.5: Styling with the brush attachment to prevent heat damage.

### Styling Tips

- Towel dry your hair before using the styler.
- Apply your favorite hair care product.
- Dry your wet hair with the hair dryer attachment until it is 80-90% dry.
- For long-lasting curls, use the auto-wrap curlers or hot air brush accessories. After curling, set with a cold shot for 5-10 seconds, then slowly release the curl.
- We recommend using mousse or styling spray to help your hairstyle last longer.

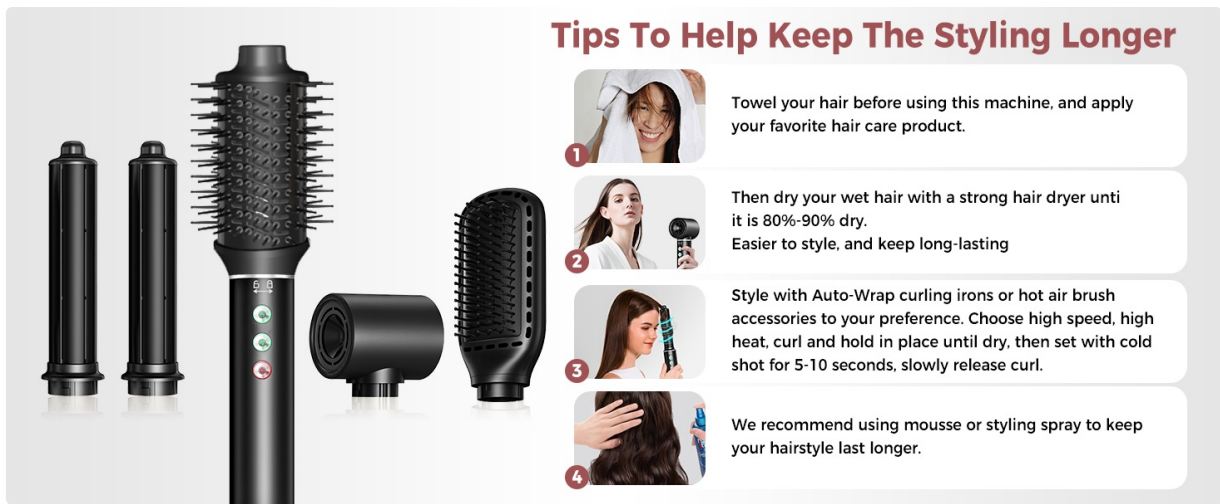


Image 5.6: Tips for achieving and maintaining your desired hairstyle.

## 6. MAINTENANCE

### Cleaning

Regular cleaning ensures optimal performance and longevity of your Atopskins 5-in-1 Air Styler.

- **Self-cleaning Function:** When the hair dryer is off, long-press the wind speed button for 3 seconds to activate the auto-cleaning function. This will run for 8 seconds and then automatically turn off.
- Ensure the appliance is unplugged and completely cool before cleaning any attachments manually.
- Wipe the main unit and attachments with a soft, damp cloth. Do not use abrasive cleaners or immerse the unit in water.
- Remove any hair or debris from the brushes and air inlets/outlets regularly.

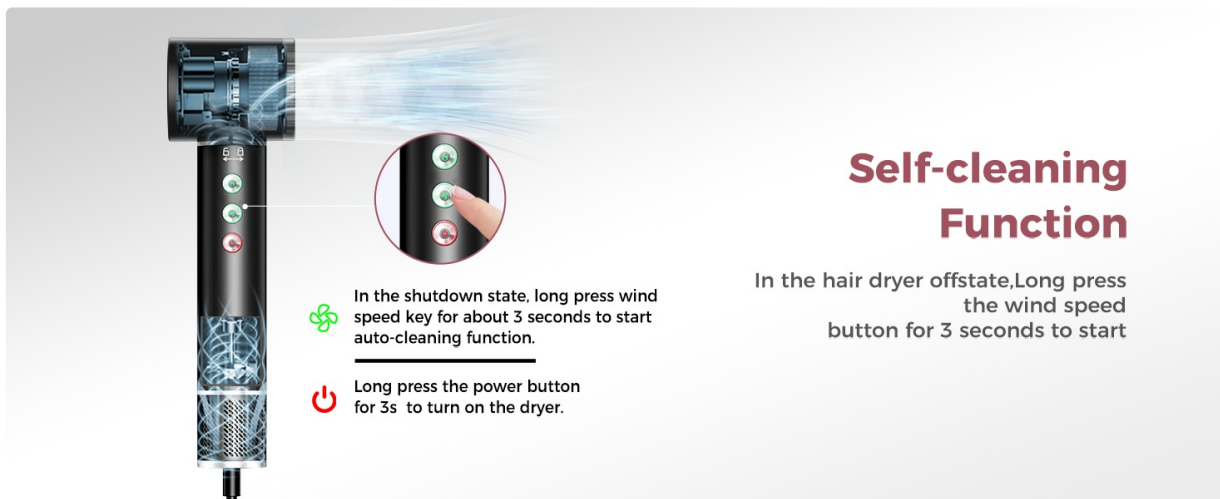


Image 6.1: Activating the self-cleaning function.

## 7. TROUBLESHOOTING

If you encounter any issues with your Atopskins 5-in-1 Air Styler, please refer to the following common problems and solutions:

Problem	Possible Cause	Solution
---------	----------------	----------

Problem	Possible Cause	Solution
Styler does not turn on.	Not plugged in; power outlet issue; damaged cord.	Ensure the styler is securely plugged into a working outlet. Check the power cord for damage.
Attachments are difficult to change.	Incorrect rotation; debris in connection.	Ensure the gold ring is rotated to the "unlock" position. Check for any obstructions.
Brush attachment becomes very hot.	Normal operation with extended use.	This is normal. Use heat-resistant gloves when changing attachments if needed.
Slight odor during first use.	Normal for new appliances.	The odor will dissipate after a few uses.
Hair does not curl effectively.	Hair too wet/dry; incorrect technique; insufficient hold time.	Ensure hair is 80-90% dry. Hold hair near the curler for sufficient time. Use styling products.

## 8. SPECIFICATIONS

Feature	Detail
Brand	Atopskins
Model Number	ATDE-634-Black-02
Product Dimensions	13 x 22 x 7 cm
Item Weight	1.74 kg (Total package weight)
Main Unit Weight	Approx. 340g
Color	Black
Material	Metal
Wattage	1000W (Input power)
Motor Speed	110,000 RPM
Air Speed	Up to 20 m/s
Negative Ions	320 Million
Noise Level	79 dB (low speed) - 86 dB (high speed)
Power Source	Corded Electric
Country of Origin	China

## 9. WARRANTY AND SUPPORT

For warranty information or technical support, please refer to the documentation included with your product or contact Atopskins customer service. Keep your purchase receipt as proof of purchase.