



Manuals.plus /

- › HOME VISION /
- › HOME VISION Heavy Duty Tilt TV Wall Mount Bracket User Manual

HOME VISION 9801

HOME VISION Heavy Duty Tilt TV Wall Mount Bracket User Manual

Model: 9801

INTRODUCTION

Thank you for choosing the HOME VISION Heavy Duty Tilt TV Wall Mount Bracket. This manual provides detailed instructions for the safe and proper installation, operation, and maintenance of your new TV wall mount. Designed for flat and curved TVs ranging from 48 to 120 inches, this robust mount offers a secure and adjustable viewing solution for your home or office.

Please read this manual thoroughly before installation to ensure correct setup and to maximize the lifespan of your product. Keep this manual for future reference.



Image: The HOME VISION Heavy Duty Tilt TV Wall Mount Bracket, showing the main components including the wall plate, TV brackets, and accessory bag.

KEY FEATURES

- **Robust Compatibility and Weight Capacity:** Supports VESA standards up to 800x600mm and a maximum weight capacity of 200 pounds, suitable for TVs 48" to 120" and larger.
- **Easy to Adjust for Comfortable Viewing:** Offers a wide tilt range of 10 degrees down and 5 degrees up, easily controlled with a single knob for effortless angle adjustment.
- **User-Friendly Design with Thoughtful Details:** Features a smooth-sliding wall plate for easy TV centering, an anti-fall side design, horizontal fine-tuning ($\pm 1^\circ$ adjustable), and a pull cord for quick TV installation/removal.
- **Utilizes Wall Space and Compatible with Outlets:** Low profile design with 2.56 inches minimum distance from the wall, allowing installation over electrical outlets. Tilting up 5° provides easier access to HDMI/USB ports.



Image: Visual comparison demonstrating the superior 200+ lbs load capacity of the HOME VISION mount compared to other mounts.

Tilt for Anti-Glare



Image: Diagram showing the tilt range of the TV mount (+5° to -10°) and a user adjusting the tilt with a knob for anti-glare viewing.

Considerate Details

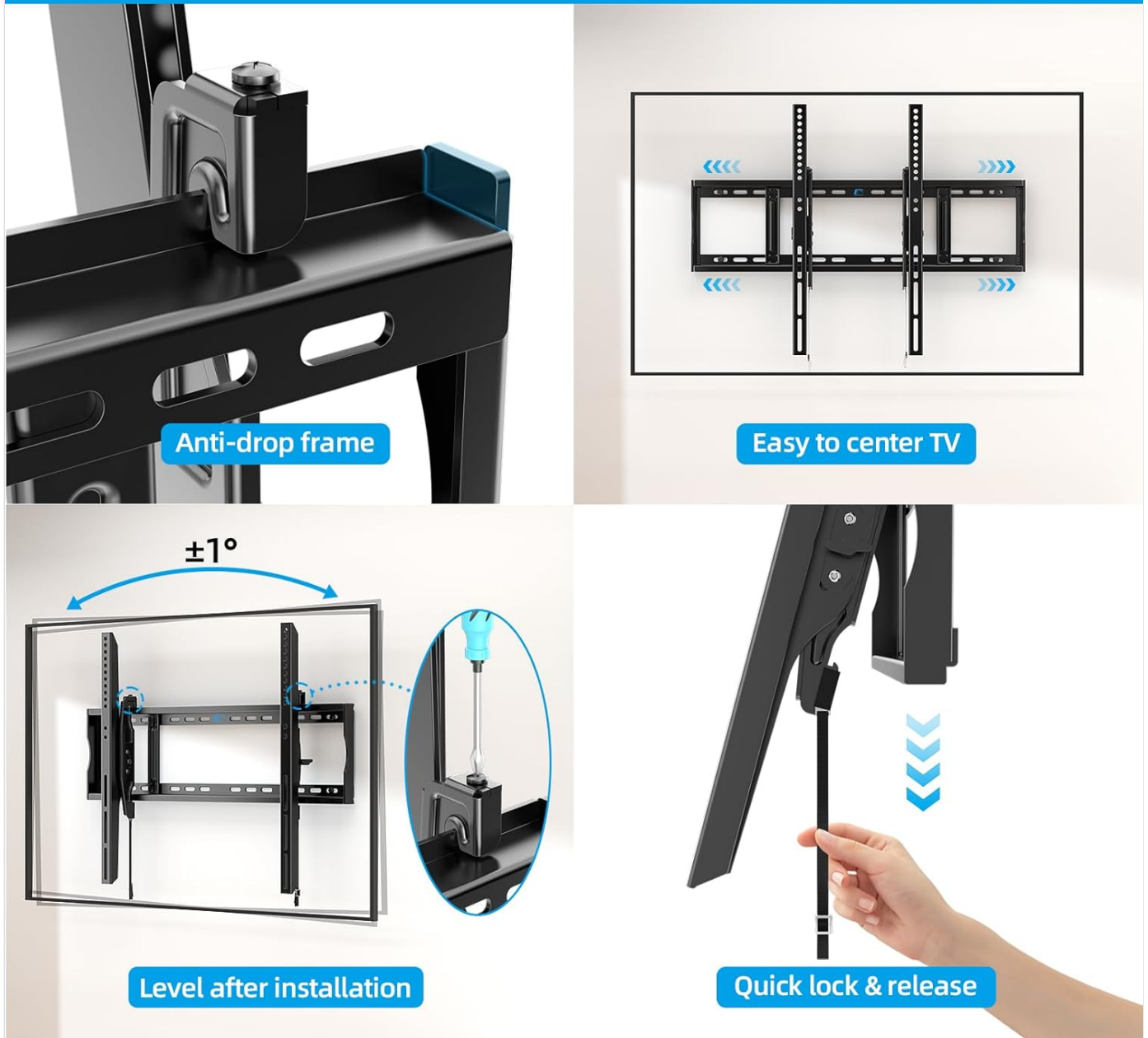


Image: Detailed views of the mount's features, including the anti-drop frame, mechanism for easy TV centering, horizontal fine-tuning, and the quick lock & release pull cord.

SETUP INSTRUCTIONS

Before You Begin

- **Verify Package Contents:** Ensure all parts listed in the packaging are present.
- **Tools Required (not included):** Pencil, stud finder, drill, level, Phillips head screwdriver, socket wrench.
- **Safety First:** Always ensure the wall structure can support the combined weight of the mount and your TV. If unsure, consult a professional.
- **Check TV Compatibility:** Confirm your TV's VESA pattern (distance between mounting holes on the back of your TV) and weight are within the mount's specifications (Max VESA 800x600mm, Max Load 200LBS).

Step-by-Step Installation

Step 1: Mount Brackets to the TV

Carefully place your TV face down on a soft, clean surface. Attach the two vertical TV brackets to the back of your TV using the appropriate screws and spacers provided. Ensure the brackets are centered and securely fastened.

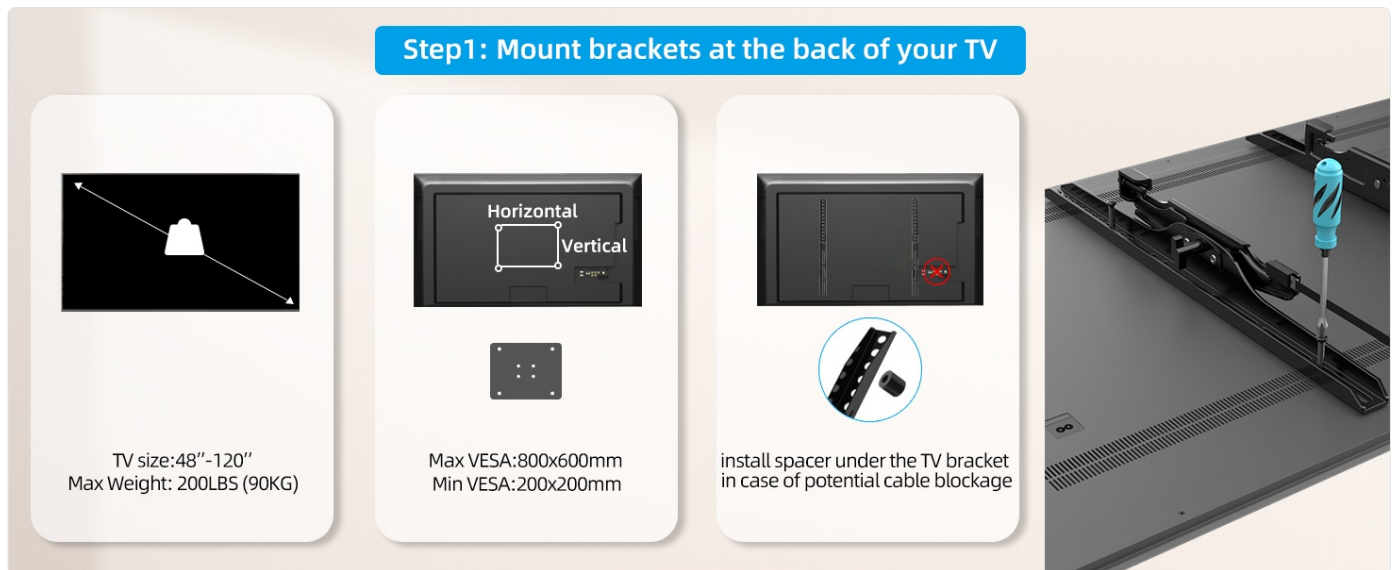
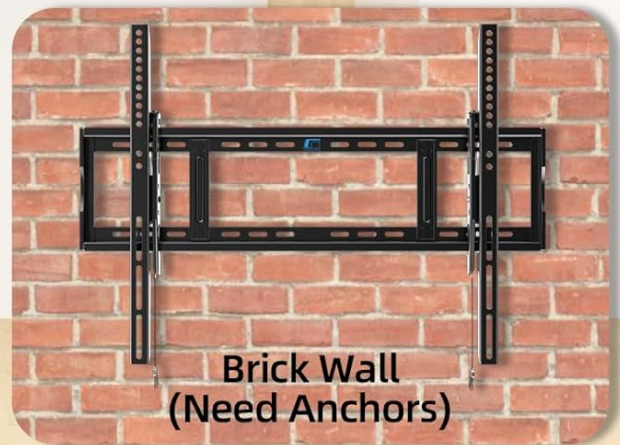
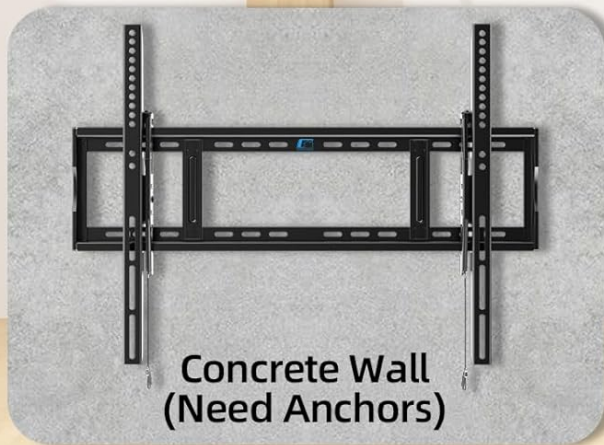


Image: Illustration showing how to attach the mounting brackets to the back of the TV, including VESA compatibility and spacer usage.

Step 2: Install the Wall Plate

Locate and mark the desired mounting position on your wall. Use a stud finder to identify wood studs for secure attachment. For concrete or brick walls, appropriate anchors (not included) will be required. Drill pilot holes and securely fasten the wall plate to the wall using the provided lag bolts. Use a level to ensure the wall plate is perfectly horizontal.

Applicable Wall Types



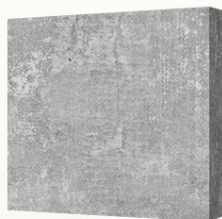
Do not install on the drywall only.

Image: Diagrams illustrating installation on 16"/18"/24"/28" wood studs, concrete walls (requiring anchors), and brick walls (requiring anchors). Note: Do not install on drywall only.

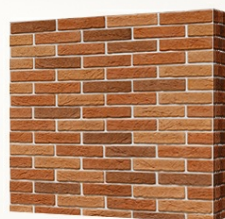
Step2: Install the wall plate



16"/18"/24"/28"
Wood Studs



Concrete



Brick Wall



Image: Illustration demonstrating the process of installing the wall plate onto the wall, showing different wall types.

Step 3: Hang the TV

With assistance, carefully lift the TV and hook the TV brackets onto the wall plate. Ensure the brackets are properly seated on the wall plate's rails. The anti-drop edges will help prevent accidental slipping. Once the TV is in place, pull the quick lock and release cords to secure the TV to the mount, preventing it from being accidentally dislodged.



Image: Illustration showing how to hang the TV onto the installed wall plate, highlighting anti-drop edges and strong locks for security.

OPERATION

Adjusting the Tilt Angle

The HOME VISION TV mount allows for easy tilt adjustment to achieve optimal viewing angles and reduce glare. To adjust the tilt, simply loosen the knob located on the side of each TV bracket. Tilt the TV to your desired angle (from +5° up to -10° down), then tighten the knobs to secure the TV in position. No tools are required for this adjustment.



Image: Visual guide demonstrating how to easily adjust the TV's tilt angle using the integrated knob on the mount.

Horizontal Fine-Tuning

After installation, you can fine-tune the horizontal position of your TV by $\pm 1^\circ$ to ensure it is perfectly level. This adjustment can be made even after the TV is mounted.

Accessing Ports

The low-profile design and upward tilt capability (5°) make it easier to access HDMI/USB ports located on the side or bottom of your TV, even when mounted close to the wall.

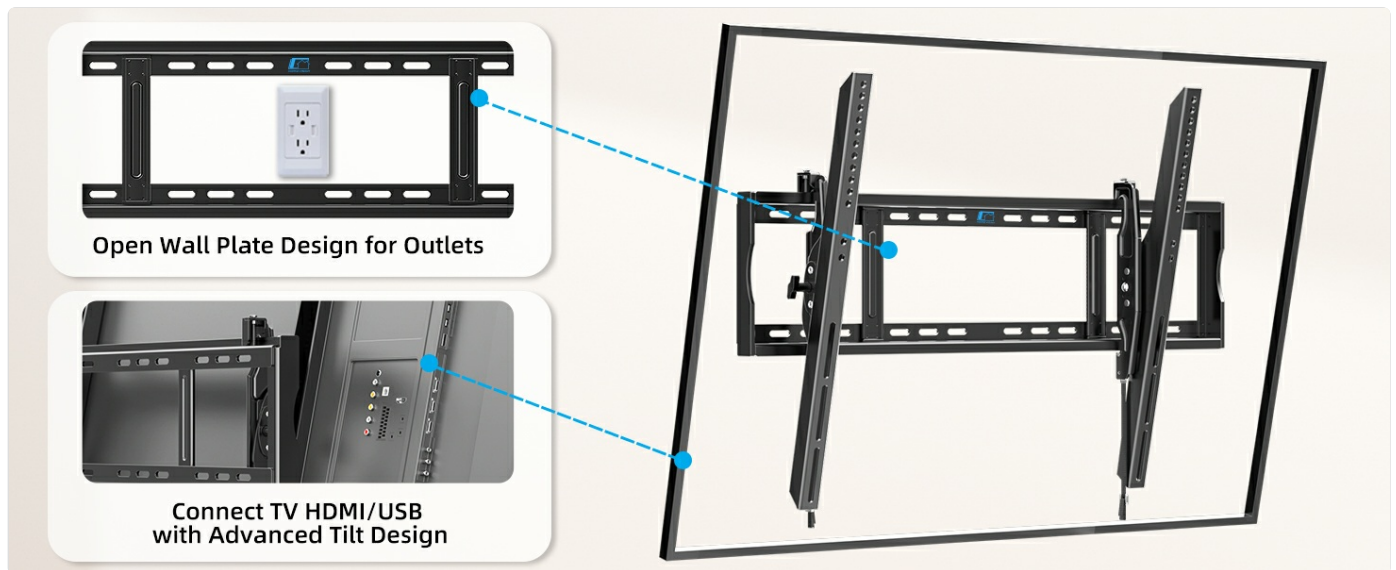


Image: Diagram showing the open wall plate design that accommodates electrical outlets and how the advanced tilt design allows for easy connection to TV HDMI/USB ports.

MAINTENANCE

To ensure the longevity and safe operation of your HOME VISION TV wall mount, follow these simple maintenance guidelines:

- **Regular Inspection:** Periodically check all screws and bolts to ensure they remain tight and secure. Over time, vibrations or minor shifts can cause fasteners to loosen.
- **Cleaning:** Dust the mount regularly with a soft, dry cloth. For stubborn marks, a slightly damp cloth can be used, but avoid harsh chemicals or abrasive cleaners that could damage the finish.
- **Weight Limits:** Never exceed the maximum weight capacity of 200 pounds. Overloading can lead to structural failure and damage to your TV or property.
- **Environmental Conditions:** Avoid installing the mount in areas with extreme temperatures, high humidity, or direct exposure to water, as these conditions can affect the material integrity.

TROUBLESHOOTING

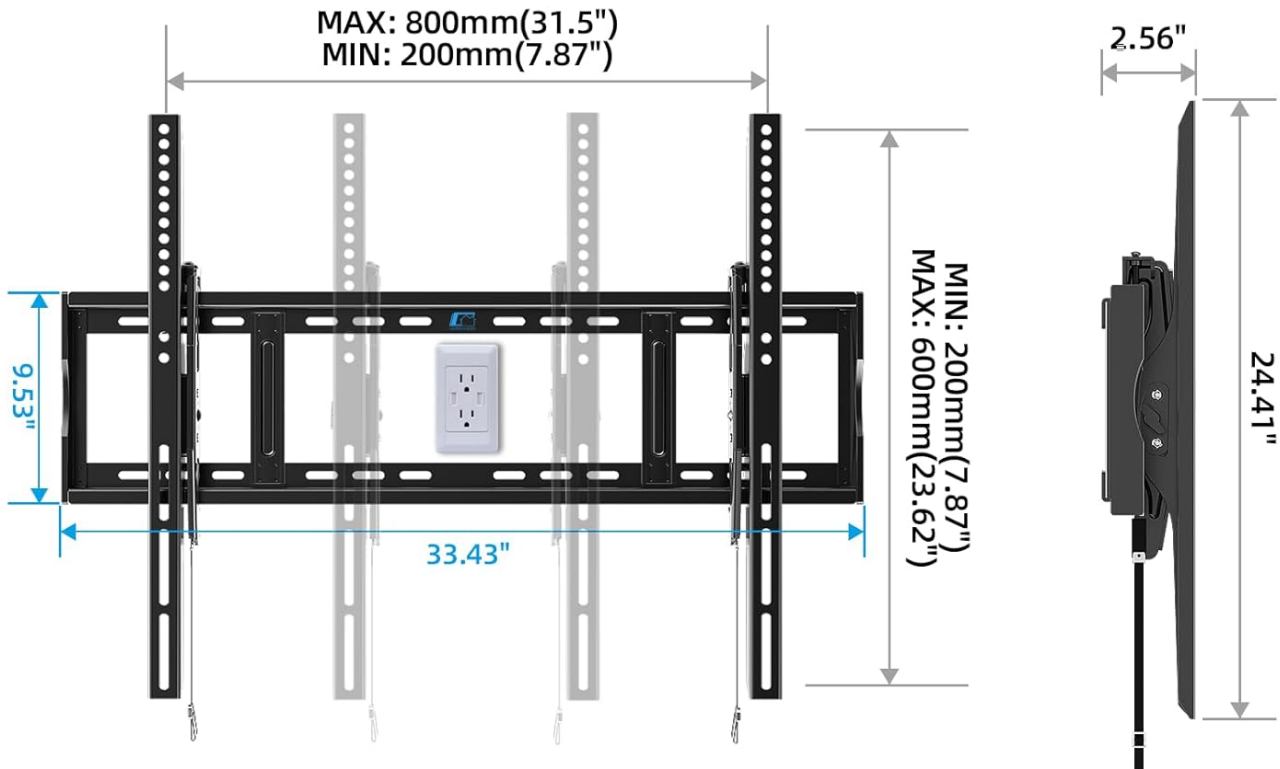
If you encounter any issues with your HOME VISION TV wall mount, please refer to the following common problems and solutions:

Problem	Possible Cause	Solution
TV is not level after installation.	Wall plate not perfectly level, or fine-tuning needed.	Use the horizontal fine-tuning feature ($\pm 1^\circ$ adjustable) on the mount to correct the level. If significant, re-check wall plate installation with a level.
TV feels loose on the mount.	Mounting screws not tight, or quick lock/release cords not engaged.	Ensure all screws attaching the brackets to the TV and the wall plate to the wall are securely tightened. Pull the quick lock/release cords to fully engage the locking mechanism.
Cannot tilt the TV.	Tilt knobs are too tight.	Loosen the tilt adjustment knobs on the side of the TV brackets. Adjust the angle, then re-tighten the knobs firmly.
Mount does not fit my TV.	Incorrect VESA pattern or TV size/weight.	Verify your TV's VESA pattern and weight against the mount's specifications (Max VESA 800x600mm, Max Load 200LBS). This mount is designed for 48-120 inch TVs.

PRODUCT SPECIFICATIONS

Specification	Detail
Brand	HOME VISION
Model Number	9801
Mounting Type	Wall Mount
Movement Type	Tilt
Material	Alloy Steel
Color	Black
Compatible TV Sizes	48 - 120 Inches
Maximum Load Capacity	200 Lbs (90 kg)
VESA Compatibility	Min: 200x200mm, Max: 800x600mm
Tilt Angle	+5° to -10°
Horizontal Adjustment	$\pm 1^\circ$
Distance from Wall	2.56 inches (minimum)
Product Dimensions	33.43 x 2.56 x 24.41 inches
Item Weight	8.23 pounds

Open Wall Plate



Easy to connect TV cables and outlets

VESA=Horizontal x Vertical(check the four holes at the back of your TV)

Fit for:

800x600mm	800x400mm	700x400mm	600x600mm	600x500mm	600x400mm
600x300mm	600x200mm	500x600mm	400x600mm	400x400mm	400x300mm
400x200mm	300x300mm	300x200mm	200x300mm	200x200mm	...

Image: Technical drawing showing the dimensions of the wall plate and VESA compatibility table for various configurations.

WARRANTY AND CUSTOMER SUPPORT

HOME VISION is committed to providing high-quality products and excellent customer service. As a company focused on wall mount TV bracket design innovation and production for 10 years, we have a professional after-sales team dedicated to assisting you.

If you have any questions, concerns, or require assistance with your HOME VISION TV wall mount, please do not hesitate to contact our professional after-sales team. We are here to provide you with a total solution every day.

Please refer to your product packaging or the retailer's website for specific warranty details and contact information.