



Manuals.plus /

› SAMSUNG /

› SAMSUNG S60D 5.0ch Soundbar User Manual

SAMSUNG HW-S60D

SAMSUNG S60D 5.0ch Soundbar User Manual

Model: HW-S60D

1. INTRODUCTION

This manual provides detailed instructions for the setup, operation, and maintenance of your SAMSUNG S60D 5.0ch Soundbar. This all-in-one soundbar delivers powerful 5-channel sound with Dolby Atmos, offering an immersive audio experience. It features built-in subwoofers for deep bass and integrates smart functionalities like Q-Symphony, SpaceFit Sound Pro, Adaptive Sound, Game Mode Pro, and Alexa Built-in.

2. WHAT'S IN THE BOX

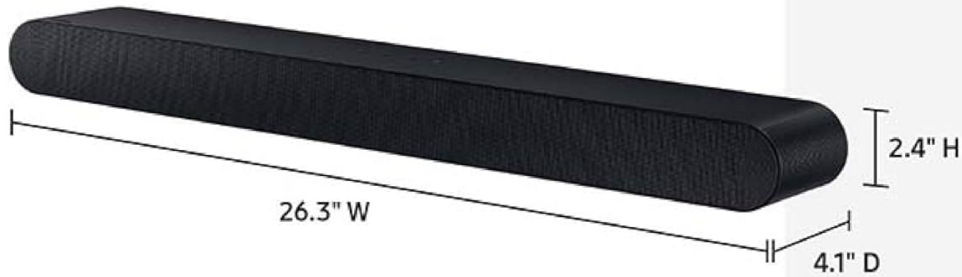
Please verify that all components are present before proceeding with the setup.

- SAMSUNG S60D Soundbar
- Remote Controller (with batteries)
- Power Adapter
- HDMI Cable
- Wallmount Kit

Model: HW-S60D

What's in the box:

- Soundbar
- HDMI Cable
- Wall Mount Kit
- Power Adapter
- Remote Controller with batteries



Dimensions:

(INCHES W x H x D):

- Soundbar: 26.3 x 2.4 x 4.1



Features and specifications subject to change.

Figure 2.1: Included components and dimensions of the SAMSUNG S60D Soundbar.

3. SETUP

3.1 Physical Placement

The SAMSUNG S60D Soundbar can be placed on a flat surface, such as a TV stand, or wall-mounted. Ensure the soundbar is positioned centrally below your television for optimal audio distribution.

- **On a TV Stand:** Place the soundbar directly in front of your TV, ensuring it does not obstruct the TV's remote sensor.
- **Wall Mounting:** Use the included wallmount kit. Refer to the detailed instructions provided with the kit for secure installation.

Cover all angles

Left. Right. Center. Sides. Activate all-around-you audio with this compact soundbar's powerful 5-channel sound with Dolby Atmos. The built-in subwoofer with passive radiator delivers a surprisingly rich seat-shaking bass.



Figure 3.1: Recommended placement of the soundbar on a TV cabinet.

3.2 Connecting to Your TV

The soundbar offers both wired and wireless connection options to your television.

3.2.1 Wired Connection (HDMI eARC)

1. Locate the HDMI eARC port on your TV and the HDMI OUT (TV-eARC) port on the soundbar.
2. Connect one end of the included HDMI cable to the TV's HDMI eARC port and the other end to the soundbar's HDMI OUT (TV-eARC) port.
3. Ensure your TV's audio output settings are configured to use the HDMI eARC/ARC port.

3.2.2 Wireless Connection (Wireless Dolby Atmos)

For compatible Samsung TVs (2022-2024 models), you can enjoy Wireless Dolby Atmos without HDMI cables.

1. Ensure both your TV and soundbar are powered on and within range.
2. On your TV, navigate to the sound output settings and select the option to connect to a Samsung Soundbar wirelessly.
3. Follow the on-screen prompts to pair the soundbar.

Adapts to your space

Get room-filling sound calibrated to your space, with a soundbar that analyzes your environment and automatically optimizes the audio accordingly.

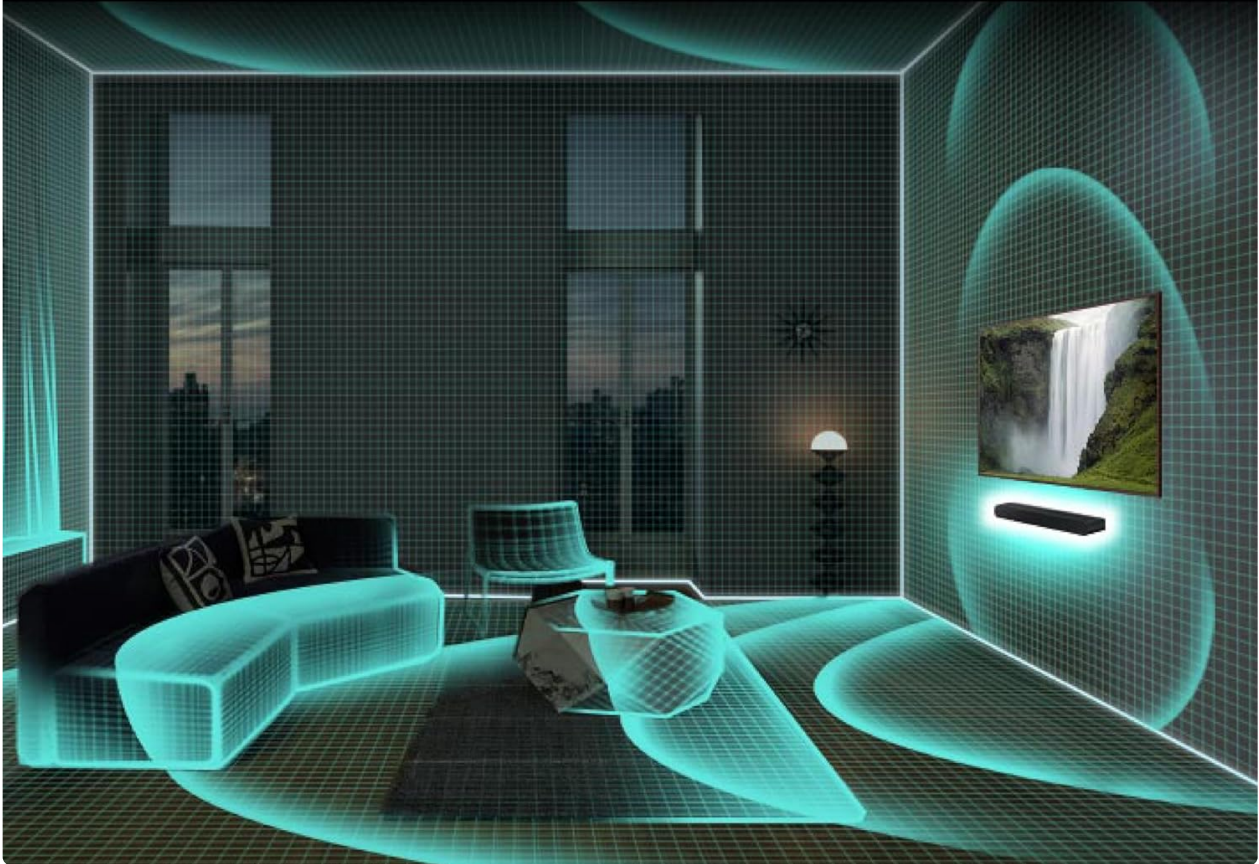


Figure 3.2: Rear panel connections of the soundbar.

3.3 Power Connection

1. Connect the power adapter to the DC IN port on the soundbar.
2. Plug the power adapter into a wall outlet.

4. OPERATING THE SOUNDBAR

4.1 Basic Controls

Use the included remote control to manage your soundbar's functions.

- **Power Button:** Turns the soundbar on or off.
- **Volume Buttons (+/-):** Adjusts the master volume.
- **Mute Button:** Mutes or unmutes the sound.
- **Source Button:** Cycles through input sources (e.g., HDMI, Bluetooth, Wi-Fi).

4.2 Sound Features and Modes

The SAMSUNG S60D Soundbar incorporates several advanced audio technologies to enhance your listening experience.

- **Q-Symphony:** When paired with a compatible 2020-2024 Samsung TV, Q-Symphony allows the TV speakers and soundbar to operate simultaneously, creating a richer, more expansive soundstage.

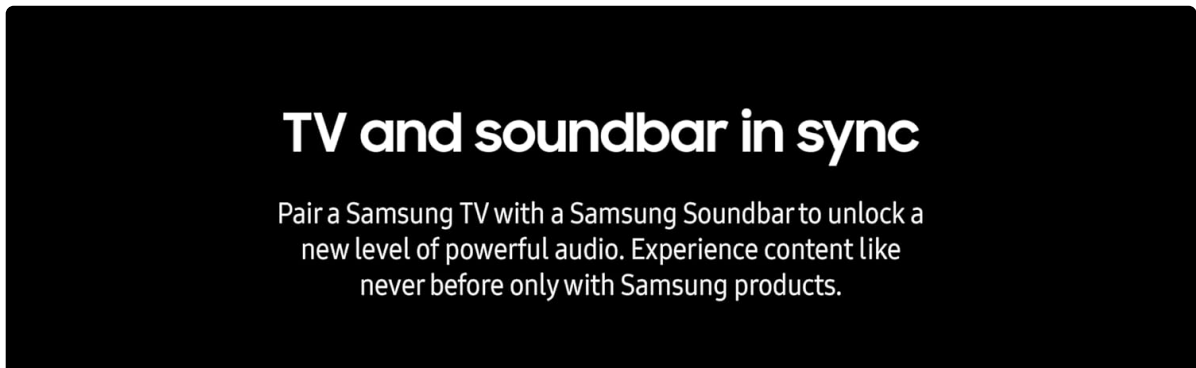


Figure 4.1: Q-Symphony in action, synchronizing TV and soundbar audio.

- **Wireless Dolby Atmos:** Experience immersive, three-dimensional audio without the need for HDMI cables, provided you have a compatible Samsung TV.

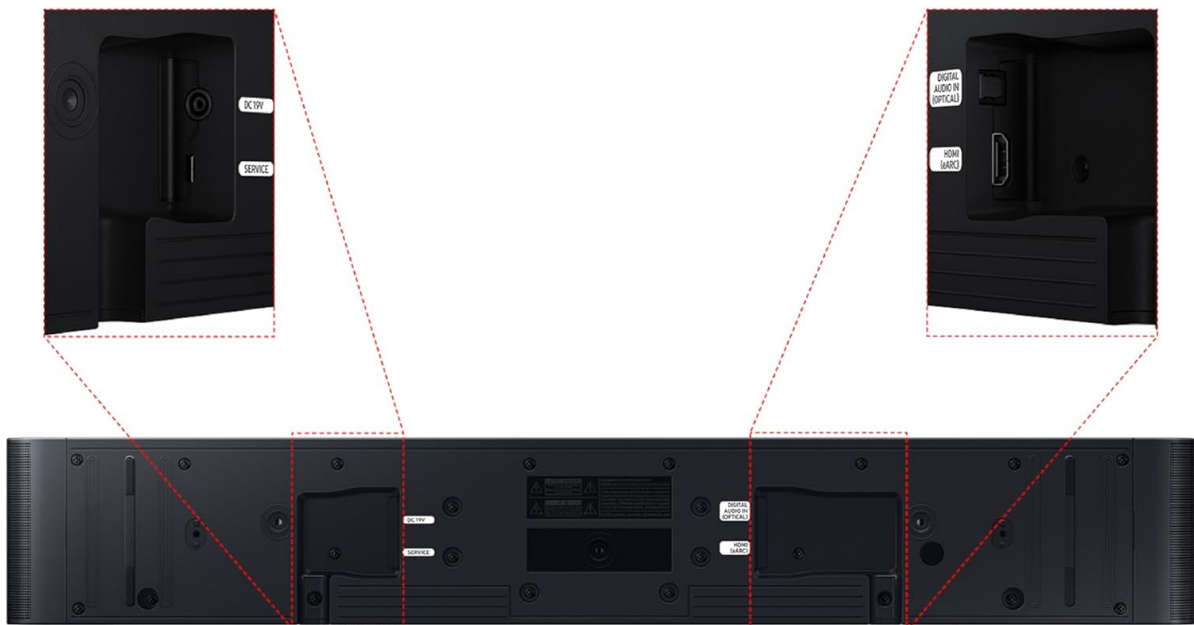
Cut loose

Feel surrounded. Cue up Dolby Atmos sound and skip the cumbersome HDMI cables. Feel free to arrange your space exactly how you want without compromising the audio experience*



Figure 4.2: Wireless Dolby Atmos for cable-free immersive sound.

- **SpaceFit Sound Pro:** This feature analyzes your room's environment and automatically optimizes the soundbar's audio output for accurate and clear sound tailored to your space.



* Images are simulated and for illustration purposes only.

Figure 4.3: SpaceFit Sound Pro adapting audio to your room.

- **Adaptive Sound:** Intelligently optimizes audio in real-time by analyzing scenes to emphasize important sounds, ensuring dialogue is clear even at low volumes.
- **Active Voice Analyzer (AVA):** Breaks down room noise to ensure on-screen voices are always optimized, preventing dialogue from being drowned out by ambient sounds.
- **Game Mode Pro:** Activates automatically in sync with your TV, utilizing powerful up-firing speakers, acoustic beam, and strong woofers for an enhanced 3D gaming audio experience.

4.3 Smart Integration

The soundbar supports various smart services and voice assistants for convenient control and connectivity.

- **Built-in Alexa:** Use voice commands to control your soundbar, play music, get information, and manage smart home devices.
- **Chromecast Built-in:** Stream audio content directly from compatible apps on your mobile device.
- **AirPlay 2:** Stream audio from Apple devices (requires iOS 11.4 or later).

Smart ways to connect

Connect your devices and control everything with our soundbar that integrates your favorite voice assistants and smart services like Built-in Alexa*, Chromecast**, Airplay*** and more.



Figure 4.4: Smart integration with various platforms.

5. MAINTENANCE

To ensure the longevity and optimal performance of your SAMSUNG S60D Soundbar, follow these maintenance guidelines:

- **Cleaning:** Gently wipe the exterior surfaces with a soft, dry cloth. Avoid using abrasive cleaners, waxes, or solvents.
- **Ventilation:** Ensure the soundbar's vents are not obstructed to prevent overheating.
- **Storage:** If storing the soundbar for an extended period, disconnect it from power and store it in a cool, dry place.

6. TROUBLESHOOTING

If you encounter issues with your soundbar, refer to the following common problems and solutions:

- **No Power:** Ensure the power adapter is securely connected to both the soundbar and a working wall outlet.

- **No Sound:**

- Check that the soundbar is powered on and not muted.
- Verify the correct input source is selected on the soundbar.
- Confirm the TV's audio output is set to the correct source (e.g., HDMI eARC, Bluetooth).
- Adjust the volume on both the soundbar and the TV.

- **Remote Control Not Working:**

- Check and replace the batteries (2 AAA batteries required).
- Ensure there are no obstructions between the remote and the soundbar.

- **Bluetooth Pairing Issues:**

- Ensure the soundbar is in Bluetooth pairing mode.
- Disable and re-enable Bluetooth on your source device.
- Move the source device closer to the soundbar.

7. SPECIFICATIONS

| Feature | Specification |
|--------------------------------------|------------------------------|
| Model Name | E1SAMHWS60DRB |
| Speaker Type | Soundbar |
| Surround Sound Channel Configuration | 5.0 |
| Product Dimensions (D x W x H) | 4.1" x 26.3" x 2.4" |
| Item Weight | 6 Pounds |
| Mounting Type | Wall Mount |
| Material | Plastic, Aluminum, Wood, MDF |
| Control Method | Remote |
| Wireless Communication Technology | Bluetooth, Wi-Fi |
| Power Source | Corded Electric |
| Supported Internet Services | Amazon Music, Amazon Alexa |
| UPC | 887276823935 |
| Color | Black |
| Manufacturer | SAMSUNG |

8. WARRANTY AND SUPPORT

8.1 Limited Warranty

This SAMSUNG S60D Soundbar comes with a limited warranty. Please refer to the warranty card included

with your product for specific terms, conditions, and duration of coverage.

8.2 Further Assistance

For additional support, detailed user guides, or service inquiries, please visit the official Samsung support website or refer to the comprehensive PDF user manual:

- [Download Official User Manual \(PDF\)](#)
- [Visit the Samsung Support Website](#)