

Phomemo M835-White-Phomemo

Phomemo M835 Portable Wireless Thermal Printer User Manual

Model: M835-White-Phomemo

1. INTRODUCTION

The Phomemo M835 Portable Wireless Thermal Printer is designed for convenience and efficiency, offering inkless printing solutions for various needs. Its compact and lightweight design makes it ideal for travel and on-the-go use.

This manual provides comprehensive instructions for setting up, operating, and maintaining your Phomemo M835 printer, ensuring optimal performance and longevity.



Image: Phomemo M835 Portable Printer showcasing its compact size and compatibility with different paper types and mobile devices.

2. KEY FEATURES

- **Portable Design:** Weighing only 1.5 lbs, the M835 is easily transportable, fitting into briefcases or backpacks. It is designed for mobile use, such as for truckers printing bills or receipts on the road.
- **Inkless Thermal Printing:** Utilizes thermal technology, eliminating the need for ink, ribbons, or toner, reducing operational costs and maintenance.
- **Built-in Paper Bin:** Features an internal rolled paper bin, allowing for convenient storage and printing without carrying extra thermal paper. An A4 size thermal paper roll is included inside the printer.
- **Multi-size Paper Support:** Compatible with 8.5"/A4, 4.33"/4", 3.15"/3", and 2.08"/2" thermal paper rolls, as well as individual-sheet and folded thermal paper.
- **High Compatibility:** Connects to iOS and Android phones/tablets via Bluetooth using the "Phomemo" App. Also connects to Windows/Mac/Linux PCs via Type-C USB cable (driver download required from

M835.phomemo.com).

- **Rechargeable Battery:** Equipped with a 2600 mAh battery, capable of printing up to 150 sheets continuously on a full charge. Charges via Type-C.

M835 Small Mobile Printer for Truck/Car/Travel



Image: Phomemo M835 printer being used by a truck driver, highlighting its portability and utility for mobile professionals.

3. WHAT'S IN THE BOX

- 1 x Phomemo M835 Portable Thermal Printer
- 1 x A4 Size Thermal Paper Roll (pre-installed in the printer paper bin)
- 1 x Flannel Storage Bag
- 1 x Type-C Charging Cable
- 1 x Quick Start Guide

Inkless Thermal Printer

No ink, no toner, save money and time



Image: Contents of the Phomemo M835 printer box, including the printer, paper roll, and accessories.

4. SETUP GUIDE

4.1. Initial Setup

1. **Charge the Printer:** Connect the printer to a power source using the provided Type-C charging cable. The power indicator light will show charging status.
2. **Load Paper:** The printer comes with an A4 thermal paper roll pre-installed. If loading new paper, open the top cover by pressing the two circular buttons on the sides. Ensure the paper is correctly aligned and feed it through the rollers. Close the cover securely.



Image: Close-up of the Phomemo M835 printer showing the paper loading mechanism and adjustable stopper.

4.2. Connecting to Your Device

4.2.1. Mobile Device (iOS & Android) via Bluetooth

1. **Download the App:** Search for "Phomemo" in your device's app store (Google Play Store for Android, Apple App Store for iOS) and install the official app.
2. **Enable Bluetooth:** Turn on Bluetooth on your mobile device.
3. **Pair the Printer:** Open the Phomemo app. The app will guide you through the pairing process. Select "M835" from the list of available devices. The printer's power indicator light will turn green when successfully connected.

Small Wireless Portable Printer

Easy to carry, print anytime, anywhere



Image: Phomemo M835 printer showing Bluetooth and USB connection options for mobile devices and laptops.

4.2.2. Computer (Windows/Mac/Linux) via USB

1. **Download Driver:** Visit M835.phomemo.com to download the appropriate driver for your operating system (Windows, Mac OS, Linux).
2. **Install Driver:** Follow the on-screen instructions to install the downloaded driver.
3. **Connect Printer:** Use the provided Type-C USB cable to connect the printer to your computer.
4. **Select Printer:** In your computer's print settings, select "M835" as your printer.

Windows Setup Video:

Your browser does not support the video tag.

Video: Step-by-step guide on how to set up the Phomemo M835 Thermal Printer on a Windows operating system.

Mac Setup Video:

Your browser does not support the video tag.

Video: Instructions for downloading and installing the driver for the Phomemo M835 Portable Printer on Mac.

Linux Setup Video:

Your browser does not support the video tag.

Video: Guide on how to set up the Phomemo M835 Portable Printer on a Linux operating system.

5. OPERATING INSTRUCTIONS

5.1. Printing from the Phomemo App

1. **Open the App:** Ensure your printer is connected via Bluetooth.
2. **Select Content:** Choose from various printing options: Document Print, Print Web, Print Images, or Scan.
3. **Adjust Settings:** Customize print settings such as density (light, medium, heavy) and number of copies.
4. **Print:** Tap the "Print" button to start printing.



Image: Phomemo M835 printer in action, demonstrating its ability to print documents quickly and efficiently.

5.2. Printing from a Computer

1. **Prepare Document:** Open the document or image you wish to print on your computer.
2. **Access Print Function:** Use your application's print function (e.g., File > Print).

- 3. **Select Printer:** Choose "M835" from the list of available printers.
- 4. **Adjust Settings:** Configure print settings as needed (e.g., page range, copies).
- 5. **Print:** Click "Print" to send the job to the printer.

6. MAINTENANCE

- **Cleaning:** Regularly wipe the exterior of the printer with a soft, dry cloth. For the thermal print head, use a cotton swab lightly dampened with isopropyl alcohol. Ensure the printer is off and cool before cleaning.
- **Paper Storage:** Store thermal paper in a cool, dry place away from direct sunlight and heat to prevent fading or damage.
- **Battery Care:** To prolong battery life, avoid fully discharging the printer frequently. Charge it regularly, especially if it will be stored for an extended period.

7. TROUBLESHOOTING

Problem	Possible Cause	Solution
Printer not turning on	Low battery; Power button not pressed correctly.	Charge the printer; Long-press the power button for 3 seconds.
Poor print quality (faint/blurry)	Low battery; Dirty print head; Incorrect paper type; Low print density setting.	Charge the printer; Clean the print head; Ensure you are using thermal paper; Adjust print density in app/driver settings.
Unable to connect via Bluetooth	Bluetooth off; Printer not in pairing mode; App issues.	Ensure Bluetooth is on; Restart printer and app; Re-pair device.
Paper jam or misfeed	Improper paper loading; Damaged paper.	Open cover, remove paper, re-load correctly; Use undamaged thermal paper.

8. PRODUCT SPECIFICATIONS

- **Model Name:** M835-White-Phomemo
- **Dimensions:** 10.39"D x 3.07"W x 1.77"H
- **Item Weight:** 1.5 Pounds
- **Printing Technology:** Thermal
- **Printer Output:** Monochrome
- **Max Print Speed (Monochrome):** 15 ppm

- **Maximum Black and White Print Resolution:** 300 x 300 dpi
- **Connectivity Technology:** Bluetooth, USB (Type-C)
- **Battery Capacity:** 2600 mAh (Rechargeable)
- **Compatible Devices:** Smartphones, PC, Tablets (iOS, Android, Windows, Mac, Linux)
- **Supported Paper Sizes:** 8.5"/A4, 4.33"/4", 3.15"/3", 2.08"/2" (Thermal Paper Roll, Individual-sheet, Folded)

9. WARRANTY AND SUPPORT

The Phomemo M835 Portable Wireless Thermal Printer comes with a**Limited Warranty**. For detailed warranty terms and conditions, please refer to the Quick Start Guide included in your package or visit the official Phomemo website.

For technical support, troubleshooting assistance, or warranty claims, please contact Phomemo Customer Service:

Email: support@phomemo.com



Tel (US Only): +1 855 957 5321

WhatsApp: +86 15338193665

Web: www.phomemo.com

© 2024 Phomemo. All rights reserved.

Related Documents

	<p>Phomemo M08F Quick Start Guide: Computer and Smartphone Printing</p> <p>A concise guide to setting up and using the Phomemo M08F portable printer for printing from computers (Windows, Mac, Linux) via USB and from smartphones via Bluetooth, including setup instructions and regulatory information.</p>
	<p>Phomemo M832 A4 Portable Thermal Printer User Guide and Tips</p> <p>Information and usage tips for the Phomemo M832 A4 Portable Thermal Printer by Zoolion, including setup instructions and troubleshooting advice.</p>

Guide de prise en main rapide

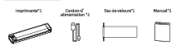
M08F

imprimante portable

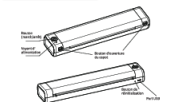


Veuillez lire attentivement ce manuel et
conservé-le bien afin de pouvoir le consulter.

01. Filaires d'origine



02. Description de l'imprimante



03. Description de l'état du voyant

Nom	État	Description de la fonction
État allumé	État allumé	État normal
État clignotant	État clignotant	État d'erreur
État éteint	État éteint	État d'attente

04. Fonction du bouton

Fonction du bouton	Description
Bouton d'alimentation	Appuyer sur le bouton d'alimentation pour allumer l'imprimante.
Bouton d'impression	Appuyer sur le bouton d'impression pour imprimer.

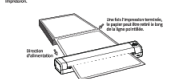
05. Attention

05.1 Attention à l'installation
05.2 Attention à l'utilisation
05.3 Attention à l'entretien

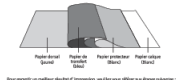
- 05.1 Attention à l'installation
05.2 Attention à l'utilisation
05.3 Attention à l'entretien



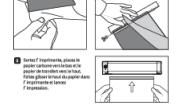
05.4 Attention à l'entretien
05.5 Attention à l'installation



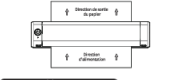
06. Installation et utilisation



06.1 Installation et utilisation
06.2 Installation et utilisation



06.3 Installation et utilisation
06.4 Installation et utilisation



06.5 Installation et utilisation
06.6 Installation et utilisation



06.7 Installation et utilisation
06.8 Installation et utilisation

06.9 Installation et utilisation
06.10 Installation et utilisation

06.11 Installation et utilisation
06.12 Installation et utilisation

06.13 Installation et utilisation
06.14 Installation et utilisation

06.15 Installation et utilisation
06.16 Installation et utilisation

Phomemo M08F Portable Printer Quick Start Guide

A quick start guide for the Phomemo M08F portable thermal printer, covering setup, operation, app installation, and troubleshooting.

A281M/A282M/A285M Troubleshooting

1. Product Model

Phomemo A281M, A282M, A285M Thermal Receipt Printer
This manual is for the Phomemo A281M, A282M, A285M Thermal Receipt Printer. It provides detailed information about the printer's features, specifications, and troubleshooting steps. Please read this manual carefully before using the printer.

Model	A281M/A282M/A285M
Resolution	300 DPI
Print Speed	150 mm/s
Print Width	58 mm
Print Length	100 mm
Connectivity	USB, Bluetooth, Wi-Fi
Power Supply	5V DC, 1A
Operating Temperature	0°C to 40°C
Storage Temperature	-20°C to 60°C
Humidity	20% to 80% RH
Weight	150g
Dimensions	110mm x 60mm x 25mm

2. Product Usage

A. For Printing

1. Connect the printer to your computer or mobile device using the provided cable or wireless connection.

2. Install the Phomemo printer driver on your computer or mobile device.

3. Open the Phomemo app on your mobile device and select the printer you want to use.

4. Select the document you want to print and click the print button.

5. The printer will print the document.

6. The printer will print the document.

7. The printer will print the document.

8. The printer will print the document.

9. The printer will print the document.

10. The printer will print the document.

11. The printer will print the document.

12. The printer will print the document.

13. The printer will print the document.

14. The printer will print the document.

15. The printer will print the document.

16. The printer will print the document.

17. The printer will print the document.

18. The printer will print the document.

19. The printer will print the document.

20. The printer will print the document.

21. The printer will print the document.

22. The printer will print the document.

23. The printer will print the document.

24. The printer will print the document.

25. The printer will print the document.

26. The printer will print the document.

27. The printer will print the document.

28. The printer will print the document.

29. The printer will print the document.

30. The printer will print the document.

31. The printer will print the document.

32. The printer will print the document.

33. The printer will print the document.

34. The printer will print the document.

35. The printer will print the document.

36. The printer will print the document.

37. The printer will print the document.

38. The printer will print the document.

39. The printer will print the document.

40. The printer will print the document.

[Phomemo A281M/A282M/A285M Troubleshooting Guide](#)

A comprehensive troubleshooting guide for Phomemo A281M, A282M, and A285M thermal printers, covering product information, usage, common machine and connection issues, printing problems, and app-related questions.