

[Manuals.plus](#) /

> [Outsunny](#) /

> Outsunny 2-Piece Swivel Patio Dining Chairs User Manual

Outsunny CA84G-300V00GY0231

Outsunny 2-Piece Swivel Patio Dining Chairs User Manual

Model: CA84G-300V00GY0231

Brand: Outsunny

INTRODUCTION

Thank you for choosing the Outsunny 2-Piece Swivel Patio Dining Chairs. This manual provides essential information for the safe assembly, operation, and maintenance of your new chairs. Please read it thoroughly before use and retain it for future reference.

SAFETY INFORMATION

WARNING: Failure to follow these safety instructions may result in injury or damage to the product.

- Assembly may require careful handling of small parts. Keep small parts away from children.
- Do not exceed the maximum weight recommendation of **264 lbs (120 kg)** per chair. Overloading can cause structural failure and injury.
- Clean with a damp cloth only. Avoid harsh chemicals or abrasive scrubbing that may damage the chair's finish or fabric.
- Ensure all bolts and connections are securely tightened before each use. Periodically check and re-tighten as necessary.
- Do not stand on the chairs.
- Use on a flat, stable surface to prevent tipping.

PACKAGE CONTENTS

Verify that all components are present and undamaged before beginning assembly. If any parts are missing or damaged, please contact customer support.

- 2 x Swivel Patio Dining Chairs (disassembled)
- 1 x Hardware Pack (bolts, washers, nuts, Allen wrench)
- 1 x Assembly Instruction Manual (this document)



Image: Components of the Outsunny 2-Piece Swivel Patio Dining Chairs.

SETUP AND ASSEMBLY

Assembly is required for these chairs. It is recommended that two people assemble the chairs for ease and safety.

1. **Unpack Components:** Carefully remove all parts from the packaging and lay them out on a clean, soft surface (e.g., a blanket or cardboard) to prevent scratching.
2. **Identify Parts:** Refer to the included parts diagram (if available in physical manual) and identify each component.
3. **Assemble Base:** Attach the chair legs to the swivel mechanism and circular base using the provided bolts and Allen wrench. Do not fully tighten bolts until all connections are made.
4. **Attach Seat and Backrest:** Connect the seat frame and backrest frame to the assembled base and armrests. Ensure the "S" shape backrest is oriented correctly for ergonomic support.
5. **Secure Armrests:** Fasten the curved armrests to both the seat and backrest sections.
6. **Final Tightening:** Once all parts are loosely assembled, gradually tighten all bolts evenly until secure. Do not overtighten.



Image: Assembled chair with key dimensions (Width: 22.8", Depth: 26.4", Height: 42.1").



Image: Two fully assembled Outsunny patio chairs ready for use.

OPERATING INSTRUCTIONS

The Outsunny Swivel Patio Dining Chairs are designed for comfort and relaxation with their unique features:

- **360° Swivel Function:** The chair base allows for a full 360-degree rotation. Simply apply gentle pressure with your feet to turn the chair in any direction. This feature is ideal for dynamic social settings or enjoying different views.
- **Rocking Function:** The chair is equipped with an elasticity function that allows for a gentle back-and-forth rocking motion. Lean back slightly and push off with your feet to initiate the rocking. This provides a soothing and comfortable experience.

HIGH COMFORT



- 360° Swivel
- Rocking Function

Image: Detail of the chair's base highlighting the 360° swivel and rocking capabilities.

PRODUCT DETAILS



Curved armrest



Wide seat



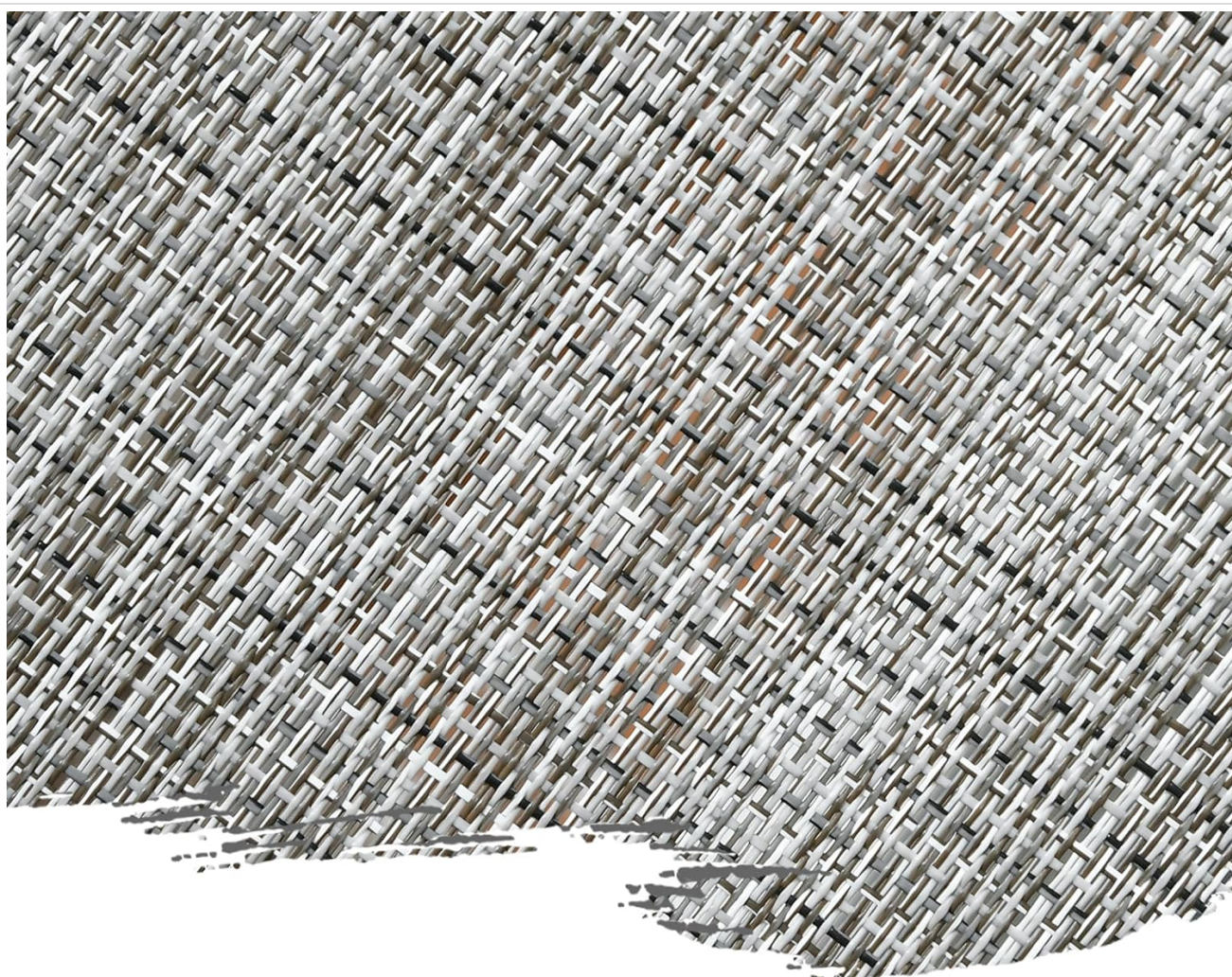
S" shape ergonomic
design backrest

Image: Key comfort features including the curved armrest, wide seat, and ergonomic S-shaped backrest.

MAINTENANCE

Proper care will extend the life and appearance of your Outsunny chairs:

- **Cleaning:** Wipe the metal frame and mesh fabric with a damp cloth. For stubborn dirt, a mild soap solution can be used, followed by rinsing with clean water and drying thoroughly. Do not use harsh chemicals, abrasive cleaners, or stiff brushes, as these can damage the finish and fabric.
- **Inspection:** Periodically inspect all bolts and connections to ensure they remain tight. Re-tighten as necessary to maintain stability and safety.
- **Storage:** During prolonged periods of non-use or in harsh weather conditions (e.g., heavy rain, snow, extreme cold), it is recommended to cover the chairs or store them indoors to protect them from the elements and prolong their lifespan.



BREATHABLE MESH FABRIC



Provides a cool sitting feeling



Wear and fade resistant

Image: Detail of the breathable mesh fabric, which is wear and fade resistant.

TROUBLESHOOTING

If you encounter any issues with your chairs, please refer to the following common solutions:

- **Chair feels wobbly:** Check all assembly bolts and ensure they are securely tightened. Ensure the chair is on a flat, even surface.
- **Swivel/Rocking mechanism is stiff:** Ensure the mechanism is clean and free of debris. A small amount of silicone-based lubricant (avoid oil-based lubricants) can be applied to moving parts if necessary, but typically the mechanism is designed to operate smoothly without lubrication.
- **Noise during operation:** Check for loose bolts. Ensure no foreign objects are lodged in the swivel or rocking mechanism.

If problems persist after attempting these solutions, please contact Outsunny customer support for further assistance.

SPECIFICATIONS

Feature	Detail
Brand	Outsunny
Model Number	CA84G-300V00GY0231
Colour	Dark Grey
Overall Dimensions	22.8" W x 26.4" D x 42.1" H (58 x 67 x 107 cm)
Material	Powder-coated Steel Frame, Breathable Mesh Fabric
Weight Capacity	264 lbs (120 kg)
Special Features	Arm Rest, Back Support, Rocking, Set of 2, Swivel
Item Weight	24.04 kg (per set)

WARRANTY AND SUPPORT

Outsunny products are manufactured to high-quality standards. For information regarding warranty coverage, product support, or to purchase replacement parts, please visit the official Outsunny website or contact their customer service department. Please have your model number (CA84G-300V00GY0231) and purchase details ready when contacting support.

You can find more information and contact details on the [Outsunny Brand Store on Amazon](#).