

## NATFIRE NE3

# NATFIRE NE3 Wireless Otoscope Ear Cleaner User Manual

Model: NE3 | Brand: NATFIRE

## 1. INTRODUCTION

Thank you for choosing the NATFIRE NE3 Wireless Otoscope Ear Cleaner. This high-precision tool is designed to provide a clear view of your ear canal, assisting in safe and effective ear wax removal. Please read this manual thoroughly before use to ensure proper operation and maintenance.

## 2. PACKAGE CONTENTS

Verify that all items listed below are included in your package:

- NATFIRE NE3 Wireless Otoscope Ear Cleaner Device
- USB Charging Cable
- Assorted Ear Spoon Heads (various types for different needs)
- User Manual



Figure 2.1: Overview of the NATFIRE NE3 Ear Cleaner and its included accessories.

### 3. KEY FEATURES

The NATFIRE NE3 is equipped with advanced features for a superior ear cleaning experience:

- **High-Precision Camera:** Integrated 1296P pixel camera for clear, detailed views of the ear canal.
- **6 LED Lights:** Provides ample illumination for optimal visibility inside the ear.
- **Wireless Connectivity:** Easy WiFi connection to your smartphone for real-time viewing.
- **3.6mm Lens Inner Diameter:** Slim design for comfortable and safe insertion.
- **Dust and Fog Proof (IPX5):** Ensures clear vision and durability in various conditions.
- **3-Axis Smart Gyroscope:** Maintains stable image orientation regardless of device angle.
- **Blue-Ray Proof Lens:** Protects against harmful blue light.
- **Replaceable Ear Spoon Heads:** Multiple types of ear spoons made from safety material, designed to prevent cross-infection and ensure comfortable use.

# 3-AXIS SMART GYROSCOPE

## Upgrade Protection Cover

- Stronger Wifi Signal Penetration

**IPX5**

Waterproof  
be Dust-proof

**100°**

Viewing angle

**3.6mm**

Lens Inner Diameter

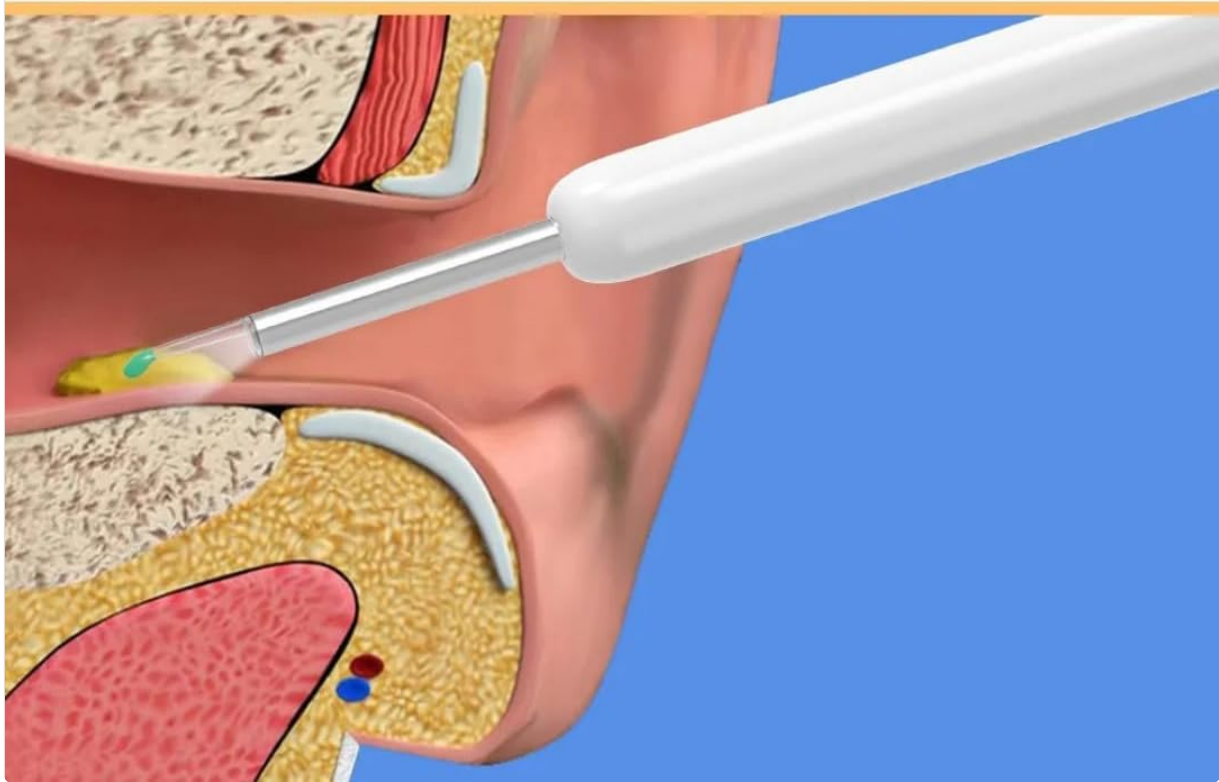


Figure 3.1: Advanced features including 3-Axis Smart Gyroscope and IPX5 rating.



1296p Pixels  
professional otoscope



Real Picture

## 1296P PIXELS Professional Oscope

3.6mm lens length | Anti-dust and anti-fog

 <p>6 LED Lights</p>	 <p>1296p Pixels</p>	 <p>Dust-proof</p>
 <p>Fog-proof</p>	 <p>Blue-ray proof lens</p>	 <p>3.6mm Lens Diameter</p>



Figure 3.2: Oscope camera details including pixel resolution and lighting.

## Equipped with a super-fast WiFi chip, the has a very smooth transmission

It provides the highest speed for the app to function the camera display, making it easy and smooth to set up and auto-connect the product to your phone

**100°**  
Viewing angle

**15-20<sub>mm</sub>**  
Focal length

**3.6<sub>mm</sub>**  
Lens inner diameter



Figure 3.3: Wireless connectivity and optical specifications.

## 4. SETUP GUIDE

Follow these steps to set up your NATFIRE NE3 Ear Cleaner:

1. **Download the App:** Scan the QR code provided in the user manual or on the product packaging to download the "SL YLZ" app compatible with your Android or iOS device.
2. **Power On the Device:** Press and hold the power button on the otoscope for 2 seconds until the blue light flashes. This indicates the device is ready for connection.



3. **Connect to Wi-Fi:** Go to your phone's Wi-Fi settings. Find and select the Wi-Fi network named "HNDEC-XXXXXX" (the X's will be unique to your device). No password is required.
4. **Open the App:** Once connected to the Wi-Fi, open the "SL YLZ" app. The device's power key will turn blue, indicating a successful connection. You can now view the live feed from the otoscope.

## USING STEPS



Holding down the power key for 2 seconds till the blue light flashes. It means ready to connect with APP

Open the APP, the following Click the button to search WIFI interface appears



Find WIFI: HNDEC-XXXXXX and click

Return to the APP. The powerkey turning to blue means connectsuccessfully

Enter into normal use, as shown below

Figure 4.1: Visual guide for initial setup and app connection.

## 5. OPERATING INSTRUCTIONS

Once the device is set up and connected to your phone, you can begin using it for ear inspection and cleaning:

1. **Attach an Ear Spoon:** Select a suitable ear spoon head from the provided accessories and securely attach it to the tip of the otoscope. Ensure it is firmly in place to prevent accidental detachment during use.
2. **Positioning:** Gently insert the otoscope into your ear canal while observing the live feed on your smartphone. Adjust the angle slowly to get a clear view of the ear canal and any wax buildup.
3. **Cleaning:** Use the attached ear spoon to carefully and gently remove ear wax. Always move slowly and avoid pushing wax deeper into the ear canal. Do not insert the device too far.
4. **Monitoring:** Continuously monitor the live video feed on your phone to guide your movements and ensure safe cleaning.
5. **Completion:** Once finished, gently remove the device from your ear.



Figure 5.1: Proper usage of the ear cleaner with real-time visual guidance.

# Replaceable ear spoon head

## Take it off Avoid cross infection

Good ear spoon design is round full comfortable  
safe and firm



Figure 5.2: Details on replaceable ear spoon heads for hygiene and safety.

## 6. CARE AND MAINTENANCE

Proper care ensures the longevity and hygiene of your device:

- **Cleaning the Lens:** The lens is dust and fog proof (IPX5 rated). After each use, gently wipe the lens with a soft, dry cloth. For stubborn residue, a slightly damp cloth can be used, but ensure no liquid enters the



device body.

- **Cleaning Ear Spoon Heads:** Detach the ear spoon heads and wash them with soap and water. Rinse thoroughly and allow them to air dry completely before storing or reusing.
- **Charging:** Connect the device to a power source using the provided USB charging cable. The indicator light will show charging status. Ensure the device is fully charged before extended use.
- **Storage:** Store the device and accessories in a clean, dry place away from direct sunlight and extreme temperatures.

## Water-proof, dust-proof and fog-proof lens

**IPX5**  
waterproof  
be dust-proof

**100 °C steam**  
Antifog



Figure 6.1: The device's lens is designed to be water, dust, and fog proof for easy cleaning.

## 7. TROUBLESHOOTING

If you encounter issues with your NATFIRE NE3, refer to the following common problems and solutions:

Problem	Possible Cause	Solution
Device not turning on	Low battery; Power button not pressed long enough.	Charge the device fully. Press and hold the power button for 2 seconds.
Cannot connect to Wi-Fi	Incorrect Wi-Fi selection; Device not powered on.	Ensure the device is on and the blue light is flashing. Select the correct "HNDEC-XXXXXX" network. Restart both device and phone.
Unclear image on app	Dirty lens; Poor Wi-Fi signal; Incorrect focal distance.	Clean the lens. Ensure stable Wi-Fi connection. Adjust the distance to the ear canal (optimal focal length 15-20mm).
App crashes or freezes	App version outdated; Phone system issues.	Update the app to the latest version. Restart your phone.

## 8. PRODUCT SPECIFICATIONS

Specification	Detail
Model	NE3
Product Dimensions	0.5 x 0.5 x 5 inches
Weight	1.5 ounces
Lens Inner Diameter	3.6 mm
Viewing Angle	100°
Focal Length	15-20 mm
LED Lights	6
Waterproof Rating	IPX5 (Dust and Fog Proof)
Manufacturer	NETFIRE N3
Country of Origin	China

## 9. IMPORTANT SAFETY INFORMATION

Please read and adhere to the following safety guidelines to prevent injury or damage to the device:






- This device is intended for personal ear inspection and cleaning. Do not use it for medical diagnosis or treatment.
- Always use the device gently and avoid inserting it too deeply into the ear canal to prevent injury to the eardrum.
- If you experience any pain, discomfort, or bleeding during use, stop immediately and consult a medical professional.
- Keep the device out of reach of children. Adult supervision is required if used by minors.
- Do not attempt to disassemble or modify the device. This will void the warranty and may cause damage or injury.


- Use only the provided charging cable and accessories.
- Statements regarding dietary supplements have not been evaluated by the FDA and are not intended to diagnose, treat, cure, or prevent any disease or health condition.

## 10. WARRANTY AND CUSTOMER SUPPORT

The NATFIRE NE3 Wireless Otoscope Ear Cleaner comes with a standard manufacturer’s warranty. For detailed warranty information, please refer to the warranty card included in your package or visit our official website. If you have any questions, require technical assistance, or need to report an issue, please contact our customer support team. Contact details can be found on our official website or on the product packaging.

### Related Documents - NE3

	<p><a href="#">Wireless Visual Earpick User Manual - NATFIRE</a></p> <p>Comprehensive user manual for the NATFIRE Wireless Visual Earpick. Learn how to download the app, connect via Wi-Fi (iOS/Android), understand product specifications, charging, and troubleshoot common issues.</p>
	<p><a href="#">NE3 Wireless Visible Earpick User Manual: Visual Ear Cleaning Guide</a></p> <p>Comprehensive user manual for the NE3 Wireless Visible Earpick. Learn how to use, troubleshoot, and maintain your digital ear cleaner for safe and effective ear wax removal.</p>
	<p><a href="#">NE3 Wireless Visible Earpick User Manual   Setup, Use, and Troubleshooting</a></p> <p>Comprehensive user manual for the NE3 Wireless Visible Earpick. Learn how to connect, use, and troubleshoot this visual ear cleaning device with detailed instructions, product parameters, and safety precautions.</p>
	<p><a href="#">NE3 Wireless Visible Earpick User Manual - Setup, Features, and Troubleshooting</a></p> <p>Comprehensive user manual for the NE3 Wireless Visible Earpick. Learn how to connect, use, and troubleshoot this digital otoscope. Includes product specifications and safety precautions.</p>
	<p><a href="#">NE3 Wireless Visible Earpick User Manual</a></p> <p>User manual for the NE3 Wireless Visible Earpick, detailing setup, usage, product parameters, troubleshooting, and cautions. Includes instructions for downloading the app, connecting to Wi-Fi, and operating the device.</p>

	<p><a href="#">NATFIRE HS50 LED Headlamp User Manual - Features, Specifications, and Operation Guide</a></p> <p>Detailed user manual for the NATFIRE HS50 LED Headlamp, covering its parameter description, operating instructions, lighting modes, low voltage warnings, overheat protection, technical specifications, and charging procedures.</p>
---	---