

Manuals+

[Q & A](#) | [Deep Search](#) | [Upload](#)

manuals.plus /

- › [Habit Control](#) /
- › [Habit Control UL-2 Bluetooth Smart Lock User Manual](#)

Habit Control UL-2

Habit Control UL-2 Bluetooth Smart Lock User Manual

Model: UL-2

INTRODUCTION

This manual provides detailed instructions for the installation, operation, and maintenance of your Habit Control UL-2 Bluetooth Smart Lock. Please read this guide thoroughly before using the device to ensure proper functionality and safety.

PRODUCT OVERVIEW

The Habit Control UL-2 is a versatile smart lock designed for cabinets and drawers, offering both timed and regular locking functionalities controlled via a smartphone application. It is intended to assist in managing access to various items.



Image: Habit Control UL-2 Bluetooth Smart Lock, showing the main lock unit, latch, and smartphone app interface.

Key Features:

- **Dual Locking Modes:** Offers both a simple lock mode for immediate access control and a timer lock mode for scheduled access. The timer mode includes options for overrides or no overrides, catering to different control needs.
- **Smartphone Control:** Compatible with iOS and Android devices, allowing remote operation within a 10-meter range via Bluetooth Low Energy (BLE).
- **Extended Timer Settings:** Supports setting timers for up to 366 days.
- **Automatic Locking Options:** Configurable to automatically re-lock 5 seconds after opening or remain unlocked until manually re-locked.
- **Versatile Installation:** Can be installed internally on various furniture types such as cabinets (swing, sliding), drawers, and wooden boxes.
- **Two Installation Methods:** Features adhesive installation for a non-damaging, hidden setup, or screw installation for enhanced security.
- **App-Controlled Features:** Includes unlock history tracking, user access sharing, schedule mode, and admin/guest access management.
- **Low Battery Warning:** Provides in-app notifications for low battery levels.

PACKAGE CONTENTS

Verify that all items are present in the package:

- Smart Lock Device
- Latch Component
- Two types of Double-Sided Tape
- One 1400 mAh Battery
- Screws and Screwdriver

SETUP AND INSTALLATION

The Habit Control UL-2 Smart Lock offers two installation methods: adhesive for a hidden, non-damaging setup, and screws for increased security.

Method 1: Adhesive Installation (No Drilling Required)

1. **Connect Lock's Base to Latch:** Ensure the lock's base is securely attached to the latch component.



Image: Illustration showing how to connect the main lock unit to its latch component.

2. **Apply Double-Sided Tape:** Stick the provided double-sided tape to the back of the lock unit.



**STICK DOUBLE-SIDED TAPE
TO THE LOCK**

Image: Hands applying double-sided adhesive tape to the back surface of the smart lock.

- 3. Position the Lock:** Remove the liner from the tape and align the lock with the sideline of your cabinet or drawer. Ensure the placement allows the latch to engage properly when the door/drawer is closed.



**REMOVE LINER AND
ALIGN IT WITH THE CABINET'S SIDELINE**

Image: The smart lock positioned inside a cabinet, with the adhesive liner removed, ready for alignment.

- 4. Secure the Latch:** Close the cabinet or drawer gently and press firmly to ensure the latch component adheres securely to the inside of the door/drawer.



Image: A hand pressing on a cabinet door to ensure the latch component adheres properly after closing.

- 5. Test and Finalize:** Unlock the device using your smartphone app and open the cabinet. If the lock opens easily, mark the positions with a pencil. Detach the lock with test tape, then re-attach it with strong (constant) tape at the marked position. Wait 24 hours for the adhesive to form a stronger bond before regular use.



Image: A smart lock installed inside a cabinet, with a pencil marking its position for final adhesive application after testing.

Method 2: Screw Installation (For Added Security)

For enhanced security, the lock can be attached using the provided screws. Follow the initial positioning steps from Method 1, then use the included screws and screwdriver to secure the lock and latch components to the furniture. Ensure screws are tightened appropriately to avoid damaging the furniture or the lock.

VERY EASY TO INSTALL

WAY 1



No tools



No Drilling



No Damage



STICK-ON
(Wait 24 hours for
a stronger bond.)



**CAN BE ATTACHED
WITH SCREWS FOR
EXTRA SECURITY**
(provided)



WAY 2



SCROLL DOWN FOR DETAILED INSTRUCTIONS

Image: Visual representation of both adhesive (stick-on) and screw-in installation methods for the smart lock.

Important Installation Notes:

- Do not install the lock within 4 feet (approximately 1.2 meters) of a microwave oven to prevent interference.
- Ensure the furniture surface is clean and dry before applying adhesive tape.

OPERATING INSTRUCTIONS

The Habit Control UL-2 Smart Lock is controlled via a dedicated smartphone application.

App Download and Connection

Download the "Habit Control" app from your device's app store (available for iOS and Android phones). Once installed, open the app and follow the on-screen instructions to connect to your UL-2 Smart Lock via Bluetooth.

Download the app
Available on Android & IOS (Only on phones)

Constant App Functionality Improvement

App Controlled **UNIVERSAL LOCK**

Image: The Habit Control app interface on a smartphone, with a QR code for download and an illustration of the lock's universal application in a home setting. Scan the QR code to download the app: <https://qr1.be/DYS2>

Lock Modes

How it Works

Available on iOS & Android **Phones Only**

Step 1 Install a lock into your furniture

Step 2 Choose a lock option:

Simple lock

Regular lock for your personal stuff or for keeping dangerous items out of kids reach.

or

Timer lock

Set the timer to limit access nobody could open the lock until the timer runs out.

Image: The Habit Control app interface displaying options for 'Simple lock' and 'Timer lock'.

Simple Lock Mode:

In this mode, the lock functions as a standard lock. You can lock and unlock it instantly via the app. This is suitable for general security or keeping items out of reach.

Timer Lock Mode:

This mode allows you to set a specific duration during which the lock cannot be opened. It is designed for self-discipline or controlled access. The app offers two timer sub-modes:

- **With Overrides:** Allows for manual unlocking before the timer expires, suitable for shared use or developing willpower.
- **No Overrides:** Prevents unlocking until the timer fully expires, ideal for strict self-discipline.



Image: The Habit Control smart lock installed inside a cabinet, illustrating the two timer modes: with overrides and no overrides.

App Features

The Habit Control app provides several functionalities to enhance your experience:

- **Auto Unlock on Low Battery:** When enabled in settings, the lock will automatically unlock if the battery level becomes critically low.
- **Auto Lock:** If enabled, the lock will automatically re-lock 5 seconds after being opened.
- **Sounds:** Toggles audible beeps when the lock is opened or closed.

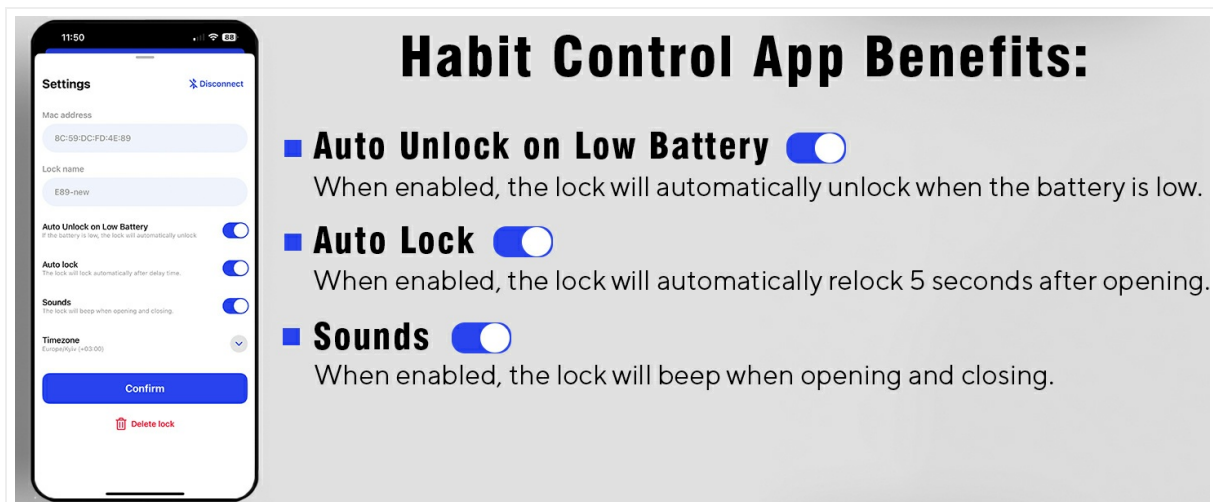


Image: Screenshot of the Habit Control app settings, showing options for 'Auto Unlock on Low Battery', 'Auto Lock', and 'Sounds'.

- **Share Lock:** Allows you to grant access to your lock to other users via email.
- **User Roles:** Assign roles such as 'Guest' (can only open a regular lock) or 'Admin' (full access, except deleting the lock from the system, which only the owner can do).

- **Unlock Count:** Configure access for a single unlock or unlimited unlocks.



Habit Control App Benefits:

- **Share lock**
 Share access to your lock with anyone, anytime, via email – no matter where you are.
- **User role**
 Guest (only allows you to open a regular lock, timer lock is unavailable for guest)
 Admin access (almost full, except the possibility to delete the lock from the system, it can do only owner).
- **Unlock count**
 Once (Allows a single unlock only)
 Many (Unlimited unlocks)

Image: Screenshot of the Habit Control app's 'Share lock' interface, demonstrating how to add users, assign user roles (Guest/Admin), and set unlock counts (Once/Many).

- **Activity Tracking:** Monitor who accessed the lock, the time of access, and the number of unlocks.



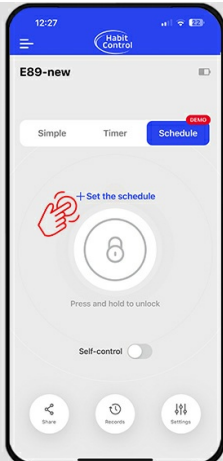
Habit Control App Benefits:

- **Activity tracking**
 Track who accessed the lock, the time of access, and the number of unlocks.

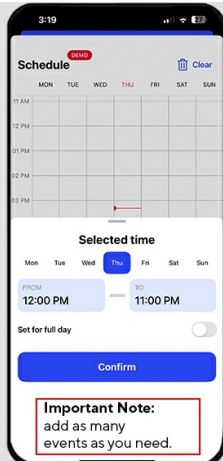
Image: Screenshot of the Habit Control app's 'Activity tracking' feature, displaying a log of access events with dates and times.

- **Schedule Mode:** Set specific times or days for the lock to be active or inactive. This feature allows for customized access schedules.

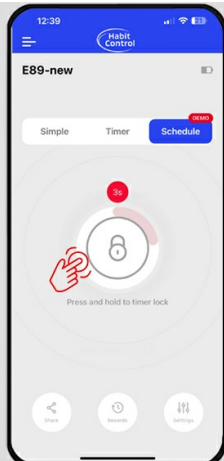
**SCHEDULE
(DEMO)
TEMPORARILY
FREE**



Click on "+ Set the schedule" →



Create new event →



Press and hold to activate

Image: A sequence of screenshots from the Habit Control app demonstrating how to set up and activate a schedule for the lock.

Unlocking the Device

To unlock the Habit Control UL-2 Smart Lock, you must use a compatible smartphone with the Habit Control app installed. The lock does not open automatically after a timer expires; manual unlocking via the app is always required.



Image: An illustration showing various items (e.g., snacks, alcohol, medication, electronics) that can be secured by the smart lock, with a prominent note stating that a phone is required to unlock it.

MAINTENANCE

Battery Information

The Habit Control UL-2 Smart Lock is powered by a 1400 mAh battery, offering an estimated life of 1 year or 1000 unlocking cycles. The app will provide a low battery warning when replacement is needed. To replace the battery, carefully open the lock unit and insert a new 1400 mAh battery, ensuring correct polarity.

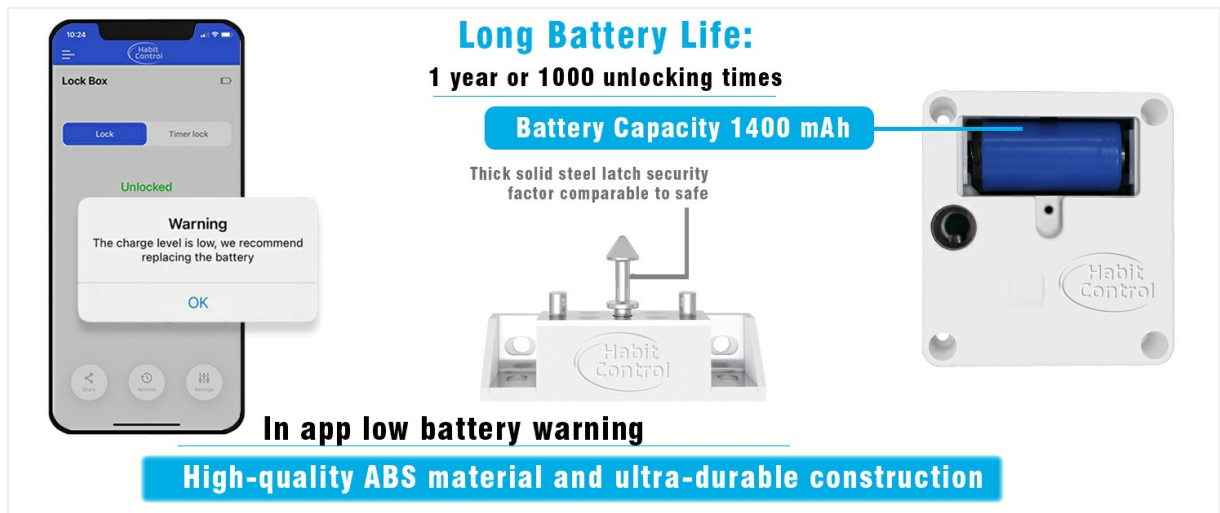


Image: An illustration highlighting the smart lock's long battery life (1 year or 1000 unlocks) and the in-app low battery warning feature.

TROUBLESHOOTING

If you encounter issues with your Habit Control UL-2 Smart Lock, consider the following:

- **Connectivity Issues:** Ensure your smartphone's Bluetooth is enabled and you are within 10 meters of the lock. Restarting the app or your phone may resolve connection problems.
- **Lock Not Responding:** Check the battery level in the app. If the battery is low, replace it. Ensure the lock is properly installed and not obstructed.
- **Timer Not Functioning as Expected:** Verify the timer settings within the app. Remember that the lock requires manual unlocking via the app even after a timer expires.
- **Adhesive Not Holding:** Ensure the surface was clean and dry during installation. Allow the recommended 24-hour curing time for the adhesive to achieve maximum strength. Consider using the screw installation method for a more permanent solution.

SPECIFICATIONS

Feature	Detail
Brand	Habit Control
Model Name	Smart Lock (UL-2)
Lock Type	Regular or Timer Lock
Special Features	Optional auto-lock, Self-control feature, Share access, Silent mode, Tracking access history
Item Dimensions (L x W x H)	2.44 x 3.14 x 0.79 inches
Material	Acrylonitrile Butadiene Styrene, Alloy Steel
Item Weight	0.36 Pounds (5.8 ounces)
Controller Type	Android, iOS
Control Method	App

Connectivity Protocol	Bluetooth
Battery Included	Yes (1400 mAh)
Mounting Type	Freestanding, Tabletop (Internal Installation)
UPC	716715816002

WARRANTY AND CUSTOMER SUPPORT

For warranty information or technical assistance, please contact Habit Control customer support. Refer to the product packaging or the Habit Control official website for contact details.