



Manuals.plus /

› NAOEVO /

› NAOEVO 12 Inch LED Light Bar and 4PCS 4 Inch LED Pod Lights Instruction Manual

NAOEVO SM-1244INCH-W

NAOEVO 12 Inch LED Light Bar and 4PCS 4 Inch LED Pod Lights Instruction Manual

Brand: **NAOEVO** | Model: **SM-1244INCH-W**

PRODUCT OVERVIEW

The NAOEVO 12 Inch LED Light Bar and 4PCS 4 Inch LED Pod Lights kit provides powerful and versatile illumination for a wide range of vehicles and applications. Designed for durability and high performance, these lights enhance visibility and safety in various driving conditions.



Image: The complete NAOEVO LED light kit, including one 12-inch light bar and four 4-inch LED pod lights, packaged for distribution.

Key Features

- **Ultra Bright Illumination:** Equipped with 180pcs high-quality SMD3030 LED chips, delivering 54000lm of 6500k white light for superior road visibility.
- **Spot & Flood Combo Beam:** Features a triple-row design with a 15° spotlight for long-distance focus and a 120° flood beam for wide area exposure. Includes a 45° adjustable stand for flexible beam direction.
- **Durable Construction:** Built with die-cast aluminum housing, advanced sealing technology (IP68 waterproof), and a sturdy PC lens to withstand harsh environmental conditions like rain, snow, and sandstorms.
- **Efficient Heat Dissipation:** Each light is designed with 10 cooling fans on the back to effectively dissipate heat, ensuring a long lifespan of up to 50,000 hours.
- **Wide Application Versatility:** Suitable for various vehicles including trucks, cars, UTVs, ATVs, and boats, and ideal for off-road, fog, driving, and general outdoor lighting needs.

WIDER & FURTHER



NAOEVO

 Bright

 540W 54000LM

 Broad Long Distance



OTHER

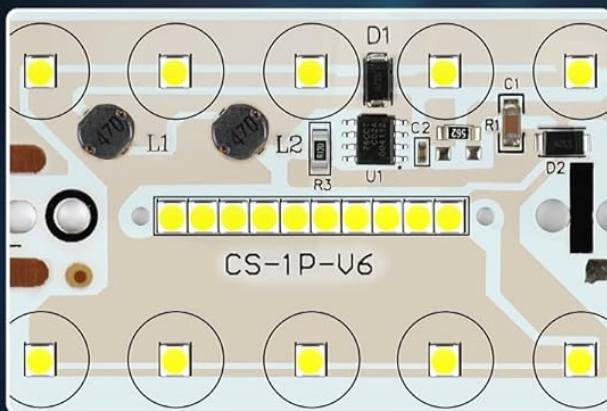
 Dim

 25W 1000LM

 Narrow Short Range

Image: Visual comparison demonstrating the wider and further light projection capability of NAOEVO lights compared to standard alternatives.

HIGH PERFORMANCE

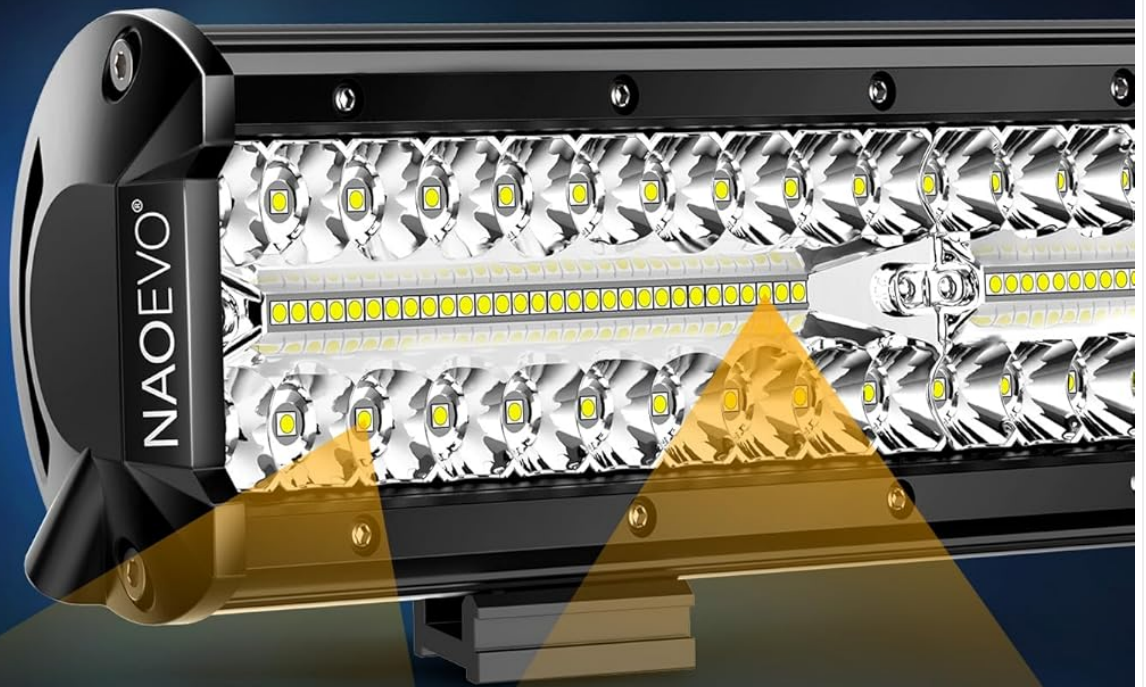


1 Triple-row High-intensity SMD3030 Chips Provide Long-distance Illumination And Clear Visibility.

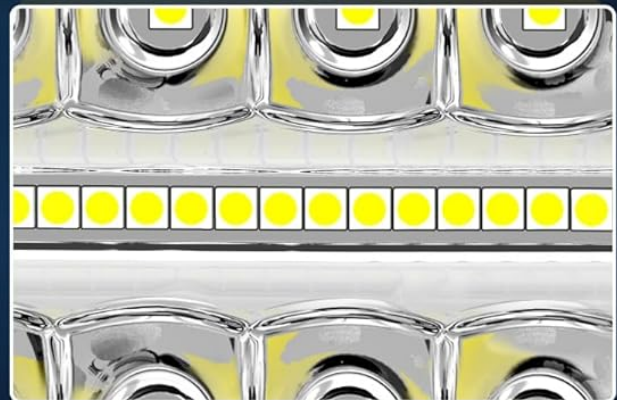
2 Advanced Reflector Cup For Extreme Light Efficiency Allows Multi-angle Refraction

Image: Detailed view of the internal structure, highlighting the triple-row high-intensity SMD3030 LED chips and advanced reflector cups designed for maximum light efficiency.

SPOT FLOOD COMBO BEAM



▲ **15°** Spotlight Achieves High Focus, Long Distance Lighting Effect.



▲ **120°** Floodlight Enable a Wide Field of Vision While Driving.

Image: Illustration of the spot and flood combo beam pattern, demonstrating how the 15° spotlight provides focused, long-distance lighting and the 120° flood beam offers wide area coverage.

WHAT'S IN THE BOX

The NAOEVO LED Light Bar and Pod Lights kit includes the following components:

- 1 Pc 12inch LED Light Bar

- 4 Pcs 4inch LED Pods
- 5 Set Mounting Accessories

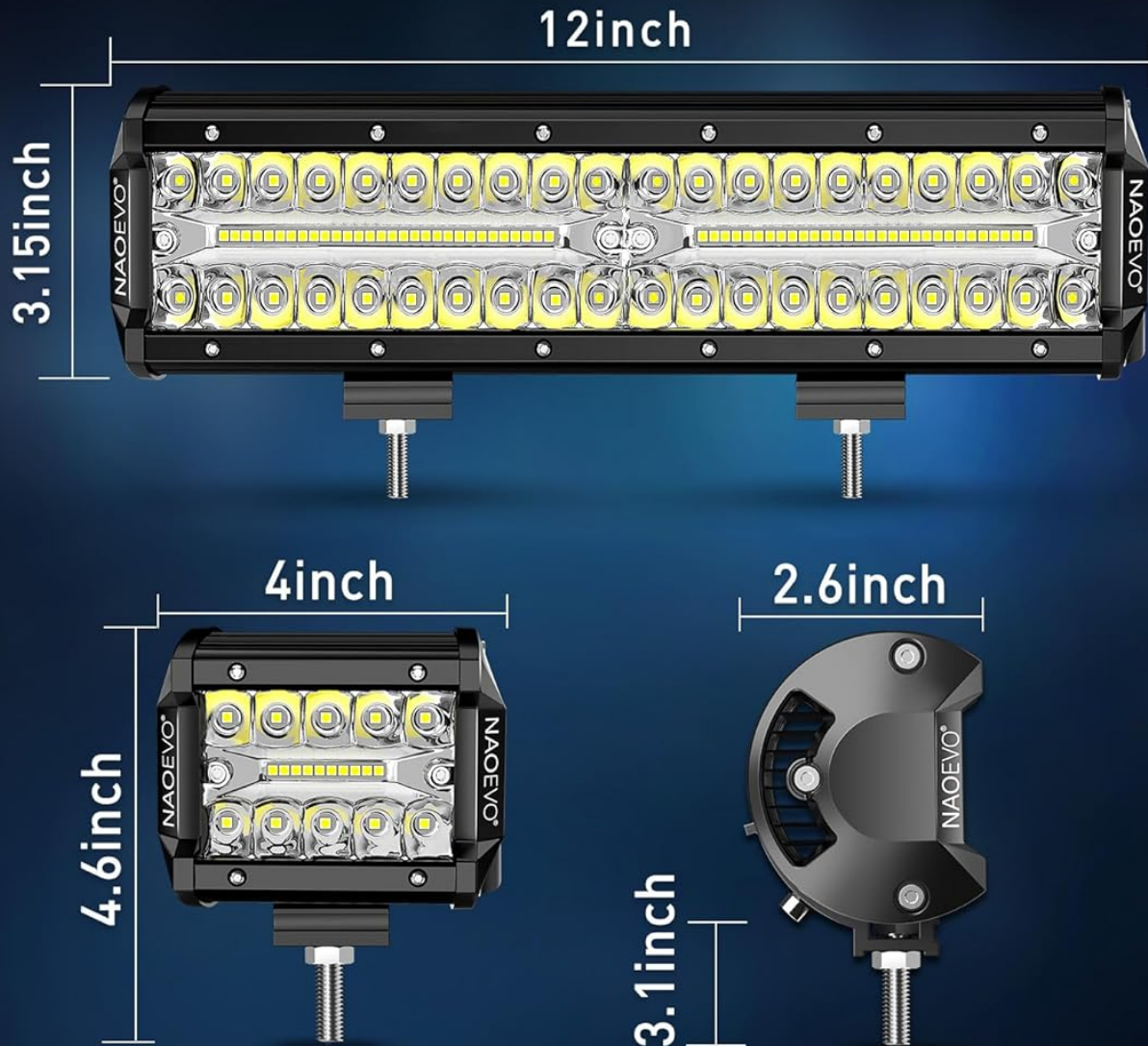


Image: A visual representation of all items included in the product package, showing the light bar, pod lights, and various mounting accessories.

SPECIFICATIONS

Attribute	Detail
Brand	NAOEVO
Model Number	SM-1244INCH-W
Light Source Type	LED (SMD3030 chips)
Brightness	54000 Lumens
Color Temperature	6500 Kelvin (White Light)
Voltage	12 Volts
Wattage	540 Watts
Beam Angle (Spot)	15 Degrees
Beam Angle (Flood)	120 Degrees
Material	Die-cast Aluminum Housing, PC Lens
Waterproof Rating	IP68
Lifespan	Up to 50,000 hours
Product Dimensions (Light Bar)	15.74"L x 6.88"W x 2.83"H
Item Weight	4.29 pounds (1.95 Kilograms)

PRODUCT DIMENSION



Package List

- 1 Pc 12Inch LED Light Bar
- 4 Pcs 4Inch LED Pods
- 5 Set Mounting Accessories

Image: Diagram illustrating the precise dimensions of both the 12-inch LED light bar and the 4-inch LED pod lights, along with a list of included package contents.

SETUP AND INSTALLATION

The NAOEVO LED light kit is designed for straightforward installation. Please follow these steps carefully. **Note: A wiring harness is not included and must be purchased separately.**

1. **Preparation:** Before beginning, ensure your vehicle's power is off. Gather all necessary tools, including wrenches, screwdrivers, and wire strippers.
2. **Mounting Location:** Identify a suitable mounting location on your vehicle (e.g., bumper, roof rack, grille). Ensure the location provides a stable surface and does not obstruct vehicle functions or existing lights.
3. **Attach Brackets:** Secure the provided mounting brackets to the light bar and pod lights using the included hardware. The brackets are adjustable by 45 degrees, allowing you to set the desired beam direction.
4. **Secure Lights:** Mount the assembled light bar and pod lights to your chosen location on the vehicle. Tighten all bolts securely to prevent movement during operation.
5. **Wiring Connection:** Connect the lights to your vehicle's electrical system. It is highly recommended to use a dedicated wiring harness (not included) with a relay and fuse for proper power distribution and protection. Connect the positive wire to the relay, the negative wire to a ground point, and the switch wire to your desired control switch.
6. **Test Functionality:** Once all connections are made, turn on your vehicle's power and test the lights to ensure they function correctly. Adjust the angle of the lights as needed for optimal illumination.

EASY INSTALLATION

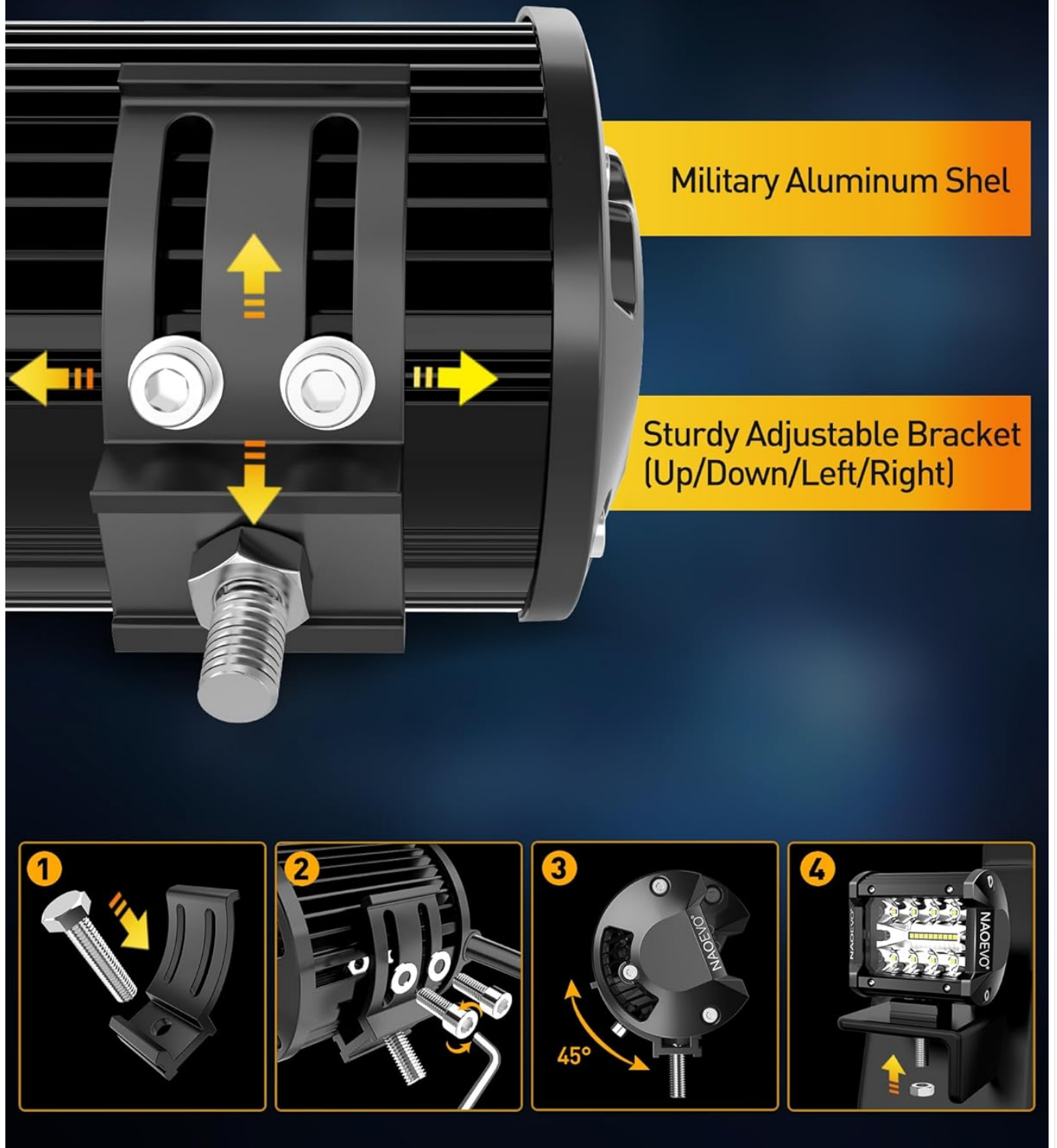


Image: Visual guide detailing the easy installation process, showing how to attach the military aluminum shell and adjust the sturdy bracket for optimal positioning.

OPERATING INSTRUCTIONS

Operating your NAOEVO LED lights is simple once installed:

- **Power On/Off:** Use the installed switch to turn the LED lights on or off. Ensure your vehicle's ignition is in the 'ON' or 'ACC'

position if wired to an accessory circuit.

- **Beam Adjustment:** If needed, loosen the mounting bolts slightly to adjust the vertical angle of the light bar and pod lights. Re-tighten the bolts firmly after adjustment. The 45-degree adjustable stand allows for precise aiming of the light beam.
- **Optimal Use:** These lights are designed for off-road, fog, or auxiliary driving purposes. Always check local regulations regarding the use of auxiliary lighting on public roads.



Image: A white Jeep Wrangler showcasing the NAOEVO 12-inch LED light bar mounted on the front bumper and 4-inch LED pod lights on the A-pillars, illuminating a dark, open area.

WIDE APPLICATION



Image: Collage demonstrating the wide range of applications for NAOEVO LED lights, showing them installed on different vehicle types such as a Jeep, UTV, SUV, and a large truck, highlighting their versatility.

MAINTENANCE

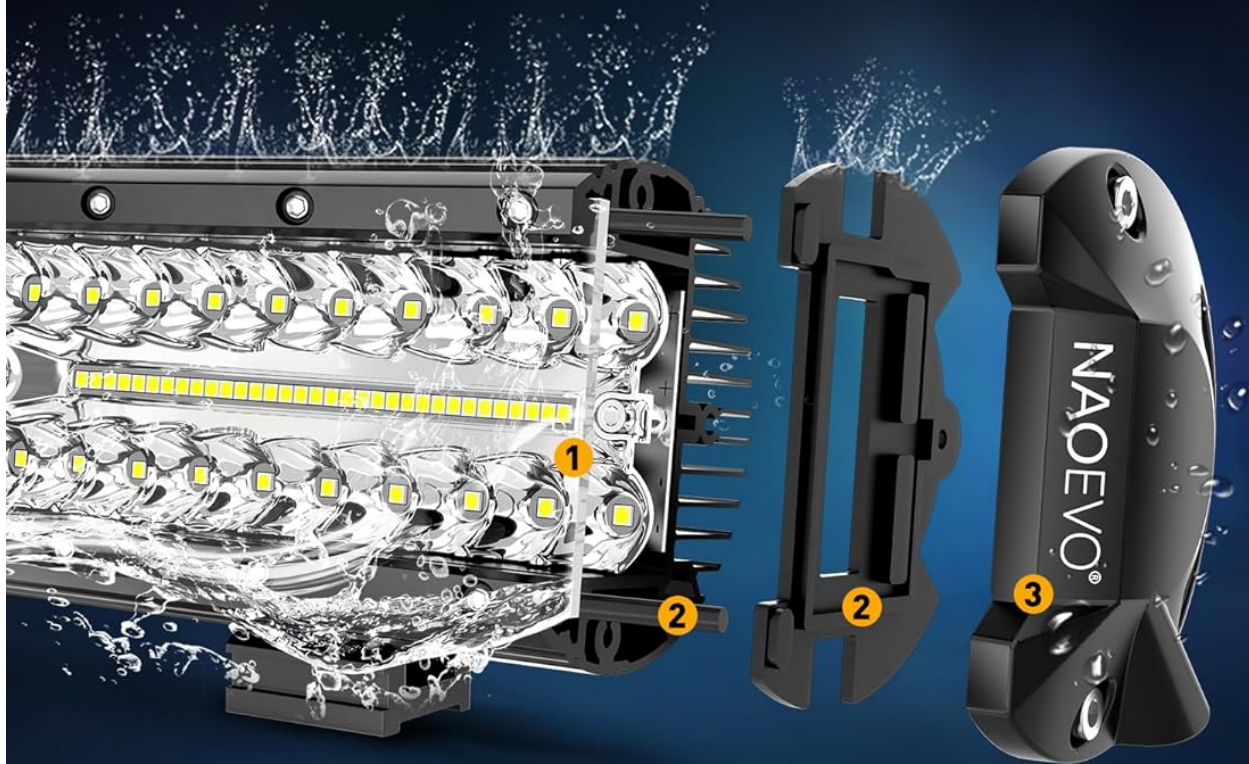
To ensure the longevity and optimal performance of your NAOEVO LED lights, follow these maintenance guidelines:

- **Cleaning:** Regularly clean the PC lens and aluminum housing with a soft cloth and mild soap and water. Avoid abrasive

cleaners or harsh chemicals that could damage the lens or finish.

- **Inspect Wiring:** Periodically check all wiring connections for signs of wear, corrosion, or loose terminals. Ensure all connections remain secure and insulated.
- **Check Mounting:** Verify that the mounting brackets and hardware are still securely fastened. Re-tighten any loose bolts to prevent vibration or misalignment.
- **Cooling Fins:** Keep the cooling fins on the back of the lights free from dirt, mud, or debris to ensure efficient heat dissipation.

IP68 WATERPROOF



1 Sealed PC Lens

2 Waterproof Rubber Pads and Strips

3 Waterproof Aluminum Housing

NAOEVO®

Other



VS



Image: Cross-section diagram illustrating the IP68 waterproof design, highlighting the sealed PC lens, waterproof rubber pads and strips, and waterproof aluminum housing that protect the internal components from water ingress.

TROUBLESHOOTING

If you encounter issues with your NAOEVO LED lights, refer to the following common problems and solutions:

Problem	Possible Cause	Solution
Lights do not turn on	No power, loose connection, blown fuse, faulty switch	Check power source, inspect all wiring connections, replace fuse, test switch functionality.
Lights flicker or dim	Insufficient power, loose connection, damaged wiring	Ensure adequate voltage supply, tighten connections, inspect wiring for damage and repair/replace as needed.
Moisture inside lens	Seal compromise, extreme temperature changes	Ensure proper installation of seals. If persistent, contact support. Small amounts of condensation may dissipate naturally.
Reduced light output	Dirty lens, LED degradation (unlikely within warranty)	Clean the lens thoroughly. If problem persists, contact support.

WARRANTY AND SUPPORT

NAOEVO provides a **1-year warranty** for this LED light bar kit. This warranty covers manufacturing defects and ensures reliable performance under normal use.

If you have any questions, require technical assistance, or need to make a warranty claim, please contact NAOEVO customer support through the retailer where you purchased the product or visit the official NAOEVO website for contact information.

For more information, you can visit the NAOEVO Store on Amazon.

