

Manuals+

[Q & A](#) | [Deep Search](#) | [Upload](#)

[manuals.plus](#) /

› [KitchenAid](#) /

› [KitchenAid Fully Automatic Espresso Machine KF7 User Manual](#)

KitchenAid KES8557SX

KitchenAid Fully Automatic Espresso Machine KF7 User Manual

MODEL: KES8557SX

INTRODUCTION

The KitchenAid Fully Automatic Espresso Machine KF7 (Model KES8557SX) is designed to bring the cafe experience directly to your home. This machine allows you to enjoy a variety of espresso beverages with the push of a button, offering personalized recipes based on strength, length, and temperature. Its robust metal-clad construction ensures durability and reliable performance for years to come.

SETUP

Unboxing and Initial Setup

Upon unboxing your new espresso machine, ensure all components are present: the main unit, removable bean hopper, 2.2 L water tank, milk tube, two cleaning tablets, and a filter. Follow the on-screen prompts for initial setup, including language selection and water filter installation. The intuitive 3.5" touchscreen will guide you through each step.



Image: Front view of the KitchenAid KF7 Fully Automatic Espresso Machine in Stainless Steel, showcasing its sleek design and ability to brew two beverages simultaneously.

Water Tank Installation

The 2.2 L water tank is located on the side of the machine. It is designed for easy removal and refilling. Simply pull the tank out, fill it with fresh water (and install the water filter if prompted), and slide it back into place. The machine features rollers on the bottom, allowing you to easily pull it forward for access if placed under cabinets.

KitchenAid®

Explore a New World of Espresso at Home

			
	Fully Automatic KF6	Fully Automatic KF7	Fully Automatic KF8
Metal-Clad Durable Construction	✓	✓	✓
Removable Bean Hopper	✓	✓	✓
Display	2.4" color	3.5" touchscreen	5" touchscreen
Pre-Set Recipe Options	15	20+	40+
User Profiles	4	4	6
Automatic Milk Frothing and Cleaning	✓	✓	✓
Included Milk Container		✓	✓
Dual Milk Delivery		✓	✓
Plant-Based Milk Options			✓
Quiet Mark Certified™	✓	✓	✓
Water Tank Capacity	2.2L	2.2L	2.2L

Image: The KitchenAid KF7 Espresso Machine shown next to a KitchenAid Stand Mixer, illustrating its compact dimensions (18.5"D x 10.2"W x 14.3"H).

Bean Hopper Installation

The removable bean hopper allows for easy exchange or refilling of fresh beans. To install, align the hopper with its slot on top of the machine and twist to lock it into place. This feature simplifies switching between different coffee roasts without mixing beans.

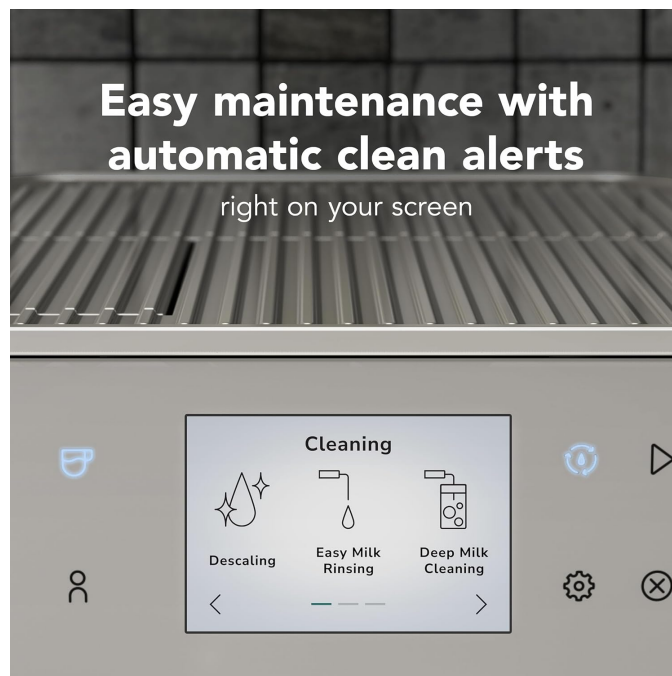


Image: A hand removing the removable bean hopper from the top of the espresso machine, demonstrating the ease of changing or refilling coffee beans.

Official Product Video: Setup Overview

Video: An official overview of the KitchenAid KF7 Fully Automatic Espresso Machine, highlighting its features and ease of use during initial setup.

OPERATING INSTRUCTIONS

Control Panel Overview

The machine features an intuitive 3.5" touchscreen display with capacitive buttons for easy navigation. You can scroll through various drink options like Caffè Latte, Espresso, Cappuccino, Americano, Macchiato, Flat White, Froth Milk, Warm Milk, and Hot Water. The display also shows alerts and cleaning prompts.



Image: The touchscreen display of the KitchenAid KF7, illustrating the wide selection of over 20 recipe options available for brewing.

Adjusting Brew Settings

For each drink, you can customize settings such as strength (number of espresso shots), temperature (Low, Medium, High), coffee volume, and milk volume. The machine also allows you to set the order of dispensing (e.g., Coffee First or Milk First). You can save your personalized preferences under individual user profiles for quick access.

Brewing Coffee and Espresso

Place your cup under the adjustable nozzle. Select your desired drink from the touchscreen. The machine's automatic smart dosing technology will grind the ideal volume and consistency of beans for your selection. The nozzle can be adjusted up or down to accommodate different cup sizes, minimizing splash-back.

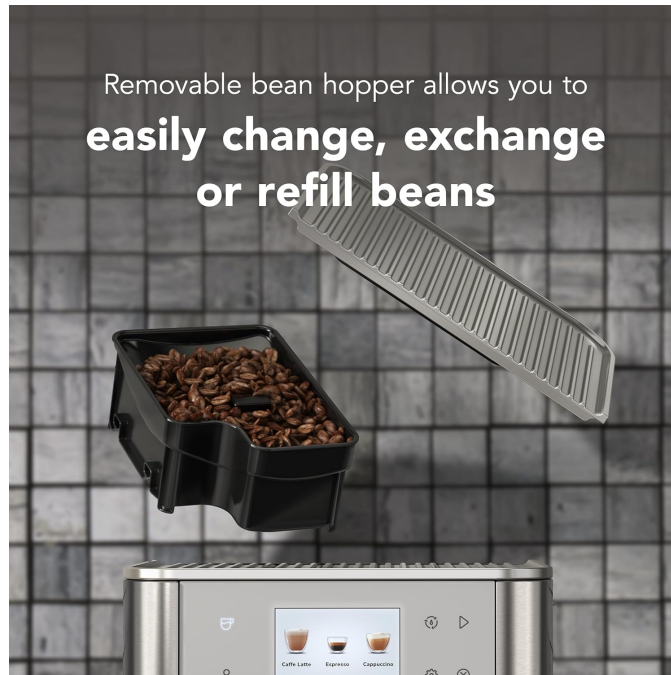


Image: The KitchenAid KF7 Espresso Machine in a kitchen setting, highlighting its durable metal-clad construction.

Using the Milk Attachment

The dual drink delivery system includes an automatic milk frothing and heating feature. Simply place the milk hose into a separate milk container of your choice (or the included milk tube) and select a milk-based drink. The machine will automatically steam and froth the exact amount of milk needed, delivering it directly into your cup.



MAINTENANCE AND CLEANING

Daily Cleaning

The machine provides easy maintenance with automatic clean alerts displayed directly on the screen. The drip tray and coffee puck container are removable for convenient cleaning. Simply slide out the tray, empty the coffee pucks, and rinse both components. It is recommended to rinse these parts regularly to maintain hygiene.



Easy Milk Rinsing

Automatic prompts make it easy to rinse your frother after every use, or whenever needed.



Deep Milk Cleaning

Help keep your milk system performing at its best with a deep cleaning cycle in a few simple steps.



Brew Unit Rinsing

Automatically rinses your brew unit whenever you need, or do it manually through settings.

Image: The touchscreen display of the KitchenAid KF7 showing various cleaning options: Descaling, Easy Milk Rinsing, and Deep Milk Cleaning.

Milk System Cleaning

The machine offers automatic prompts for easy milk rinsing after every use or whenever needed. For thorough cleaning, a deep milk cleaning cycle can be performed in a few simple steps to ensure your milk system performs at its best.

Not much bigger than your KitchenAid® Stand Mixer



14.3"

KES8557SX



13.5"

KSM195PSCU

Image: Detailed diagrams explaining Easy Milk Rinsing, Deep Milk Cleaning, and Brew Unit Rinsing procedures.

Brew Unit Cleaning

The brew unit automatically rinses when needed, or you can manually initiate rinsing through the settings. For deep cleaning, the brew unit can be removed from the side of the machine for thorough washing.

Descaling

The machine will prompt you when descaling is required. Follow the on-screen instructions for the descaling process to remove mineral buildup and maintain optimal performance.

TROUBLESHOOTING

Common Issues

If your espresso tastes weak, try adjusting the strength setting on the touchscreen or experimenting with different coffee beans. Ensure the water tank is filled and the water filter is properly installed. For milk frothing issues, perform the easy milk rinsing or deep milk cleaning cycles. The machine's display will provide alerts for maintenance needs.

Contact Support

For persistent issues not resolved by the manual or on-screen prompts, please refer to the full product manual or contact KitchenAid customer support for assistance.



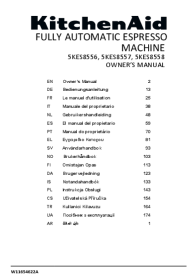


SPECIFICATIONS

Feature	Detail
Brand	KitchenAid
Model Name	KES8557SX (KF7)
Product Dimensions	18.5"D x 10.2"W x 14.3"H
Item Weight	40.3 pounds
Coffee Maker Type	Espresso Machine
Operation Mode	Fully Automatic
Coffee Input Type	Whole Bean
Special Features	Auto Shut-Off, Integrated Coffee Grinder, Removable Tank, Auto Clean Function, Programmable
Included Components	(1) bean hopper (removable), (1) 2.2 L water tank, (1) milk tube, (2) cleaning tablets (brew unit), Filter
Human Interface Input	Touchscreen, Buttons
Country of Origin	Switzerland

WARRANTY AND SUPPORT

Your KitchenAid Fully Automatic Espresso Machine KF7 comes with a manufacturer's warranty. For detailed warranty information, product registration, or technical support, please visit the official KitchenAid website or contact their customer service department. Keep your purchase receipt for warranty claims.

Related Documents - KES8557SX

	<p>KitchenAid Espresso Machine Quick Start Guide</p> <p>A quick start guide for KitchenAid espresso machines, covering setup, first use, milk-based drink preparation, bean hopper functions, and care and cleaning.</p>
	<p>KitchenAid Espresso Machine Quick Start Guide</p> <p>A concise guide to setting up, customizing, and maintaining your KitchenAid fully-automatic espresso machine, including essential care and cleaning instructions.</p>
	<p>KitchenAid Fully Automatic Espresso Machine Owner's Manual</p> <p>Discover how to use and maintain your KitchenAid Fully Automatic Espresso Machine (models 5KES8556, 5KES8557, 5KES8558) with this comprehensive owner's manual. Learn about safety features, brewing instructions, cleaning procedures, and warranty information from KitchenAid.</p>
	<p>KitchenAid KF8 Espresso Machine Quick Start Guide</p> <p>A comprehensive quick start guide for the KitchenAid KF8 Fully Automatic Espresso Machine, covering initial setup, brewing milk-based drinks, drink customization, bean hopper functions, and essential care and cleaning procedures.</p>
	<p>KitchenAid KES6404 & KES6504 Espresso Machine Owner's Manual</p> <p>Your guide to the KitchenAid KES6404 and KES6504 Espresso Machine and Milk Frother Attachment, covering setup, operation, safety, care, and troubleshooting for optimal coffee brewing.</p>

KitchenAid®
KES6404, KES6504



[KitchenAid KES6404/KES6504 Espresso Machine User Manual](#)

This user manual provides essential information for operating, cleaning, and maintaining your KitchenAid KES6404 and KES6504 espresso machine and milk frother attachment.