



Manuals.plus /

› Sunweyer /

› Sunweyer Wireless CarPlay & Android Auto Adapter (USB-A Port) User Manual

## Sunweyer USB-A Port

# Sunweyer Wireless CarPlay & Android Auto Adapter (USB-A Port) User Manual

Model: USB-A Port

## 1. INTRODUCTION

---

This manual provides detailed instructions for the Sunweyer Wireless CarPlay & Android Auto Adapter (USB-A Port). This device converts your car's existing wired CarPlay or Android Auto system into a wireless connection, allowing for seamless integration of your smartphone's features with your vehicle's infotainment system.



Image 1.1: The Sunweyer Wireless CarPlay & Android Auto Adapter, showing its compact design and included USB-C adapter.

## 2. COMPATIBILITY

The Sunweyer Wireless CarPlay & Android Auto Adapter is designed for vehicles equipped with factory-installed wired CarPlay or Android Auto systems.

- **Works With:** Factory-installed wired CarPlay/Android Auto systems.
- **Not Compatible With:** BMW, Tesla, or aftermarket stereos.
- **Smartphone Compatibility:**
  - Compatible with iOS 12 and above for CarPlay.
  - Compatible with Android 11 and above for Android Auto.



Image 2.1: Visual representation of car and phone compatibility for the adapter.

### 3. PRODUCT FEATURES AND DESIGN

---

The Sunweyer adapter offers a compact design and efficient performance for an enhanced in-car experience.

- **2-in-1 Wireless Functionality:** Converts wired CarPlay and Android Auto to wireless.
- **Compact Design:** Small and lightweight, measuring approximately 2.09 x 0.98 x 0.47 inches (5.3 x 2.5 x 1.2 cm).
- **Swift Data Transmission:** Utilizes 5.8 GHz WiFi for stable and fast connectivity.
- **Plug & Play:** No additional drivers or complex software installations required.
- **Automatic Connection:** After initial pairing, the device automatically connects upon car startup.
- **Original Control Retention:** Supports existing touch screen, OEM knob, and steering wheel controls.

# Keep Original Control

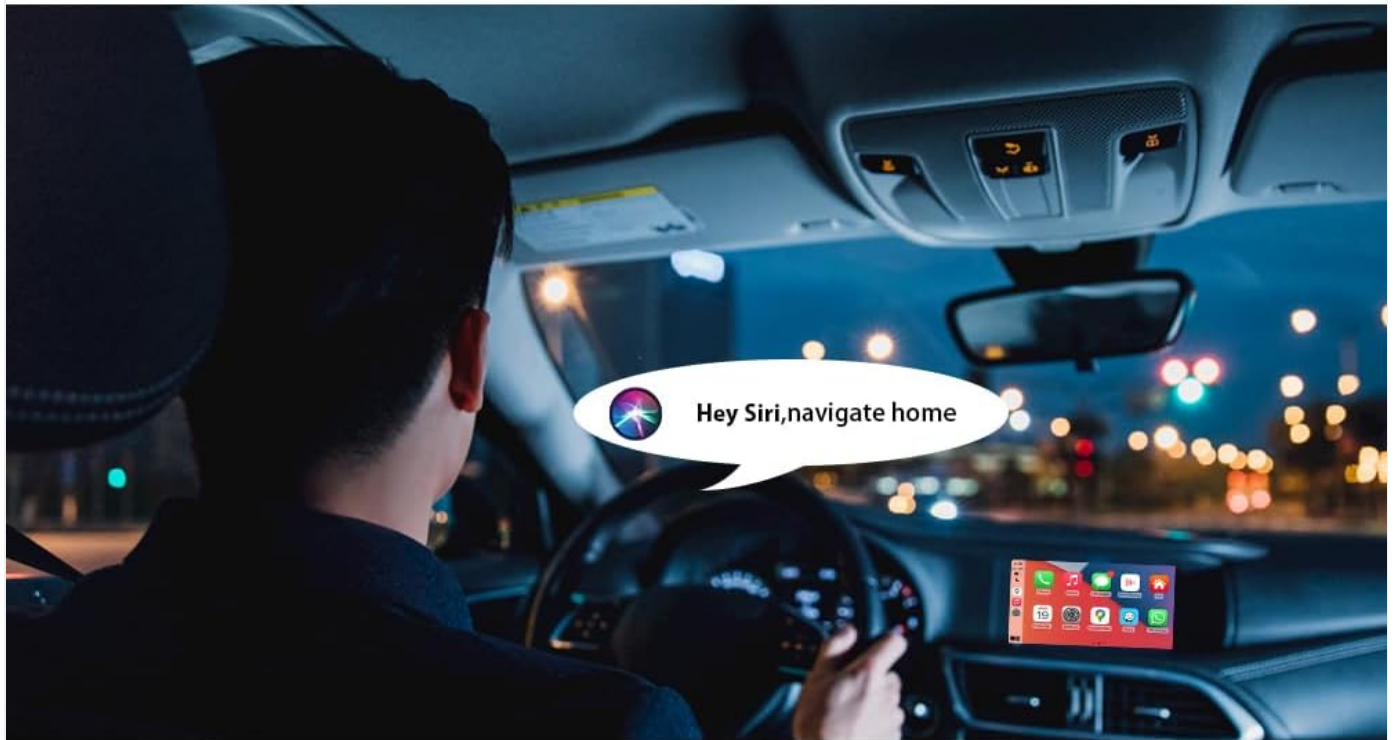


Image 3.1: The compact size of the Sunweyer adapter, approximately 2.05 inches in length.

# Small Size Big Purpose

The length is only 2.05 inches, making it more convenient for you to carry and plug and play anytime.



Image 3.2: Example of CarPlay and Android Auto interfaces displayed on a car's infotainment screen.

## 4. SETUP AND INSTALLATION

Follow these steps to install and set up your Sunweyer Wireless CarPlay & Android Auto Adapter:

1. **Plug In:** Insert the Sunweyer adapter into your car's USB-A port that supports wired CarPlay or Android Auto. If your car has a USB-C port, use the included USB-C adapter.
2. **Bluetooth Pairing:** On your smartphone, enable Bluetooth and search for available devices. Select "Sunweyer Dongle" from the list and pair your phone.
3. **Connect to CarPlay/Android Auto:** Once paired via Bluetooth, your phone will prompt you to use CarPlay or Android Auto. Confirm the connection. The adapter will then establish a Wi-Fi connection for data transmission.

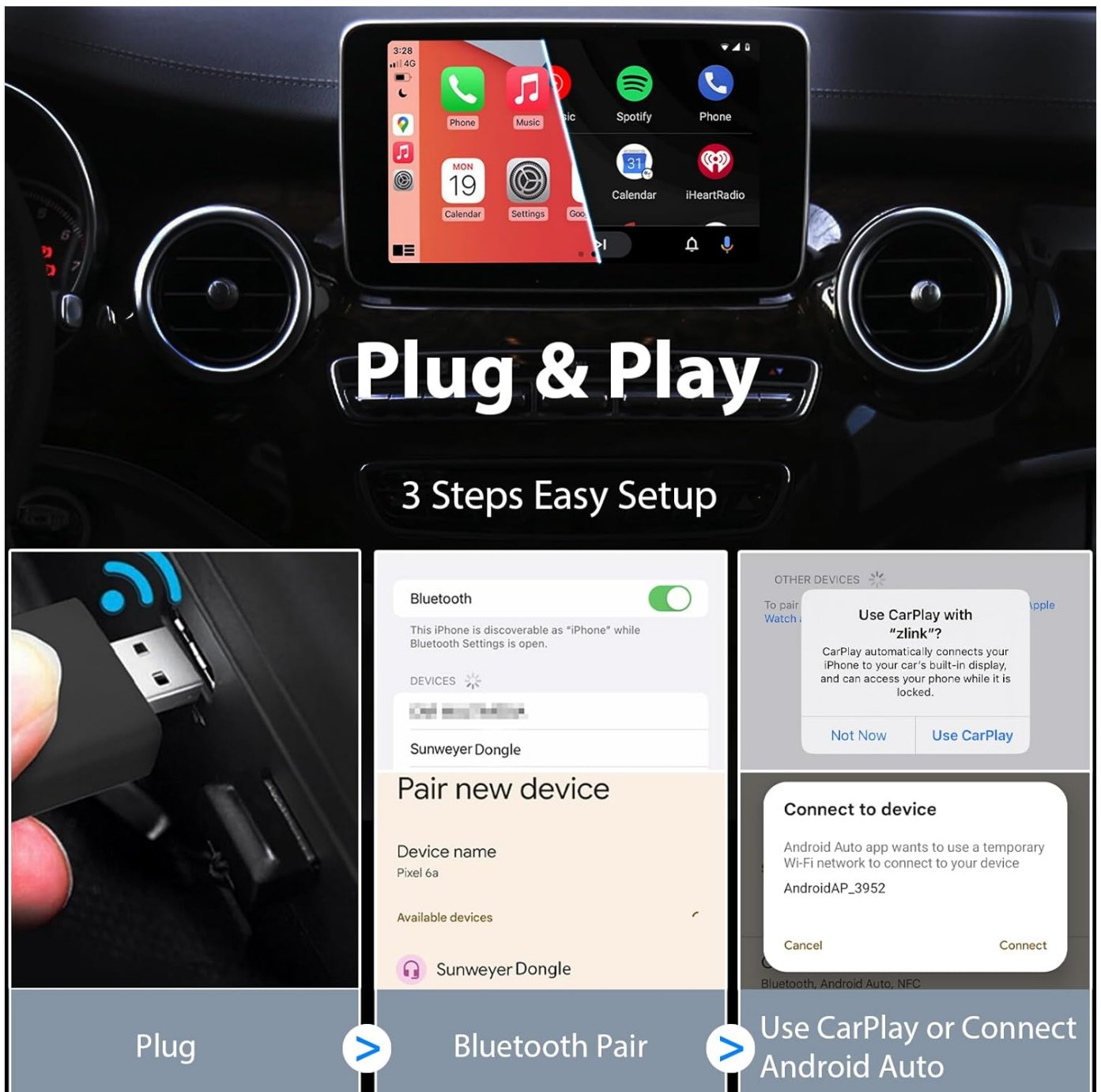


Image 4.1: Visual guide for the 3-step setup process: Plug, Bluetooth Pair, and Connect.

## 5. OPERATING INSTRUCTIONS

After the initial setup, the adapter is designed for automatic and seamless operation.

- **Automatic Connection:** Once paired, the adapter will automatically connect to your smartphone and activate CarPlay or Android Auto wirelessly each time you start your car. This process typically takes 5-10 seconds.
- **Using Car Features:** You can use your car's existing controls, including the touch screen, OEM knob, and steering wheel buttons, to navigate CarPlay or Android Auto. Voice commands (Siri or Google Assistant) are also supported.
- **Applications:** Access your favorite navigation, music, messaging, and communication apps directly on your car's display.

# Auto Connect

After the first Bluetooth pairing, CarPlay or Android Auto can be automatically connected upon starting the car.



Image 5.1: Illustration of using voice commands (e.g., Siri) to control navigation and other functions.

## 3 Steps to Connect



Plug in Car



Turn on the wifi, Bluetooth Pair



Use CarPlay / Android Auto

Image 5.2: Depiction of the adapter automatically connecting to the car's system upon startup.

## 6. TROUBLESHOOTING

---

If you encounter issues with your Sunweyer Wireless CarPlay & Android Auto Adapter, consider the following solutions:

- **Connection Issues:** If the adapter fails to connect automatically, try unplugging it and plugging it back in. Ensure your phone's Bluetooth and Wi-Fi are enabled.
- **Lag or Disconnections:** Ensure your car's wired CarPlay/Android Auto system is functioning correctly. Check for any obstructions that might interfere with the wireless signal.
- **Firmware Updates:** Keeping the adapter's firmware updated can resolve many issues and improve performance.
- **Navigation App Crashes:** If navigation apps crash, try restarting the adapter by unplugging and re-plugging it.

### Firmware Update and Connectivity Guides:

#### Upgrade using an Android phone

Video 6.1: Instructions on how to update the adapter's firmware using an Android smartphone.

#### Upgrade using an iPhone

Video 6.2: Instructions on how to update the adapter's firmware using an iPhone.

#### How to change the Wi-Fi frequency band

Video 6.3: Guide on adjusting the Wi-Fi frequency band for optimal performance.

#### Clear Bluetooth and Wi-Fi connection history on your phone

Video 6.4: Instructions on how to clear old Bluetooth and Wi-Fi connection data from your smartphone.

## 7. SPECIFICATIONS

---

<b>Product Dimensions</b>	2.09 x 0.98 x 0.47 inches (5.3 x 2.5 x 1.2 cm)
<b>Item Weight</b>	1.06 ounces (30 grams)
<b>Connectivity Technology</b>	Bluetooth, Wi-Fi (5.8 GHz)
<b>Special Feature</b>	Built-in Bluetooth
<b>Model Number</b>	USB-A Port
<b>Manufacturer</b>	Sunweyer

## 8. SUPPORT

---

For any inquiries or assistance, Sunweyer provides 24/7 customer service. Please refer to the product packaging or the official Sunweyer website for contact information.

