

Dayago BF-Q-006

Dayago Floating Bed Frame Queen Size with Smart LED Lights and Charging Station Instruction Manual

Model: BF-Q-006

1. INTRODUCTION

This manual provides detailed instructions for the assembly, operation, and maintenance of your Dayago Floating Bed Frame. Designed for a Queen size mattress, this metal platform bed features integrated smart LED lighting and a convenient charging station. Please read all instructions carefully before beginning assembly and retain this manual for future reference.

2. IMPORTANT SAFETY INFORMATION

- Ensure proper assembly for stability. All connections must be securely tightened.
- Do not exceed the maximum weight capacity of 1000 lbs.
- Be mindful of the under-bed LED lights and their wiring during cleaning or moving the bed.
- Keep the charging station out of reach of small children to prevent electrical hazards.
- Avoid placing liquids directly on or near the charging station.
- Regularly inspect all components for wear or damage. Discontinue use if any part is compromised.

3. PACKAGE CONTENTS

Verify that all components are present before beginning assembly. If any parts are missing or damaged, please contact customer service.

- Metal Bed Frame Components (numbered for easy identification)
- Hardware Pack (screws, bolts, washers, Allen wrench)
- Smart LED Lights Strip (14.7 ft / 4.5m)
- LED Remote Control
- Built-in Charging Station (2 AC outlets, 2 USB ports, 1 Type-C port)
- Power Cord (16.4 ft)

- Adhesive Buckles and Zip Ties for LED strip management
- Installation Manual

4. ASSEMBLY INSTRUCTIONS

Assembly is designed to be straightforward. Each frame component is numbered to correspond with the steps in the manual. It is recommended to assemble the bed frame in the room where it will be used.

4.1. Frame Assembly

1. Unpack all components and lay them out on a clean, soft surface to prevent scratches.
2. Identify all numbered parts of the metal frame.
3. Follow the step-by-step diagrams in the included installation manual to connect the frame sections using the provided hardware. Ensure all bolts are finger-tightened initially.
4. Once all sections are connected, use the Allen wrench to fully tighten all bolts. Do not overtighten.



Figure 4.1: Overview of the metal bed frame structure, highlighting its dimensions (79"L x 60"W x 7.8"H for Queen size) and a weight capacity of 1000 lbs. The image also shows the LED light strip and charging station components.

Convenient Power Outlet

All-in-one power outlets
reduces wire clutter




2 Standard
Plug Outlets


2 USB
Ports


1 Type-c
ports



Power Cord 16.4ft



Figure 4.2: Close-up of the robust metal frame structure, illustrating the 11 reliable metal slats and 9 thick support legs designed for stability and durability.

4.2. LED Light Strip Installation

1. Locate the LED light strip. It is designed to be installed along the underside of the bed frame.
2. Use the provided adhesive buckles and zip ties to secure the LED light strip firmly to the metal frame. This ensures the lights remain in place and do not fall off.
3. Connect the LED light strip to its power source, typically integrated with the charging station or a separate adapter.

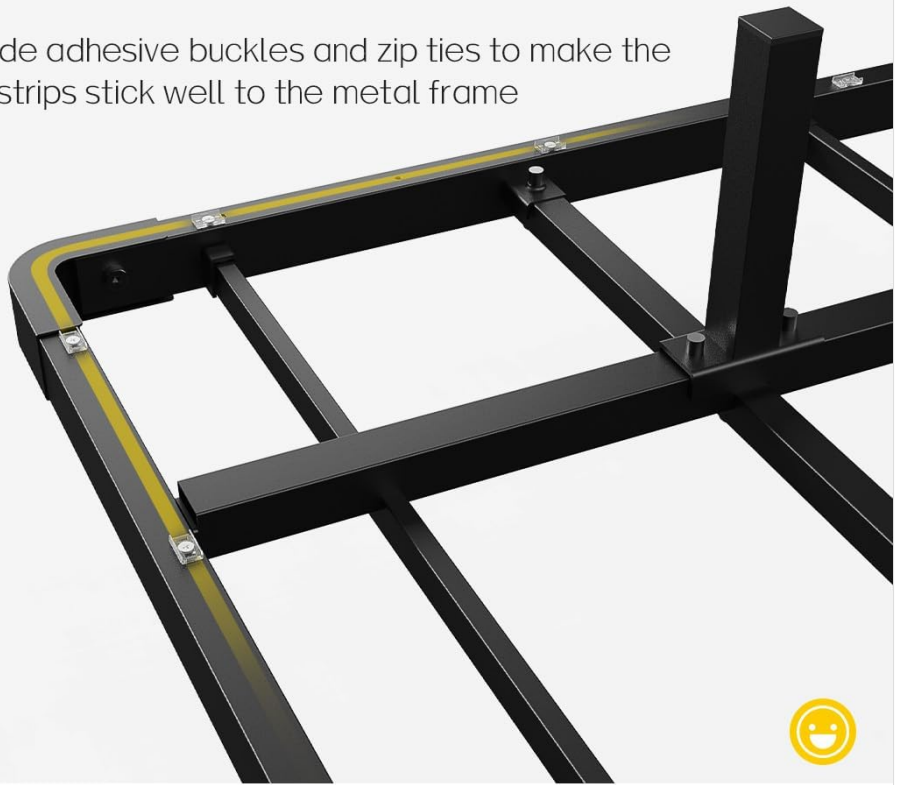
Dayago:

Provide adhesive buckles and zip ties to make the light strips stick well to the metal frame

1 adhesive buckles



2 zip ties



Others:

Only provide the sticky clips, which does not stay on



Figure 4.3: Visual guide demonstrating how to properly attach the LED light strips to the bed frame using both adhesive buckles and zip ties for a secure and lasting installation.



Rock-Solid Foundation

Built with **11** reliable metal slats and **9** thick legs that can support up to **1000lbs**



Rounded and Smooth Edges

Figure 4.4: Detailed view of the adhesive buckles and zip ties, illustrating their use in securing the LED light strip to the bed frame for a neat and durable setup.

4.3. Charging Station Integration

1. The charging station is pre-installed into a frame component.
2. Ensure the charging station's power cord is accessible and can reach a wall outlet.

4.4. Final Placement

Once assembled, place your mattress directly onto the bed frame. No box spring is needed.



Figure 4.5: The Dayago Floating Bed Frame fully assembled with a mattress, showcasing the under-bed LED lighting and a tablet charging via the integrated station.

Video 4.1: A seller-provided video demonstrating the assembly process and key features of the Dayago Floating Bed Frame, including the LED lights and charging station.

5. OPERATING INSTRUCTIONS

5.1. Smart LED Lights

The under-bed LED lights can be controlled using the included remote control.

- **Power On/Off:** Use the power button on the remote to turn the lights on or off.
- **Color Selection:** Choose from over 12 colors using the color palette buttons on the remote.
- **Brightness Adjustment:** Adjust the light intensity using the brightness control buttons.
- **Light Patterns:** Select various dynamic light patterns or modes as desired.



Figure 5.1: The Dayago Floating Bed Frame illuminated by its LED lights, with the remote control visible, demonstrating the customizable lighting options.

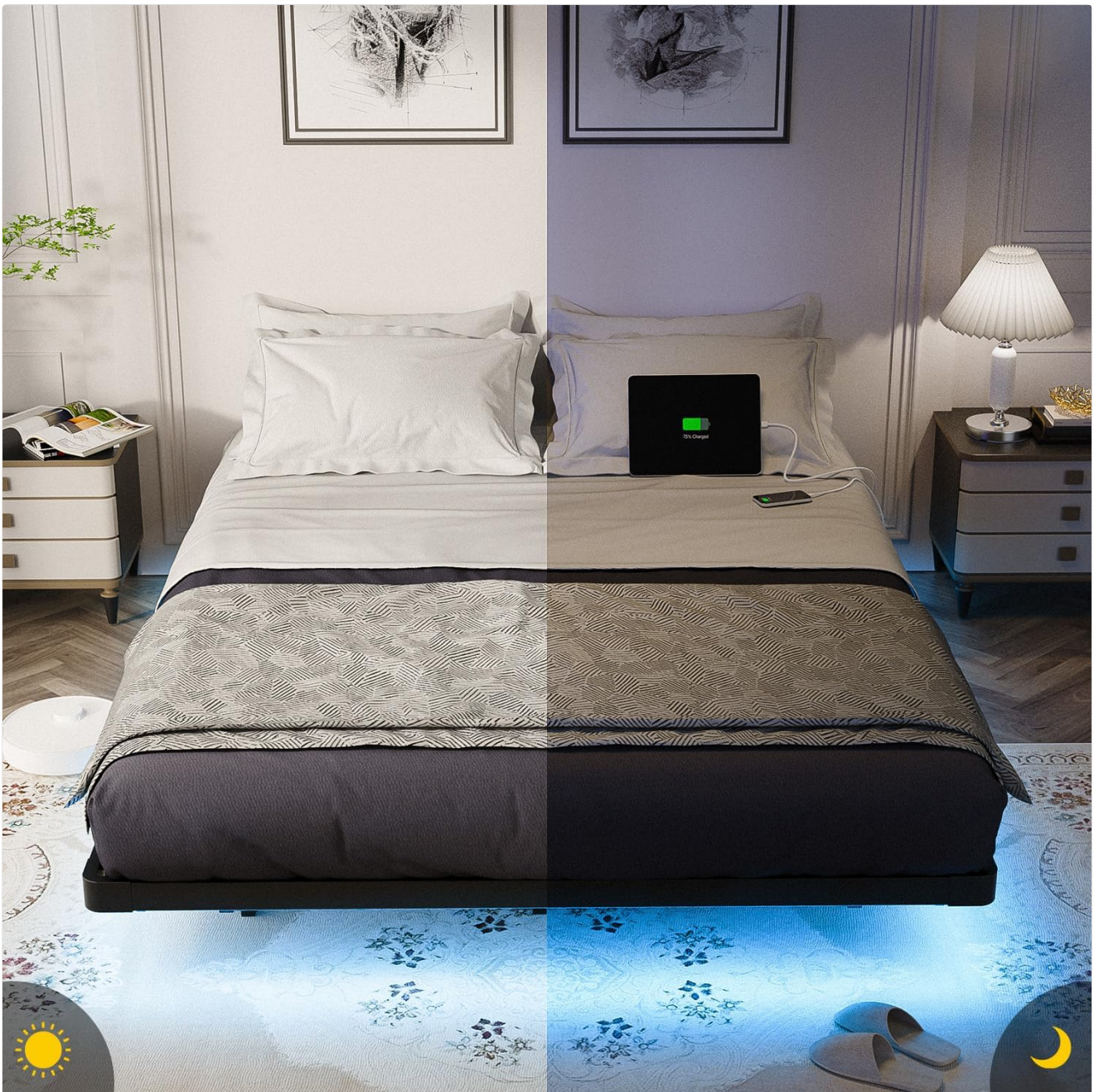


Figure 5.2: A visual comparison of the Dayago Floating Bed Frame's appearance during the day and at night, highlighting how the LED lights enrich the nighttime ambiance.

5.2. Charging Station

The integrated charging station provides convenient power access for your electronic devices.

- Plug the bed frame's main power cord into a wall outlet.
- Use the 2 AC outlets for standard plugs.
- Utilize the 2 USB ports and 1 Type-C port for charging compatible devices such as phones, tablets, and smartwatches.



UL Certified



2 Standard Plug Outlets



2 USB Ports



1 Type-c ports

Figure 5.3: Detailed view of the UL Certified built-in charging station, featuring two standard AC outlets, two USB ports, and one Type-C port for convenient device charging.

LED Lights to Enrich Night Atmosphere



Figure 5.4: An illustration of the convenient power outlet in use, showing a tablet and phone being charged directly from the bed frame, reducing cable clutter.

Video 5.1: A short seller video showcasing the LED lights and charging station features of the Dayago floating bed frame.

6. MAINTENANCE

- **Cleaning:** Wipe the metal frame with a soft, damp cloth. Avoid harsh chemicals or abrasive cleaners that could damage the finish.
- **LED Lights:** Ensure the LED strips are free from dust and debris. If cleaning is necessary, gently wipe with a dry, soft cloth.
- **Connections:** Periodically check all bolts and screws to ensure they remain tight. Re-tighten if necessary.
- **Charging Station:** Keep the charging ports clean and free of obstructions.

7. TROUBLESHOOTING

- **LED Lights Not Working:**
 - Check if the power cord for the bed frame is securely plugged into a working wall outlet.
 - Ensure the LED strip is properly connected to its power source.
 - Verify the remote control batteries are functional and correctly inserted.
- **LED Lights Not Sticking:**
 - Ensure the frame surface is clean and dry before applying adhesive buckles.
 - Utilize the provided zip ties in conjunction with the adhesive buckles for enhanced security, especially in areas prone to movement.
- **Charging Station Not Functioning:**
 - Confirm the bed frame's main power cord is plugged into a live outlet.
 - Test with a different device or cable to rule out device-specific issues.

- **Bed Frame Squeaks:**

- Re-tighten all assembly bolts and screws. Loose connections are a common cause of squeaking.
- Ensure the mattress is properly seated on the slats.

8. PRODUCT SPECIFICATIONS

Feature	Detail
Size	Queen
Product Dimensions	80"L x 60.2"W x 7.7"H
Material	Metal
Color	Black
Weight Capacity	1000 lbs
Support Legs	9
LED Light Strip Length	14.7 ft / 4.5m
Charging Station	2 AC Outlets, 2 USB Ports, 1 Type-C Port
Assembly Required	Yes
Box Spring Needed	No

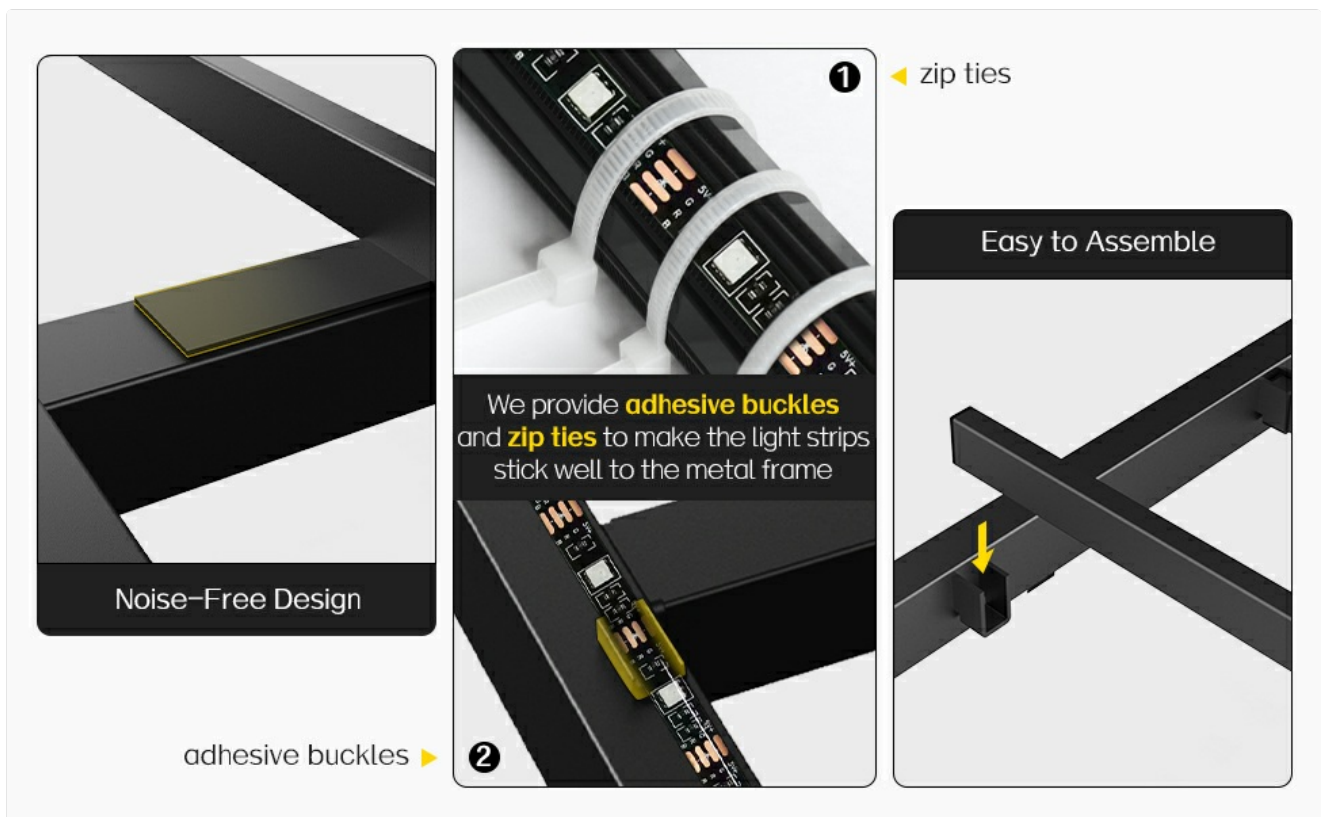


Figure 8.1: A summary table detailing the key specifications of the Dayago Queen Floating Bed Frame, including size, dimensions, material, and features.

9. WARRANTY AND SUPPORT

Dayago is committed to providing quality products and reliable service. If you encounter any issues such as damage, scratches, or missing parts, please contact our responsive after-sales service. We are committed to addressing your concerns within 24 hours.

For support, please refer to the contact information provided with your purchase documentation or visit the official Dayago store on Amazon.