

TRIMIX-RF04A

Wireless Replacement Remote Control for Dreameasy TRIMIX-RF04A Adjustable Bed Base

Instruction Manual

IMPORTANT COMPATIBILITY NOTES

This replacement remote control is specifically designed for use with **Dreameasy TRIMIX-RF04A** adjustable bed bases. It is crucial to verify compatibility before use.

- This remote control is only compatible with control boxes manufactured with the model number **L04Y**. It is **not** compatible with OKIN control boxes.
- Before purchasing or attempting to pair, please locate and check the model number on your bed's control box.
- Ensure your old remote control is identical in appearance and button layout to this replacement remote.
- If you are uncertain about compatibility, please provide detailed information about your bed, control box, and old remote control to your supplier for verification.

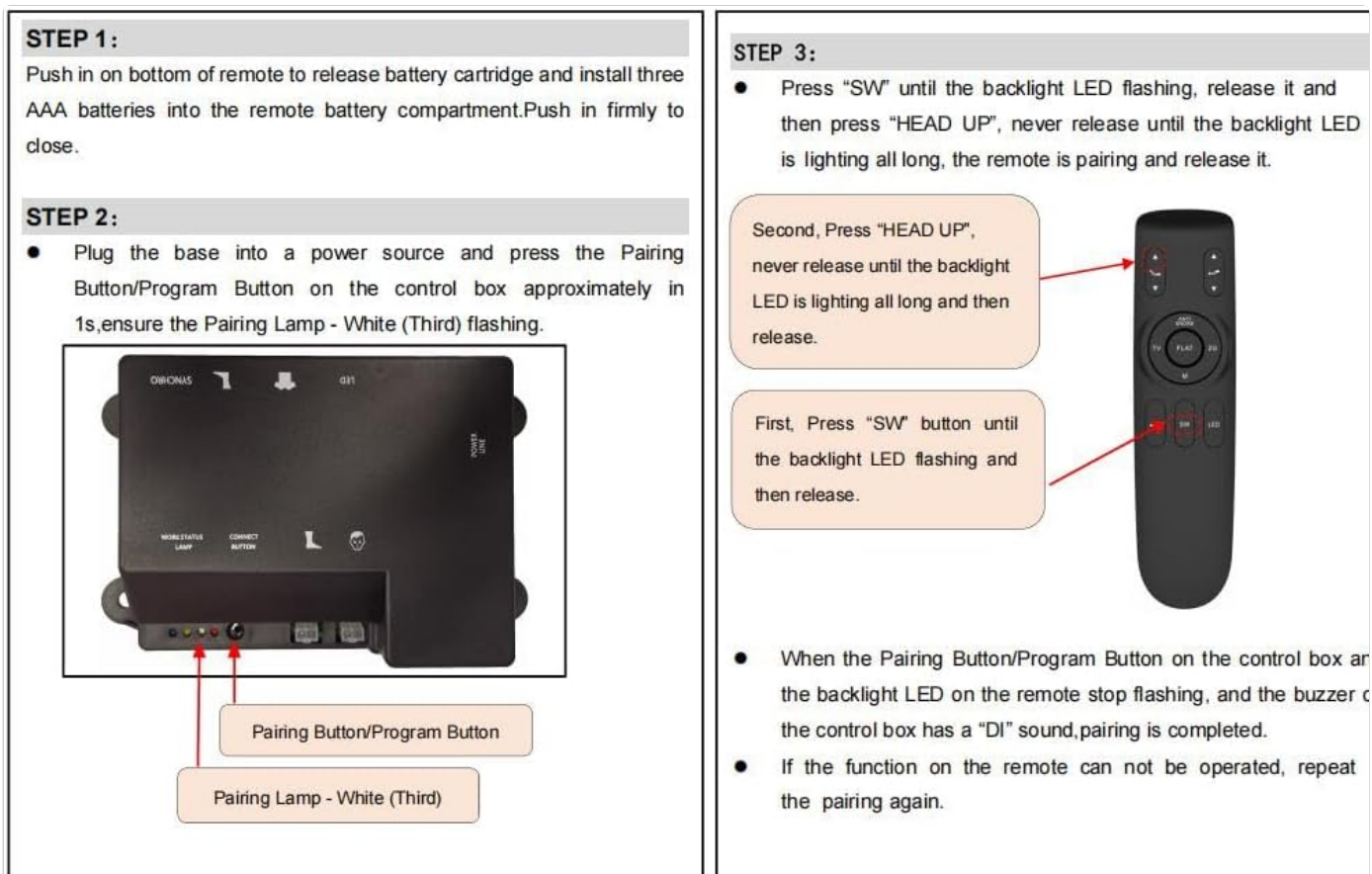


Figure 1: Visual guide for identifying the correct control box and remote. Note the "MODEL JLDP 03" and "ML150" labels on the control boxes, and the remote's battery compartment.

SETUP AND PAIRING INSTRUCTIONS

Follow these steps to install batteries and pair your new remote control with your adjustable bed base.

1. Battery Installation

1. Push in on the bottom of the remote control to release the battery cartridge.
2. Install three AAA batteries into the battery compartment, ensuring correct polarity.
3. Push the battery cartridge firmly back into the remote until it clicks into place.
4. Ensure the remote batteries are functioning. Replace if necessary.

2. Pairing the Remote Control

Before starting, ensure the power cord for your adjustable bed base is securely plugged into a powered electrical outlet.

1. Plug the bed base into a power source.
2. Locate the Pairing Button/Program Button on the control box. This is typically a small blue button on the control box cord or directly on the box itself.
3. Press and hold the **HEAD UP** button and the **SW** button simultaneously on the remote control.
4. While still holding the **HEAD UP** and **SW** buttons, also press and hold the blue Pairing Button on the control box cord.
5. Continue holding all three buttons until you hear two beeps from the control box. The remote is now paired.
6. If the pairing lamp (often white or blue) on the control box flashes, and the backlight LED on the remote stops flashing and remains lit, and you hear two beeps, pairing is complete.

Important Note:

Before placing your order please provide us with clear pictures of your control box and old remote (front & back) in order to match the correct remote to your bed, like this:

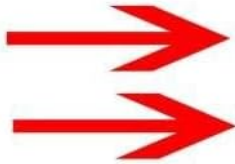


Figure 2: Detailed steps for battery installation and remote pairing with the control box.

OPERATING THE REMOTE CONTROL

Once paired, your remote control allows you to adjust your Dreameasy TRIMIX-RF04A adjustable bed base. The remote features various buttons for different functions:

- **HEAD UP/DOWN:** Adjusts the head section of the bed.
- **FOOT UP/DOWN:** Adjusts the foot section of the bed.
- **FLAT:** Returns the bed to a flat position.
- **ANTI SNORE:** Activates the anti-snore position.
- **TV:** Activates a pre-set TV viewing position.
- **M (Memory):** Saves a custom position.
- **ZG (Zero Gravity):** Activates the zero gravity position.
- **SW (Switch/Program):** Used during the pairing process.
- **LED:** Controls any integrated LED lighting on the bed base (if applicable).



Figure 3: Overview of the remote control buttons and their functions.

MAINTENANCE

- **Battery Replacement:** Replace batteries promptly when the remote's performance degrades. Refer to the "Battery Installation" section for instructions.
- **Cleaning:** Wipe the remote control with a soft, dry cloth. Do not use liquid cleaners or abrasive materials.
- **Storage:** Store the remote in a dry place, away from extreme temperatures and direct sunlight.

TROUBLESHOOTING

If you encounter issues with your remote control, please refer to the following common solutions:

- **Remote Not Responding:**
 - Check if the batteries are correctly installed and have sufficient charge. Replace if necessary.
 - Ensure the bed base is properly plugged into a working power outlet.
 - Verify that the remote is pointed towards the bed base's receiver (if applicable) and there are no obstructions.
- **Remote Not Pairing:**
 - Re-attempt the pairing process carefully, following all steps in the "Pairing the Remote Control" section.
 - Confirm that your control box model number is indeed L04Y. This remote is not compatible with other models.

- Ensure the power to the bed base was cycled (unplugged and plugged back in) before attempting to pair.

- **Intermittent Functionality:**

- Weak batteries can cause intermittent operation. Replace them.
- If functions are still not operating correctly, repeat the pairing process.

SPECIFICATIONS

Brand	Generic
Model Number	TRIMIX-RF04A
Compatible Control Box	L04Y (Not compatible with OKIN boxes)
Compatible Devices	Adjustable Bed Base
Connectivity Technology	Infrared
Max Supported Devices	1
Batteries Required	2 AAA batteries (not included)
Maximum Range	8 Meters
Color	Black
Manufacturer	SZHKHXD

WARRANTY INFORMATION

This product comes with a **90-day warranty** from the date of purchase. This warranty covers manufacturing defects under normal use. Please retain your proof of purchase for any warranty claims.

SUPPORT

For further assistance, troubleshooting, or inquiries regarding your Wireless Replacement Remote Control, please contact your original seller or the manufacturer, SZHKHXD. When contacting support, please have your product model number (TRIMIX-RF04A) and control box model number (L04Y) available.

