

Resiners R-072E

Resiners Dual-Head Resin Mixer User Manual

Model: R-072E

		Introduction		What's in the		
Box	Setup	Operation	Maintenance	Troubleshooting	Specifications	Warranty & Support

1. INTRODUCTION

This manual provides comprehensive instructions for the setup, operation, and maintenance of your Resiners Dual-Head Resin Mixer (Model R-072E). Designed for efficiency and ease of use, this electric stirrer is ideal for mixing resin, silicone, paint, and other craft materials with minimal bubbles. Please read this manual carefully before use to ensure proper and safe operation.



Figure 1: Resiners Dual-Head Resin Mixer Overview

2. WHAT'S IN THE BOX

Upon opening your Resiners Dual-Head Resin Mixer package, you should find the following components:

- Dual-Head Electric Mixer Unit
- 4 x Silicone Paddles (2 long, 2 short)
- 1 x Silicone Mat
- 1 x Type-C Charging Cable
- 1 x User Manual
- Screws and Mini Screwdriver (for assembly)



Figure 2: Package Contents

3. SETUP INSTRUCTIONS

Follow these steps to assemble your Resiners Dual-Head Resin Mixer:

1. **Attach the Main Unit to the Base:** Insert the two aluminum support tubes from the main mixer unit into the corresponding holes on the base. Ensure they are securely seated.
2. **Secure the Base:** Flip the unit over and use the provided screws and screwdriver to fasten the main unit to the base from underneath.
3. **Insert Silicone Paddles:** Attach the desired long or short spiral silicone paddles to the mixing shafts by aligning and pushing them firmly into place.
4. **Place Silicone Mat:** Position the silicone mat onto the base, aligning it with the mixing areas. This mat helps keep your workspace clean and provides stability for mixing cups.

Setup Video Guide

Your browser does not support the video tag.

4. OPERATING INSTRUCTIONS

The Resiners Dual-Head Resin Mixer is designed for efficient and hands-free mixing:

- **Hands-Free Operation:** Simply place your mixing cups on the designated spots on the silicone mat. Rotate the control knobs to start automatic stirring, freeing your hands and preventing wrist strain.
- **Stepless Speed Control:** Each mixing head features independent stepless speed control, allowing you to adjust the rotation from 0 to 300 RPM. This enables precise mixing for various resin capacities and viscosities, ensuring minimal bubbles and uniform results.
- **Powerful Dual Motors:** Equipped with two independent motors, the mixer provides strong torque (up to 800g.cm) to handle even highly viscous resins without losing power.
- **Wireless Use:** The built-in 2600mAh large-capacity battery allows for up to 4 hours of continuous wireless operation after a full charge. The LED indicator lights will flash during charging and remain solid when fully charged.



Figure 3: Hands-Free Mixing

Double Efficiency

2X Faster

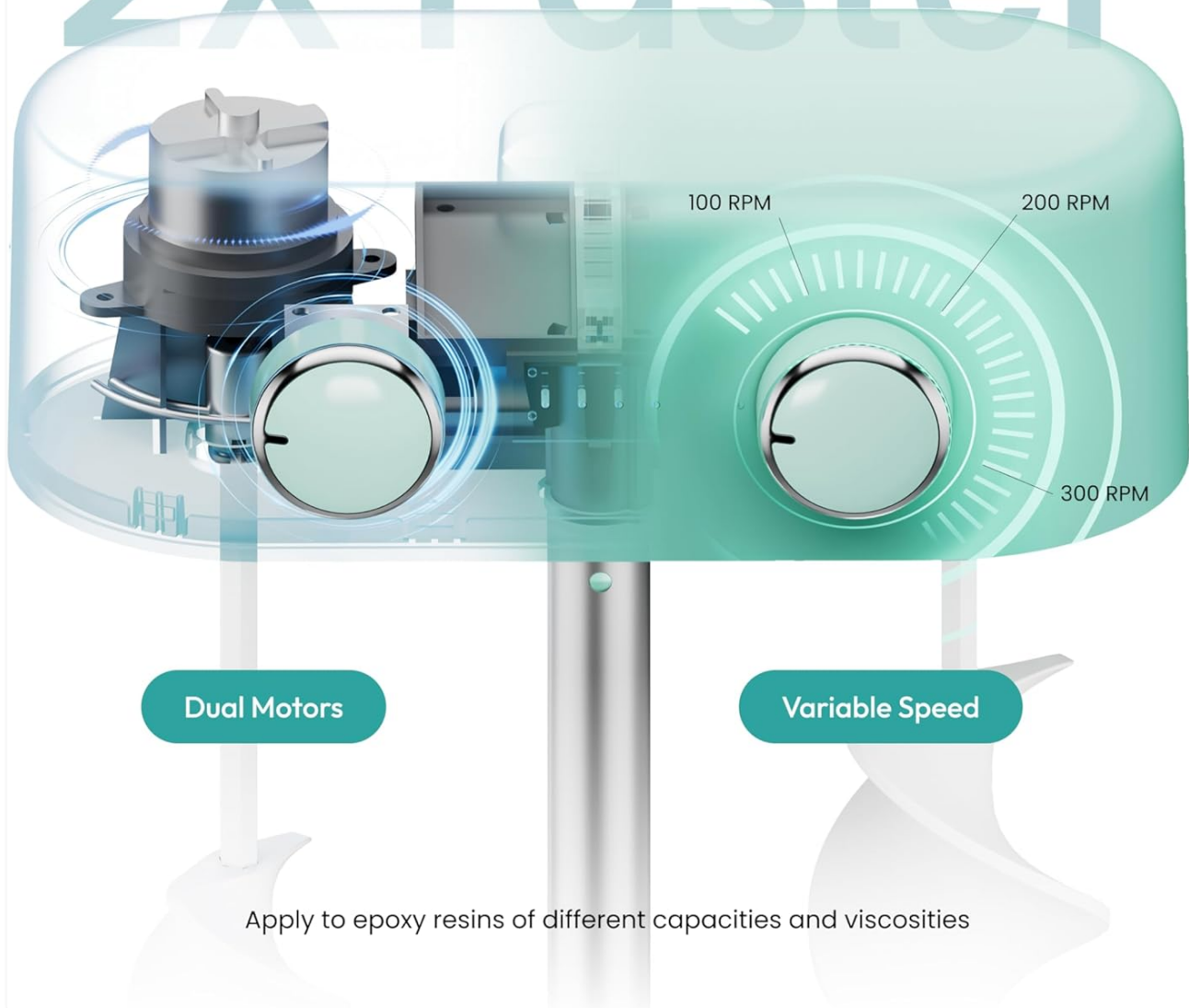


Figure 4: Dual Motors & Stepless Speed

Wireless Use

2600mAh for 4 Hours of Continuous Use



Figure 5: Wireless Operation

Resiners Resin Mixer



- ✓ 30s-60s
- ✓ minimum bubbles
- ✓ mixing evenly
- ✓ hands free & easy to clean

Traditional Hand Mixer



- ✗ 90s-180s
- ✗ produce bubbles
- ✗ mixing unevenly
- ✗ wrist soreness

Figure 6: Minimal Bubbles Mixing

5. MAINTENANCE

Proper maintenance ensures the longevity and optimal performance of your mixer:

- **Cleaning Paddles:** After each use, simply wipe the silicone mixing paddles with a damp cloth to clean off any liquid resin. For hardened resin, the silicone material allows you to easily peel off large pieces. Remove any residual fragments with resin tape if necessary.
- **Cleaning Base:** The silicone mat on the base can be easily wiped clean with a damp cloth.
- **Adding Additives:** If adding ink, dye, or mica powder, always drop them in the center of the resin cup to ensure even distribution during mixing.

Gen-4 Silicone Paddles



Liquid Resin :
Wipe with baby wipes



Hardened Resin :
① Peel off the large pieces
② Remove residual fragments with resin tape

Boost your efficiency with high-performance

Figure 7: Easy Cleaning of Silicone Paddles

6. TROUBLESHOOTING

If you encounter any problems during the use of your Resiners Dual-Head Resin Mixer, please refer to the following general advice:

- **Unit Not Turning On:** Ensure the unit is fully charged using the provided Type-C cable. Check the LED indicator lights for battery status.
- **Paddles Not Rotating:** Verify that the paddles are correctly inserted and securely attached to the mixing shafts. Ensure the speed control knobs are rotated past the 'off' position.
- **Excessive Bubbles:** Adjust the mixing speed to a lower RPM. Slower mixing speeds generally produce fewer bubbles. Ensure resin components are at room temperature.
- **Uneven Mixing:** Ensure the mixing cups are centered on the silicone mat. For best results, follow recommended mixing times for your specific resin type.

For any persistent issues or further assistance, please contact Resiners customer support. We are committed to providing satisfactory solutions.

7. SPECIFICATIONS

Feature	Detail
Product Name	Resin Mixer
Item Model Number	R-072E
Product Dimensions	9.48 x 6.69 x 4.44 inches
Item Weight	3.65 pounds
Manufacturer	Resiners
Battery Capacity	2600mAh
Speed Range	0-300 RPM (Stepless)
Torque	800g.cm

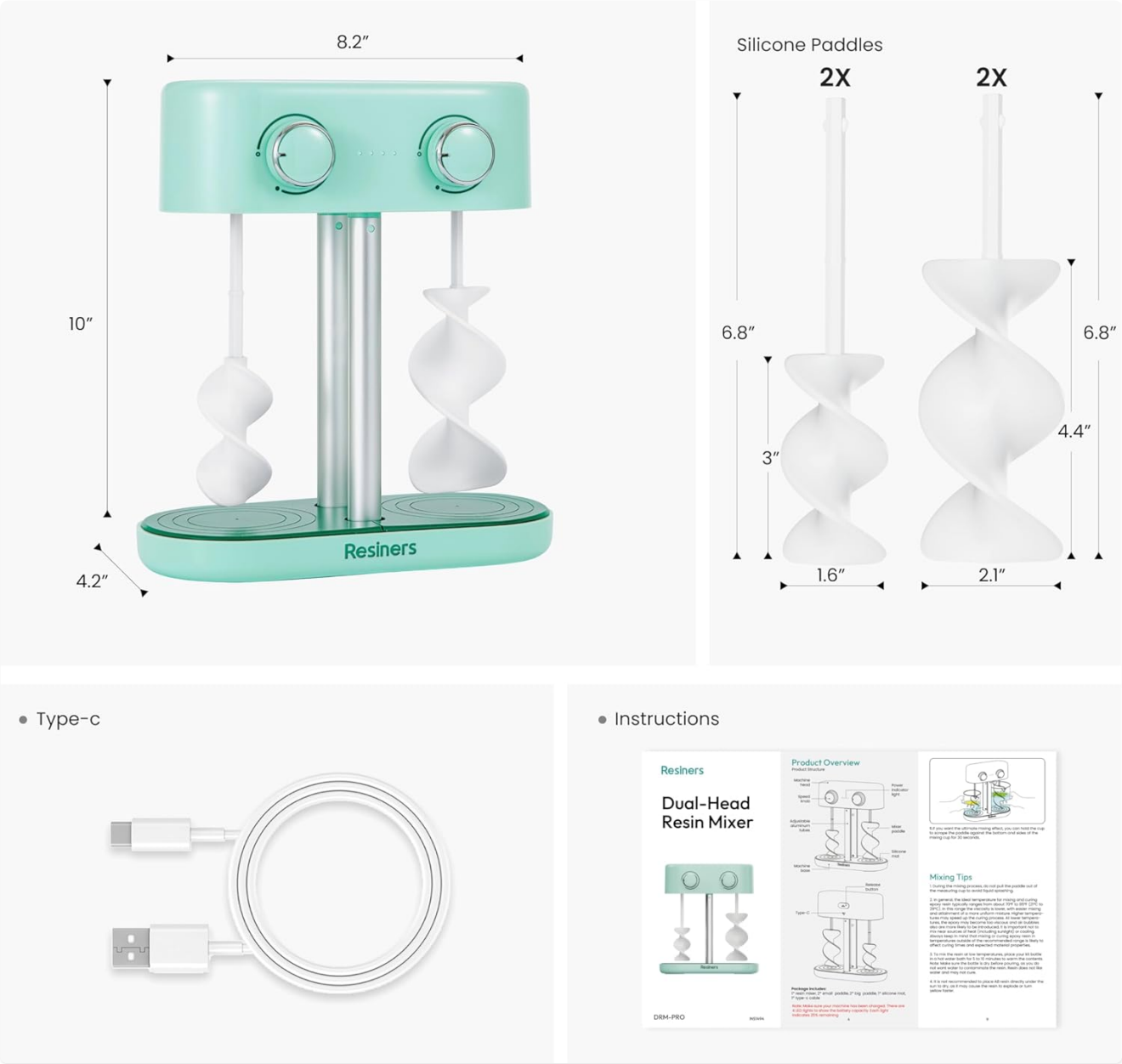


Figure 8: Product Dimensions

8. WARRANTY & SUPPORT

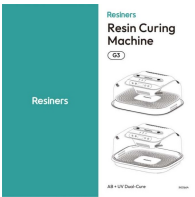
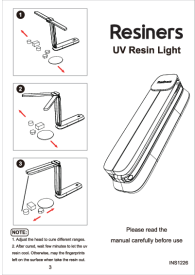

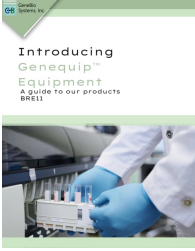
Resiners is dedicated to providing high-quality products and excellent customer experience. Your Dual-Head Resin Mixer comes with a **100% quality guarantee**.

If you have any questions, concerns, or require assistance with your product, please do not hesitate to contact our customer support team. We offer **24-hour after-sales service** to ensure your satisfaction.

For contact information, please refer to the packaging or the official Resiners website.

© 2024 Resiners. All rights reserved.

Related Documents - R-072E

	<p>Resiners Resin Curing Machine G3 User Manual and Guide</p> <p>Comprehensive guide to the Resiners Resin Curing Machine G3, covering setup, operation modes, safety precautions, and technical specifications for resin art and 3D printing.</p>
	<p>Resiners UV Resin Light UL01 User Manual and Specifications</p> <p>Official user manual and technical specifications for the Resiners UV Resin Light, model UL01. Learn about its features, control buttons, technology parameters, and instructions for use.</p>
	<p>Resiners Clear Space White Paper 2025: Redefining Air Quality for Resin Art Studios</p> <p>A white paper by Resiners exploring the hidden risks of VOCs in resin art studios and introducing the Resiners Air Purifier, designed to provide clean, safe air for creative professionals.</p>
	<p>Genequip™ Laboratory Equipment Catalog and Product Guide</p> <p>Explore the Genequip™ line of laboratory equipment from GeneBio Systems, Inc., including centrifuges, mixers, shakers, aspirators, electrophoresis systems, homogenizers, and imaging systems. This guide provides detailed specifications and features for each product.</p>