



[Manuals.plus](#) /

> [TychoLite](#) /

> TychoLite 4FT LED Wraparound Shop Light Instruction Manual

TychoLite 744603998448

TychoLite 4FT LED Wraparound Shop Light Instruction Manual

Model: 744603998448

1. PRODUCT OVERVIEW

The TychoLite 4FT LED Wraparound Shop Light is a lighting fixture designed for various indoor applications. It provides 6000 lumens of 5000K daylight white light with a power consumption of 50W. The fixture features an aluminum body with a frosted diffuser for uniform, glare-free illumination.

Key features include:

- **High Efficiency:** 50W power consumption for 6000 lumens output.
- **Color Temperature:** 5000K Daylight white.
- **Long Lifespan:** Rated for 50,000 hours of operation.
- **Integrated LED:** No additional bulbs required.
- **Installation Versatility:** Supports both surface mount and suspended mount installations.
- **Durable Construction:** Made from aluminum with a frosted diffuser.

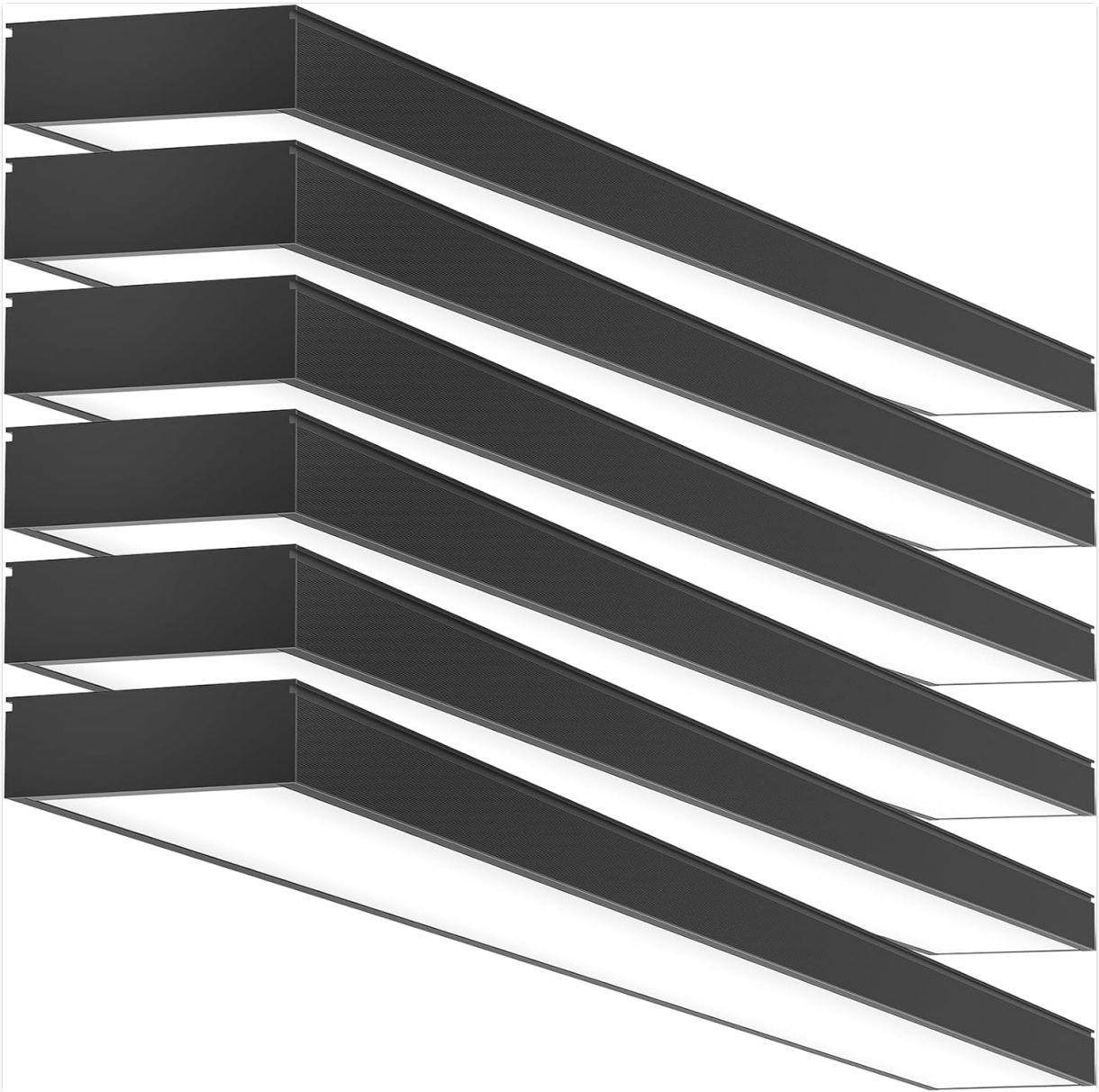


Image 1.1: TychoLite 4FT LED Wraparound Shop Lights.

2. SAFETY INFORMATION

Please read and understand all instructions before attempting to install or operate this fixture. Failure to do so may result in electric shock, fire, or other injuries that can be hazardous or even fatal.

- **Electrical Safety:** Always disconnect power at the circuit breaker or fuse box before installation or maintenance. Ensure the power supply voltage is compatible with the fixture (120V AC).
- **Installation:** Installation should be performed by a qualified electrician or a person familiar with the construction and operation of the product and the hazards involved.
- **Environment:** This fixture is designed for indoor use only. Do not expose to water or high humidity.
- **Handling:** Handle the fixture with care to avoid damage to the LED components or diffuser.
- **Heat:** Do not operate the fixture near flammable materials. Allow adequate ventilation around the fixture.

3. PACKAGE CONTENTS

Verify that all components are present and undamaged before proceeding with installation. If any parts are missing or damaged, contact customer support.

- LED Wraparound Shop Light Fixture(s)
- Mounting Screws
- Expansion Screws (for ceiling/wall)
- Hanging Chains (for suspended mount)
- S-Hooks (for suspended mount)
- Power Cord with ON/OFF Switch
- Instruction Manual (this document)

4. INSTALLATION INSTRUCTIONS

The TychoLite 4FT LED Wraparound Shop Light can be installed using either a flush mount or a suspended mount method. Choose the method appropriate for your application.

4.1. Flush Mount Installation

1. **Mark Positions:** Mark the position for each screw on the ceiling using a pencil. Ensure proper spacing for the fixture.
2. **Install Expansion Screws:** Insert the expansion screws into the marked holes. Secure the mounting buckle with the screws.
3. **Attach Fixture:** Fasten the light fixture to the buckle position. Verify that the fixture is securely installed.

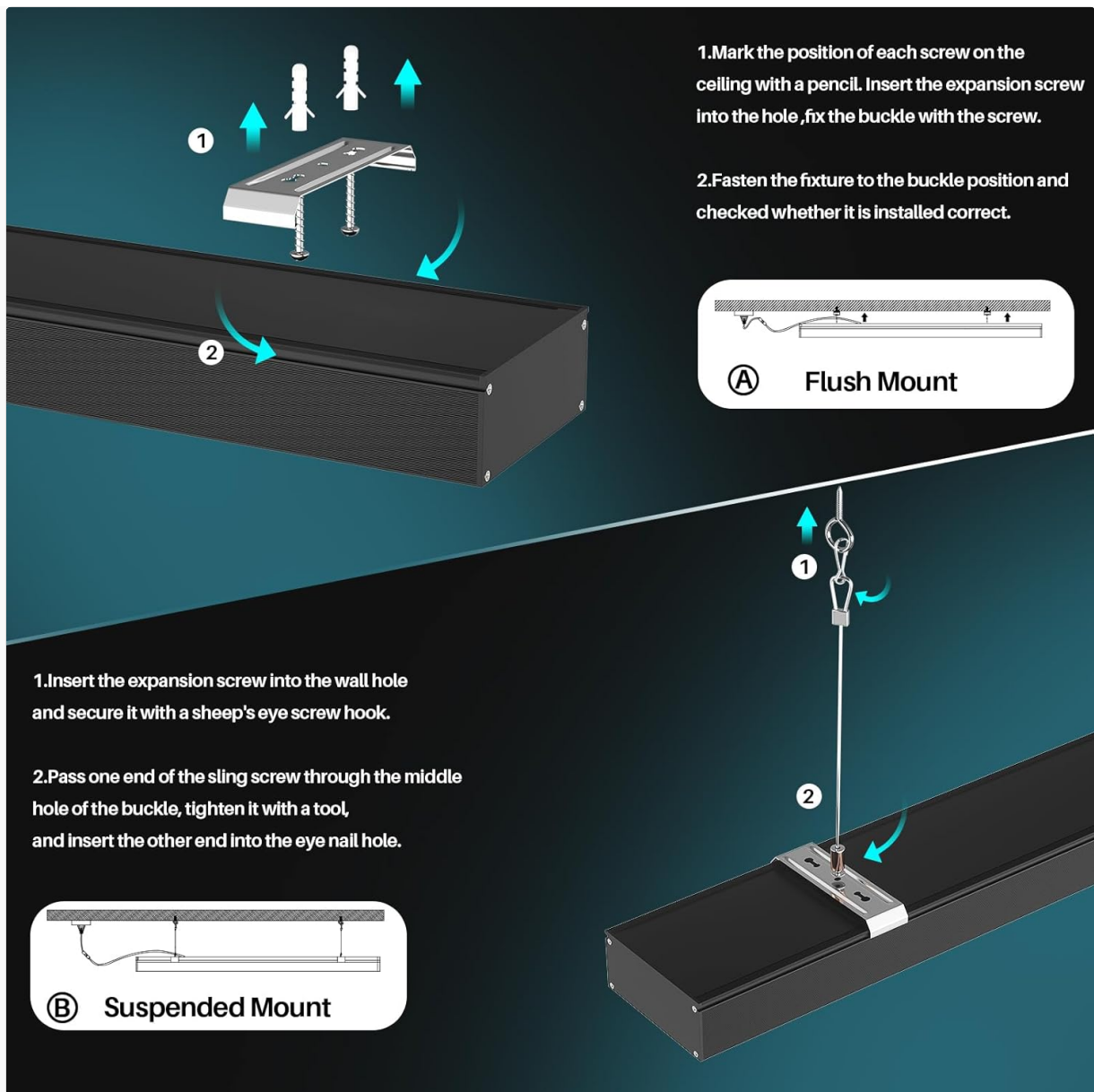


Image 4.1: Flush Mount Installation Diagram (Top part of image).

4.2. Suspended Mount Installation

1. **Install Eye Hook:** Insert an expansion screw into the wall or ceiling hole and secure it with a sheep's eye screw hook.
2. **Attach Sling Screw:** Pass one end of the sling screw through the middle hole of the buckle, tighten it with a tool, and insert the other end into the eye nail hole.
3. **Adjust Height:** Adjust the hanging chains to the desired height and ensure the fixture is level and secure.

Image 4.2: Suspended Mount Installation Diagram (Bottom part of Image 4.1).



5. OPERATING INSTRUCTIONS

The TychoLite 4FT LED Wraparound Shop Light is designed for simple plug-and-play operation.

1. **Connect Power:** After installation, plug the power cord into a standard 120V AC electrical outlet.
2. **Turn On/Off:** Use the integrated ON/OFF switch located on the power cord to control the light fixture.

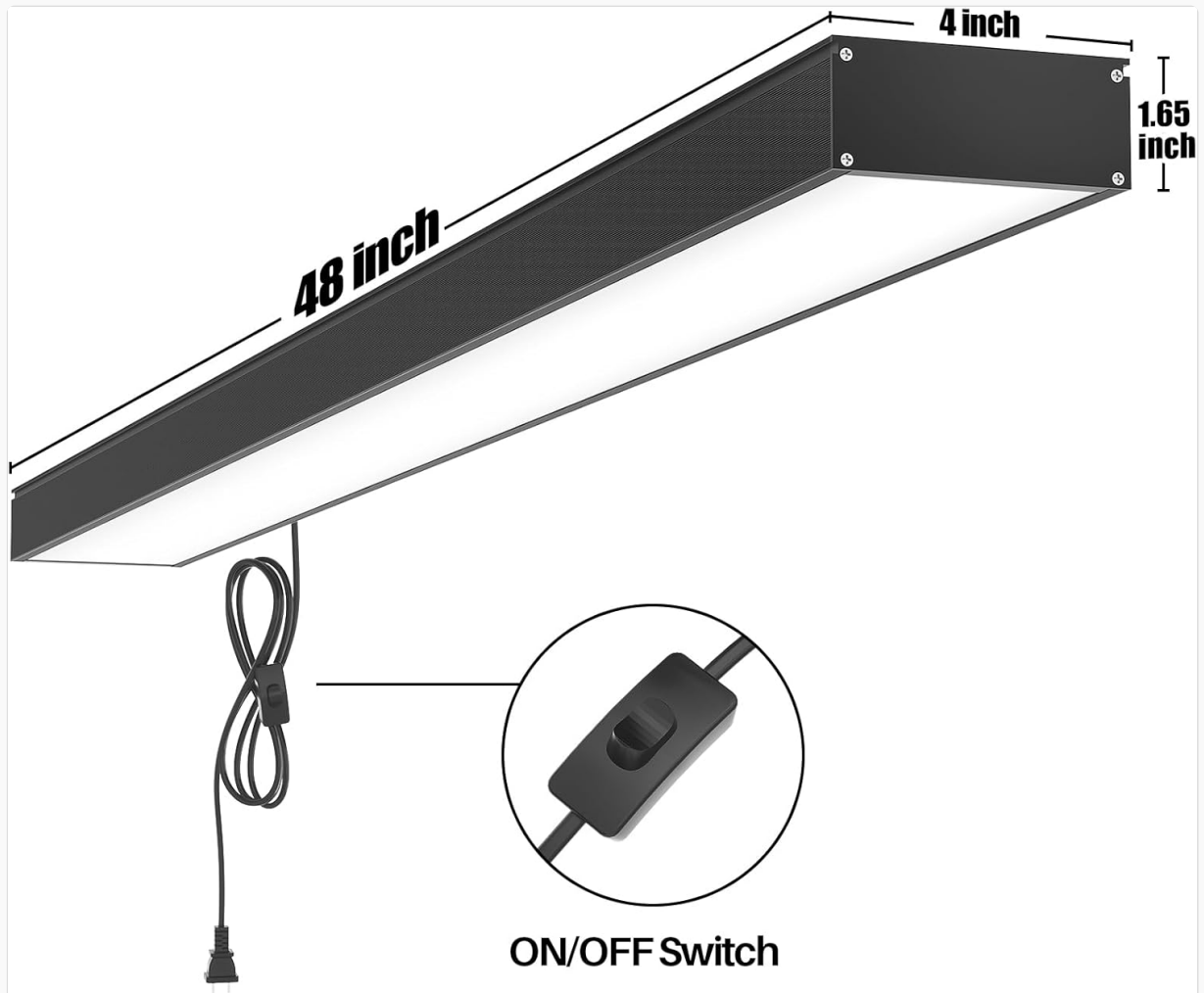


Image 5.1: Power Cord with ON/OFF Switch.



Image 5.2: Detail of the ON/OFF Switch.

6. MAINTENANCE

Regular maintenance ensures optimal performance and longevity of your LED light fixture.

- **Cleaning:** Disconnect power before cleaning. Use a soft, dry cloth to wipe the exterior of the fixture. Do not use abrasive cleaners or solvents.
- **Inspection:** Periodically inspect the power cord and mounting hardware for any signs of wear or damage.
- **LEDs:** The LED strips are integrated and do not require replacement. Do not attempt to open the fixture to access the LEDs.

7. TROUBLESHOOTING

If you encounter issues with your TychoLite LED Wraparound Shop Light, refer to the following common problems and solutions:

| Problem | Possible Cause | Solution |
|-------------------------|---|--|
| Light does not turn on. | No power supply; Switch is off; Loose connection. | Check if the power cord is securely plugged in. Ensure the ON/OFF switch is in the 'ON' position. Verify power at the outlet. Check circuit breaker. |
| Light flickers. | Unstable power supply; Loose wiring. | Ensure stable power supply. Check for loose connections (if applicable, consult a qualified electrician). |
| Reduced brightness. | Dust accumulation on diffuser. | Clean the diffuser with a soft, dry cloth. |

If the problem persists after attempting these solutions, please contact TychoLite customer support.

8. SPECIFICATIONS

| Feature | Detail |
|----------------------|------------------------------------|
| Brand | TychoLite |
| Model Number | 744603998448 |
| Wattage | 50W |
| Lumen Output | 6000lm |
| Color Temperature | 5000K Daylight White |
| Operating Voltage | 120V AC |
| Lifespan | 50,000 Hours |
| Material | Aluminum and frosted diffuser |
| Product Dimensions | 46.4"L x 4"W x 1.65"H |
| Installation Type | Ceiling Mount (Flush or Suspended) |
| Indoor/Outdoor Usage | Indoor use only |
| Control Method | Push Button (on cord) |

| Feature | Detail |
|-----------------------------|---------------------|
| Color Rendering Index (CRI) | 90 |
| Water Resistance Level | Not Water Resistant |

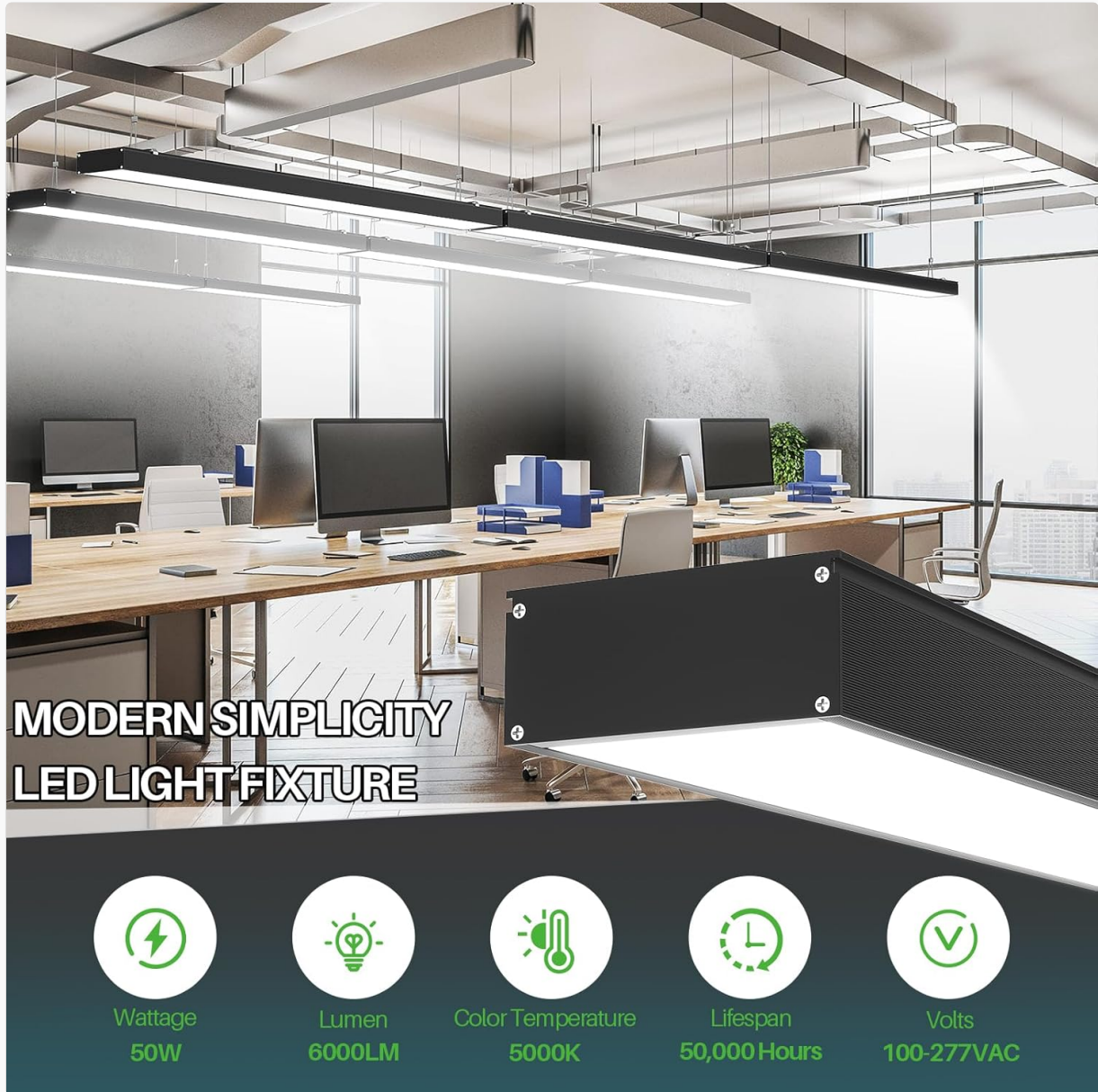


Image 8.1: Key Product Specifications.

9. WARRANTY AND SUPPORT

TychoLite is committed to providing quality products. If you have any questions, suggestions, or require assistance with your 4FT LED Wraparound Shop Light, please contact our professional technical department.

Refer to your purchase documentation or the TychoLite official website for specific warranty terms and contact information.

