

AODELAN For Sony

AODELAN Wireless Shooting Grip & Mini Tripod with Remote

Model: For Sony

INTRODUCTION

This manual provides detailed instructions for the AODELAN Wireless Shooting Grip and Mini Tripod. This versatile accessory is designed to enhance your photography and videography experience with compatible Sony cameras by offering stable handheld shooting, tripod functionality, and remote control capabilities. Please read this manual thoroughly before use to ensure proper operation and to maximize the product's potential.

Compatible Cameras: Sony ZV-E10, ZV-1, A7SM3, A7C, A7RIV, a9, a7R III, a7R IV, a9 II, a6600, a6400, a6100, a7 III, RX0 II, RX100 VII.

Note: Maximum load capacity is 1kg / 35.3 oz. Do not exceed this weight.

PRODUCT OVERVIEW

The AODELAN Shooting Grip serves as both a comfortable handheld grip and a stable mini tripod. It features a detachable wireless remote control for convenient operation from a distance.

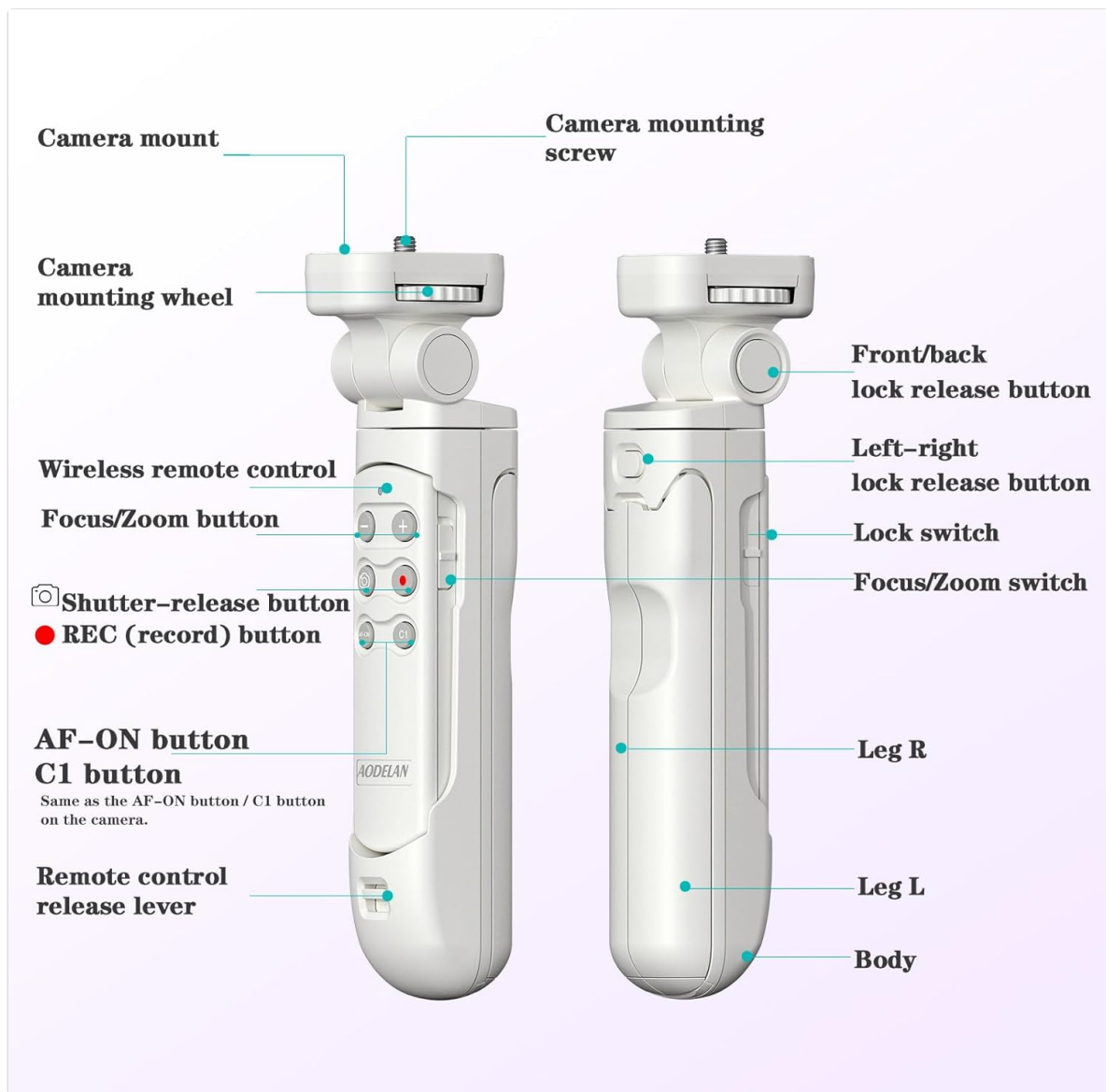


Figure 1: Key components of the AODELAN Shooting Grip and Remote Control. This image highlights the camera mount, camera mounting screw, camera mounting wheel, wireless remote control, Focus/Zoom button, Shutter-release button, REC (record) button, AF-ON button, C1 button, remote control release lever, Front/back lock release button, Left-right lock release button, Lock switch, Focus/Zoom switch, Leg R, Leg L, and Body.

Key Features:

- **Wireless Remote Commander:** Controls still and movie shooting without touching the camera.
- **Tripod Functionality:** Integrated legs convert the grip into a stable tripod.
- **Flexible Tilt Function:** Easily adjust the camera angle (90° forward, 45° backward, lockable every 15°).
- **360° Rotation:** The camera mount can be turned 360° and locked every 90° for vertical or horizontal shooting.
- **No Cable Required:** Bluetooth connectivity eliminates the need for cables.
- **Customizable C1 Button:** Any function assigned to the camera's C1 button can be recalled via the remote.



Figure 2: The AODELAN Shooting Grip used for handheld photography, demonstrating its compact form and remote control capabilities.



Figure 3: Visual representation of the grip's wireless range (32.8 ft), anti-shake design, 360° camera rotation, and -45° to 90° flip angle.

SETUP

1. Attaching Your Camera

1. Ensure the grip's legs are folded and the camera mount is in a stable position.
2. Align your Sony camera's tripod screw hole with the 1/4-inch screw on the grip's camera mount.
3. Turn the camera mounting wheel clockwise to securely fasten the camera to the grip. Do not overtighten.

2. Pairing the Wireless Remote Control

The remote control connects to your camera via Bluetooth. Follow these steps to pair:

1. On your Sony camera, navigate to the **Network2** settings menu.
2. Select **Bluetooth Settings** and ensure **Bluetooth Function** is set to **On**.
3. Also, ensure **Bluetooth Remote Control** is enabled in your camera's settings.

4. On the AODELAN Remote Control, press and hold the **Shutter-release button** and the **+ side of the Focus/Zoom button** simultaneously for at least 7 seconds. The remote's indicator light will flash, indicating it's in pairing mode.
5. On your camera screen, a confirmation message will appear. Select **[OK]** to complete the pairing process.

What's included

AODELAN Tripod Grid With Remote Control



Figure 4: The package contents, including the AODELAN Shooting Grip, wireless remote control, USB charging cable, and user manuals.

Video: Remote Control Pairing and Functionality

Your browser does not support the video tag.

This video demonstrates how to pair the AODELAN remote control with a Sony ZV-1 camera and showcases its basic functions, including recording and zooming. It highlights the importance of enabling Bluetooth remote control settings on the camera for successful pairing.

Video: AODELAN Remote Control Shutter for Sony Camera

Your browser does not support the video tag.

This video provides a quick guide on connecting the AODELAN RMT-P1BTA remote to a Sony camera, demonstrating how to enable Bluetooth function and pairing. It also shows how to shoot still images, record videos, zoom, and lock the remote control buttons.

OPERATING INSTRUCTIONS

1. Using as a Handheld Grip

Fold the tripod legs inward to use the device as a comfortable handheld grip for stable shooting while moving.

2. Using as a Mini Tripod

Spread the integrated legs outward to transform the grip into a stable mini tripod. Place it on a flat surface for stationary shooting, vlogging, or time-lapses.

3. Adjusting Camera Angle and Orientation

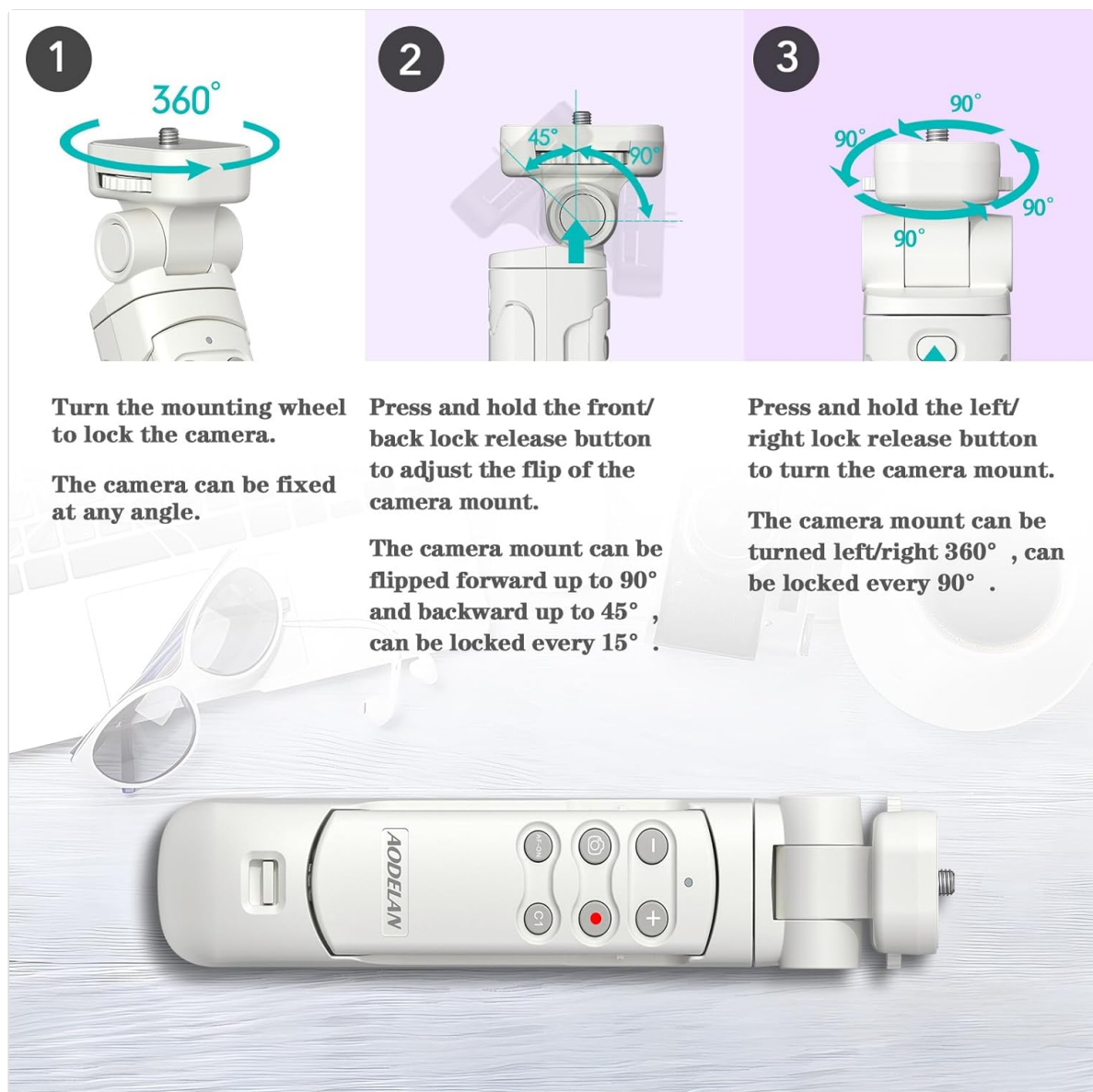


Figure 5: Step-by-step guide for adjusting the camera mount: 1. Turn the mounting wheel to lock the camera. 2. Press and hold the front/back lock release button to adjust the flip (up to 90° forward, 45° backward, lockable every 15°). 3. Press and hold the left/right lock release button to turn the camera mount 360° (lockable every 90°).

- **Tilt Adjustment:** Press and hold the front/back lock release button to adjust the camera's vertical tilt. The camera mount can be flipped up to 90° forward and backward up to 45°, with locking

positions every 15°.

- **Rotation Adjustment:** Press and hold the left/right lock release button to rotate the camera mount 360°. It can be locked every 90° for easy switching between horizontal and vertical shooting orientations.



Figure 6: Examples of shooting modes: vertical, horizontal, and selfie, demonstrating the grip's versatility.

4. Using the Wireless Remote Control

The detachable remote control allows you to operate your camera functions from a distance.

- **Shutter Release:** Press the Shutter-release button to take a still photo.
- **Video Recording:** Press the REC (record) button to start/stop video recording.
- **Zoom/Focus:** Use the + and - buttons to zoom in/out or adjust focus, depending on the selected mode (switch on the side of the remote).
- **AF-ON:** Activates autofocus.
- **C1 Button:** Functions as the custom C1 button configured on your camera.
- **Lock Switch:** Slide the LOCK switch on the side of the remote to the "LOCK" position to disable all buttons and prevent accidental presses.

Video: See the removable remote control on the tripod vlogging grip

Your browser does not support the video tag.

This video demonstrates the detachable remote control feature of the AODELAN Shooting Grip. It shows how to remove the remote, use its various buttons for camera control (zoom, focus, shutter, record, C1), and highlights the USB-C charging port and wrist strap.

MAINTENANCE

- **Cleaning:** Use a soft, dry cloth to clean the grip and remote. Avoid harsh chemicals or abrasive materials.
- **Storage:** Store the device in a cool, dry place away from direct sunlight and extreme temperatures. Ensure the remote control is locked to prevent battery drain.
- **Battery:** The remote control uses a rechargeable Lithium Ion battery (included). Charge via the USB-C port.

TROUBLESHOOTING

Remote Control Not Pairing:

- Ensure Bluetooth is enabled on your camera (Network2 > Bluetooth Settings > Bluetooth Function: On).
- Verify that "Bluetooth Remote Control" is also enabled in your camera's settings.
- Make sure the remote control is fully charged.
- Repeat the pairing steps carefully, holding the Shutter-release and + Focus/Zoom buttons for at least 7 seconds.

Remote Control Buttons Not Responding:

- Check if the LOCK switch on the side of the remote is in the "UNLOCKED" position.
- Ensure the remote is within the effective operating range (approximately 32.8 ft / 10 meters).
- Confirm that the remote is still paired with your camera. If not, re-pair it.

Camera Not Stable on Grip/Tripod:

- Ensure the camera mounting wheel is securely tightened.
- Verify that the camera's weight does not exceed the maximum load capacity of 1kg / 35.3 oz.
- For tripod use, ensure the legs are fully spread on a flat, stable surface.

SPECIFICATIONS

Feature	Detail
---------	--------

Package Dimensions	8.98 x 2.87 x 2.28 inches
Item Weight	14.9 ounces (0.42 Kilograms)
Material	Acrylonitrile Butadiene Styrene (ABS)
Weight Limit	1 Kilograms
Batteries	2 Lithium Ion batteries required (included)
Special Feature	Ergonomic
Folded Size	10 inches (l) x 4 inches (w) x 3 inches (h)



Figure 7: Detailed dimensions of the AODELAN Shooting Grip when used as a grip (1.48"x7.76"x1.56") and as a tripod (6.30"x6.03"x7.23"), along with its weight (6.3oz with remote) and maximum load capacity (35.3oz).

For warranty information and customer support, please refer to the documentation included in your product packaging or visit the official AODELAN website. Keep your purchase receipt for any warranty claims.