



Manuals.plus /

› JBL /

› JBL Tune 670NC Wireless On-Ear Headphones User Manual

## JBL JBLT670NCBLUAM

# JBL Tune 670NC Wireless On-Ear Headphones User Manual

Model: JBLT670NCBLUAM

## INTRODUCTION

---

The JBL Tune 670NC headphones are designed to provide an immersive audio experience with adaptive noise cancelling, smart ambient features, and the signature JBL Pure Bass Sound. This manual provides essential information for setting up, operating, maintaining, and troubleshooting your headphones.



Image: A pair of blue JBL Tune 670NC wireless on-ear headphones, showcasing their sleek design.

## WHAT'S IN THE BOX

---

- 1 x JBL Tune 670NC headphones
- 1 x USB-C Charging Cable
- 1 x Detachable audio cable
- 1 x Warranty/Warning document
- 1 x Quick Start Guide (QSG)

## SETUP

---

### Charging the Headphones

Before first use, fully charge your JBL Tune 670NC headphones. Connect the supplied USB-C charging cable to the charging port on the headphones and to a power source. A full charge takes approximately 2 hours. A quick 5-minute charge provides an additional 3 hours of music playback.

## Power On/Off

- To power on: Press and hold the power button located on the ear-cup until the LED indicator lights up.
- To power off: Press and hold the power button until the LED indicator turns off.

## Bluetooth Pairing

The JBL Tune 670NC headphones utilize Bluetooth 5.3 for stable wireless connectivity.

1. Ensure the headphones are powered off.
2. Press and hold the power button for approximately 5 seconds until the LED indicator flashes blue, indicating pairing mode.
3. On your device (smartphone, tablet, laptop), enable Bluetooth and search for available devices.
4. Select "JBL Tune 670NC" from the list of discovered devices.
5. Once connected, the LED indicator will turn solid blue.

**Multi-Point Connection:** These headphones support simultaneous connection to two Bluetooth devices. To switch between devices, simply pause audio on the first device and start playing on the second. For calls, the headphones will automatically switch to the device receiving the call.

# DIMENSIONES



Image: A close-up view of the JBL Tune 670NC headphones, highlighting the control buttons on the ear-cup.

## OPERATING THE HEADPHONES

---

### Adaptive Noise Cancelling (ANC) and Smart Ambient

The JBL Tune 670NC features Adaptive Noise Cancelling to minimize distractions. You can also activate Smart Ambient modes:

- **Ambient Aware:** Allows you to hear your surroundings without removing the headphones.
- **TalkThru:** Lowers music volume and amplifies voices, enabling conversations while wearing headphones.

These modes can be easily activated and managed through the JBL Headphones app.

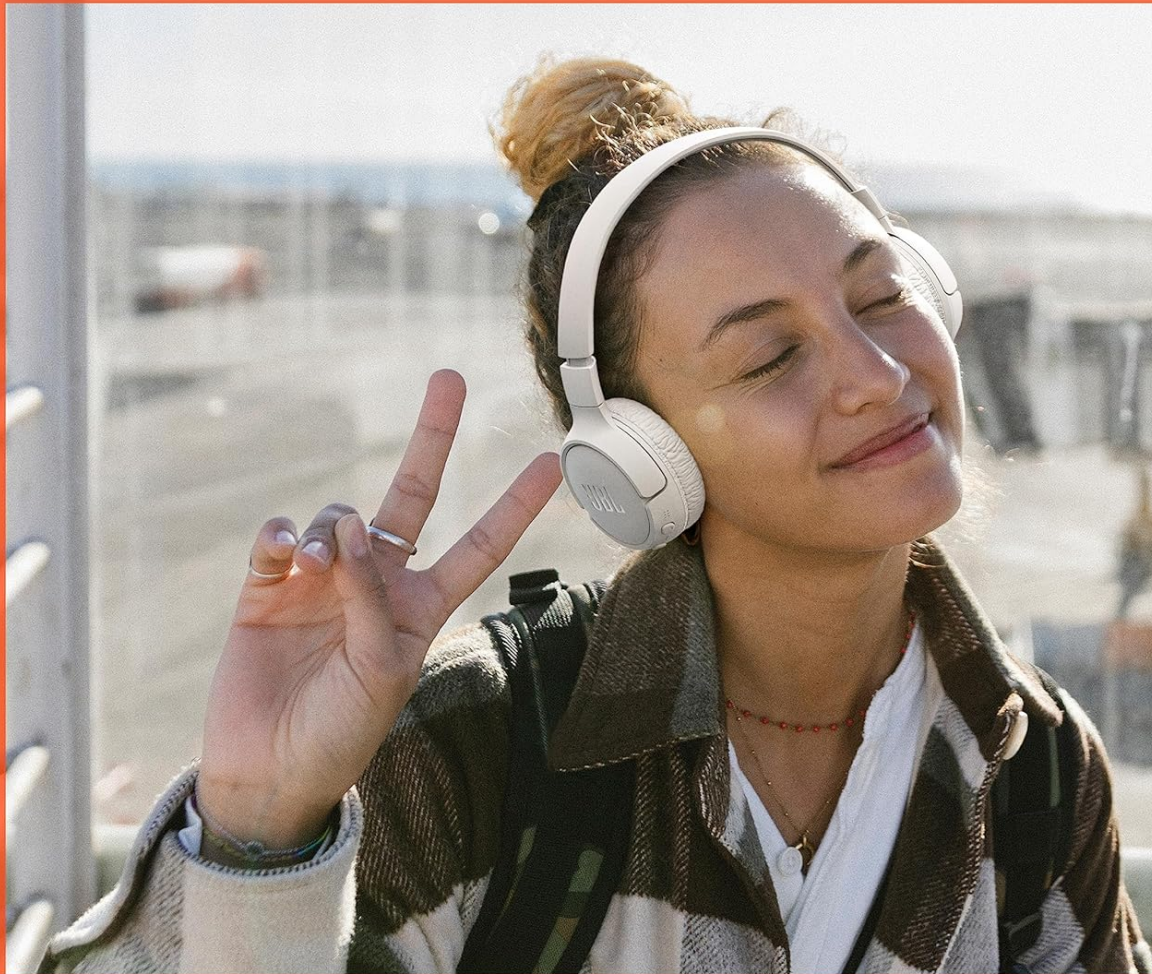


# ADAPTIVE NOISE CANCELLING AND SMART AMBIENT

Image: A person wearing black JBL Tune 670NC headphones, illustrating the use of Adaptive Noise Cancelling and Smart Ambient features in an urban environment.

## JBL Pure Bass Sound

Experience the renowned JBL Pure Bass Sound, delivering powerful and clear audio performance.



## JBL PURE BASS SOUND

Image: A person wearing white JBL Tune 670NC headphones, emphasizing the JBL Pure Bass Sound experience.

### JBL Headphones App

Download the free JBL Headphones App to customize your listening experience. The app allows you to:

- Tailor the sound with preset EQ modes or by adjusting the EQ curve.
- Activate Ambient Sound Control modes (Ambient Aware, TalkThru).
- Optimize Bluetooth performance with Smart Audio & Video features (select Audio for best sound quality or Video for optimal gaming/video output).
- Receive voice prompts in your preferred language.

### Hands-free Calls with VoiceAware

Manage your calls directly from the convenient buttons on the ear-cup. VoiceAware allows you to hear your own voice while speaking, enhancing call clarity and comfort.

### Comfort and Design

The JBL Tune 670NC headphones are designed to be lightweight, comfortable, and foldable for easy portability and storage.



Image: Blue JBL Tune 670NC headphones shown in their folded position, demonstrating their portability.

## MAINTENANCE

---

To ensure the longevity and optimal performance of your JBL Tune 670NC headphones, follow these maintenance guidelines:

- **Cleaning:** Use a soft, dry cloth to clean the ear-cups and headband. Avoid using harsh chemicals or abrasive materials.
- **Storage:** When not in use, store the headphones in a cool, dry place, away from direct sunlight and extreme temperatures. Utilize their foldable design for compact storage.
- **Battery Care:** Avoid fully discharging the battery frequently. For long-term storage, charge the headphones to about 50% to preserve battery health.
- **Liquid Exposure:** Do not expose the headphones to water or excessive moisture.

## TROUBLESHOOTING

---

If you encounter issues with your JBL Tune 670NC headphones, refer to the following common troubleshooting steps:

Problem	Possible Solution
Headphones do not power on	Ensure the battery is charged. Connect to a power source using the USB-C cable.
Cannot pair via Bluetooth	Ensure headphones are in pairing mode (flashing blue LED). Turn off and on Bluetooth on your device. Forget the device in your Bluetooth settings and try pairing again. Ensure no other devices are connected.
No sound or low volume	Check headphone and device volume levels. Ensure headphones are properly connected. Try playing audio from a different source.
Noise Cancelling not effective	Ensure ANC is activated. Adjust headphone fit on your ears. Some high-frequency sounds may not be fully cancelled.
Call quality issues	Ensure microphone is not obstructed. Check network signal on your phone. Use VoiceAware feature to monitor your own voice.
Headphones app not connecting	Ensure headphones are powered on and connected via Bluetooth to your device. Restart the app.

For more detailed troubleshooting or persistent issues, refer to the official JBL support website or contact customer service.

## SPECIFICATIONS

---

Key technical specifications for the JBL Tune 670NC headphones:

Feature	Detail
Model Name	JBL Tune 670NC
Model Number	JBLT670NCBLUAM
Noise Control	Adaptive Noise Cancellation
Frequency Response	20 Hz – 20 kHz
Connectivity Technology	Wireless (Bluetooth 5.3 with LE Audio*)
Battery Life	Up to 70 Hours
Charging Time	2 Hours (5 min for 3 hours speed charge)
Item Weight	174 Grams (6.1 ounces)
Product Dimensions	6.69 x 2.87 x 7.87 inches
Control Method	Button, Voice (Google Assistant, Siri)
Ear Placement	On-Ear
Material	Plastic
Included Components	Headphones, USB-C Charging Cable, Detachable audio cable, Warranty/Warning, QSG

\*LE Audio available via OTA update at a later stage.





Image: A diagram illustrating the dimensions of the JBL Tune 670NC headphones in centimeters.

## WARRANTY AND SUPPORT

---

Your JBL Tune 670NC headphones come with a manufacturer's warranty. Please refer to the included Warranty/Warning document for specific terms and conditions, including warranty period and coverage details.

For product support, technical assistance, or to inquire about warranty claims, please visit the official JBL support website or contact JBL customer service. Contact information can typically be found on the JBL website or in the product packaging.

### Online Resources:

- JBL Official Website: [www.jbl.com](http://www.jbl.com)
- JBL Support Page: (Check JBL website for specific support page link)