

NEEWER MS150C

NEEWER MS150C RGBWW LED Video Light Instruction Manual

Model: MS150C

Brand: NEEWER

INTRODUCTION

The NEEWER MS150C RGBWW LED Video Light is a versatile and powerful continuous output lighting solution designed for professional photography and videography. Featuring 2.4G and APP control, 150W output, and a Bowens Mount, this compact handheld spotlight offers precise color rendition and a wide range of creative effects. This manual provides essential information for setting up, operating, maintaining, and troubleshooting your MS150C LED Video Light.

Key Features

- **Advanced RGBWW Light Mixing & Precise PWM Dimming:** Enhanced color rendition with 2700K-6500K bi-color lighting, 150W output, and 18000lux/1m (4400K) illuminance. CRI97+/TLCI98+ for high color accuracy and flicker-free lighting.
- **Handheld Compact Design:** Lightweight aluminum alloy shell (1.5lb/700g), measuring 7.7"x3.7"x3.6"/195x95x92mm, ideal for portable use with a 180° tilt handle or tripod mounting.
- **6 Light Modes with 17 Special Effects:** Includes CCT, HSI, RGBCW, FX (17 scenes), SOURCE, and GEL (40 presets) for diverse lighting scenarios.
- **Infinity App & 2.4G Wireless Control:** Control via physical knobs, NEEWER APP with Infinity technology for firmware updates and multi-light control, or 2.4G system for group control across 00-99 channels within 49ft (15m).
- **Multiple Power Supplies Supported:** Operates via included power cable for wall sockets or optional V-mount battery (16.8V) and D-Tap cable for outdoor use.

PRODUCT OVERVIEW

Components and Design

POWERFUL LIGHT OUTPUT

Shine brighter than you ever expect.

150W

Maximum Input Power

81300lux at 0.5m (4400K)

Maximum Illumination (With Reflector)



Image: The NEEWER MS150C LED Video Light with its standard reflector attached, showcasing its powerful light output.

The MS150C features a robust aluminum alloy construction, ensuring durability while maintaining a lightweight profile. Its compact size allows for easy transport and flexible positioning in various shooting environments. The integrated Bowens Mount provides compatibility with a wide range of light modifiers.

COMPACTNESS IS KEY

Slightly larger than your palm, this light weighs only **2.31b (1041g)** for easy transport.



Ultra Mini Size



Portable



Image: The compact size of the NEEWER MS150C LED Video Light, easily held in one hand for portability.

The light is designed for both handheld use and mounting on light stands or tripods, offering a 180° tilt handle for precise angle adjustments. The premium COB LED beads ensure high color accuracy with CRI97+ and TLCI98+ ratings, crucial for professional video and photo production.



PREMIUM COB LED BEADS

High CRI 97+ & TLCI 98+
Everything appears in true color

NEEWER MS150C

OTHERS



Image: A close-up view of the NEEWER MS150C's COB LED beads, emphasizing the high-quality light source.

SETUP

Initial Setup

1. **Attach Reflector:** Align the standard reflector with the Bowens Mount on the front of the light and twist clockwise until it locks securely.
2. **Mounting:** Attach the MS150C to a compatible light stand or tripod using the integrated mounting bracket. Adjust the 180° tilt handle to achieve the desired lighting angle.
3. **Power Connection:** Connect the included power cable to the DC input port on the light and then to a wall socket. For outdoor use, connect a separately purchased V-mount battery (16.8V) via a D-Tap cable.



Image: The NEEWER MS150C LED Video Light mounted on a stand, demonstrating its adjustable handle and versatile positioning.

OPERATING INSTRUCTIONS

Control Modes

- **Physical Controls:** Use the knobs and buttons on the rear panel of the light to adjust settings directly.
- **NEEWER APP Control:** Download the NEEWER APP (available for iOS/Android) to control the light wirelessly via Bluetooth. The app supports Infinity technology for controlling multiple lights and OTA firmware updates.
- **2.4G Wireless System:** Utilize the built-in 2.4G system to group control multiple NEEWER LED lights (different models supported) across 00-99 channels within a 49ft (15m) range.

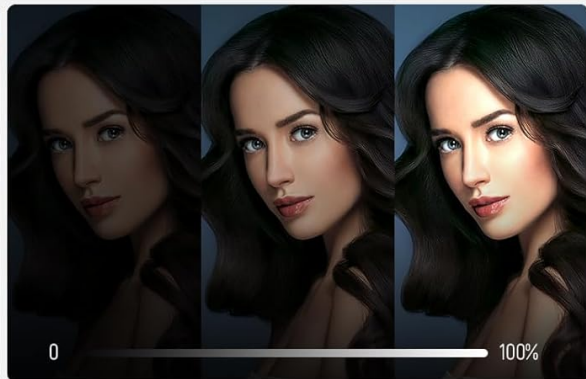


RGBWW TECHNOLOGY

Mix red, green, blue, cool & warm white in precise proportions for a wider color gamut and color temperature range, as well as accurate color reproduction.



Color Temperature



PWM Dimming Technology

Image: The NEEWER MS150C's RGBWW technology interface, showing color temperature and PWM dimming controls.

Light Modes and Special Effects

The MS150C offers a variety of lighting modes and 17 special effects to enhance your creative output:

- **CCT Mode:** Adjust color temperature from 2700K to 6500K with -50/+50 GM color correction.
- **HSI Mode:** Control hue (360° angles) and saturation (0-100%).
- **RGBCW Mode:** Individual adjustment for red, green, blue, cool white, and warm white channels.
- **FX Mode:** Choose from 17 realistic special scene effects including Lightning, Paparazzi, Defective Bulb, Explosion, Welding, CCT Flash, Hue Flash, Hue Pulse, Color Pulse, Cop Car, Candlelight, Hue Loop, CCT Loop, INT Loop, TV Screen, Fireworks, and Party.
- **SOURCE Mode:** For color pickup.
- **GEL Mode:** Access 40 color gel presets.



Image: Visual representation of the 17 realistic special effects available on the NEEWER MS150C LED Video Light.

POWER SUPPLY

The MS150C LED Video Light supports multiple power options for versatile use:

- **AC Power:** Connect the light to a standard wall socket using the included power cable for continuous, uninterrupted operation.
- **V-Mount Battery (Optional):** For outdoor or portable use, a 16.8V V-mount battery and a D-Tap cable can be purchased separately.
- **Important Note:** Batteries cannot be charged while being used. Power output is lowered to 95W when using a V-mount battery.

HEAT DISSIPATION

To ensure stable performance and longevity, the MS150C incorporates efficient heat dissipation mechanisms with three selectable modes:

- **Intelligent Mode:** Automatically adjusts fan speed based on temperature for optimal cooling and noise reduction.
- **High Speed Mode:** Provides maximum cooling for demanding situations.
- **Low Speed Mode:** Minimizes fan noise for audio-sensitive environments.



3 HEAT DISSIPATION MODES
Effectively protect the light from overheating.

Intelligent Mode High Speed Mode Low Speed Mode

INPUT POWER

19.6V Adapter not included	Fan Mode	2700K	3200K	4400K	5600K	6500K	R	G	B
	Intelligent Mode	103.3W	115.1W	135.3W	115.6W	100.9W	88.8W	85.5W	83.7W
High Speed	103.3W	115.1W	135.3W	115.6W	100.9W	88.8W	85.5W	83.7W	
Low Speed	54.9W	62.2W	75.3W	63.9W	54.5W	32.2W	31.2W	39.5W	

16.8V V Mount Battery	Fan Mode	2700K	3200K	4400K	5600K	6500K	R	G	B
	Intelligent Mode	91.7W	95.8W	91.4W	93.7W	91.4W	49.2W	51.6W	59.8W
High Speed	91.7W	95.8W	91.4W	93.7W	91.4W	49.2W	51.6W	59.8W	
Low Speed	49.1W	52.8W	52.1W	53.1W	50.2W	24.7W	21.8W	30.1W	

Image: Diagram illustrating the three heat dissipation modes and a table detailing input power at various color temperatures and fan settings.

MAINTENANCE

Proper maintenance ensures the longevity and optimal performance of your NEEWER MS150C LED Video Light:

- **Cleaning:** Use a soft, dry cloth to clean the exterior of the light. Avoid using harsh chemicals or abrasive materials.
- **Lens Care:** Gently clean the COB LED lens with a lens cleaning cloth and solution if necessary.
- **Storage:** Store the light in its original carrying case or a protective bag in a cool, dry place away from direct sunlight and extreme temperatures.
- **Ventilation:** Ensure the ventilation holes are clear of dust and debris to maintain proper heat dissipation.

TROUBLESHOOTING

If you encounter issues with your MS150C LED Video Light, refer to the following common troubleshooting steps:

- **Light Not Turning On:** Ensure the power cable is securely connected to both the light and the power outlet. If using a battery, check its charge level.
- **App Connectivity Issues:** Verify Bluetooth is enabled on your mobile device and the light. Ensure the light is within the effective range (49ft/15m). Try restarting both the app and the light.
- **Overheating:** Check that the ventilation holes are not obstructed. Ensure the fan mode is set appropriately for the operating conditions. Reduce brightness if operating in a high-temperature environment.
- **Flickering:** Ensure the light is receiving stable power. If using a battery, check its condition.

SPECIFICATIONS

Feature	Value
Product Dimensions	7.7"L x 3.7"W x 3.6"H
Item Weight	5.92 pounds
Item Model Number	MS150C
Brand	NEEWER
Connectivity Technology	Radio Frequency
Manufacturer	NEEWER
Date First Available	January 25, 2024

WARRANTY AND SUPPORT

The NEEWER MS150C RGBWW LED Video Light comes with a standard manufacturer's warranty. For detailed warranty information, product support, or technical assistance, please visit the official NEEWER website or contact their customer service department. Keep your purchase receipt for warranty claims.

OFFICIAL PRODUCT VIDEOS

Watch these official product videos from NEEWER for visual demonstrations and further insights into the MS150C LED Video Light.

Video: NEEWER CB120B 120W LED Video Light. This video demonstrates the features and capabilities of a similar NEEWER light model, including its lightweight body, flexible adjustment, universal Bowens mount, app control, color temperature range, uniform spectral distribution, ultra-quiet cooling fan, and 12 scene effects.