



[Manuals.plus](#) /

> [MCEVKELN](#) /

> MCEVKELN J1772 EV Charger Holder & Cable Organizer Instruction Manual (Model MCUSBG)

MCEVKELN MCUSBG

MCEVKELN J1772 EV Charger Holder & Cable Organizer Instruction Manual

Model: MCUSBG

1. PRODUCT OVERVIEW

The MCEVKELN J1772 EV Charger Holder and Cable Organizer is designed to provide a secure and organized solution for your electric vehicle charging equipment. This wall-mounted accessory helps keep your charging area tidy, protects your charger, and simplifies daily use.

PROTECT YOUR EV CHARGER FOR EASY USE



Image 1: EV Charger securely held and cable organized, ensuring easy operation and display readability.

2. PACKAGE CONTENTS

Please verify that all items listed below are included in your package:

- 1x EV Charger Box Holder
- 1x J1772 Cable Holder
- 9x Mounting Screws
- 7x Wall Anchors
- 1x Installation Guide

Image 2: All components included in the MCEVKELN J1772 EV Charger Holder set.

3. SETUP AND INSTALLATION

Follow these steps to properly install your MCEVKELN EV Charger Holder and Cable Organizer.

3.1 EV Charger Box Holder Installation

1. **Adjust Brackets:** Adjust the left and right brackets of the EV charger box holder according to the size of your EV charger control box. The holder is adjustable to fit control boxes up to 13 cm x 9 cm.
2. **Mark Position:** Place the adjusted holder against the wall at your desired installation height and mark the screw hole positions.
3. **Drill Holes:** Drill holes at the marked positions. Insert the wall anchors into the drilled holes.
4. **Secure Holder:** Fix the EV charger box holder to the wall using the provided screws.
5. **Insert Charger:** Place your EV charger control box into the secured holder.

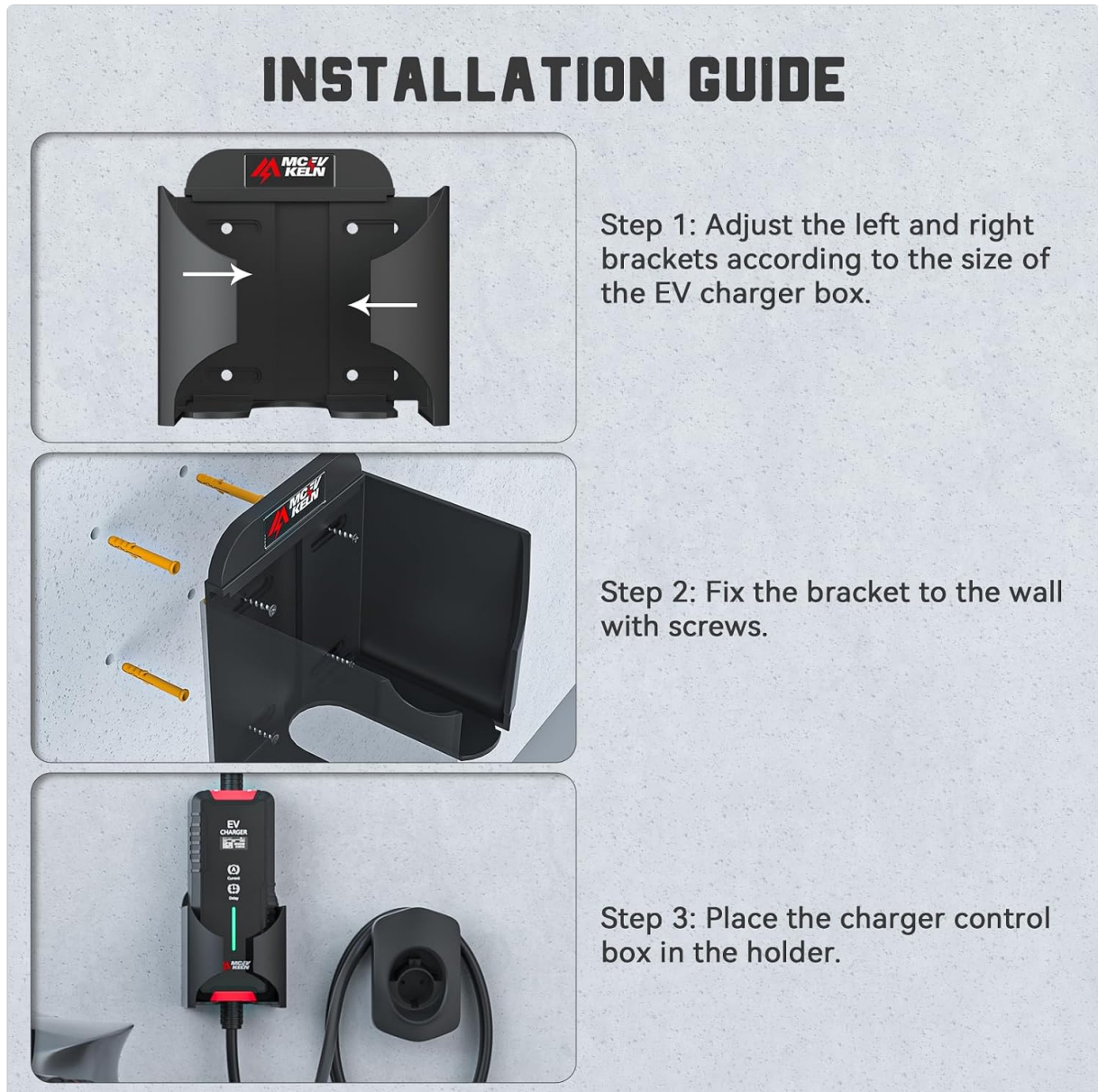


Image 3: Step-by-step visual guide for installing the EV charger box holder.

3.2 J1772 Cable Holder Installation

1. **Mark Position:** Choose a suitable location near the charger box holder for the J1772 cable holder. Mark the screw hole positions.
2. **Drill Holes:** Drill holes and insert wall anchors.
3. **Secure Back Cover:** Fix the back cover of the J1772 cable holder to the wall with the long screws.
4. **Attach Front Cover:** Place the front cover onto the back cover and secure it with the short screws.

5. **Organize Cable:** Insert the J1772 charging handle into the holder and neatly wrap the cable around it.



Image 4: Visual guide for installing the J1772 cable holder and organizing the cable.

4. OPERATING INSTRUCTIONS

Once installed, the MCEVKELN J1772 EV Charger Holder provides a convenient and secure location for your EV charging equipment.

- **Secure Charging Handle:** Insert your J1772 charging handle into the cable holder. The clip design ensures a better fix, preventing it from falling off.
- **Cable Management:** Wrap the charging cable around the cable holder to keep it neatly organized and off the ground. This prevents tangling and potential damage.
- **Charger Box Placement:** Ensure your EV charger control box is securely seated in its adjustable holder. This keeps the display visible and accessible.

Image 5: The holder transforms a messy charging area into an organized, safe, and easy-to-use station.

5. PRODUCT FEATURES

- **Adjustable & Universal Design:** The charger holder adjusts to fit various EV charging control box sizes (up to 13x9 cm), making it suitable for most EV chargers.
- **High-Quality ABS Material:** Made of sturdy ABS plastic, ensuring durability for both indoor and outdoor use. It is weather-resistant and robust.
- **Organized Charging Area:** Keeps your EV charger, charging handle, and cable neatly stored, saving space and maintaining tidiness.
- **Rounded Design:** Reduces the risk of cable damage from sharp edges.
- **Slope Design:** Waterproof and dustproof, preventing rain or debris buildup in the holder.
- **Clip Design:** Better fixes the charging plug, preventing it from easily falling off.
- **Cable Organizer:** Able to withstand charging cable weights of up to 10 kg.



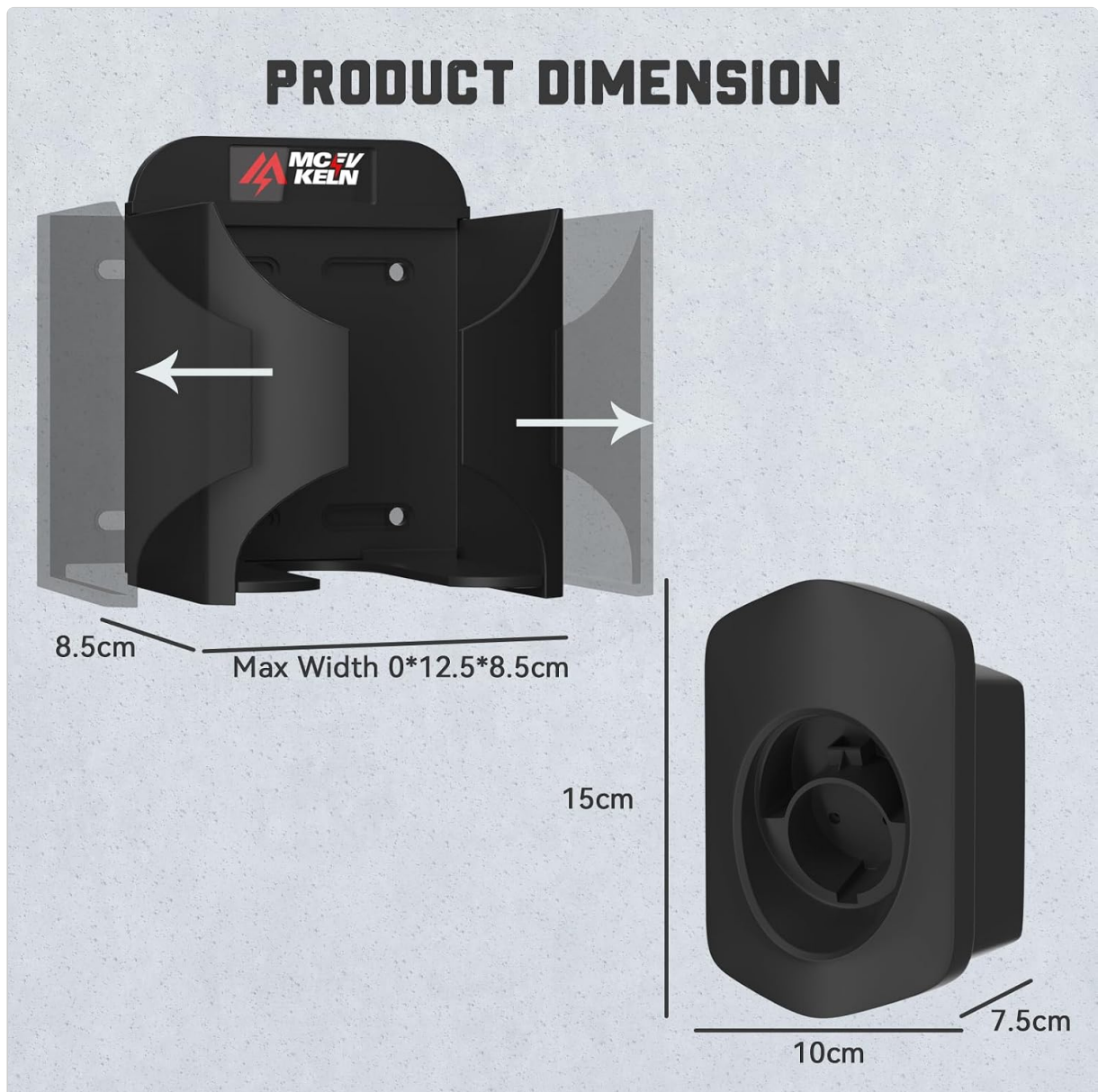
Image 6: The holder is compatible with a wide range of EV charger control boxes (Max 13 x 9 cm).

Image 7: Features like durable ABS material and rounded design enhance product longevity and cable safety.

Image 8: Innovative design elements like the slope, clip, and robust cable organizer.

6. SPECIFICATIONS

Attribute	Detail
Mounting Type	Wall Mount
Manufacturer	MCEVKELN
Model	MCUSBG
Material	ABS Plastic
Color	Black
Item Weight	460 g
Control Box Compatibility	Up to 13 cm x 9 cm
Cable Holder Capacity	Up to 10 kg



7. MAINTENANCE

To ensure the longevity and proper function of your MCEVKELN EV Charger Holder, follow these simple maintenance guidelines:

- **Cleaning:** Regularly wipe the holder with a soft, damp cloth to remove dust and dirt. Avoid using harsh chemicals or abrasive cleaners, as these may damage the ABS plastic.
- **Inspection:** Periodically check the mounting screws and wall anchors to ensure they remain tight and secure. Re-tighten if necessary.
- **Cable Care:** Always wrap the charging cable neatly around the holder after use to prevent kinks, tangles, and unnecessary stress on the cable and connectors.
- **Environmental Protection:** While the holder is designed to be weather-resistant, prolonged exposure to extreme weather conditions may affect its appearance over time.

8. TROUBLESHOOTING

If you encounter any issues with your EV Charger Holder, please refer to the following common solutions:

- **Charger Box Does Not Fit:** Ensure the adjustable brackets of the charger box holder are correctly positioned and tightened to accommodate your specific charger's dimensions (up to 13x9 cm). Measure your charger before installation.
- **Cable Not Staying Organized:** Confirm that the J1772 charging handle is fully inserted into its holder and that the cable is wrapped securely. The holder is designed to manage cables effectively.
- **Holder Feels Loose:** Check all mounting screws and wall anchors. If they are loose, carefully re-tighten them. If the wall material is compromised, consider relocating the holder or using stronger anchors.
- **Damage to Holder:** The holder is made of durable ABS plastic. If any part is cracked or broken, discontinue use and consider replacing the unit to ensure proper functionality and safety.

9. WARRANTY AND SUPPORT

MCEVKELN products are manufactured with quality and customer satisfaction in mind. For specific warranty information or technical support, please refer to the warranty card included in your package or contact MCEVKELN customer service directly through the retailer's platform where the product was purchased.

Please have your product model number (MCUSBG) and purchase details ready when contacting support.