

manuals.plus /

› **GAMDIAS** /

› **GAMDIAS AEOLUS P2-1201 120mm ARGB PWM Case Fan User Manual**

GAMDIAS AEOLUS P2-1201

GAMDIAS AEOLUS P2-1201 120mm ARGB PWM Case Fan User Manual

Model: AEOLUS P2-1201

1. INTRODUCTION

The GAMDIAS AEOLUS P2-1201 is a 120mm ARGB PWM case fan designed for efficient PC cooling. It features a 30mm thick frame for enhanced airflow and static pressure, a cableless daisy chain design for simplified installation, and swappable fan blades to optimize airflow direction. The fan integrates addressable RGB lighting, controllable via motherboard sync software or GAMDIAS ZEUS CAST software.

NEW ERA OF COOLING

The AEOLUS P2-1201 is an advanced cooling solution with innovative features. It comes with a cableless daisy chain design for easy cable management, included swappable fan blades for optimized airflow configuration, and a 30mm thick PWM fan with hydraulic bearing for extreme cooling performance. Designed with dual infinity mirrors and lighting strips on the frame and around the aluminum logo plate, the AEOLUS P2-1201 is compatible with both USB AEOLUS BOX II and ZEUS CAST software and for users to adjust fan speed and lighting effects.

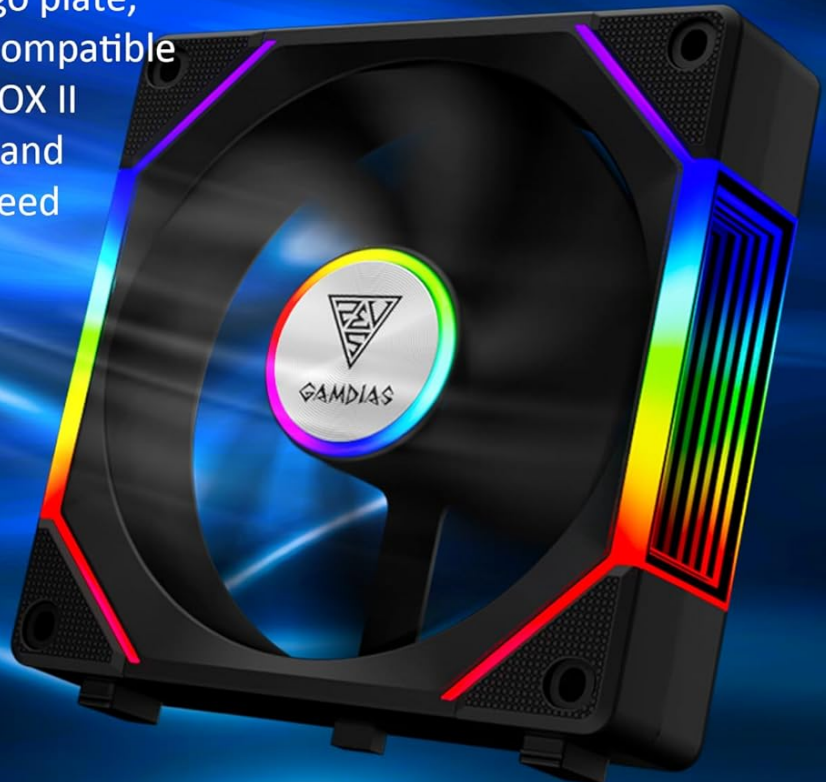


Image: The GAMDIAS AEOLUS P2-1201 fan, highlighting its advanced cooling features.

Key Features:

- **Extraordinary Cooling:** 30mm thick frame for superior airflow (75 CFM) and static pressure (3.1mmH₂O).
- **Easy Installation:** Cableless daisy chain design for clean cable management.
- **Customizable RGB Lighting:** Dual infinity mirrors and lighting strips, compatible with ZEUS CAST software and RGB motherboards.
- **Swappable Fan Blades:** Includes both standard and reverse fan blades for flexible airflow configuration.

2. PACKAGE CONTENTS

Verify that all components are present in your package:

- 1x GAMDIAS AEOLUS P2-1201 120mm ARGB PWM Case Fan (with standard blade pre-installed)
- 1x Reverse Fan Blade
- 4x Mounting Screws

- 1x Motherboard RGB Sync Cable
- 1x PWM Cable



Image: The package includes one fan, an additional reverse fan blade, mounting screws, and necessary connection cables.

3. SETUP AND INSTALLATION

3.1. Cableless Daisy Chain Connection

The AEOLUS P2 fans feature a cableless daisy chain design, allowing multiple fans to connect directly to each other without individual cables. This simplifies cable management and creates a cleaner build. Align the interlocking structural design and firmly press the fans together until they click into place.

CABLELESS DAISY CHAIN DESIGN

Each AEOLUS P2 fan is able to attach together without multiple cables due to a solid interlocking structural design, creating a convenient assembly experience. Daisy-chain clusters of fans and connect them to the USB AEOLUS BOX II to fully customize fan speed and lighting effects through ZEUS CAST software.



Image: Demonstrates how two fans connect using the cableless daisy chain feature.

3.2. Installation Flexibility

For radiator mounting or specific case configurations, the tenons on the side of the fan frame can be rotated and pulled out. This provides a neat and tidy appearance and allows for easier installation in tight spaces.

INSTALLATION FLEXIBILITY

The tenons on the side can be easily removed by rotating and pulling them out, providing a neat and tidy outlook while installing the radiator.



Image: Details the removable tenons for enhanced installation flexibility.

3.3. Connecting to Motherboard for RGB Sync

Connect the included Motherboard RGB Sync Cable to your motherboard's compatible ARGB header (e.g., ASUS Aura Sync, GIGABYTE RGB Fusion, MSI Mystic Light Sync, ASRock Polychrome Sync). This allows you to control the fan's lighting effects directly through your motherboard's software.

GORGEOUS ILLUMINATION

The motherboard RGB sync cable and the lighting controller are included in the product pack. Lighting effects can be adjusted via the motherboard manufacturers' sync software or through the wired lighting controller with 30 built-in modes.

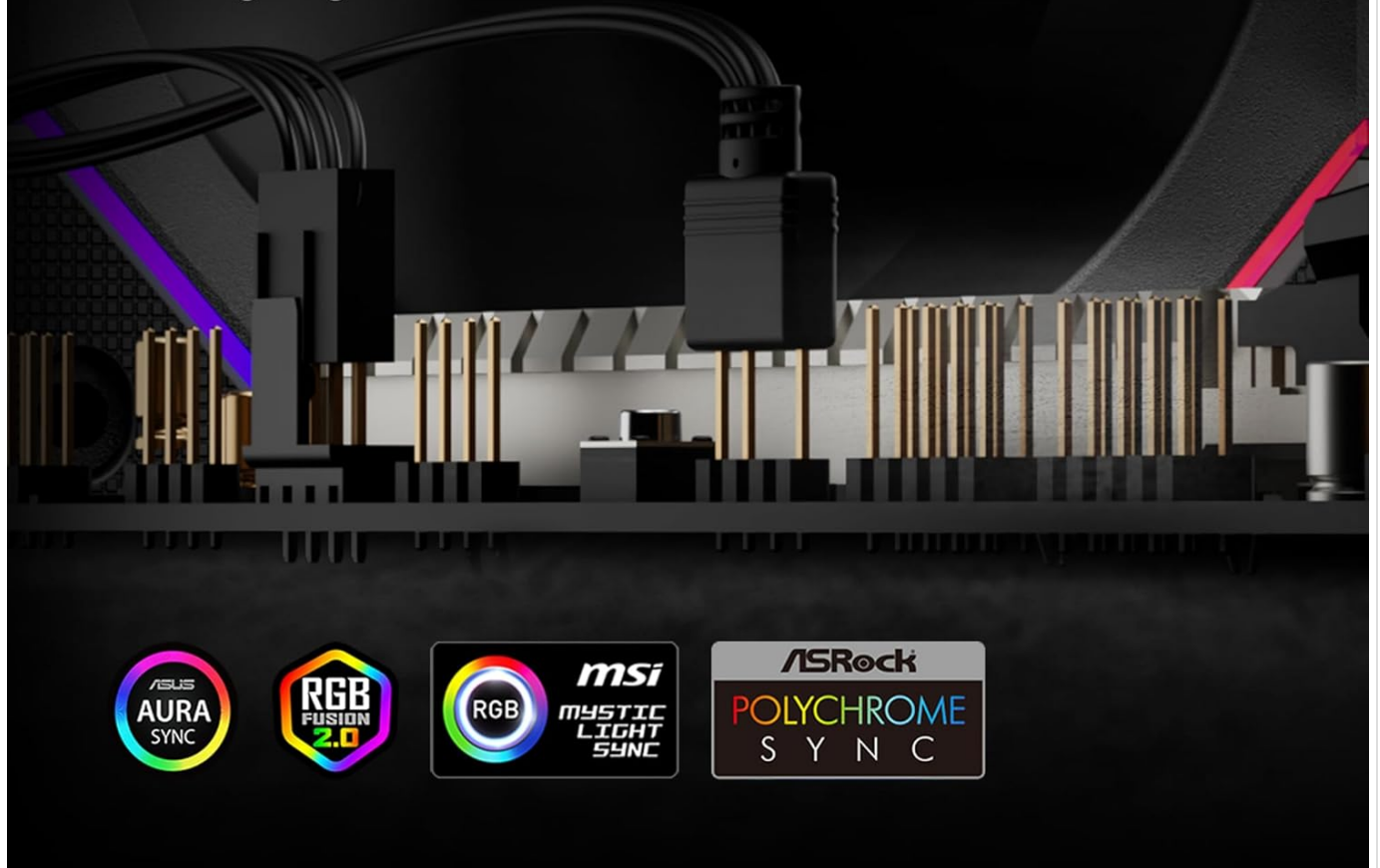


Image: Visual representation of connecting the fan to a motherboard for RGB synchronization.

4. OPERATING INSTRUCTIONS

4.1. Swapping Fan Blades for Airflow Configuration

The AEOLUS P2-1201 includes both a standard and a reverse fan blade. This allows you to customize the airflow direction (intake or exhaust) to suit your PC's cooling needs and aesthetic preferences. To swap blades, gently pull the installed blade off the motor hub and press the desired blade onto the hub until it is securely seated.

SWAPPABLE FAN BLADE INCLUDED

AEOLUS P2-1201 includes a pre-installed standard fan blade and an attached swappable one which offers a flexible option on switching the airflow from intake to exhaust at any time. It is also equipped with hydraulic bearing and PWM functions to generate maximum airflow while minimizing noise and ensuring a long lifespan.



Image: Displays the fan with its pre-installed standard blade and the included swappable reverse blade.

AIRFLOW CONFIGURATION

The AEOLUS P2 fans allow you to express creativity in building a PC by replacing swappable fan blades and configuring the airflow direction of PC fans and radiator fans with high airflow and clean appearance.



Image: Illustrates how to configure airflow within a PC case using swappable fan blades for optimal cooling.

4.2. RGB Lighting and Fan Speed Control

The fan's ARGB lighting features dual infinity mirrors and lighting strips. You can control these effects and the fan speed using:

- **Motherboard RGB Software:** If connected to a compatible ARGB header, use your motherboard's dedicated software (e.g., ASUS Aura Sync, MSI Mystic Light Sync) to synchronize and customize lighting.
- **GAMDIAS ZEUS CAST Software:** For advanced customization of lighting effects, brightness, and fan speed, connect the fan to a USB AEOLUS BOX II (sold separately or included in multi-fan packs) and use the ZEUS CAST software. This software also provides real-time monitoring of cooling performance.

GLOW IN STYLE

The moded aluminum logo plate on the front and black, ARGB strips on the edge of the frame, and dual infinity mirrors on both sides showcase the beauty of illuminating lighting from any angle.



Image: Highlights the aesthetic appeal of the fan's ARGB lighting and infinity mirror effects.

GAMDIAS ECOSYSTEM

The AEOLUS P2-1201 is compatible with USB AEOLUS BOX II and ZEUS CAST software. Users can customize the lighting effects including the interior and exterior strips, brightness and lighting speed via ZEUS CAST software when the fan is connected to the USB AEOLUS BOX II. ZEUS CAST software also allows adjustment to the fan speed based on the temperature and provides the real-time status to monitor cooling performance.



**Compatible with
USB AEOLUS BOX II and ZEUS CAST Software**



Image: Illustrates the GAMDIAS ecosystem, showing compatibility with USB AEOLUS BOX II and ZEUS CAST software for comprehensive control.

5. MAINTENANCE

Regular maintenance ensures optimal performance and longevity of your fan.

- **Cleaning:** Periodically clean the fan blades and frame to prevent dust buildup, which can impede airflow and reduce cooling efficiency. The swappable fan blades make cleaning easier; simply remove the blade and wipe it with a soft, dry cloth.
- **Inspection:** Check cables for any signs of wear or damage. Ensure all connections are secure.

6. TROUBLESHOOTING

If you encounter issues with your GAMDIAS AEOLUS P2-1201 fan, refer to the following common solutions:

- **Fan Not Spinning:**

- Ensure the PWM cable is securely connected to the motherboard's fan header.
- Check BIOS/UEFI settings to confirm the fan header is enabled and configured correctly.
- If daisy-chained, ensure the primary fan is correctly connected to the power source.

- **RGB Lighting Not Working:**

- Verify the ARGB sync cable is properly connected to a compatible motherboard header.
- Ensure your motherboard's RGB software is installed and updated.
- If using a USB AEOLUS BOX II, confirm it is connected and ZEUS CAST software is running.
- Check for any physical damage to the ARGB cable or connectors.

- **Excessive Noise:**

- Ensure mounting screws are tightened to prevent vibration.
- Check for any obstructions (e.g., cables) hitting the fan blades.
- Clean the fan blades to remove dust buildup.
- Adjust fan speed settings in your motherboard's BIOS/UEFI or ZEUS CAST software to a lower RPM if noise is a concern.

7. SPECIFICATIONS

Detailed specifications for the GAMDIAS AEOLUS P2-1201 fan:

Feature	Specification
Product Dimensions	4.72 x 4.72 x 1.18 inches (120 x 120 x 30 mm)
Item Model Number	AEOLUS P2-1201
Manufacturer	GAMDIAS
Power Connector Type	4-Pin PWM
Voltage	12 Volts
Wattage	1.92 watts
Cooling Method	Air
Compatible Devices	Desktop PCs
Noise Level	20 dB (advertised)
Material	Aluminum (logo plate)
Maximum Rotational Speed	2400 RPM
Air Flow Capacity	75 Cubic Feet Per Minute (CFM)
Static Pressure	Up to 3.1mmH2O

30MM FRAME THICKNESS

By increasing the thickness of frame to 30mm, it expands the contact surface and offers better air pressure of up to 3.1mmH₂O and airflow up to 74.97 CFM with fan speed ranges between 1000 and 2400 RPM to cool the PC down with quiet operation.



Image: Illustrates the 30mm frame thickness of the fan, contributing to its performance.

COMPARISON

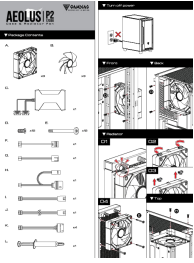
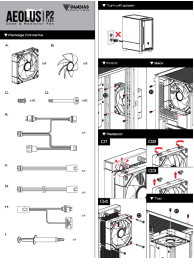



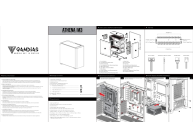
	AEOLUS P2-1201	AEOLUS P2-1203	AEOLUS P2-1203U
Fan	1PC	3PCS	3PCS
Reverse Fan Blade	1PC	3PCS	3PCS
Motherboard RGB Sync Cable	1PC	1PC	1PC
Lighting Controller	X	1PC	X
Extension Cable	X	2PCS	2PCS
Fan USB Cable	X	X	4PCS
USB Cable	X	X	1PC
PWM Cable	X	X	1PC
ZEUS CAST software	compatible	compatible	compatible
USB AEOLUS BOX II	not included but compatible	not included but compatible	1PC

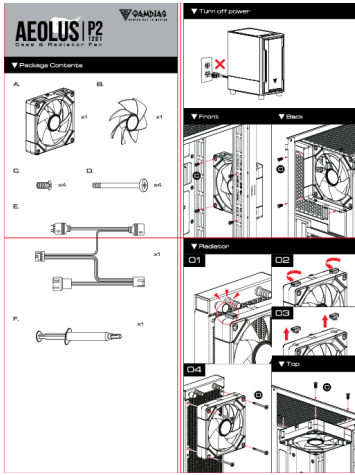
Image: A comparison table detailing features across different AEOLUS P2 models.

8. WARRANTY AND SUPPORT

GAMDIAS products are manufactured to high-quality standards. For information regarding warranty coverage, terms, and conditions, please refer to the warranty card included with your product or visit the official GAMDIAS website. For technical support, product inquiries, or assistance with troubleshooting, please contact GAMDIAS customer service through their official support channels.

Related Documents - AEOLUS P2-1201

	<p>GAMDIAS AEOLUS P2 1203U ARGB PWM Fan Installation Guide</p> <p>Comprehensive guide for installing and connecting the GAMDIAS AEOLUS P2 1203U ARGB PWM Case & Radiator Fan, including package contents and wiring instructions.</p>
	<p>GAMDIAS AEOLUS P2 1203 ARGB PWM Fan Installation Guide</p> <p>Installation guide for the GAMDIAS AEOLUS P2 1203 ARGB PWM fan, detailing package contents, mounting instructions, and connection diagrams for PC cases and radiators.</p>
	<p>GAMDIAS AEOLUS M2 1204R Elite Case & Radiator Fan Installation Guide</p> <p>A step-by-step installation guide for the GAMDIAS AEOLUS M2 1204R Elite case and radiator fan, detailing package contents, mounting, connections, and remote control functions.</p>
	<p>AEOLUS PET TSAAS ICU: Advanced Veterinary Intensive Care Units Catalog</p> <p>Explore the AEOLUS PET TSAAS ICU series, featuring advanced veterinary intensive care units designed for optimal animal patient care. Discover features, models, and specifications for hospitals and clinics.</p>
	<p>Segotep KL-Aeolus PC Case Installation Guide</p> <p>Comprehensive installation manual for the Segotep KL-Aeolus PC case, detailing steps for fan, liquid cooler, motherboard, PSU, and graphics card installation.</p>
	<p>GAMDIAS ATHENA M3 Mid-Tower PC Case User Manual and Installation Guide</p> <p>Explore the GAMDIAS ATHENA M3 Mid-Tower PC Case with this comprehensive user manual. Learn about safety precautions, package contents, specifications, and step-by-step installation instructions for building your PC.</p>



[\[pdf\]](#) User Manual

AEOLUS P2 1201 QG gamdias User Manuals Gaming Component Fan |||

...

lang: **score:35** filesize: 3.09 M page_count: 2 document date: 2024-01-29