



[Manuals.plus](#) /

> [Haier](#) /

> Haier 355 L 3 Star Frost Free Bottom Mount Double Door Refrigerator HEB-363TS-P User Manual

Haier HEB-363TS-P

Haier 355 L 3 Star Frost Free Bottom Mount Double Door Refrigerator

Model: HEB-363TS-P

INTRODUCTION

This manual provides essential information for the safe and efficient operation of your new Haier 355 L 3 Star Frost Free Bottom Mount Double Door Refrigerator, model HEB-363TS-P. Please read these instructions thoroughly before installation and use, and retain them for future reference.



Front view of the Haier 355 L Bottom Mount Double Door Refrigerator in Inox Steel finish, showcasing its sleek design.

A FRIDGE THAT ADAPTS TO YOUR NEEDS



This image provides a clear view of the refrigerator's interior, including the spacious fresh food section with toughened glass shelves and door racks, and the bottom freezer compartment.

SAFETY INFORMATION

To reduce the risk of fire, electric shock, or injury when using your refrigerator, follow these basic precautions:

- Ensure the refrigerator is properly grounded.
- Do not damage the refrigerant circuit.
- Keep ventilation openings clear of obstruction.
- Do not use mechanical devices or other means to accelerate the defrosting process, other than those recommended by the manufacturer.
- Do not use electrical appliances inside the food storage compartments, unless they are of the type recommended by the manufacturer.
- Unplug the refrigerator before cleaning or performing maintenance.
- This appliance is not intended for use by persons (including children) with reduced physical, sensory or mental capabilities, or lack of experience and knowledge, unless they have been given supervision or

instruction concerning use of the appliance by a person responsible for their safety.

SETUP

Unpacking

Carefully remove all packaging materials, including foam and adhesive tape. Dispose of packaging materials responsibly. Ensure no parts are missing or damaged. If any damage is observed, contact customer service immediately.

Placement

Place the refrigerator on a firm, level surface. Allow adequate space around the appliance for proper ventilation (at least 10 cm at the back and sides, and 30 cm at the top). Avoid direct sunlight or heat sources. The dimensions of the refrigerator are 66.5 cm (Depth) x 62.3 cm (Width) x 173 cm (Height).



Appliance	: Refrigerator
Brand	: Haier
Model/Year	: HEB-363/2025
Type	: Frost Free
Total Volume	: 355 liters



BEE/HAI/04/005/10

*Under test conditions, when tested in accordance with relevant standards
Actual electricity consumption will depend on how the appliance being used.

This image provides a visual representation of the refrigerator's dimensions, including its height of 1730 mm, width of 623 mm, and depth of 665 mm, with a person shown for scale.

Electrical Connection

Connect the refrigerator to a dedicated, properly grounded 230V AC power outlet. Do not use extension cords or adapter plugs. Ensure the power cord is not pinched or damaged.

Initial Operation

After placement and electrical connection, wait for at least 2-4 hours before plugging in the appliance. This allows the refrigerant to settle. Once plugged in, set the desired temperature using the control panel. Allow the refrigerator to run for several hours (e.g., 4-6 hours) to reach optimal cooling temperatures before storing food.

OPERATING INSTRUCTIONS

Control Panel

The refrigerator features an external digital display panel that allows you to monitor and adjust temperature settings without opening the door. Refer to the specific icons and buttons on your panel for detailed functions such as temperature adjustment, mode selection, and special features.



This image highlights the 'Jhukna Mat' design for reduced bending, the energy-efficient Triple Inverter & Dual Fan Technology, the convenient external LED display panel for temperature control, and the large vegetable box for ample storage.

Convertible 14-in-1 Modes

Your Haier refrigerator offers 14 versatile modes to adapt to your storage needs. Use the control panel to select the desired mode:



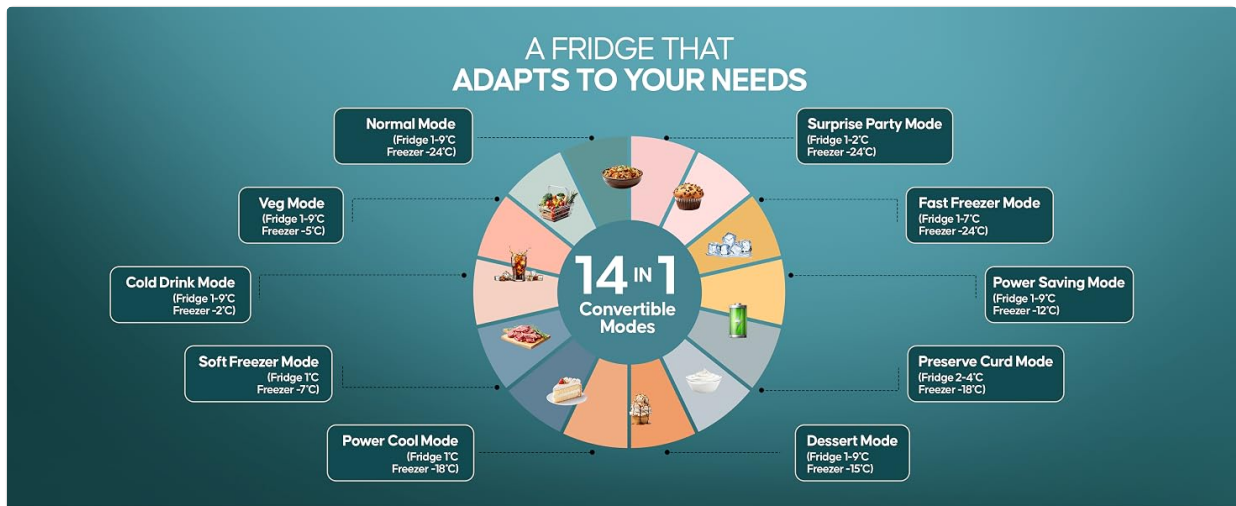
A circular diagram visually explains the 14 versatile operating modes, such as Normal, Veg, Cold Drink, Soft Freezer, Vacation, Power Cool, Power Saving, Surprise Party, Turbo, Holiday, Freezer, Preserve Curd, Snow Beverages, and Dessert modes, along with their respective temperature ranges.

- **Normal Mode:** Fridge 1-9°C, Freezer -24°C. Standard operation for everyday use.
- **Veg Mode:** Fridge 1-9°C, Freezer -5°C. Optimized for vegetable storage.
- **Cold Drink Mode:** Fridge 1-9°C, Freezer -2°C. Ideal for chilling beverages.
- **Soft Freezer Mode:** Fridge 1°C, Freezer -7°C. For items requiring light freezing.
- **Vacation Mode:** Fridge OFF, Freezer -2°C. Saves energy when the fridge compartment is not in use.
- **Power Cool Mode:** Fridge 1°C, Freezer -18°C. Rapid cooling for the fridge compartment.
- **Power Saving Mode:** Fridge 1-9°C, Freezer -12°C. Reduces energy consumption.
- **Surprise Party Mode:** Fridge 1-2°C, Freezer -24°C. Boosts cooling for sudden needs.
- **Turbo Mode:** Fridge 1°C, Freezer -28°C. Provides maximum cooling performance.
- **Holiday Mode:** Fridge OFF, Freezer -24°C. Maintains freezer temperature while fridge is off.
- **Freezer Mode:** Fridge OFF, Freezer -24°C. Converts the entire unit to a freezer.

- **Preserve Curd Mode:** Fridge 2-4°C, Freezer -18°C. Specific setting for curd preservation.
- **Snow Beverages Mode:** Fridge 1-9°C, Freezer -15°C. For beverages requiring colder temperatures.
- **Dessert Mode:** Fridge 1-9°C, Freezer -15°C. Optimal for storing desserts.

Twist Ice Maker

The detachable Twist Ice Maker allows for convenient ice production. Fill the ice trays with water, place them in the freezer, and once frozen, twist the knobs to release ice cubes into the collection bin below.



This image illustrates the detachable Twist Ice Maker for easy ice access, the refrigerator's ability to connect to a home inverter for uninterrupted cooling, the seamless recess handle, and the rapid 1 Hour Icing Technology.

Other Features

- **Triple Inverter & Dual Fan Technology:** Ensures energy efficiency and stable cooling performance with less fluctuation.
- **Auto Connect Home Inverter:** Provides uninterrupted cooling during power cuts by automatically connecting to your home inverter.
- **1 Hour Icing Technology:** Produces ice cubes rapidly, typically within one hour.
- **2x Bigger Vegetable Box:** Offers ample storage space for fresh fruits and vegetables.
- **Anti Bacterial Gasket:** Prevents the entry and build-up of bacteria and fungi, ensuring hygiene.
- **LED Light:** Provides bright and energy-efficient illumination inside the refrigerator.
- **Big Bottle Rack:** Designed to accommodate larger bottles in the door compartment.
- **Recess Handle:** Offers a seamless design and effortless access to the refrigerator compartments.

MAINTENANCE

Cleaning

Regular cleaning helps maintain hygiene and efficiency. Unplug the refrigerator before cleaning. Wipe interior and exterior surfaces with a soft cloth dampened with mild detergent and water. Clean the door gasket regularly to ensure a tight seal. Avoid using abrasive cleaners or solvents.

Defrosting

This is a Frost Free refrigerator, meaning it automatically defrosts the evaporator coils. You do not need to manually defrost the freezer compartment. Ensure the drain hole for defrost water is not blocked.

TROUBLESHOOTING

Before contacting customer service, please refer to the following table for common issues and their solutions:

Problem	Possible Cause	Solution
Refrigerator not cooling	Power supply issue; Temperature setting too high; Door not closed properly; Obstruction of air vents.	Check power connection; Adjust temperature setting; Ensure door is fully closed; Clear any obstructions from air vents.
Loud noise from appliance	Refrigerator not level; Objects vibrating against the unit; Compressor noise (normal).	Adjust leveling feet; Remove objects touching the refrigerator; Normal compressor operation may produce a low hum.
Water leakage inside/outside	Blocked defrost drain; Door gasket not sealing properly; Excessive humidity.	Clear the defrost drain; Check and clean door gasket; Reduce frequency of door opening.
Ice maker not producing ice	Water supply issue; Ice maker switch off; Freezer temperature too high.	Ensure water supply is connected; Check if ice maker is switched on; Lower freezer temperature.

SPECIFICATIONS

Feature	Detail
Model Number	HEB-363TS-P
Capacity	355 Litres (Fresh Food: 270 L, Freezer: 85 L)
Energy Rating	3 Star
Annual Energy Consumption	255 Kilowatt Hours Per Year
Product Dimensions (D x W x H)	66.5D x 62.3W x 173H Centimeters
Item Weight	67 Kilograms
Defrost System Type	Frost Free
Configuration	Bottom Mount, Double Door, Convertible
Compressor Type	Triple Inverter Compressor
Shelf Type	Toughened Glass
Voltage	230.0 Volts
Included Components	1 Unit Refrigerator

The energy label displays the refrigerator's 3-star energy efficiency rating and an annual energy consumption of 255 Kilowatt Hours, highlighting its power-saving capabilities.

WARRANTY AND SUPPORT

Warranty

Your Haier refrigerator comes with a 10-year warranty on the Compressor and fan motor. Please retain your purchase invoice as proof of purchase to avail warranty services. For detailed terms and conditions, refer to the warranty card provided with your appliance or visit the official Haier website.

Customer Support

For any queries, service requests, or technical assistance, please contact Haier customer support. You can find contact details on the official Haier India website or through the customer service number provided in your warranty documentation.