

GAMDIAS AEOLUS P2-1203

GAMDIAS AEOLUS P2-1203 120mm ARGB PWM Fan Instruction Manual

Model: AEOLUS P2-1203

INTRODUCTION

The GAMDIAS AEOLUS P2-1203 ARGB PWM Fan is designed to provide efficient cooling and customizable aesthetics for your PC. This 120mm fan features a 30mm thick frame for enhanced airflow and includes reverse blades for flexible airflow configuration. Its cableless daisy-chain design simplifies installation and cable management. The fan integrates with motherboard RGB systems and GAMDIAS's ZEUS CAST software for lighting and speed control.



Image: Three GAMDIAS AEOLUS P2-1203 ARGB PWM fans connected in a daisy chain, showcasing their vibrant RGB lighting.

KEY FEATURES

- **Extraordinary Cooling with Thicker Fan Frame (30mm):** The 120mm desktop case fan is built with 30mm thickness to ensure superior airflow (75CFM) and cooling performance for your gaming rig or workstation.
- **Easy Installation & Clean Cable Management with Cableless Design:** The 120mm case pc fan comes with a cableless daisy chain design for easy cable management. The computer fan can link up without multiple cables due to a solid interlocking structural design, creating a convenient assembly experience.
- **Customizable RGB Lighting with ZEUS CAST Software:** Designed with dual infinity mirrors and lighting strips on the frame and around the aluminum logo plate, the RGB computer case fan is compatible with both USB AEOLUS BOX II and ZEUS CAST software, allowing users to adjust fan speed and lighting effects.
- **Two Swappable Fan Blades in One Fan Pack:** The 2 swappable pc fan blades (standard and reverse) offer flexibility in customization and performance tuning to match your cooling needs. You get intake and exhaust fan both in one pack and use it as what your gaming system requires.
- **Sleek and Infinity Mirror RGB Case Fan Style:** The case fan is defined with two aluminum logo

plating at the center, embellished by two sleek ARGB strips, and equipped with ARGB infinity mirrors on both sides of the fan case for an aesthetically pleasing view from all angles.

- **Motherboard RGB Support:** The case fan is fully compatible with all RGB motherboard ecosystems for unified lighting effects on the software/App, enhancing the visual appeal of your setup easily.

NEW ERA OF COOLING

The AEOLUS P2-1203 is an advanced cooling solution with innovative features. It comes with a cableless daisy chain design for easy cable management, including swappable fan blades for optimized airflow configuration, and three 30mm thick PWM fans with hydraulic bearings for extreme cooling performance. Designed with dual infinity mirrors and lighting strips on the frame and around the aluminum logo plate, the AEOLUS P2-1203 is compatible with both USB AEOLUS BOX II and ZEUS CAST software, allowing users to adjust fan speed and lighting effects.



Image: Diagram illustrating the advanced cooling features of the AEOLUS P2-1203 fan, highlighting its 30mm thickness and innovative design for optimal airflow.

30MM FRAME THICKNESS

By increasing the thickness of frame to 30mm, it expands the contact surface and offers better air pressure of up to 3.1mmH₂O and airflow up to 74.97 CFM with fan speed ranges between 1000 and 2400 RPM to cool the PC down with quiet operation.



Image: Close-up of a GAMDIAS AEOLUS P2 fan, highlighting its 30mm frame thickness designed for superior air pressure and airflow.

PACKAGE CONTENTS

The GAMDIAS AEOLUS P2-1203 package includes the following components:

- 3 x AEOLUS P2-1203 Fans (with standard blades pre-installed)
- 3 x Reverse Fan Blades
- 1 x Lighting Controller
- 2 x Extension Cables (20cm and 60cm)
- 1 x Motherboard RGB Sync Cable
- Mounting Screws

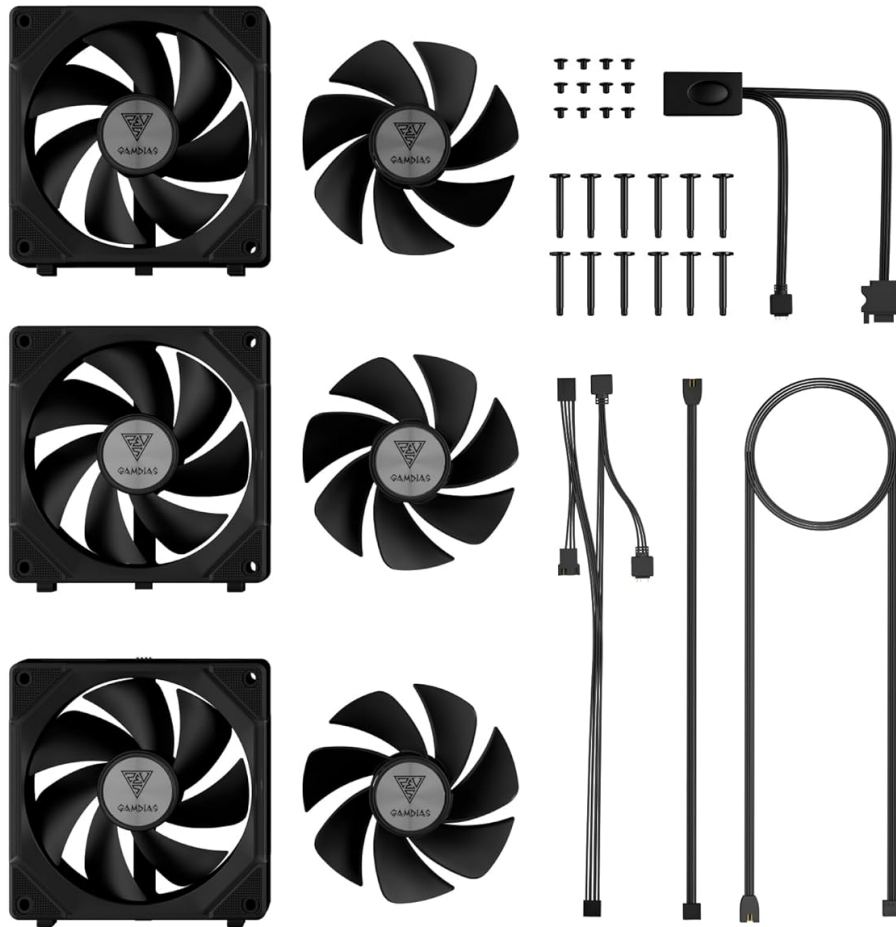


Image: All components included in the GAMDIAS AEOLUS P2-1203 fan pack, including three fans, reverse blades, controller, and various cables.

SETUP AND INSTALLATION

1. Cables Daisy Chain Design

The AEOLUS P2 fans feature a solid interlocking structural design, allowing them to attach directly to each other without individual cables between fans. This simplifies cable management significantly.

CABLELESS DAISY CHAIN DESIGN

Each AEOLUS P2 fan is able to attach together without multiple cables due to a solid interlocking structural design, creating a convenient assembly experience. Daisy-chain clusters of fans and connect them to the USB AEOLUS BOX II to fully customize fan speed and lighting effects through ZEUS CAST software.



Image: Close-up of two GAMDIAS AEOLUS P2 fans demonstrating their interlocking mechanism for a cableless daisy chain connection.

2. Swappable Fan Blades

The AEOLUS P2-1203 includes both standard and reverse fan blades. You can swap the blades to change the airflow direction (intake or exhaust) to optimize your PC's cooling configuration. To swap, carefully remove the existing blade and install the desired one.

SWAPPABLE FAN BLADE INCLUDED

AEOLUS P2-1203 includes a pre-installed standard fan blade and an attached swappable one which offers a flexible option on switching the airflow from intake to exhaust at any time. It is also equipped with hydraulic bearing and PWM functions to generate maximum airflow while minimizing noise and ensuring a long lifespan.



Image: A GAMDIAS AEOLUS P2 fan with its standard blade and a separate reverse fan blade, demonstrating the flexibility of airflow configuration.

AIRFLOW CONFIGURATION

The AEOLUS P2 fans allow you to express creativity in building a PC by replacing swappable fan blades and configuring the airflow direction of PC fans and radiator fans with high airflow and clean appearance.



Image: Diagram illustrating different airflow configurations within a PC case, showing how swappable fan blades can be used for intake or exhaust.

3. Mounting and Placement

Mount the fans to your PC case or radiator using the provided screws. The side tenons can be rotated and pulled out for easier installation, especially when mounting to a radiator, ensuring a clean appearance.

INSTALLATION FLEXIBILITY

The tenons on the side can be easily removed by rotating and pulling them out, providing a neat and tidy outlook while installing the radiator.



Image: Close-up of a GAMDIAS AEOLUS P2 fan highlighting its removable side tenons, which aid in flexible installation and a tidy setup.

4. Connecting Extension Cables

Use the included 20cm and 60cm extension cables to bridge fan clusters or connect to the lighting controller, providing flexibility for cable management in larger cases.

EXTENSION CABLES INCLUDED

The included 20cm and 60cm extension cables provide flexibility in installation, bridging two clusters of fans and simplifying cable management.



Image: Two clusters of GAMDIAS AEOLUS P2 fans connected using extension cables, illustrating how to manage connections across different areas of a PC case.

OPERATION AND CONTROL

1. Lighting Control

The AEOLUS P2-1203 offers up to 30 unique lighting effects. These can be accessed through the included lighting controller or synchronized with your motherboard's RGB software using the provided sync cable modules. Ensure the lighting controller is connected to a power source and your motherboard's ARGB header if using motherboard sync.

GORGEOUS ILLUMINATION

The AEOLUS P2-1203 offers up to 30 unique lighting effects accessible through an included lighting controller or sync lighting via motherboard manufacturer's sync software through included cable modules.

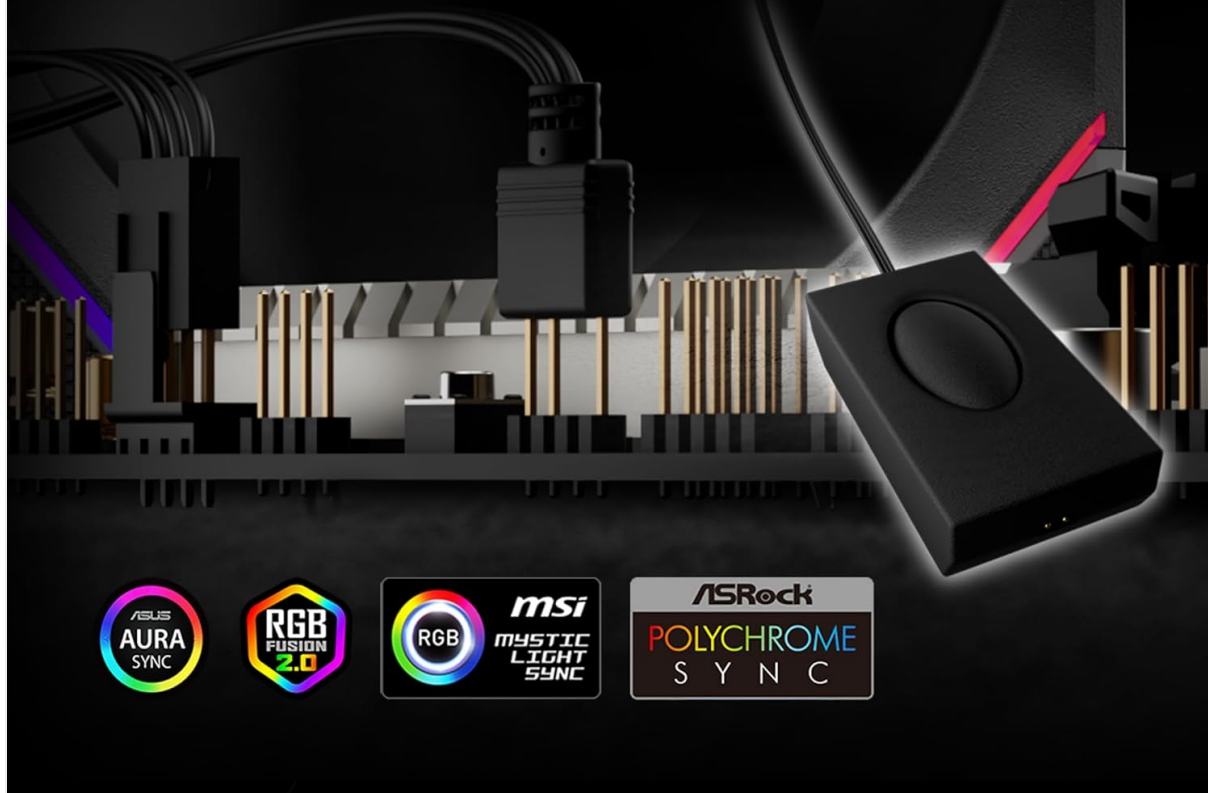


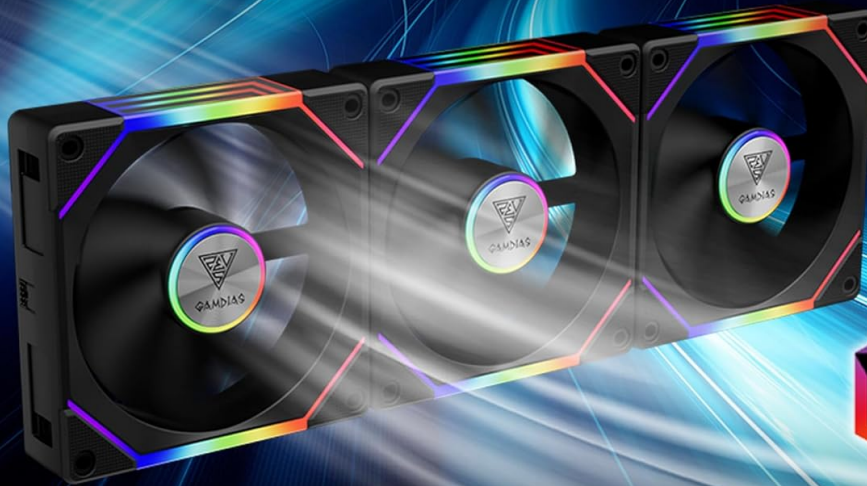
Image: Diagram illustrating the connection of the GAMDIAS AEOLUS P2-1203 lighting controller to a motherboard for RGB synchronization, showing compatibility with various motherboard RGB software.

2. Fan Speed and Ecosystem Integration

For advanced control over fan speed and lighting effects, connect the fans to the USB AEOLUS BOX II (if purchased separately or included in other kits) and utilize the ZEUS CAST software. This software allows real-time monitoring of cooling performance and adjustment of fan speed based on the temperature.

GAMDIAS ECOSYSTEM

The AEOLUS P2-1203 is compatible with USB AEOLUS BOX II and ZEUS CAST software. Users can customize the lighting effects including the interior and exterior strips, brightness, and lighting speed via ZEUS CAST software when the fans are connected to the USB AEOLUS BOX II. ZEUS CAST software allows adjustment to the fan speed based on the temperature and provides real-time status to monitor cooling performance.



**Compatible with
USB AEOLUS BOX II and ZEUS CAST Software**

Image: GAMDIAS AEOLUS P2 fans connected to a USB AEOLUS BOX II, demonstrating integration with the GAMDIAS ecosystem and ZEUS CAST software for comprehensive control.

MAINTENANCE

To ensure optimal performance and longevity of your GAMDIAS AEOLUS P2-1203 fans, regular maintenance is recommended:

- **Cleaning:** Periodically clean the fan blades and frame to remove dust accumulation. Use a soft brush or compressed air. Ensure the PC is powered off before cleaning.
- **Inspection:** Check for any obstructions around the fan blades or unusual noises during operation.

TROUBLESHOOTING

If you encounter issues with your GAMDIAS AEOLUS P2-1203 fans, consider the following:

- **Fans Not Spinning:**
 - Ensure all power cables are securely connected to the fans and the power supply.
 - Verify that the lighting controller (if used) is properly connected and receiving power.
 - Check fan headers on the motherboard for proper connection.

- **RGB Lighting Not Working:**
 - Confirm the ARGB sync cable is correctly connected to your motherboard's 5V ARGB header.
 - Check if the lighting controller is functioning correctly.
 - Ensure your motherboard's RGB software is installed and configured to control the fans.
 - If using ZEUS CAST software, ensure the USB AEOLUS BOX II is properly connected.
- **Unusual Noise:**
 - Inspect fan blades for any obstructions (e.g., loose cables).
 - Ensure fans are securely mounted and not vibrating against the case.

If issues persist, please contact GAMDIAS customer support for further assistance.

SPECIFICATIONS

Feature	Detail
Model Number	AEOLUS P2-1203
Fan Dimensions	120mm x 120mm x 30mm
Rotational Speed	1000 - 2400 RPM
Airflow	Up to 75 CFM
Air Pressure	Up to 3.1 mmH2O
Noise Level	20 dB(A)
Power Connector	4-Pin PWM
Voltage	12 Volts
Wattage	1.92 watts
Bearing Type	Hydraulic Bearing
Material	Aluminum (frame accents)
Compatible Devices	Desktop PCs

WARRANTY AND SUPPORT

Specific warranty details for the GAMDIAS AEOLUS P2-1203 are typically provided with the product packaging or available on the official GAMDIAS website. Please refer to these resources for comprehensive warranty information.

For technical support, troubleshooting assistance, or warranty claims, please visit the official GAMDIAS support page or contact their customer service department. Contact information can usually be found on the GAMDIAS website or in the product documentation.

You can visit the GAMDIAS store on Amazon for more products:[GAMDIAS Store](#)

Related Documents - AEOLUS P2-1203

	<p>GAMDIAS AEOLUS P2 1203U ARGB PWM Fan Installation Guide</p> <p>Comprehensive guide for installing and connecting the GAMDIAS AEOLUS P2 1203U ARGB PWM Case & Radiator Fan, including package contents and wiring instructions.</p>
	<p>GAMDIAS AEOLUS P2 1203 ARGB PWM Fan Installation Guide</p> <p>Installation guide for the GAMDIAS AEOLUS P2 1203 ARGB PWM fan, detailing package contents, mounting instructions, and connection diagrams for PC cases and radiators.</p>
	<p>GAMDIAS AEOLUS M2-1203 LITE PC Case & Radiator Fan Installation Guide</p> <p>Step-by-step installation guide for the GAMDIAS AEOLUS M2-1203 LITE PC Case & Radiator Fan, detailing package contents, mounting, power connection, and RGB lighting control via button or motherboard sync.</p>
	<p>GAMDIAS AEOLUS M3-1201 Case & Radiator Fan Installation Guide</p> <p>Step-by-step installation guide for the GAMDIAS AEOLUS M3-1201 Case & Radiator Fan, covering package contents, installation steps, and RGB lighting control methods.</p>
	<p>GAMDIAS AEOLUS M2 1204R Elite Case & Radiator Fan Installation Guide</p> <p>A step-by-step installation guide for the GAMDIAS AEOLUS M2 1204R Elite case and radiator fan, detailing package contents, mounting, connections, and remote control functions.</p>
	<p>GAMDIAS CHIONE P3 360U QG All-In-One CPU Liquid Cooler Installation Guide</p> <p>Detailed installation guide for the GAMDIAS CHIONE P3 360U QG All-In-One CPU Liquid Cooler, covering package contents, thermal paste application, and mounting for Intel and AMD platforms, along with AEOLUS Box setup.</p>



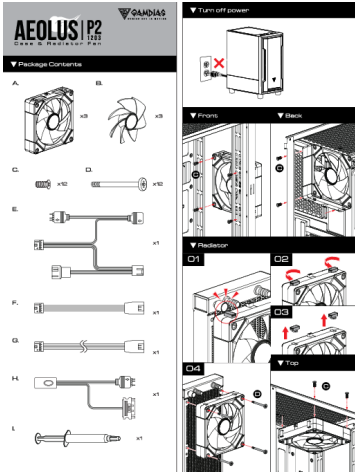
[pdf]

Uputstvo za upotrebu EN GAMDIAS Aeolus P2 1203 BL ventilator PC uputstvo en gamdias aeolus p2 bl pc 6797792b3df60api tehnoteka rs 2025 01 6797792b3df60 |||
<https://tehnoteka.rs> Uputstvo za upotrebu EN GAMDIAS **Aeolus P2-1203 BL** ventilator za PC Tehnoteka je online destinacija za upore ivanje cena i karakteristika bele tehnike, potro a ke elektronike i IT ure aja kod trgovinskih lanaca i internet prodavnica u Srbiji. Na a stranica vam omogu ava d...
lang:hr score:51 filesize: 3.36 M page_count: 4 document date: 2025-01-27



[pdf]

Uputstvo za upotrebu EN GAMDIAS Aeolus P2 1203 WH ventilator PC uputstvo en gamdias aeolus p2 wh pc 6797780b2c2e5api tehnoteka rs 2025 01 6797780b2c2e5 |||
<https://tehnoteka.rs> Uputstvo za upotrebu EN GAMDIAS **Aeolus P2-1203 WH** ventilator za PC Tehnoteka je online destinacija za upore ivanje cena i karakteristika bele tehnike, potro a ke elektronike i IT ure aja kod trgovinskih lanaca i internet prodavnica u Srbiji. Na a stranica vam omogu ava d...
lang:hr score:51 filesize: 3.18 M page_count: 4 document date: 2025-01-27



[GAMDIAS AEOLUS P2 1203 ARGB PWM Fan Installation Guide](#)

Installation guide for the GAMDIAS AEOLUS P2 1203 ARGB PWM fan, detailing package contents, mounting instructions, and connection diagrams for PC cases and radiators.
lang:hr score:36 filesize: 3.12 M page_count: 2 document date: 2024-01-29

