

G.SKILL GC-AWGW1-MD1

G.SKILL MD1 Mid-Tower ATX PC Case User Manual

Model: GC-AWGW1-MD1

1. INTRODUCTION

This manual provides detailed instructions for the installation, operation, and maintenance of your G.SKILL MD1 Mid-Tower ATX PC Case. Please read this manual thoroughly before beginning assembly to ensure proper setup and to maximize the lifespan of your components.

The G.SKILL MD1 is designed for compatibility with ATX, mATX, and mini-ITX motherboards, offering a versatile foundation for various PC builds. It features a 4mm tempered glass side panel and front/top mesh panels for optimal airflow and component visibility.

2. PRODUCT FEATURES

- **ATX PC Case:** Compatible with ATX, mATX, and mini-ITX motherboard sizes.
- **Tempered Glass Side Panel:** 4mm thick tempered glass for clear internal component visibility.
- **Front/Top Mesh Design:** Engineered for enhanced airflow and cooling performance.
- **Radiator Support:** Supports up to a 360mm AIO radiator for advanced cooling solutions.
- **GPU Length Support:** Accommodates graphics cards up to 404mm in length.
- **Storage Drive Bays:** Includes 2x 2.5" bays and 2x 3.5" bays for ample storage.
- **Tool-less Side Panel:** Hinge design for easy access and maintenance.
- **Front Panel I/O:** 2x USB 3.0, 1x USB Type-C, 1x Audio-Out, 1x Mic-In for convenient connectivity.

3. PACKAGE CONTENTS

Please verify that all components listed below are present in your package:

- G.SKILL MD1 Mid-Tower ATX PC Case
- Accessory Box (screws, cable ties, standoffs)
- User Manual (this document)

4. SETUP AND INSTALLATION

4.1. Preparing the Case

Before installing components, ensure the case is placed on a stable, flat surface. Remove the tempered glass side panel by gently pulling it open from the rear hinge, then lifting it off. The opposite side panel can be removed by unscrewing the thumb screws at the rear and sliding the panel backward.



Figure 1: Exploded view showing the removal of the front panel, top panel, and side panels.

4.2. Motherboard Installation

Install the appropriate standoffs for your motherboard size (ATX, mATX, or mini-ITX). Carefully place your motherboard into the case, aligning it with the standoffs, and secure it with screws. Ensure the I/O shield is properly seated before installing the motherboard.

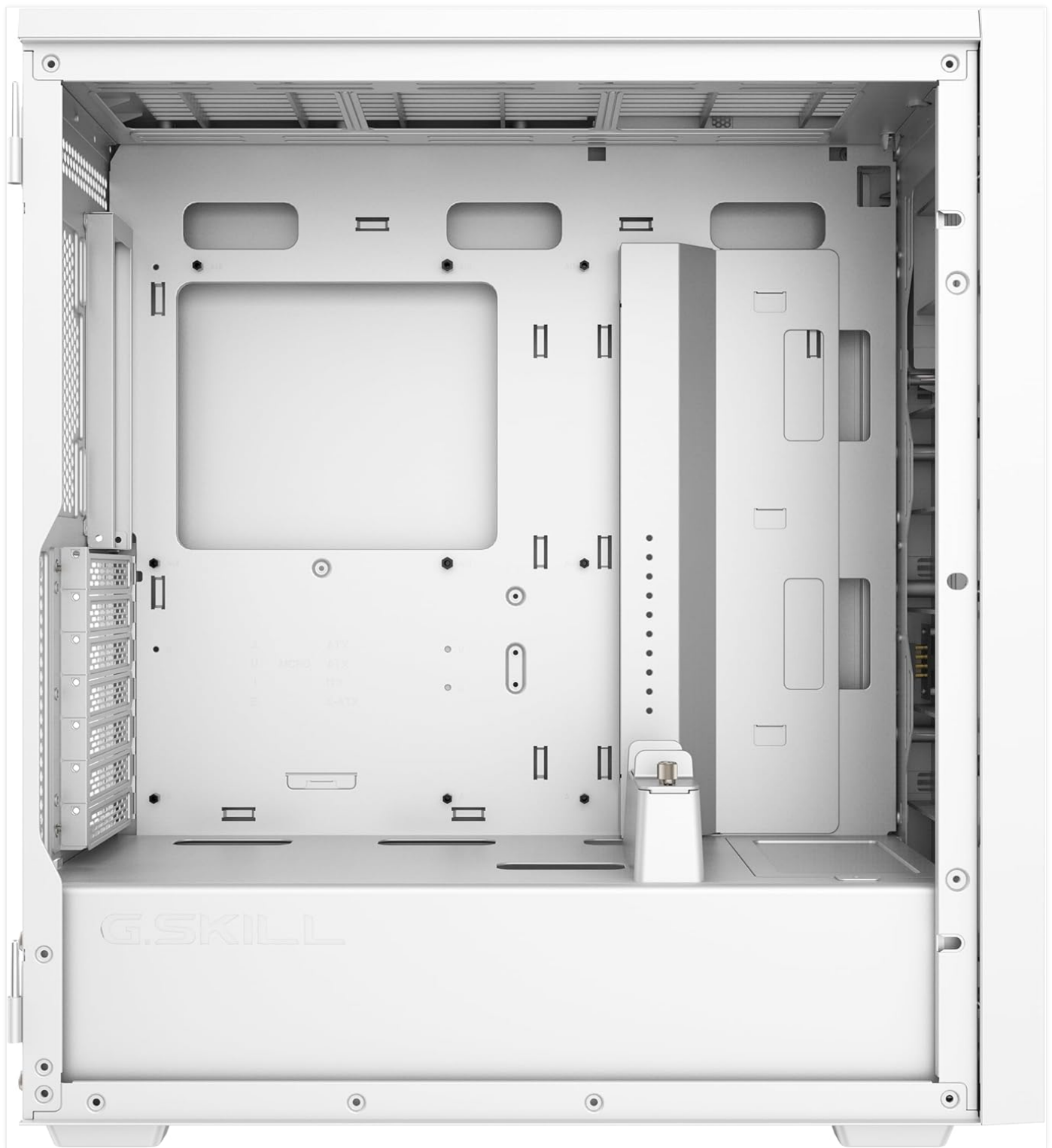


Figure 2: Main internal compartment of the G.SKILL MD1 case, illustrating the motherboard mounting area.

4.3. Storage Drive Installation

The case supports 2x 2.5" drives and 2x 3.5" drives. Locate the drive bays and secure your SSDs or HDDs using the provided screws. Ensure proper cable management for power and data connections.

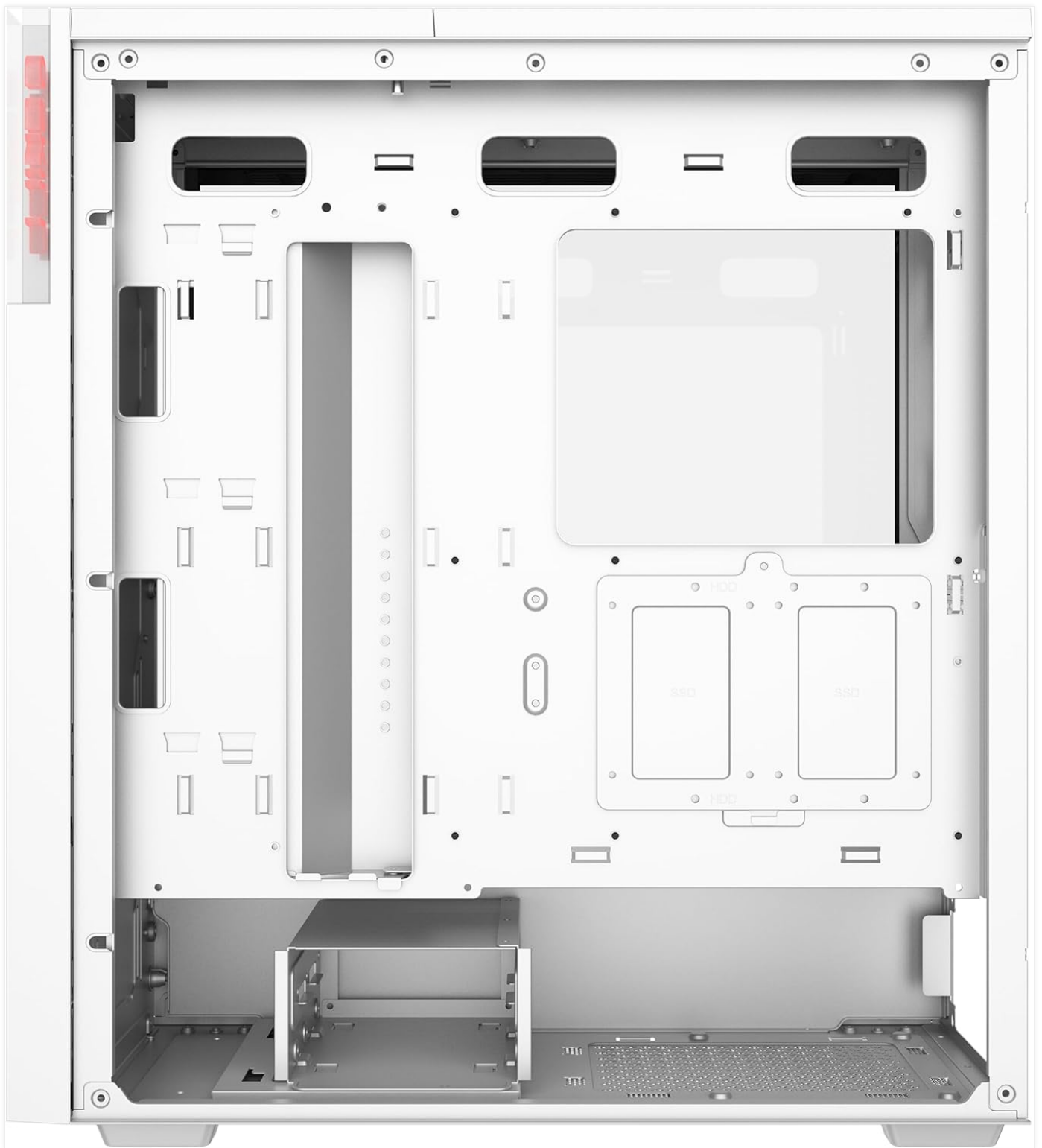


Figure 3: Rear internal view of the G.SKILL MD1 case, highlighting the 2.5" and 3.5" drive bays behind the motherboard tray.

4.4. Graphics Card (GPU) Installation

Install your graphics card into the appropriate PCIe slot on your motherboard. The case supports GPUs up to 404mm in length. Secure the GPU with the retention clip and any necessary screws. An included GPU support bracket can be used to prevent sag for longer cards.



Figure 4: Internal view of the G.SKILL MD1 case with a graphics card installed, demonstrating the use of the GPU support bracket.

4.5. Front Panel I/O Connections

Connect the front panel cables (USB 3.0, USB Type-C, Audio-Out, Mic-In, Power, Reset) to their corresponding headers on your motherboard. Refer to your motherboard manual for exact header locations.

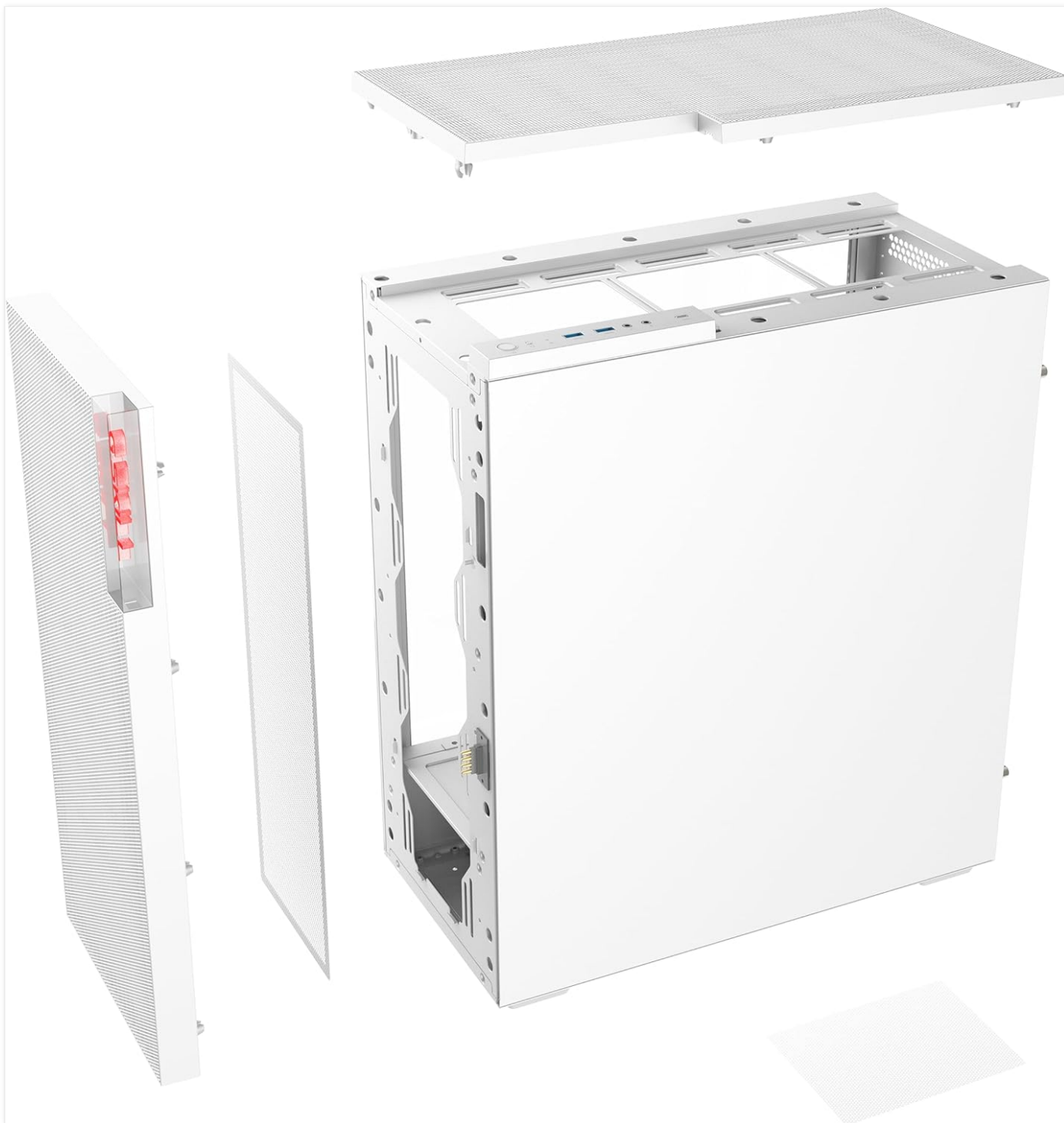
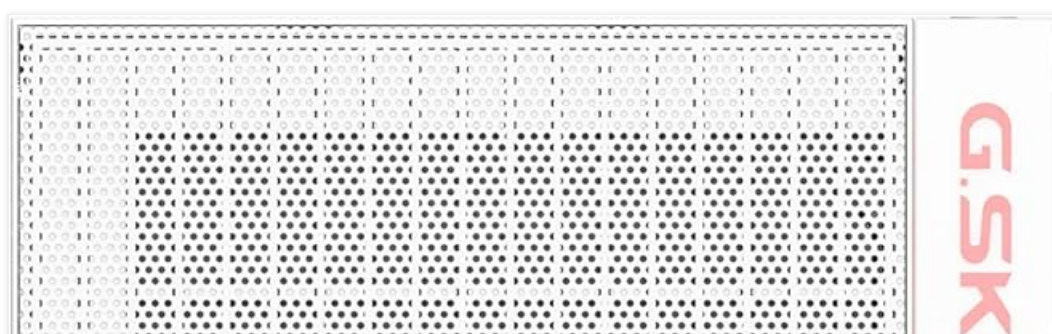


Figure 5: Close-up of the G.SKILL MD1 case's front panel I/O, showing USB 3.0, USB Type-C, Audio-Out, Mic-In, Power, and Reset buttons.

5. OPERATING INSTRUCTIONS

Once all components are securely installed and connected, replace the side panels. Connect your power supply to a wall outlet and press the power button on the front panel to start your system.



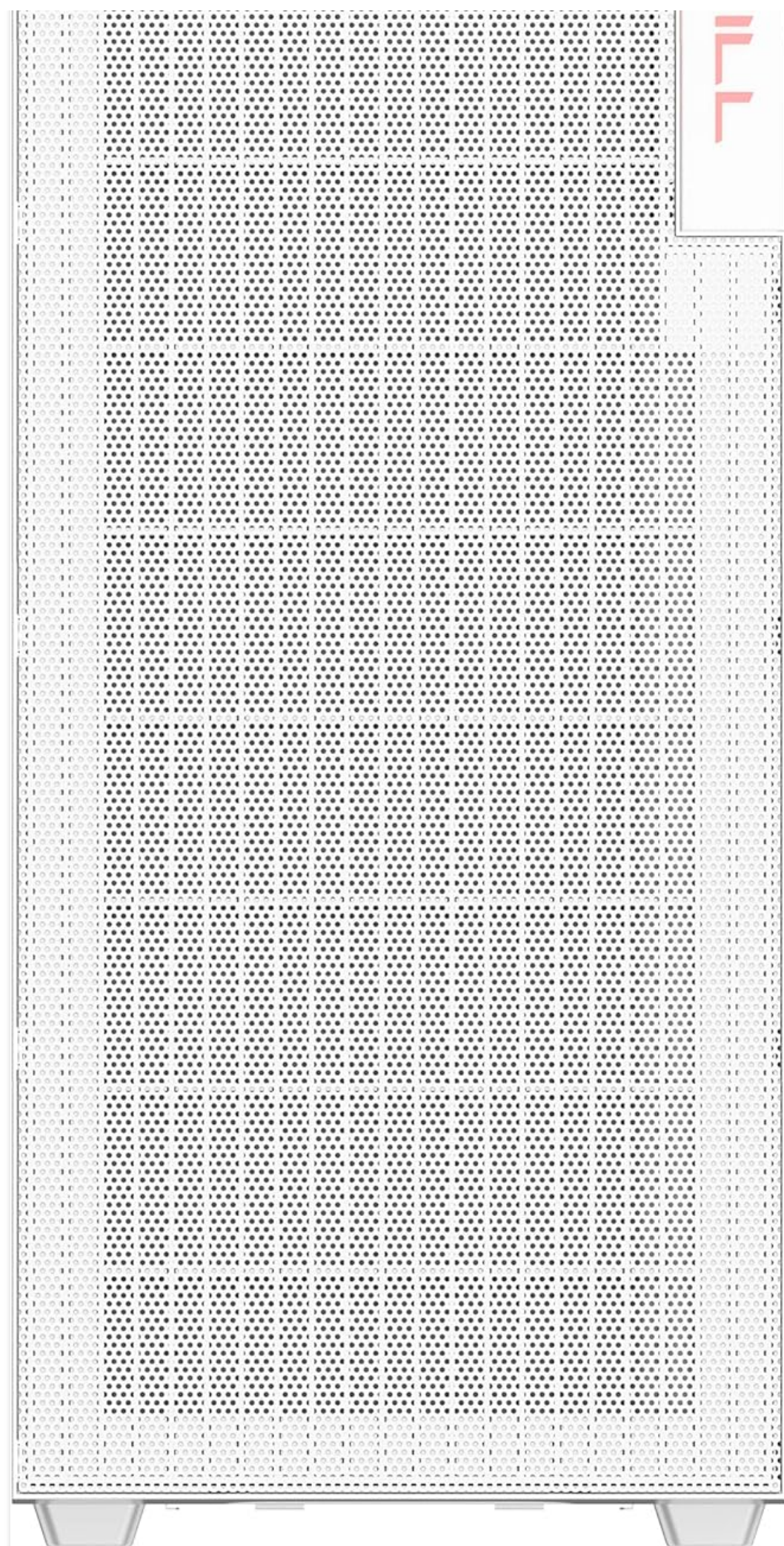


Figure 6: Front view of the G.SKILL MD1 case, showcasing the mesh panel and G.SKILL branding.

6. MAINTENANCE

Regular maintenance helps ensure optimal performance and longevity of your PC components. The G.SKILL MD1 case features mesh panels that act as dust filters.

6.1. Dust Filter Cleaning

Periodically clean the front and top mesh panels to prevent dust buildup, which can restrict airflow and lead to overheating. These panels can be removed for easy cleaning with compressed air or a soft brush.

6.2. Interior Cleaning

With the side panels removed, use compressed air to clear dust from internal components such as CPU coolers, GPU fans, and power supply vents. Ensure the system is powered off and unplugged before performing any interior cleaning.

7. TROUBLESHOOTING

If you encounter issues with your PC build within the G.SKILL MD1 case, consider the following common troubleshooting steps:

- **System Not Powering On:**
 - Check all power connections, including the 24-pin ATX, 8-pin CPU, and GPU power cables.
 - Ensure the power supply switch is in the 'ON' position.
 - Verify front panel power button connection to the motherboard.
- **Overheating Components:**
 - Clean dust filters and internal components.
 - Ensure case fans are properly installed and functioning, directing airflow efficiently.
 - Verify CPU cooler and GPU cooler are correctly seated and making good contact.
- **No Display Output:**
 - Ensure the monitor cable is connected to the graphics card, not the motherboard (if a dedicated GPU is installed).
 - Reseat the graphics card and RAM modules.

8. SPECIFICATIONS

Feature	Detail
Brand	G.SKILL
Model Number	GC-AWGW1-MD1
Case Type	Mid Tower
Motherboard Compatibility	ATX, mATX, mini-ITX
Side Panel	4mm Tempered Glass (Hinged)

Front Panel	Mesh Design
Top Panel	Mesh Design
Max GPU Length	404mm
Radiator Support	Up to 360mm (AIO)
2.5" Drive Bays	2
3.5" Drive Bays	2
Front I/O Ports	2x USB 3.0, 1x USB Type-C, 1x Audio-Out, 1x Mic-In
Dimensions (LxWxH)	19.84 x 8.7 x 17.7 inches
Item Weight	19.91 pounds (9.05 kg)



Figure 7: Diagram illustrating the dimensions of the G.SKILL MD1 Mid-Tower ATX PC Case.

9. WARRANTY AND SUPPORT

For warranty information and technical support, please refer to the official G.SKILL website or contact their customer service directly. Keep your proof of purchase for warranty claims.

G.SKILL Official Website: www.gskill.com

