

JOY worker JW-GSD26H-35PB

JOY worker 35-Inch Standing Desk Converter User Manual

Model: JW-GSD26H-35PB

INTRODUCTION

The JOY worker 35-Inch Standing Desk Converter is designed to transform your existing desk into a sit-stand workstation, promoting a healthier and more dynamic work environment. This manual provides essential information for the safe and effective setup, operation, and maintenance of your desk converter.

SAFETY INFORMATION

Please read all safety instructions before assembly and use. Failure to follow these instructions may result in product damage or personal injury.

- **Weight Capacity:** Do not exceed the recommended weight limits. The top tier supports up to 28.6 lbs (12.97 kg), and the lower keyboard tray supports up to 4.4 lbs.
- **Stability:** Ensure the desk converter is placed on a stable, flat surface. Avoid placing it near edges where it could tip over.
- **Moving Parts:** Keep hands and fingers clear of moving parts during height adjustment to prevent pinching or injury.
- **Assembly:** Follow assembly instructions carefully. Do not use power tools for assembly unless specified, as this may overtighten screws and cause damage.
- **Cable Management:** Ensure all cables are properly routed and have enough slack to accommodate height adjustments without tension.

PACKAGE CONTENTS

Verify that all components are present before beginning assembly. If any parts are missing or damaged, please contact customer support.

- Pre-assembled main desk converter unit

- Removable keyboard tray
- Connection board for keyboard tray
- Screws (E & F) for assembly
- Hex key (if required)

SETUP INSTRUCTIONS

The JOY worker Standing Desk Converter requires minimal assembly. Follow these steps to set up your new workstation.

Step 1: Prepare the Main Unit

Place the main desk converter unit upside down on a soft, clean surface to protect it from scratches. Carefully cut any cable ties securing internal components.

Step 2: Install the Connection Board

Align the connection board with the pre-drilled holes on the underside of the main unit. Secure it using Screw F. Ensure it is firmly attached.



Image: Installation steps for the desk converter, highlighting the attachment of the keyboard tray.

Step 3: Attach the Keyboard Tray

Position the removable keyboard tray onto the connection board, aligning the holes. Secure it using Screw E. Ensure the tray is stable and level.

Quite Easy Installation

Removable keyboard tray with 3 screws on each side



Image: Detailed view of attaching the keyboard tray to the desk converter using screws.

Step 4: Place on Desk

Carefully flip the assembled desk converter upright and place it on your existing desk. Ensure it is centered and stable.

Installation Video

Your browser does not support the video tag.

Video: A step-by-step guide demonstrating the installation process of the JOY worker standing desk converter.

OPERATING INSTRUCTIONS

The JOY worker Standing Desk Converter features a gas spring system for smooth and effortless height adjustments.

Adjusting Height

To raise the desk, simply squeeze the handle located on the side of the unit and gently lift the tabletop to your desired standing height. To lower, squeeze the handle and apply slight downward pressure. The gas spring mechanism will assist in a smooth transition.



EASILY ADJUSTABLE

From sitting to standing in seconds

Image: A user effortlessly adjusting the desk converter's height, demonstrating the smooth gas spring mechanism.



Image: Visual representation of the gas spring height adjustment, showing minimum 4.9 inches and maximum 19.3 inches.

Dual-Tier Design

The converter features a dual-tier design. The upper tier is for monitors and laptops, while the lower tier provides space for your keyboard and mouse. Both tiers move in sync during height adjustments.



Vertical Frame Design

Vertical Adjustments

No side-to-side or back-and-forth sway

Image: The vertical frame design ensures stable height adjustments without lateral movement.

Operation Video

Your browser does not support the video tag.

Video: Demonstration of the dual-tier standing desk converter in action, showcasing its smooth height adjustment.

FEATURES AND SPECIFICATIONS

The JOY worker Standing Desk Converter is designed with user convenience and durability in mind.

- **Multifunctional Slot:** A built-in slot on the top tier provides a convenient space for holding smartphones or tablets.
- **Anti-Slip Pads:** Equipped with anti-slip pads on the base to ensure stability and prevent movement on your desk surface.
- **Keyboard Tray Baffle:** The keyboard tray includes a baffle to prevent your keyboard and mouse from sliding off.
- **Monitor Mount Compatibility:** Reserved holes allow for easy installation of monitor mounts (grommet or clamp installation).

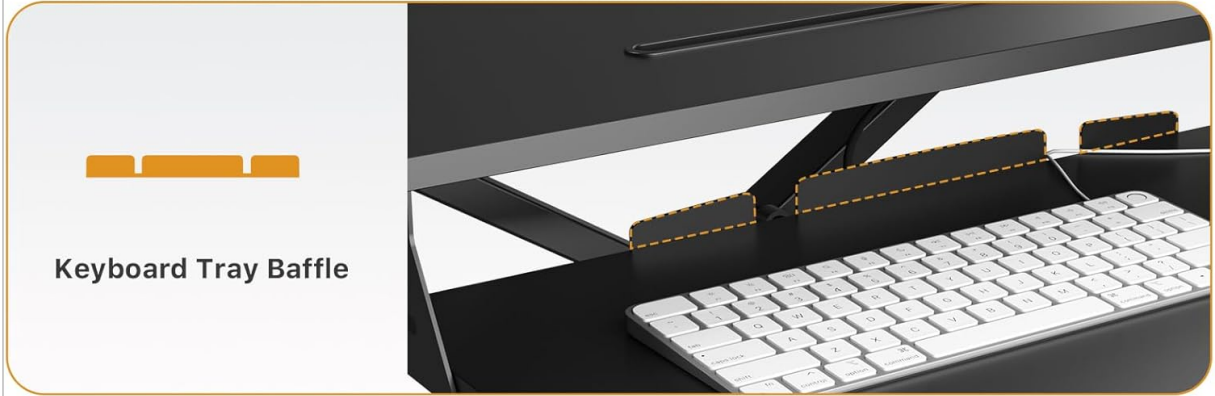
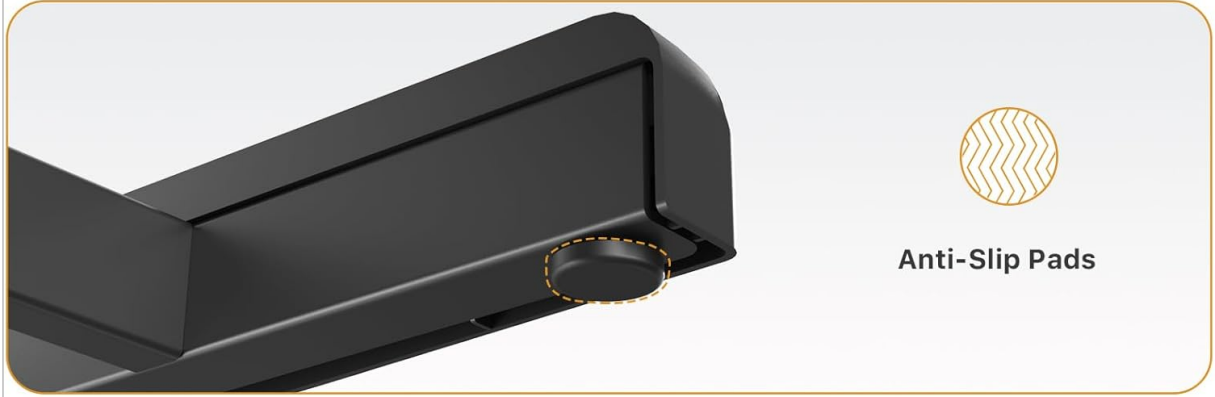
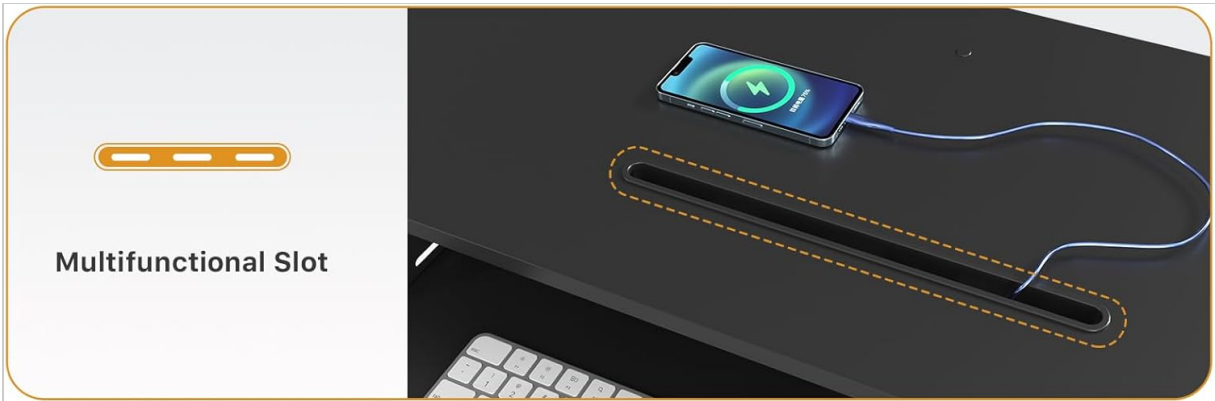


Image: Close-up view of the multifunctional slot, anti-slip pads, and keyboard tray baffle.

Reserved Hole for Monitor Mount



Grommet Installation



Clamp Installation

Image: Illustration of the reserved holes for monitor mount installation, supporting grommet and clamp options.

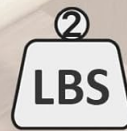
Product Specifications

Feature	Specification
Model Number	JW-GSD26H-35PB
Product Dimensions (D x W x H)	34.6"D x 15.7"W x 19.3"H
Maximum Height	19.3 Inches
Minimum Height	4.9 Inches
Desktop Load Capacity	28.6 lbs (12.97 kg)
Keyboard Tray Load Capacity	4.4 lbs
Material	Engineered Wood (Particle Board), Steel Frame
Color	Black
Weight	26.5 Pounds

Product Dimension



28.6 lbs
Desktop Load



4.4 lbs
Keyboard Load

Image: Key product dimensions and load capacities for the desktop and keyboard tray.

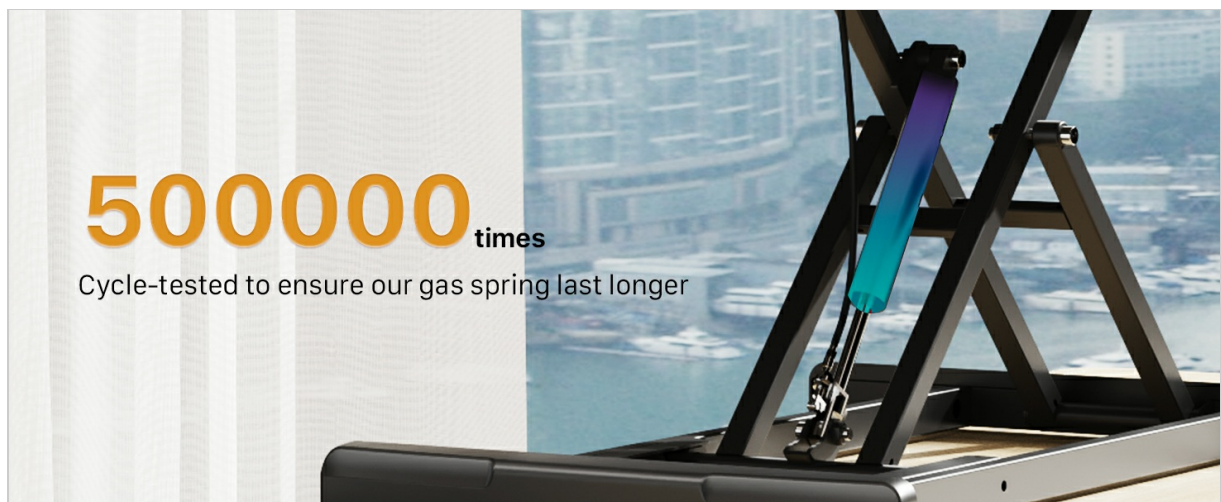


Image: Visual guide for compatible desk dimensions, showing the converter's footprint when lowered and raised.

MAINTENANCE

To ensure the longevity and optimal performance of your JOY worker Standing Desk Converter, follow these simple maintenance guidelines:

- **Cleaning:** Wipe surfaces with a soft, damp cloth. Avoid harsh chemicals or abrasive cleaners that could damage the finish.
- **Inspection:** Periodically check all screws and connections to ensure they are tight. Retighten if necessary.
- **Movement:** Keep the gas spring mechanism free from obstructions and debris to ensure smooth operation.

TROUBLESHOOTING

If you encounter any issues with your desk converter, please refer to the following common solutions:

- **Difficulty Adjusting Height:** Ensure the handle is fully squeezed. Check for any obstructions in the lifting mechanism. If the unit feels stiff, ensure it is not overloaded.
- **Wobbling:** Verify that the desk converter is placed on a flat, stable surface. Check that all assembly screws are securely tightened.
- **Keyboard Tray Instability:** Ensure the keyboard tray is correctly installed and all screws (E) are tightened.

If problems persist, please contact JOY worker customer support for further assistance.

WARRANTY AND SUPPORT

The JOY worker Standing Desk Converter comes with a limited warranty. For specific warranty details, claims, or technical support, please refer to the product packaging or contact JOY worker customer service directly. Keep your purchase receipt for warranty validation.