



[Manuals.plus](#) /

› [Adamson](#) /

› Adamson B10 Bed Cooling System Instruction Manual

Adamson B10

Adamson B10 Bed Cooling System Instruction Manual

Model: B10

INTRODUCTION

The Adamson B10 Bed Cooling System is designed to provide a comfortable and cool sleeping environment. Utilizing an evaporative cooling system, it helps reduce night sweats and other sleep-related discomforts by circulating cooled water through a mattress pad. This system is energy-efficient and designed for safe, effective operation.

The B10 features a 100% cotton mattress pad for maximum comfort and uses a water-cooled system without electromagnetic waves or wires in the pad, ensuring safety. It significantly reduces energy consumption compared to traditional air conditioning units.

WATER COOLING SYSTEM

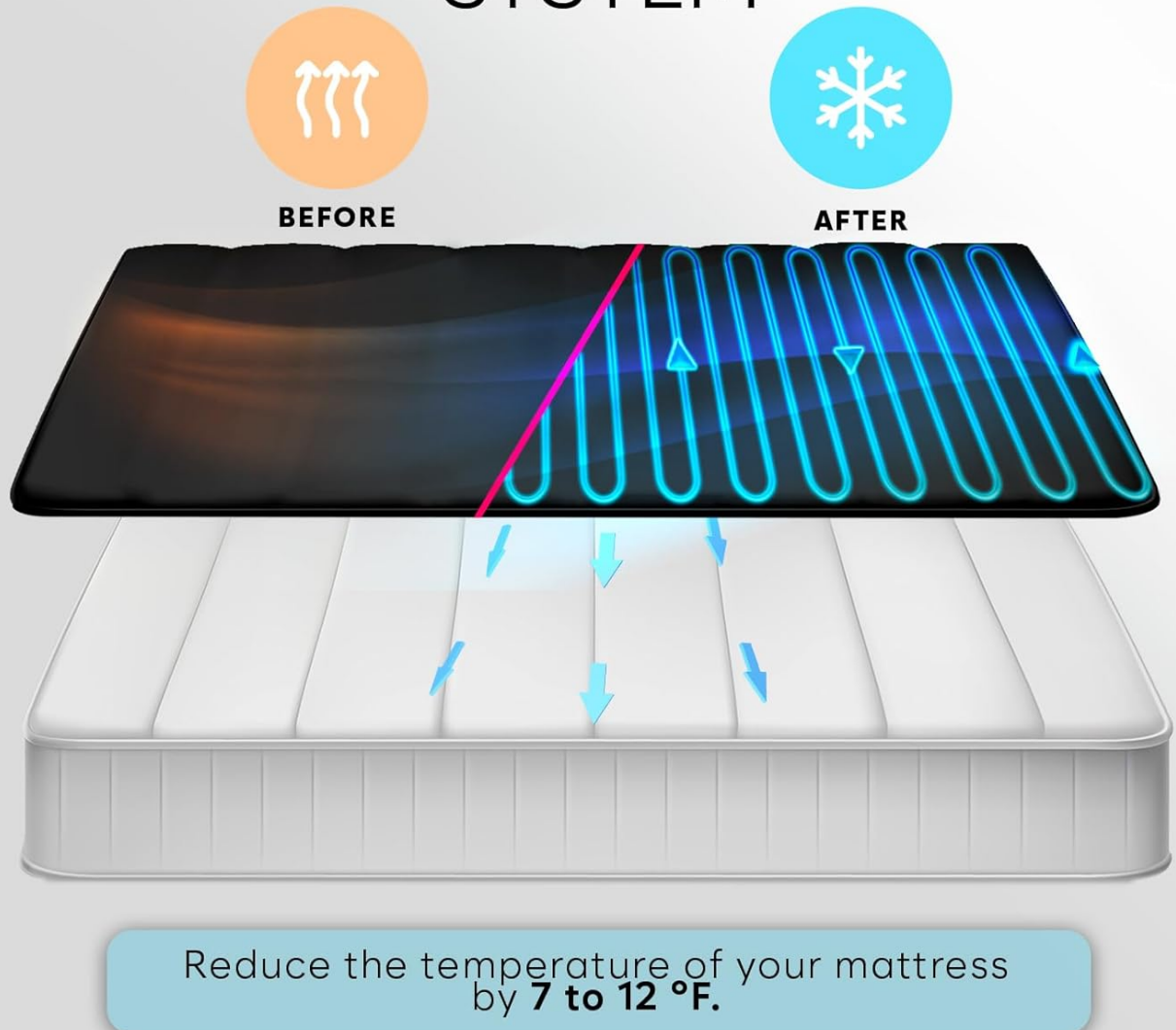


Figure 1: Water Cooling System Overview. This image illustrates how the Adamson B10 circulates cooled water through the mattress pad to reduce the mattress temperature by 7 to 12°F.

SAFETY INFORMATION

- Read all instructions thoroughly before installation and operation.
- Ensure the unit is placed on a stable, level surface.
- Use only clean, distilled water in the reservoir to prevent mineral buildup and ensure optimal performance.
- Do not submerge the control unit in water or other liquids.
- Keep the unit away from direct heat sources and open flames.
- Do not attempt to open or repair the unit yourself. Contact customer service for assistance.
- Keep out of reach of children and pets.

PACKAGE CONTENTS

Verify that all components are present in the package:

- Adamson B10 Control Unit
- 100% Cotton Mattress Pad (Twin size: 75" L x 39" B)
- Remote Control
- Hoses for water circulation
- Instruction Manual (this document)

SETUP INSTRUCTIONS

Follow these steps to set up your Adamson B10 Bed Cooling System:

1. **Place the Mattress Pad:** Lay the Adamson B10 mattress pad directly over your existing mattress. Ensure it is centered and lies flat.
2. **Position the Control Unit:** Place the Adamson B10 control unit on a stable surface next to your bed, ensuring it is below the level of the mattress pad for proper water circulation.
3. **Connect the Hoses:** Connect the two hoses from the mattress pad to the corresponding ports on the Adamson B10 control unit. Ensure connections are secure to prevent leaks.
4. **Fill the Water Tank:** Open the water reservoir cap on the control unit. Carefully fill the tank with clean, distilled water. Do not overfill. Close the cap securely.
5. **Power On:** Plug the power cord into a suitable electrical outlet. The unit is now ready for operation.

SAVE MONEY



USES **100X**
LESS ENERGY
THAN AN AC

Adamson.

Figure 2: Easy Setup Steps. This image visually guides you through the simple three-step setup process for the Adamson B10 Bed Cooling System.

VERSATILE USE



Twin bed



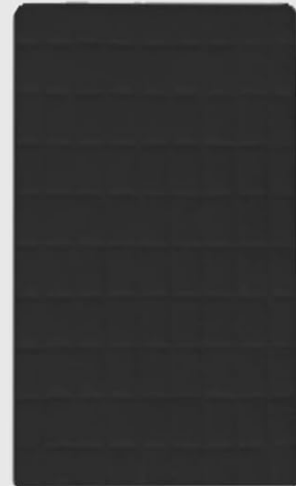
King/Queen bed



King/Queen bed



39"



75"

Figure 3: Versatile Use. The Adamson B10 mattress pad is designed for versatile use, fitting Twin beds and covering half of King/Queen beds for individual cooling.

OPERATING INSTRUCTIONS

The Adamson B10 Bed Cooling System can be operated using the control unit or the included wireless remote control.

Using the Remote Control

The wireless remote control allows you to adjust settings conveniently from your bed.

- **Power Button:** Press to turn the unit ON or OFF.
- **Mode Button:** Cycle through the available cooling modes (e.g., continuous, intermittent). The B10 offers 4 distinct modes.
- **Fan Speed Button:** Adjust the fan speed to control the intensity of cooling.
- **Timer Button:** Set a timer for automatic shutdown (if available).

WIRELESS REMOTE

At your fingertips!

Conveniently control your cooler without having to get up from the comfort of your bed

Figure 4: Wireless Remote Control. Control your Adamson B10 system effortlessly with the wireless remote, allowing adjustments without leaving your bed.

Cooling Performance

The system is designed to reduce your mattress temperature by 7 to 12°F, providing significant relief for hot sleepers. The cooling effect is achieved through the circulation of chilled water.

LAB TESTED FOR IMPROVED EFFICIENCY

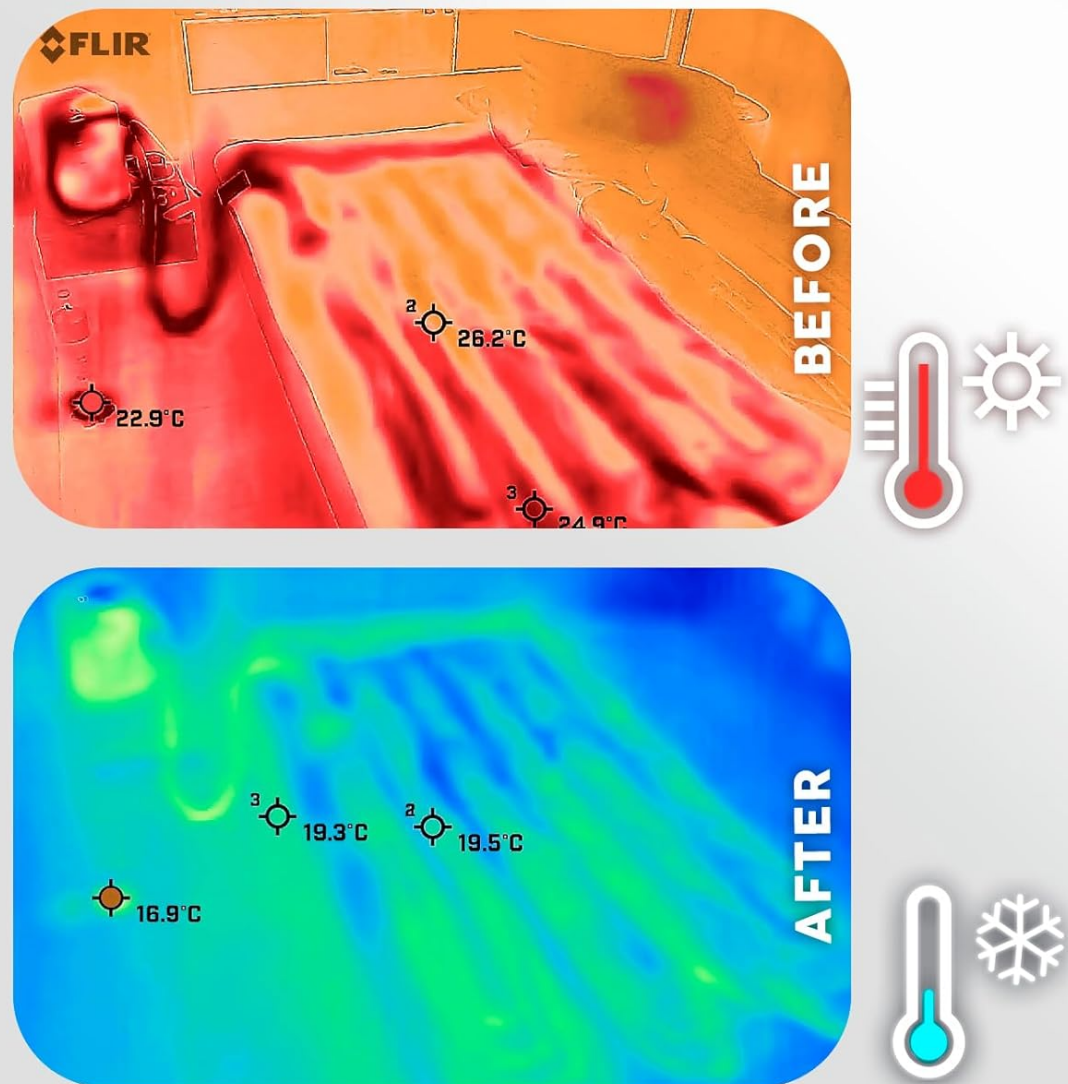


Figure 5: Lab Tested Efficiency. Thermal images demonstrate the significant temperature reduction achieved by the Adamson B10 system, confirming its cooling efficiency.

MAINTENANCE

Regular maintenance ensures the longevity and optimal performance of your Adamson B10 Bed Cooling System.

- **Water Replacement:** Regularly check the water level in the reservoir and refill with distilled water as needed. It is recommended to replace the water completely every 2-4 weeks to prevent algae or mineral buildup.
- **Cleaning the Reservoir:** Periodically clean the water reservoir with a mild detergent and rinse thoroughly. Ensure no soap residue remains before refilling.
- **Cleaning the Mattress Pad:** The 100% cotton mattress pad can be spot cleaned as needed. Refer to the care label on the pad for specific washing instructions if a deeper clean is required.
- **Unit Cleaning:** Wipe the exterior of the control unit with a soft, damp cloth. Do not use abrasive cleaners or immerse the unit in water.

- **Hose Inspection:** Periodically inspect the hoses for any signs of wear, kinks, or leaks. Ensure they are securely connected.

TROUBLESHOOTING

If you encounter issues with your Adamson B10, refer to the following common problems and solutions. If the problem persists, contact customer support.

Problem	Possible Cause	Solution
Unit does not turn on.	No power, loose connection.	Ensure power cord is securely plugged into both the unit and the outlet. Check if the outlet is functional.
No cooling effect.	Low water level, air in system, incorrect mode.	Check water level and refill if necessary. Ensure hoses are properly connected. Cycle through modes to ensure cooling is active.
Water leakage.	Loose hose connection, damaged hose/pad.	Check all hose connections for tightness. Inspect hoses and mattress pad for any visible damage. If damage is found, contact customer service.
Unusual noise from unit.	Low water level, obstruction in fan.	Check water level. Ensure the unit is on a stable surface. Inspect for any foreign objects near the fan.

SPECIFICATIONS

Feature	Detail
Brand	Adamson
Model Name	Adamson B10
Material	100% Cotton (Mattress Pad)
Size	Twin (75" L x 39" B)
Mounting Type	Freestanding
Color	Midnight Black
Control Type	Remote Control
Wattage	8 watts
Airflow Capacity	80 Cubic Feet Per Minute
Operating Mode	Automatic
Smart Home Compatibility	Not compatible with smart home systems
Included Components	Mattress pad, cooling system
GTIN	03701152106028
Part Number	ADB106028

SOFT & COMFY PAD



Made in **100% Cotton**, our mattress pad is way more comfortable than the usual PVC mattress toppers.

Figure 6: Soft and Comfortable Pad. The Adamson B10 mattress pad is made from 100% cotton, providing a soft and comfortable sleeping surface.

EASY TO USE

- 1 Place the B10's topper over your mattress.
- 2 Connect the hoses to the B10's unit
- 3 Fill the water tank, and you're ready to sleep!



Figure 7: Energy Efficiency. The Adamson B10 is highly energy-efficient, consuming significantly less power than traditional air conditioning, leading to cost savings.

WARRANTY AND SUPPORT

The Adamson B10 Bed Cooling System comes with a **5-year warranty**, ensuring peace of mind regarding product quality and performance.

For any questions, technical assistance, or warranty claims, our dedicated **24/7 customer service** team is available to help. Please refer to the contact information provided on the product packaging or our official website for support.

INVEST IN YOUR HEALTH

Helps reduce:

- Night awakenings
- Lack of sleep
- Sweatiness
- Restlessness



Improves:

- + Energy
- + Mood
- + Sharpness
- + Deep Sleep



Figure 8: Invest in Your Health. The Adamson B10 contributes to improved sleep quality, reducing common sleep disturbances and enhancing overall well-being.