



Manuals.plus /

› EPOMAKER /

› EPOMAKER DynaTab 75X Wireless Gaming Keyboard User Manual

EPOMAKER DynaTab 75X

EPOMAKER DynaTab 75X Wireless Gaming Keyboard User Manual

Model: DynaTab 75X

[Instructions](#) [Customization](#) [Overview](#) [Setup](#) [Operating](#)
[Maintenance](#) [Troubleshooting](#) [Specifications](#) [Warranty & Support](#)

1. PRODUCT OVERVIEW

The EPOMAKER DynaTab 75X is a wireless gaming keyboard designed for enhanced customization and performance. It features a unique RGB Dot-Matrix LED screen, hot-swappable mechanical switches, and versatile tri-mode connectivity (Bluetooth, 2.4G wireless, USB-C wired). Its gasket-mounted design and advanced padding ensure a consistent and stable typing experience.

What's in the Box

- EPOMAKER DynaTab 75X Wireless Gaming Keyboard
- USB-C Cable
- Keycap Puller
- Switch Puller (if not integrated with keycap puller)
- 2.4Ghz Wireless Receiver (stored within the keyboard)
- User Manual (this document)

EPOMAKER

DYNATAB 75X

Mechanical Gaming Keyboard



75% US Layout



Gasket & Foams



10000mAh Battery



2A Fast-Charging



WIN & mac & Android



BT & 2.4GHZ & USB-C



Dot-Matrix Screen



Dynamic RGB Light



South-Facing LEDs



Durable PBT Keycap



Hot Swappable



Programming Software

Image: EPOMAKER DynaTab 75X keyboard showcasing its main features including the Dot-Matrix screen, 75% layout, gasket mount, 10000mAh battery, 2A fast charging, multi-OS compatibility, Bluetooth & 2.4G & USB-C, south-facing LEDs, durable PBT keycaps, hot-swappable switches, and programming software.

Your browser does not support the video tag.

Video: An unboxing video of the DynaTab 75X wireless gaming keyboard, demonstrating the contents and initial appearance of the product.

2. SETUP GUIDE

2.1 Initial Charging

Before first use, fully charge the keyboard using the provided USB-C cable. Connect the cable to the keyboard's USB-C port and to a power source (e.g., computer USB port, USB wall adapter). The Dot-Matrix screen may indicate charging status.

2.2 Connecting the Keyboard

The DynaTab 75X supports three connection modes: USB-C wired, 2.4Ghz wireless, and Bluetooth. Use the mode selector switch located near the Dot-Matrix screen to choose your preferred connection type.

2.2.1 USB-C Wired Connection

1. Ensure the mode selector switch is set to "USB-C" (usually indicated by a cable icon).
2. Connect the provided USB-C cable to the keyboard and to your computer's USB port.
3. The keyboard will be automatically recognized by your operating system.

2.2.2 2.4Ghz Wireless Connection

1. Locate the 2.4Ghz wireless receiver, typically stored in a compartment on the keyboard.
2. Plug the 2.4Ghz receiver into an available USB port on your computer.
3. Set the mode selector switch on the keyboard to "2.4G" (usually indicated by a wireless icon).
4. The keyboard should connect automatically. If not, press **Fn + 4** to initiate pairing.

Your browser does not support the video tag.

Video: Demonstration of Bluetooth and 2.4G wireless connectivity for the DynaTab 75X keyboard.



Image: Visual guide illustrating the three connectivity options: 2.4GHz wireless, Bluetooth, and USB-C wired, along with the 10000mAh battery and 2A fast charging capability.

2.2.3 Bluetooth Connection

The keyboard can connect to up to 3 Bluetooth devices simultaneously.

1. Set the mode selector switch on the keyboard to "Bluetooth" (usually indicated by a Bluetooth icon).
2. Press and hold **Fn + 1**, **Fn + 2**, or **Fn + 3** for 3-5 seconds to enter pairing mode for the desired slot. The Dot-Matrix screen or an indicator light will flash.
3. On your device (PC, laptop, tablet, smartphone), open Bluetooth settings and search for "DynaTab 75X".
4. Select the keyboard to pair. Once connected, the indicator will stop flashing.
5. To switch between paired Bluetooth devices, press **Fn + 1**, **Fn + 2**, or **Fn + 3** briefly.

3. OPERATING INSTRUCTIONS

3.1 Dot-Matrix LED Screen Functions

The integrated Dot-Matrix LED screen can display various information and animations. Use the dedicated button next to the screen to cycle through different display modes or customize via software.

- **Default Displays:** Time, Date, CPU usage, connection status, greeting phrases.
- **Custom Animations:** Upload custom GIF animations or design patterns using the EPOMAKER software.



Image: Examples of the Dot-Matrix RGB LED screen displaying various information such as screen light effects, real-time text, date & time, CPU usage, and greeting phrases.

Your browser does not support the video tag.

Video: A demonstration of uploading custom GIF animations to the DynaTab 75X keyboard's Dot-Matrix screen.

3.2 RGB Backlighting Control

The DynaTab 75X features vibrant 16.8 million color RGB backlighting. You can control lighting effects directly from the keyboard or through the custom software.

- **Fn + \ |**: Cycle through different RGB lighting effects.
- **Fn + ↑ / ↓**: Adjust backlight brightness.
- **Fn + ← / →**: Adjust backlight speed/direction.
- **Fn + Del**: Change backlight color (for static modes).

Your browser does not support the video tag.

Video: A showcase of various RGB backlight effects on the DynaTab 75X keyboard.

3.3 Multimedia and Function Keys

The keyboard's function row (F1-F12) can be accessed by pressing the **Fn** key in combination with the desired F-key. Specific multimedia functions may be pre-programmed or customizable via software.

Common Fn Key Combinations

Combination	Function
Fn + F1	Media Player
Fn + F2	Volume Down
Fn + F3	Volume Up
Fn + F4	Mute
Fn + F5	Previous Track
Fn + F6	Next Track
Fn + F7	Play/Pause
Fn + F8	Stop
Fn + Z/X/C	Switch between Layer 1/2/3 (for custom keymaps)

4. CUSTOMIZATION

The EPOMAKER DynaTab 75X offers extensive customization options through its dedicated software.

4.1 Software Installation

Download the latest EPOMAKER software from the official EPOMAKER website. Install it on your computer to access advanced customization features.

4.2 Key Remapping and Macros

The software allows you to remap individual keys and create complex macros. You can assign different functions to keys across multiple layers, which can be switched using **Fn + Z/X/C**.

4.3 Dot-Matrix Screen Customization

Use the software to design, draw, and upload custom patterns or GIF animations to the Dot-Matrix LED screen. You can also configure the display of real-time information.

4.4 RGB Lighting Customization

Beyond the onboard controls, the software provides granular control over RGB lighting effects, colors, and patterns, allowing for a truly personalized aesthetic.

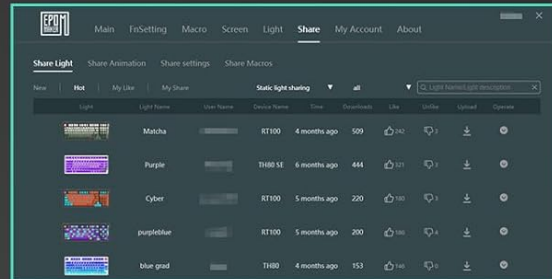
CUSTOMIZABLE SOFTWARE

Programming Keys on Three Layers with Onboard Memory FN+Z/X/C to Switch between Layer 1/2/3

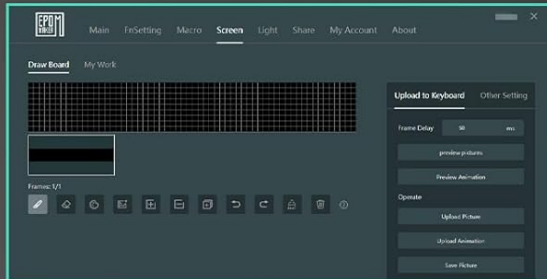
BackLight



Community



Screen



Sleep



Remap



Support Firmware

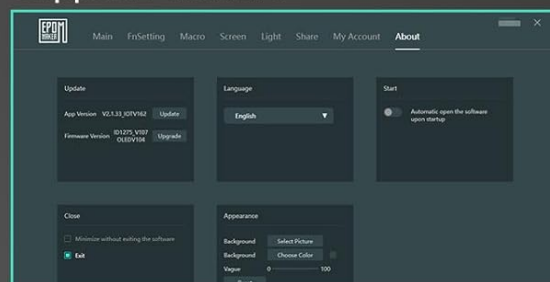


Image: Screenshots of the EPOMAKER custom software, showing options for backlight, screen, sleep settings, key remapping, and firmware support.

5. MAINTENANCE

5.1 Cleaning the Keyboard

- Disconnect the keyboard from all power sources before cleaning.
- Use a soft, lint-free cloth slightly dampened with water or a mild cleaning solution to wipe the keycaps and chassis.
- For deeper cleaning, use the provided keycap puller to remove keycaps and clean underneath with compressed air or a small brush.
- Avoid excessive moisture and harsh chemicals.

5.2 Hot-Swappable Switches

The DynaTab 75X features hot-swappable switch sockets, allowing you to change mechanical switches without soldering.

1. Use the provided switch puller to carefully remove the existing switch. Grip the switch firmly and pull straight up.
2. Align the pins of the new 3-pin or 5-pin mechanical switch with the holes on the PCB.
3. Gently press the new switch into place until it clicks. Ensure it is seated properly and functions correctly.



Image: Illustration of the hot-swappable feature, showing how to remove and insert mechanical switches on the DynaTab 75X keyboard.

Your browser does not support the video tag.

Video: A close-up view of the side-printed PBT keycaps on the DynaTab 75X keyboard.

6. TROUBLESHOOTING

6.1 Keyboard Not Responding

- **Check Connection:** Ensure the USB-C cable is securely connected, or the 2.4Ghz receiver is plugged in, or Bluetooth is properly paired.
- **Battery Level:** Charge the keyboard fully. A low battery can cause intermittent connectivity.
- **Mode Switch:** Verify the mode selector switch is set to the correct connection type (USB-C, 2.4G, or BT).
- **Restart:** Try restarting your computer and the keyboard.

6.2 RGB Lighting Not Working/Incorrect

- **Brightness:** Adjust brightness using **Fn + ↑**.
- **Software Conflict:** If using third-party lighting software, ensure it's not conflicting with the EPOMAKER software or onboard controls.
- **Reset:** Perform a factory reset (refer to software or advanced settings for this option, if available).

6.3 Dot-Matrix Screen Issues

- **Software:** Ensure the EPOMAKER software is running and updated.
- **Display Mode:** Cycle through display modes using the dedicated button.
- **Firmware:** Check for and install any available firmware updates for the keyboard.

7. PRODUCT SPECIFICATIONS

Feature	Detail
Model Name	EPOMAKER DynaTab 75X
Connectivity	Bluetooth, 2.4Ghz Wireless, USB-C Wired
Layout	75% (84 Keys) QWERTY
Switch Type	Linear (Wisteria Linear Switch)
Hot-Swappable	Yes, 3/5-pin mechanical switches
Backlighting	16.8M RGB, South-facing LEDs
Special Features	Custom Dot-Matrix RGB LED Screen, Gasket-Mounted, Customizable Software, Ergonomic
Battery Capacity	10000mAh with 2A Fast Charging
Keycap Material	PBT (Side-Printed, Gradient)
Compatible Devices	Gaming Console, Laptop, PC, Tablet
Material	Plastic
Dimensions (Approx.)	34.5cm (W) x 18.1cm (D) x 2.2-4.1cm (H)



Image: Diagram showing the approximate dimensions of the EPOMAKER DynaTab 75X keyboard.

8. WARRANTY & SUPPORT

8.1 Warranty Information

The EPOMAKER DynaTab 75X Wireless Gaming Keyboard comes with a **1 Year Warranty** from the date of purchase. This warranty covers manufacturing defects and malfunctions under normal use. It does not cover damage caused by misuse, accidents, unauthorized modifications, or normal wear and tear.

Please retain your proof of purchase for warranty claims.

8.2 Customer Support

For technical assistance, warranty claims, or general inquiries, please contact EPOMAKER customer support through their official website or the retailer where you purchased the product.

Official EPOMAKER Website: www.epomaker.com

