

Jaspertronics W401-LAMP

Jaspertronics Original Lamp & Housing for Optoma W401 Projector - Instruction Manual

1. INTRODUCTION

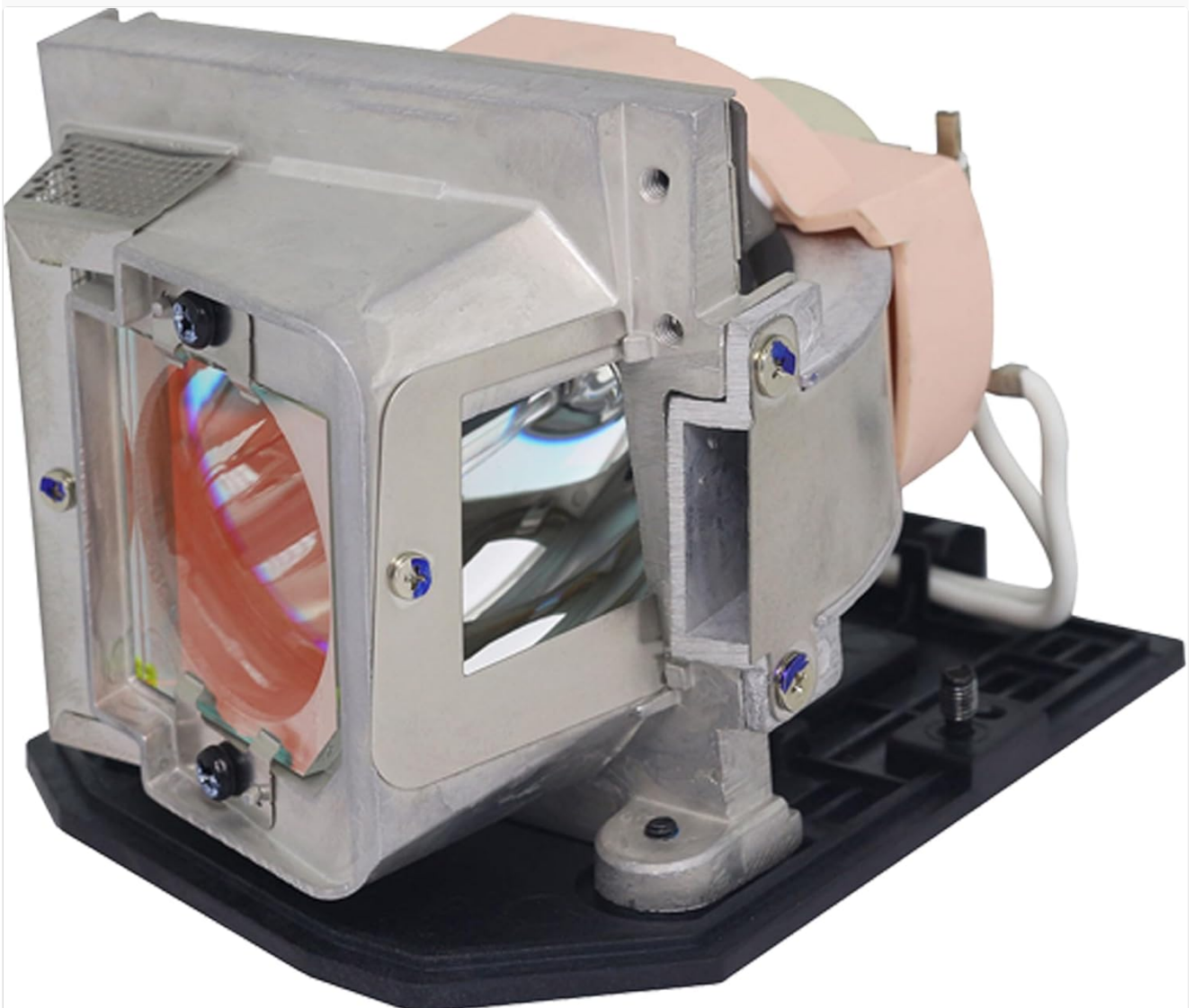
This instruction manual provides essential information for the safe and effective installation, operation, and maintenance of your Jaspertronics Original Lamp & Housing for the Optoma W401 Projector. Please read this manual thoroughly before proceeding with installation or use to ensure optimal performance and longevity of your product.

2. PRODUCT OVERVIEW

The Jaspertronics Original Lamp & Housing is a high-quality replacement module designed to restore your projector's performance to its original specifications. It features an original specification lamp, ensuring full lifespan, brightness, and clarity. The module is engineered for flicker-free operation, is lightweight, and offers long-lasting performance.



Image 2.1: Front view of the Jaspertronics Original Lamp & Housing module.



3. COMPATIBILITY

This lamp module is compatible with the following Optoma projector models:

- Optoma W401
- Optoma EX763
- Optoma OPX4015
- Optoma OPX4515
- Optoma OPX4565
- Optoma SP8TE01GC01
- Optoma X401
- Optoma BL-FP280H

4. SAFETY INFORMATION

Always observe the following safety precautions when handling projector lamps:

- **Power Off:** Always disconnect the projector from the power outlet and allow it to cool down completely before attempting any lamp replacement.
- **High Temperature:** Projector lamps operate at high temperatures. Do not touch the lamp immediately after use.
- **Fragile Component:** The lamp bulb is made of glass and can break if dropped or mishandled. Handle with care.
- **Eye Protection:** Avoid looking directly at the lamp when it is operating, as intense light can cause eye damage.
- **Disposal:** Dispose of old lamps according to local regulations, as they may contain mercury.

5. INSTALLATION INSTRUCTIONS

Follow these steps to safely replace the lamp module in your Optoma projector:

1. **Prepare the Projector:** Ensure the projector is turned off and unplugged from the power source. Allow it to cool for at least 30 minutes.
2. **Locate Lamp Cover:** Identify the lamp cover on your projector. This is typically secured by one or more screws.
3. **Remove Lamp Cover:** Unscrew the screw(s) on the lamp cover and carefully remove the cover.
4. **Loosen Lamp Screws:** Loosen the screw(s) that secure the old lamp module to the projector chassis. Do not remove them completely unless specified by your projector's manual.
5. **Remove Old Lamp:** Gently pull the old lamp module straight out of the projector. Avoid touching the glass part of the lamp.



Image 5.1: Illustration of a hand carefully removing an old lamp module from a projector.

6. **Insert New Lamp:** Carefully insert the new Jaspertronics lamp module into the projector, ensuring it is seated firmly and correctly. Do not force it.
7. **Secure New Lamp:** Tighten the screw(s) to secure the new lamp module in place.
8. **Replace Lamp Cover:** Reattach the lamp cover and secure it with its screw(s).
9. **Reset Lamp Timer:** Plug the projector back in and turn it on. Navigate to the projector's menu to reset the lamp timer. Refer to your projector's user manual for specific instructions on resetting the lamp timer.

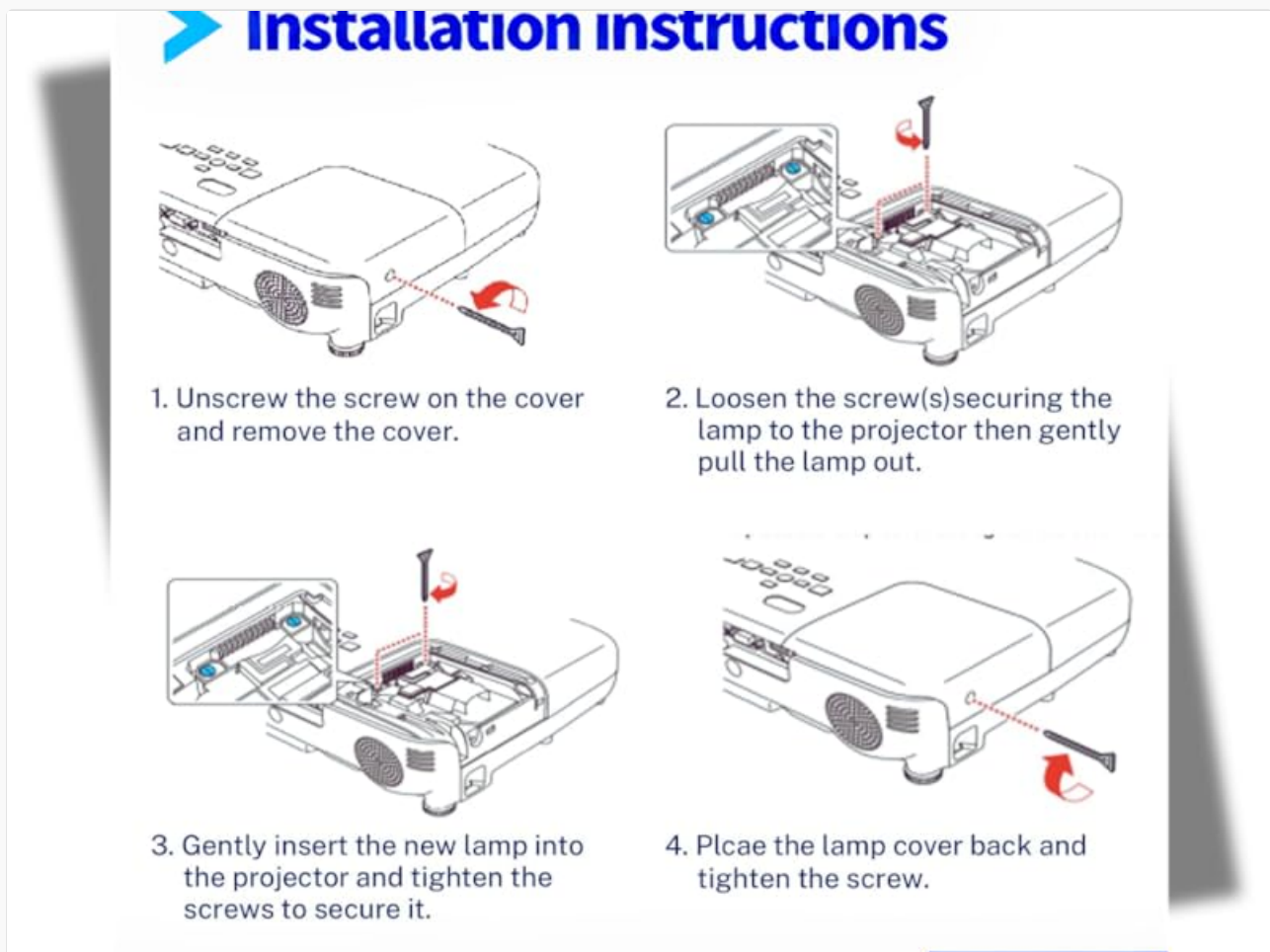


Image 5.2: Step-by-step diagram illustrating the lamp replacement process: 1. Unscrew cover, 2. Loosen lamp screws and pull out, 3. Insert new lamp and tighten, 4. Replace cover and tighten.

6. OPERATING INSTRUCTIONS

After successful installation, operate your projector as usual. The new lamp will provide optimal brightness and color performance. Allow the projector to warm up for a few minutes after turning it on and cool down completely before unplugging or moving it.

7. MAINTENANCE

To maximize the lifespan of your lamp and projector:

- **Air Filter Cleaning:** Regularly clean or replace the projector's air filter to ensure proper ventilation and prevent overheating, which can shorten lamp life.
- **Cool-down Cycle:** Always allow the projector to complete its cool-down cycle before unplugging it. Interrupting this cycle can damage the lamp.
- **Avoid Rapid On/Off:** Frequent turning on and off of the projector can reduce lamp life.
- **Environmental Conditions:** Operate the projector in a clean, dust-free environment with adequate ventilation.

8. TROUBLESHOOTING

If you encounter issues after lamp replacement, consider the following:

- **No Image/Dim Image:** Ensure the lamp module is fully seated and secured. Check if the lamp timer was reset.
- **Lamp Warning Light:** If the lamp warning light persists after replacement, ensure the lamp timer was reset correctly. If the issue continues, re-check the lamp installation.
- **Overheating:** Verify that the projector's air filter is clean and that ventilation ports are not obstructed.

For persistent issues, refer to your projector's original user manual or contact Jaspertronics support.

9. SPECIFICATIONS

Feature	Specification
Brand	Jaspertronics
Model Name	W401-LAMP
Light Type	Metal Halide
Special Features	Flicker-Free, Lightweight, Long Lasting
Wattage	280 watts
Brightness	4500 Lumen
Average Life	3000 Hours
Voltage	120 Volts
Material	Glass, Metal, Plastic
Product Dimensions	6"W x 4"H (approx.)
Item Weight	0.99 Pounds (approx.)
Included Components	Original Inside Projector Lamp & Housing

10. WARRANTY AND SUPPORT

This Jaspertronics Original Lamp & Housing module comes with a**1 Year Warranty**. For warranty claims, technical

assistance, or any questions regarding your product, please contact Jaspertronics customer support through the retailer where you purchased the item or visit the official Jaspertronics website.

© 2023 Jaspertronics. All rights reserved.

Related Documents - W401-LAMP

	<p>How to Replace an Acer Projector Lamp: Step-by-Step Guide</p> <p>A comprehensive guide on how to safely replace the lamp in your Acer projector. Learn the necessary tools, steps, and tips for a successful lamp change, applicable to various projector models.</p>
	<p>How to Replace an Acer Projector Lamp: A Step-by-Step Guide</p> <p>Detailed instructions on how to safely replace the lamp in an Acer projector, including tool requirements, cleaning, installation, and resetting the lamp timer. Learn how to maintain your projector for optimal performance.</p>
	<p>NEC VT46 Portable Projector User's Manual - Setup, Operation, and Troubleshooting Guide</p> <p>Comprehensive user manual for the NEC VT46 portable projector, covering setup, installation, connections, basic operation, on-screen menu navigation, maintenance, troubleshooting, specifications, and service information.</p>
	<p>NEC Projector Lamp and Filter Replacement Guide NP47LP</p> <p>Official guide for replacing the lamp and filter on NEC projectors, including lamp life information, caution notices, and indicator messages. Learn how to maintain your projector with the NP47LP lamp.</p>
	<p>Optoma EP7150 Digital DLP Projector - Portable and Powerful</p> <p>Discover the Optoma EP7150, an ultra-portable digital DLP projector weighing just 1.2kg. Featuring 2000 ANSI lumens, a 2500:1 contrast ratio, and a 4000-hour lamp life, it delivers exceptional image quality for presentations and multimedia. Learn about its versatile features, connectivity options, and specifications.</p>



[Moredig RCPL-001 Remote Control Musical Projection Lamp User Manual](#)

Comprehensive user manual for the Moredig RCPL-001 Remote Control Musical Projection Lamp. This guide covers product features, operation of the lamp and remote control, lamp film replacement, power connection, cleaning, important safety cautions and warnings, battery information, and WEEE disposal guidelines. Ideal for parents seeking a soothing night light for children.