

EPOMAKER DynaTab75X

EPOMAKER DynaTab 75X Wireless Gaming Keyboard User Manual

1. INTRODUCTION

The EPOMAKER DynaTab 75X is a versatile 75% layout mechanical keyboard designed for gaming and office use. It features multi-mode connectivity (Bluetooth, 2.4GHz wireless, USB-C wired), a customizable Dot-Matrix RGB LED screen, hot-swappable switches, and dynamic RGB lighting. This manual provides comprehensive instructions for setting up, operating, maintaining, and troubleshooting your DynaTab 75X keyboard.

2. PACKAGE CONTENTS

- EPOMAKER DynaTab 75X Mechanical Keyboard
- USB-C to USB-A Cable
- 2.4GHz Wireless Receiver
- Keycap Puller
- Switch Puller
- User Manual

3. PRODUCT OVERVIEW



Image 3.1: Front view of the EPOMAKER DynaTab 75X keyboard, showcasing its 75% layout and the integrated Dot-Matrix RGB LED screen.



DYNATAB 75X

Mechanical Gaming Keyboard





75% US Layout



Gasket & Foams



10000mAh Battery



2A Fast-Charging



WIN & mac & Android



BT & 2.4GHZ & USB-C



Dot-Matrix Screen



Dynamic RGB Light



South-Facing LEDs



Durable PBT Keycap



Hot Swappable



Programming Software

Image 3.2: Overview of the DynaTab 75X's core features, including its compact layout, internal structure, battery capacity, charging capabilities, broad compatibility, connectivity options, display, lighting, and customization.



Image 3.3: An exploded diagram illustrating the internal layers and components of the DynaTab 75X keyboard, highlighting its gasket-mounted design.

4. SETUP

4.1 Charging the Keyboard

Before initial use, fully charge the keyboard using the provided USB-C cable. Connect the USB-C end to the keyboard and the USB-A end to a power source (e.g., computer USB port, wall adapter). The Dot-Matrix screen may indicate charging status.

4.2 Connectivity Modes

10000mAh Battery
Support 2A Fast Charging

BLUETOOTH
PC/Tablet/Phone Compatible
Connect to 3 devices simultaneously

2.4GHZ WIRELESS
PC/Tablet/Phone Compatible
Connect to 3 devices simultaneously

USB-C WIRED
PC/Tablet/Phone Compatible
Connect to 3 devices simultaneously

Image 4.1: Visual representation of the three connectivity modes: Bluetooth, 2.4GHz wireless, and USB-C wired, each capable of connecting to multiple devices.

4.2.1 USB-C Wired Connection

1. Connect the USB-C cable to the keyboard's port.
2. Connect the USB-A end to your computer.
3. The keyboard will automatically switch to wired mode.

4.2.2 2.4GHz Wireless Connection

1. Locate the 2.4GHz wireless receiver.
2. Plug the receiver into an available USB port on your computer.
3. On the keyboard, switch the mode selector to 2.4G mode. The keyboard should connect automatically.

4.2.3 Bluetooth Connection

1. On the keyboard, switch the mode selector to Bluetooth mode.
2. Press and hold **Fn + 1**, **Fn + 2**, or **Fn + 3** for 3-5 seconds to enter pairing mode for the desired Bluetooth channel. The indicator light will flash.
3. On your device (computer, tablet, phone), search for Bluetooth devices and select "DynaTab 75X" to pair.
4. Once paired, the indicator light will stop flashing. You can switch between paired devices by pressing **Fn + 1/2/3**.

5. OPERATING INSTRUCTIONS

5.1 Dot-Matrix RGB LED Screen

The Dot-Matrix screen can display various information and animations. Customization is primarily done through the EPOMAKER software.



Image 5.1: Various display options for the Dot-Matrix screen, including dynamic light effects, custom text, system information, and personalized greetings.

5.2 RGB Backlighting

The keyboard features dynamic RGB backlighting. Use the dedicated light control button or the EPOMAKER software to cycle through lighting effects, adjust brightness, and change colors.

5.3 Customizable Software

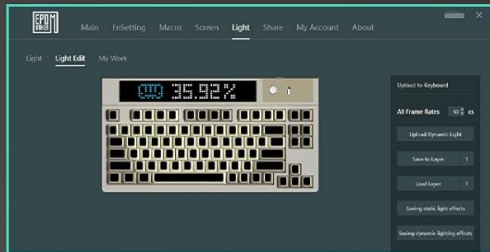
The EPOMAKER DynaTab 75X supports custom software for advanced configuration, including key remapping, macro creation, and Dot-Matrix screen customization.

CUSTOMIZABLE SOFTWARE

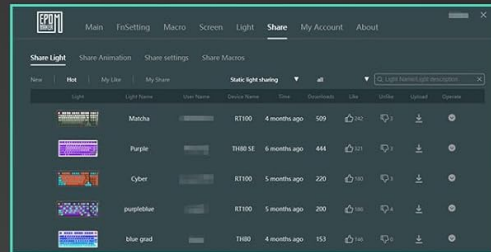
Programming Keys on Three Layers with Onboard Memory

FN+Z/X/C to Switch between Layer 1/2/3

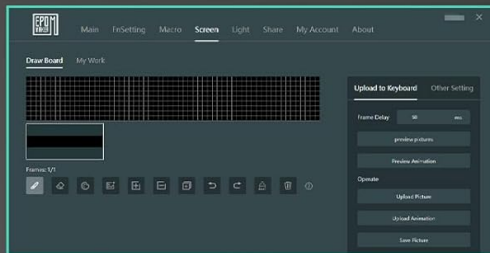
BackLight



Community



Screen



Sleep



Remap



Support Firmware

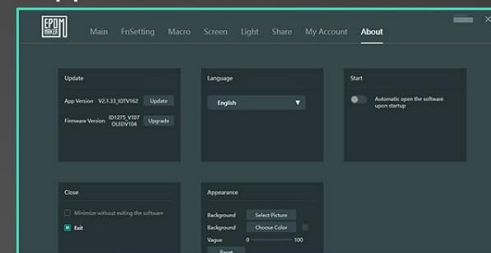


Image 5.2: Interface of the EPOMAKER software, demonstrating its capabilities for customizing backlight, screen content, key assignments, macros, and managing firmware.

1. Download the official EPOMAKER software from the EPOMAKER website.
2. Install and launch the software.
3. Connect your keyboard via USB-C to ensure full software functionality.
4. Use the software to to:
 - Customize Dot-Matrix screen content (text, animations, system info).
 - Remap keys and create custom macros.
 - Adjust RGB lighting effects and colors.
 - Manage keyboard layers (Fn+Z/X/C to switch between Layer 1/2/3).

6. MAINTENANCE

6.1 Cleaning

- Disconnect the keyboard from all power sources before cleaning.

- Use a soft, dry cloth to wipe the surface of the keyboard.
- For dust and debris between keycaps, use compressed air or a small brush.
- To clean keycaps, remove them using the keycap puller and wash with mild soap and water. Ensure they are completely dry before reattaching.

6.2 Hot-Swappable Switches

The DynaTab 75X features hot-swappable sockets, allowing you to change mechanical switches without soldering.



Image 6.1: Demonstration of the hot-swappable feature, showing a switch being removed from the PCB, compatible with 3/5-pin mechanical switches.

1. Use the provided switch puller to carefully remove the desired switch.
2. Align the pins of the new 3-pin or 5-pin mechanical switch with the socket holes on the PCB.
3. Gently press the new switch into place until it clicks. Ensure it is seated firmly and evenly.

7. TROUBLESHOOTING

- **Keyboard not responding:** Ensure the keyboard is charged. Check the connection mode (wired, 2.4G,

Bluetooth) and ensure it matches your device. Try reconnecting the USB cable or re-pairing Bluetooth.

- **2.4GHz wireless not connecting:** Ensure the 2.4GHz receiver is securely plugged into a USB port. Switch the keyboard to 2.4G mode. Try a different USB port.
- **Bluetooth connection issues:** Ensure the keyboard is in Bluetooth pairing mode (Fn + 1/2/3 for 3-5 seconds). Remove previous pairings from your device and re-pair. Ensure your device's Bluetooth is enabled.
- **Dot-Matrix screen not displaying:** Ensure the keyboard is powered on. Check software settings for screen display options. Update keyboard firmware if available.
- **RGB lighting not working:** Check brightness settings using the dedicated button or software. Ensure the lighting is enabled in the software.
- **Keys not registering:** If only specific keys are affected, try replacing the switch for that key (refer to Section 6.2). If multiple keys are affected, try resetting the keyboard (consult EPOMAKER support for specific reset procedures).
- **Software not detecting keyboard:** Ensure the keyboard is connected via USB-C. Close and reopen the software. Reinstall the software if necessary.







8. SPECIFICATIONS

Feature	Specification
Product Dimensions	13.58 x 7.13 x 1.65 inches
Item Weight	3.1 pounds
Manufacturer	EPOMAKER
Item Model Number	EPOMAKER DynaTab75X
Batteries	1 Lithium Ion battery required (included)
Brand	EPOMAKER
Compatible Devices	Gaming Console, PC
Connectivity Technology	Bluetooth, USB-A, USB-C
Keyboard Description	Ergonomic
Material	Polybutylene Terephthalate (PBT Keycaps)
Power Source	Battery Powered
Switch Type	Linear or Clicky or Tactile (Hot-swappable)
Keyboard Layout	QWERTY (75% layout)
Hand Orientation	Ambidextrous
Number of Buttons	84

9. WARRANTY AND SUPPORT

For warranty information and technical support, please refer to the official EPOMAKER website or contact their customer service directly. Keep your purchase receipt for warranty claims.

Related Documents - DynaTab75X

	<p>EPOMAKER F108 PRO Mechanical Keyboard Quick Start Guide</p> <p>This guide provides instructions for setting up and using the EPOMAKER F108 PRO mechanical keyboard, including connection methods, function key combinations, and troubleshooting.</p>
	<p>EPOMAKER x Aula F108 Mechanical Keyboard Quick Start Guide</p> <p>This guide provides instructions for setting up and using the EPOMAKER x Aula F108 mechanical keyboard, including pairing, lighting effects, and troubleshooting.</p>
	<p>EPOMAKER GALAXY 70 Quick Start Guide</p> <p>A quick start guide for the EPOMAKER GALAXY 70 mechanical keyboard, covering setup, function key combinations, lighting effects, and troubleshooting.</p>
	<p>EPOMAKER TH80 X: Quick Start Guide and Features</p> <p>Comprehensive guide for the EPOMAKER TH80 X 75% Hot-Swap Wired/Wireless RGB Mechanical Keyboard with LED-Screen, covering setup, features, shortcuts, and troubleshooting.</p>
	<p>EPOMAKER x AULA F65 Mechanical Keyboard Quick Start Guide</p> <p>A comprehensive guide to setting up and using the EPOMAKER x AULA F65 65% Gasket-mounted Hot-swappable RGB Mechanical Keyboard with 2.4Ghz, Bluetooth 5.0, and Type-C connectivity.</p>
	<p>EPOMAKER TH80-X Mechanical Keyboard User Guide</p> <p>Comprehensive guide to using the EPOMAKER TH80-X mechanical keyboard, covering wireless connectivity, software interaction, backlight customization, and GIF/photo uploads.</p>