



Manuals.plus /

› AMZtime /

› AMZtime Solar Water Fountain 1W User Manual

## AMZtime 1W-2024NEW

# AMZtime Solar Water Fountain 1W User Manual

Model: 1W-2024NEW

Brand: AMZtime

## INTRODUCTION

This manual provides detailed instructions for the safe and efficient use of your AMZtime 1W Solar Water Fountain. Please read this manual thoroughly before installation and operation to ensure optimal performance and longevity of your product.

## PRODUCT FEATURES

- **Upgraded Solar Panel:** Activates within 3 seconds under direct sunlight, providing strong water spray without electricity or batteries.
- **6 Nozzle Options:** Includes six different nozzles to customize spray patterns for various aesthetic preferences.
- **4 Fixed Brackets:** Designed to keep the fountain centered in your bird bath, preventing movement and water loss.
- **Effortless Operation:** Simple submersion in water initiates operation under sunlight.
- **Versatile Application:** Suitable for bird baths, fish tanks, small ponds, pools, and garden decoration, enhancing water circulation and oxygenation.

## PACKAGE CONTENTS

Please ensure all components are present before proceeding with installation:

- 1 x AMZtime Solar Water Fountain Pump
- 6 x Interchangeable Nozzles
- 4 x Fixed Brackets
- 1 x User Manual



Image: All components included in the package, showing the solar pump, different spray heads, and stabilizing rods.

## SETUP INSTRUCTIONS

1. **Assemble Nozzle:** Choose your desired nozzle and attach it firmly to the pump outlet.
2. **Attach Fixed Brackets (Optional):** If using in a bird bath or small container, attach the four fixed brackets to the sides of the pump to prevent it from floating to the edge and spraying water out.
3. **Place in Water:** Submerge the solar fountain pump completely in water. Ensure the water level is sufficient to cover the pump.
4. **Position for Sunlight:** Place the fountain in an area where the solar panel receives direct sunlight. The pump will start operating within 3 seconds of receiving adequate sunlight.



Image: Visual guide for assembling the fountain, including attaching nozzles and placing it in water.

## OPERATING INSTRUCTIONS

The AMZtime Solar Water Fountain is designed for simple, solar-powered operation:

- The fountain operates automatically when the solar panel is exposed to direct sunlight.
- Performance is directly dependent on the intensity of sunlight. Stronger sunlight results in higher and more consistent water spray.
- Ensure the water level is always sufficient to fully submerge the pump to prevent damage.

- For best results, use in clean water.



Image: The solar fountain actively spraying water in a bird bath, demonstrating its operation.

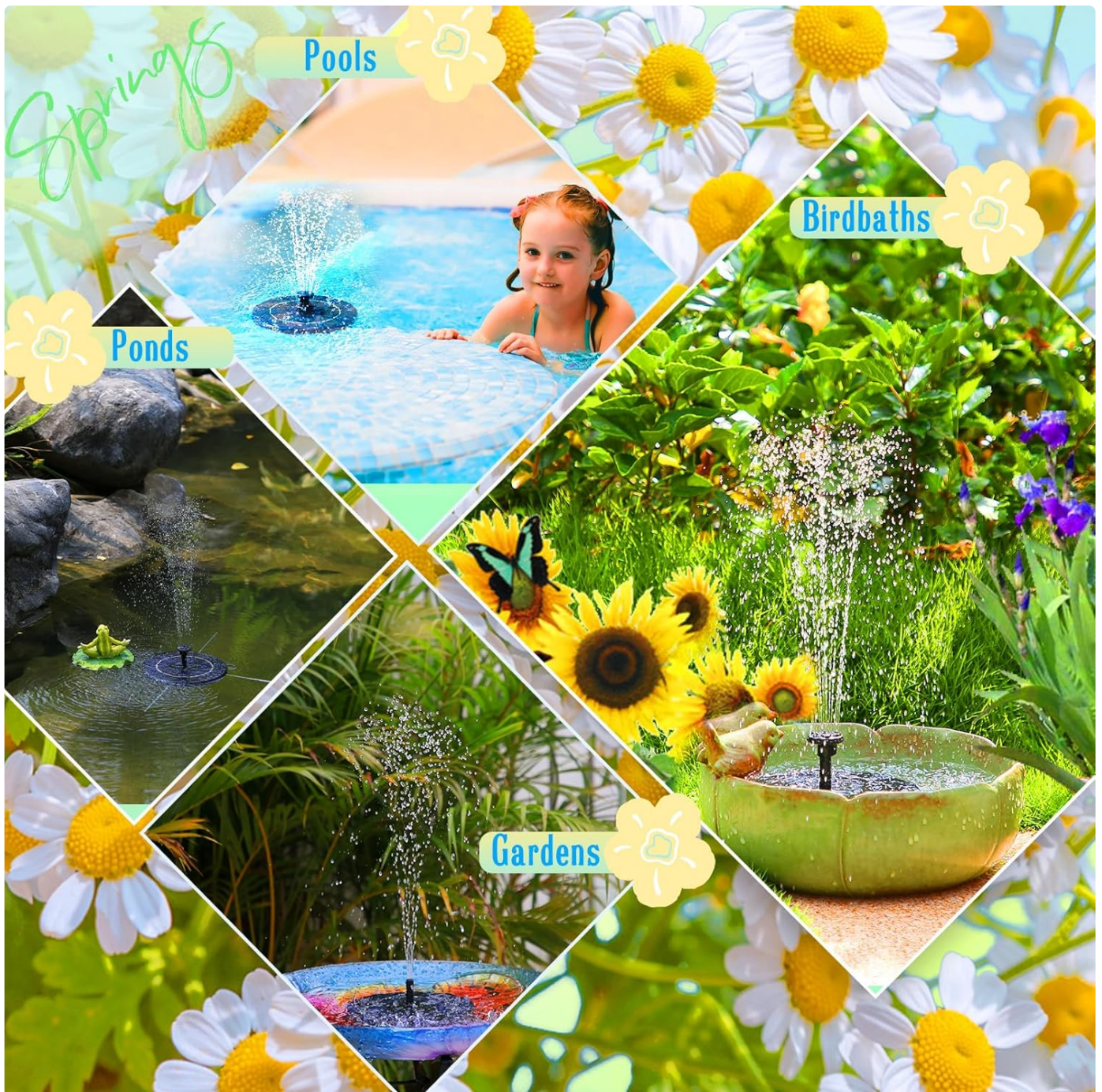


Image: Examples of the solar fountain being used in different outdoor settings like ponds, pools, and bird baths.

## MAINTENANCE

Regular maintenance ensures the longevity and efficient operation of your solar fountain:

- **Clean the Pump Regularly:** Periodically remove the pump from the water and clean any debris, dirt, or algae that may have accumulated on the filter or impeller. This prevents blockages and maintains water flow.
- **Keep Water Clean:** Ensure the water in your bird bath or pond is clean to minimize clogging of the pump.
- **Protect from Freezing:** During freezing temperatures, remove the fountain from the water and store it indoors to prevent damage.

Regular cleaning helps to extend the life of the fountain



Image: Instructions for cleaning the pump, highlighting the filter and impeller for maintenance.

## TROUBLESHOOTING

If your solar fountain is not operating correctly, consider the following common issues:

Problem	Possible Cause	Solution
Fountain does not spray water.	<ul style="list-style-type: none"> <li>◦ Insufficient sunlight.</li> <li>◦ Low water level (below 2.54 cm / 1 inch).</li> <li>◦ Solar panel is dirty or obstructed.</li> <li>◦ Pump is blocked by debris.</li> </ul>	<ul style="list-style-type: none"> <li>◦ Move to an area with direct sunlight.</li> <li>◦ Add water to ensure the pump is fully submerged.</li> <li>◦ Clean the solar panel surface.</li> <li>◦ Clean the pump and filter thoroughly.</li> </ul>
Water spray is weak or inconsistent.	<ul style="list-style-type: none"> <li>◦ Weak sunlight.</li> <li>◦ Partial blockage in pump or nozzle.</li> </ul>	<ul style="list-style-type: none"> <li>◦ Ensure full, direct sunlight exposure.</li> <li>◦ Clean the pump and selected nozzle.</li> </ul>
Water sprays out of the container.	<ul style="list-style-type: none"> <li>◦ Nozzle spray pattern is too wide/high for the container.</li> <li>◦ Fountain is not centered.</li> </ul>	<ul style="list-style-type: none"> <li>◦ Switch to a different nozzle with a lower or narrower spray.</li> <li>◦ Use the fixed brackets to center the fountain.</li> <li>◦ Use a larger birdbath or container.</li> </ul>



Image: Visual representation of common issues preventing fountain operation, such as shade, low water, or blockages.

## SPECIFICATIONS

<b>Brand</b>	AMZtime
<b>Model Number</b>	1W-2024NEW
<b>Power Source</b>	Solar Powered
<b>Material</b>	Plastic
<b>Color</b>	Black
<b>Product Dimensions</b>	5.51"L x 5.31"W x 1.68"H
<b>Item Weight</b>	6.7 Ounces
<b>Special Feature</b>	Upgraded Solar Panel
<b>UPC</b>	739750149614



Image: Detailed product dimensions for the solar fountain.

## WARRANTY AND SUPPORT

---

For warranty information or technical support, please refer to the contact details provided with your purchase or visit the official AMZtime website. Keep your purchase receipt as proof of purchase for any warranty claims.