

## SAMSUNG LH50QBCEBGXGO

# SAMSUNG 50" Commercial UHD Signage Instruction Manual

Model: LH50QBCEBGXGO

Brand: SAMSUNG

## 1. PRODUCT OVERVIEW

The SAMSUNG 50" Commercial UHD Signage (Model: LH50QBCEBGXGO) is an advanced display solution designed for commercial environments. It features an ultra-slim depth of 28.5mm, optimizing space with its sleek and elegant design. The display incorporates Dynamic Crystal Color technology, delivering over one billion shades for an immersive viewing experience. Powered by the Quantum Processor Lite 4K, it enhances and elevates content for superior clarity and consistency.

Key features include:

- **Ultra-Slim Design:** At an unparalleled 28.5mm depth, it is the slimmest display in Samsung's UHD Signage series.
- **Dynamic Crystal Color:** Provides more than one billion shades for a pure, immersive viewing experience.
- **Quantum Processor Lite 4K:** Intelligent, industry-leading technology that enhances content for clarity and consistency, including intelligent UHD upscaling.
- **Home UI:** An upgraded home screen user interface for convenient access to features, sources, and settings.
- **Centered VESA Holes:** Ensures secure and even mounting, particularly beneficial for portrait mode installations.

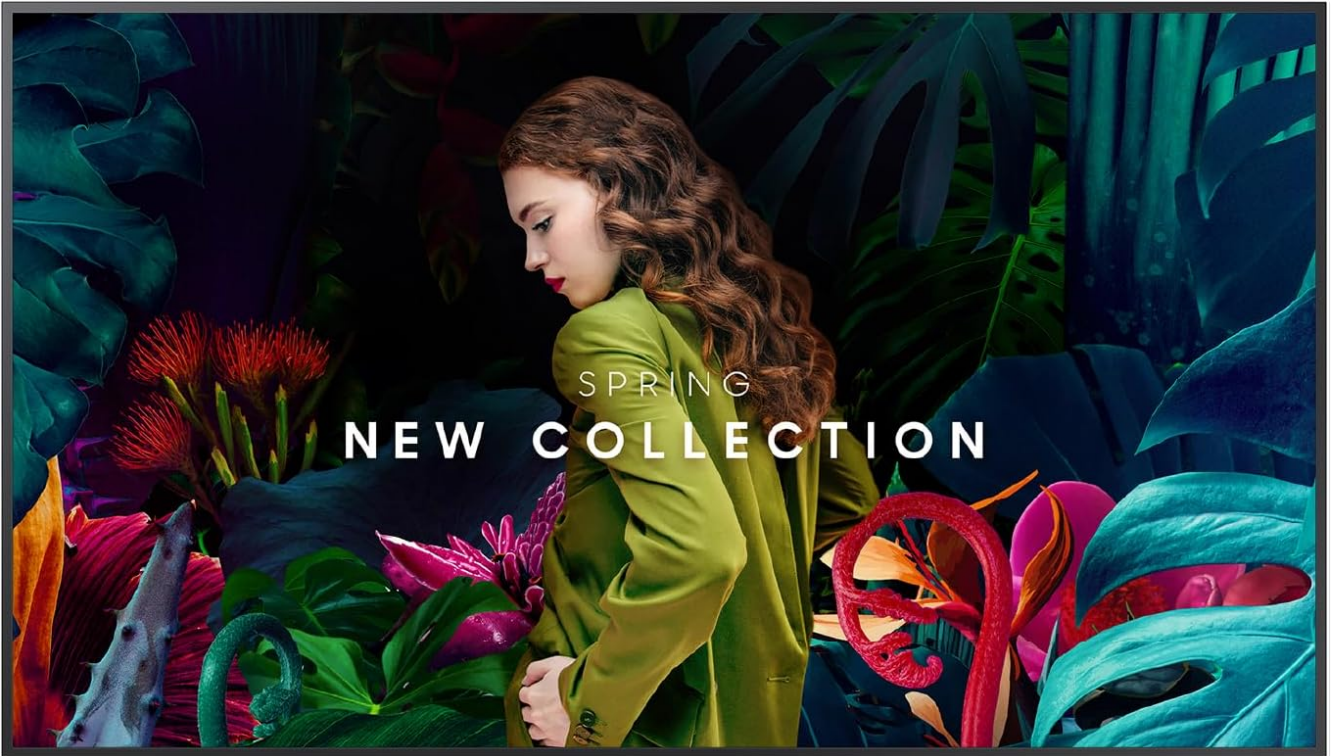


Figure 1.1: Front view of the Samsung 50-inch Commercial UHD Signage display. This image illustrates the display's vibrant picture quality, showcasing a digital advertisement with rich colors and sharp details, highlighting its commercial application.

## 2. SETUP AND INSTALLATION

### 2.1 Unpacking the Display

Carefully remove the display and all accessories from the packaging. It is recommended to retain the packaging materials for future transport or storage.

### 2.2 Mounting the Display

The QBC Series features an ultra-slim depth and centrally positioned VESA holes for secure and even mounting. This design allows for flexible installation in both landscape and portrait orientations.

- Identify the VESA mounting holes on the back of the display. These are centrally positioned to distribute weight evenly.
- Use a compatible VESA wall mount (sold separately) that supports the display's weight and VESA pattern.
- Ensure the mounting surface is strong enough to support the display's weight (approximately 32 pounds for the 50-inch model).
- Follow the instructions provided with your VESA wall mount for proper and safe installation.



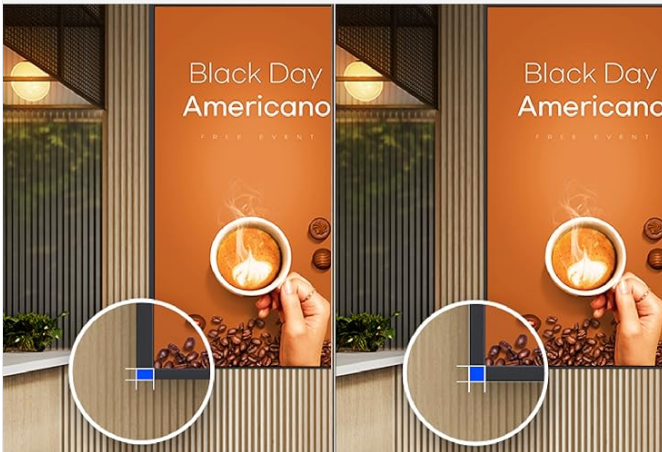
Vesa Hole Center area



## Secure and even mounting

The central positioning of the VESA holes on the back of the display enable the weight to be evenly distributed for secure mounting. With the VESA holes now shifted to the center, users can adjust the display to portrait mode, while avoiding unintentional tilting.

Figure 2.1: Secure and even mounting. This image highlights the central positioning of the VESA holes on the back of the display, designed to ensure balanced weight distribution for secure mounting, particularly when used in portrait mode, preventing unintentional tilting.



## Clean visuals in landscape or portrait mode

The bezels are consistent and even on all four sides of the display, with the same thickness and dimensions. The uniform design allows for visual consistency when the display is adjusted to portrait mode.\*

\* When compared to Samsung's previous UHD signage models.

Figure 2.2: Clean visuals in landscape or portrait mode. This image demonstrates the display's ability to maintain consistent visual quality and uniform design whether oriented in landscape or portrait mode, thanks to its consistent bezels on all sides.

## 2.3 Connecting Peripherals

The display offers various input ports for connecting external devices. Refer to the port layout on the back of the display for specific connections.

- **Power:** Connect the provided power cable to the display's power input and a suitable power outlet.
- **HDMI:** Connect HDMI-compatible devices (e.g., media players, computers) to the available HDMI input ports.
- **USB:** Use the USB ports for connecting USB storage devices or other peripherals for content playback or updates.
- **Network:** Connect an Ethernet cable to the LAN port for wired network connectivity and access to network features.

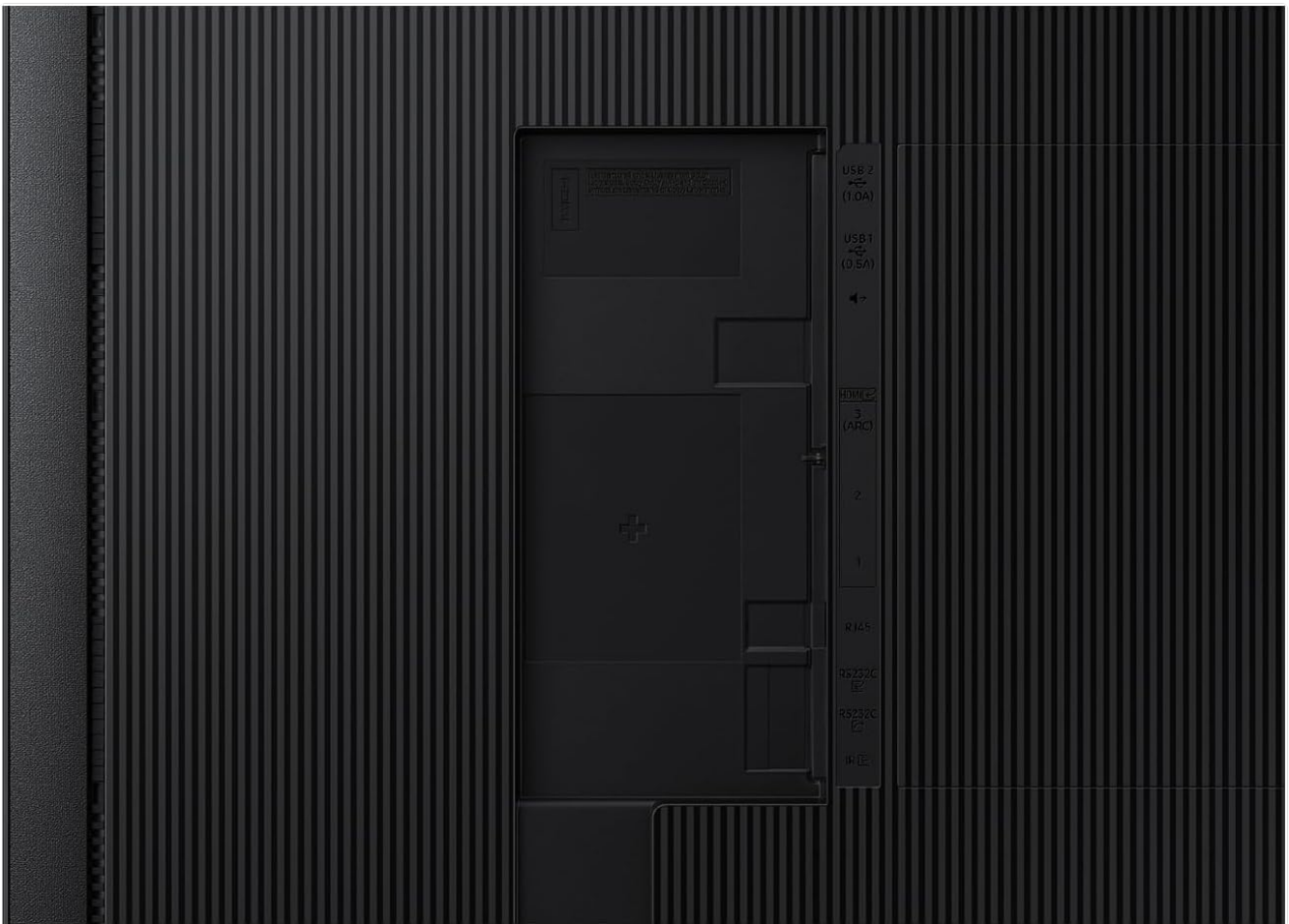


Figure 2.3: Input ports. This image provides a detailed view of the various connectivity options available on the back of the display, including HDMI, USB, and network ports, essential for integrating the signage into diverse commercial setups.

## 3. OPERATING THE DISPLAY

### 3.1 Powering On/Off

Press the power button on the remote control or the display itself to turn the unit on or off. Ensure the power cable is securely connected.

### 3.2 Navigating the Home UI

The QBC Series features an upgraded Home UI for intuitive navigation and quick access to essential functions. Popular categories such as Favorites, Sources, and Settings are conveniently displayed on the home screen.

- Use the directional buttons on the remote control to navigate through the menu options.
- Select "Favorites" for quick access to frequently used features or content.
- Choose "Sources" to switch between connected input devices (e.g., HDMI 1, HDMI 2, USB).
- Access "Settings" to configure display parameters, network settings, and other advanced options.

## Connect with convenience

QBC boasts greater usability with an upgraded home screen UI. For the ultimate convenience, popular categories such as Favorites, Sources, and Settings are displayed on the home screen, all available in one place. The Favorites folder grants users quick, easy access to frequently used features in a single click.

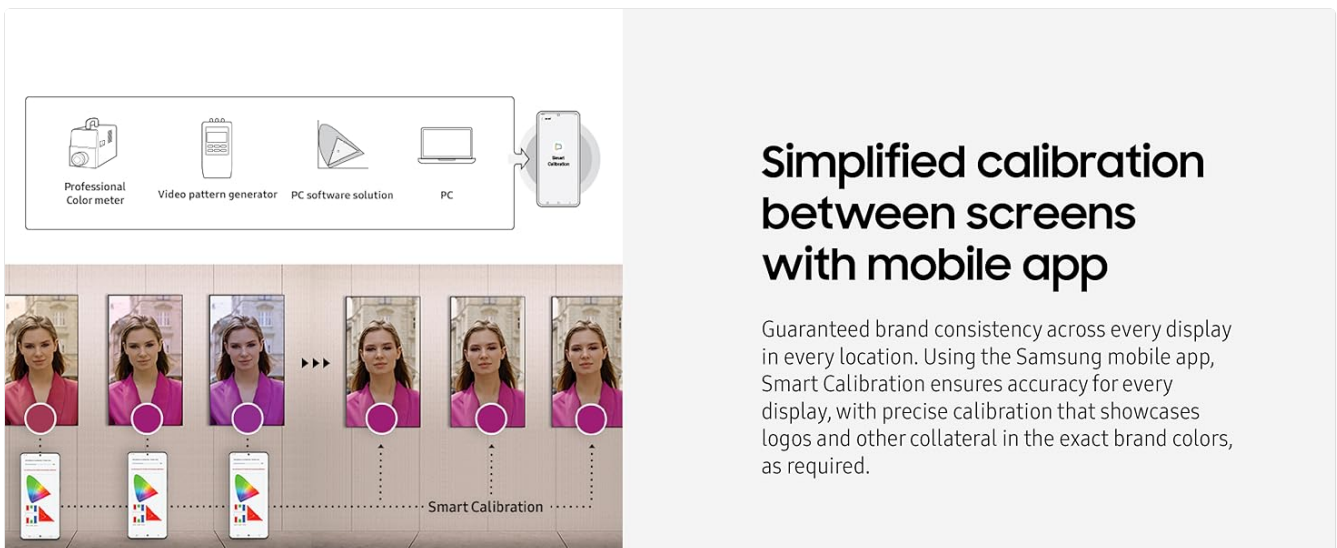


Figure 3.1: Connect with convenience. This image displays the intuitive Home UI of the QBC Series, illustrating how users can easily access frequently used features, input sources, and settings from a single, organized screen, enhancing operational efficiency.

### 3.3 Content Management and Calibration

The display supports advanced content management and calibration features for optimal visual performance and consistency across multiple units.

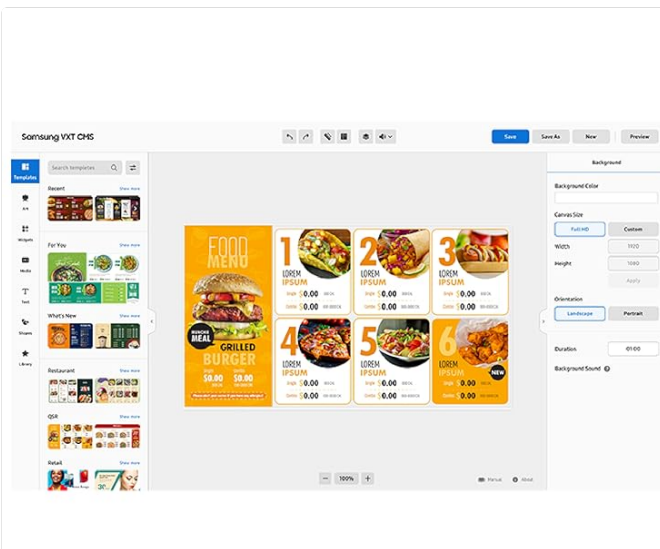
- **Smart Calibration:** Utilize the Samsung mobile app for simplified and precise calibration across multiple displays. This ensures guaranteed brand consistency and accurate display settings, showcasing logos and other collateral in exact brand colors.
- **Samsung VXT CMS:** A cloud-based solution (purchased separately) designed for comprehensive content management and remote device management. It allows users to effortlessly create, deploy, and troubleshoot content remotely without extensive training.



## Simplified calibration between screens with mobile app

Guaranteed brand consistency across every display in every location. Using the Samsung mobile app, Smart Calibration ensures accuracy for every display, with precise calibration that showcases logos and other collateral in the exact brand colors, as required.

Figure 3.2: Simplified calibration with mobile app. This diagram illustrates the step-by-step process of using the Samsung mobile app for Smart Calibration, ensuring precise color accuracy and brand consistency across multiple displays in various locations.



## Change your approach to display management

Samsung VXT CMS is a cloud-based solution that brings together content management and remote device management capabilities, allowing users to remotely manage hardware settings and troubleshoot issues while effortlessly creating and deploying content with no previous training needed.\*

\* VXT CMS must be purchased separately.

Figure 3.3: Samsung VXT CMS interface. This image shows the user interface of the Samsung VXT CMS, a cloud-based solution designed for efficient content management and remote control of the display, streamlining operations.

## 4. MAINTENANCE AND CARE

Proper maintenance ensures the longevity and optimal performance of your Samsung Commercial UHD Signage. Follow these guidelines for care:

- **Cleaning the Screen:** Gently wipe the screen with a soft, lint-free cloth. For stubborn smudges, slightly dampen the cloth with water or a screen-cleaning solution specifically designed for electronic displays. Avoid harsh chemicals, abrasive materials, or direct spraying onto the screen.
- **Cleaning the Cabinet:** Wipe the display's cabinet and frame with a soft, dry cloth.
- **Ventilation:** Ensure proper ventilation around the display to prevent overheating. Do not block any ventilation openings on the unit. Maintain adequate space around the display for airflow.
- **Power Management:** Unplug the display from the power outlet during lightning storms or when it will be left unattended for extended periods to prevent electrical damage.

## 5. TROUBLESHOOTING

If you encounter issues with your display, refer to the following common troubleshooting steps. For problems not listed, or if solutions do not resolve the issue, contact Samsung customer support.

Problem	Possible Cause	Solution
No power	Power cable disconnected; Power outlet not working; Display is off	Check power cable connection at both ends; Try a different power outlet; Press the power button on the remote or display.

Problem	Possible Cause	Solution
No image on screen	Incorrect input source selected; Loose video cable connection; Connected device is off or not sending signal	Select the correct input source (e.g., HDMI 1, HDMI 2) using the remote; Ensure video cables are securely connected; Power on the connected device and verify its output.
Image is distorted or blurry	Incorrect resolution setting; Cable quality issue; Display settings need adjustment	Adjust display resolution on the connected device to match the display's native resolution (4K); Try a different, higher-quality video cable; Reset display picture settings to default.
Remote control not working	Dead batteries; Obstruction between remote and display sensor; Incorrect remote mode	Replace batteries with new ones; Remove any obstructions and point remote directly at the display's sensor; Ensure the remote is in the correct mode for controlling the display.

For more complex issues or persistent problems, please contact Samsung customer support for further assistance.

## 6. SPECIFICATIONS

Detailed technical specifications for the SAMSUNG 50" Commercial UHD Signage (Model: LH50QBCEBGXGO):

Feature	Detail
Brand	SAMSUNG
Model Number	LH50QBCEBGXGO
Screen Size	50 Inches
Resolution	4K UHD (3840 x 2160)
Aspect Ratio	16:9
Product Dimensions (WxHxD)	44.3 x 25.4 x 1.1 inches (approx.)
Item Weight	32 pounds
Color Name	Charcoal Black
Special Features	Flat Panel, Ultra-Slim Depth (28.5mm), Dynamic Crystal Color, Quantum Processor Lite 4K, Home UI, Centered VESA Holes
Screen Surface Description	Glossy
Connectivity	HDMI, USB, Ethernet (LAN)

## 7. WHAT'S IN THE BOX

---

The following items are included with your purchase of the Samsung 50" Commercial UHD Signage:

- Power Cable
- Remote Control
- Warranty Card

## 8. WARRANTY AND SUPPORT

---

This SAMSUNG 50" Commercial UHD Signage (Model: LH50QBCEBGXGO) comes with a **3-Year Warranty**, providing peace of mind regarding your investment.

For technical support, service inquiries, or to initiate a warranty claim, please contact Samsung customer support. You can typically find contact information on the included warranty card or by visiting the official Samsung website.

Additional product information and support resources may also be available on the official Samsung store on Amazon: [Samsung Store on Amazon](#)