

Manuals.plus /

- › EPOMAKER /
- › EPOMAKER x Aula F99 Wireless Mechanical Keyboard User Manual

EPOMAKER F99

EPOMAKER x Aula F99 Wireless Mechanical Keyboard User Manual

Model: F99 | Brand: EPOMAKER

1. INTRODUCTION

This manual provides detailed instructions for the EPOMAKER x Aula F99 Wireless Mechanical Keyboard. Designed for both gaming and work, this keyboard features a compact 96% layout with 99 keys, including a number pad and arrow keys. It boasts a gasket-mounted structure for enhanced typing feel, innovative five-layer sound-shock absorption, and versatile three-way connectivity (Bluetooth, 2.4GHz wireless, and wired USB-C). The F99 is equipped with an 8000mAh battery for extended use and offers hot-swappable sockets for personalized switch customization.



Image: Top-down view of the EPOMAKER x Aula F99 Wireless Mechanical Keyboard, highlighting its 96% layout and white and light blue keycap color scheme.

2. WHAT'S IN THE BOX

Upon unboxing your EPOMAKER x Aula F99 keyboard, please verify that all the following components are included:

- EPOMAKER x Aula F99 Wireless Mechanical Keyboard
- Keycap Puller
- USB Cable (Type-C)
- 2.4G Wireless Dongle
- User Manual (Printed)
- Additional Switches (Graywood V3 Switch)



Image: The EPOMAKER x Aula F99 keyboard and its accessories laid out, including the keyboard, USB-C cable, keycap puller, and the printed user manual.

3. SPECIFICATIONS

Feature	Description
Product Dimensions	15.75 x 5.51 x 1.57 inches
Item Weight	2.2 pounds
Model Number	F99
Connectivity Technology	Bluetooth, 2.4GHz Wireless, USB-C Wired
Number of Keys	99
Keyboard Layout	96% Layout (1800 Compact)
Battery Capacity	8000 mAh
Backlighting	RGB
Special Features	Gasket Mounted, Hot-Swappable, Five-Layer Padding, Programmable
Compatible Devices	Laptop, Gaming Console, PC, Tablet, Smartphone (Windows, macOS, iOS, Android)



Image: Diagram illustrating the 1800 layout of the F99 keyboard, including its dimensions (390mm length, 147mm width, 30mm height) and weight (1.16kg).

4. SETUP

4.1 Connectivity

The F99 keyboard offers three versatile connection modes:

- **Bluetooth:** For wireless connection to compatible devices. Use Fn+1/2/3 to switch between up to three paired Bluetooth devices.
- **2.4GHz Wireless:** Utilizes the included USB dongle for a stable, low-latency wireless connection. Insert the dongle into your device's USB port.
- **USB-C Wired:** Connect the keyboard directly to your device using the provided USB-C cable. This mode also charges the keyboard.



Image: Visual representation of the F99's three connectivity options: Bluetooth, 2.4GHz wireless via dongle, and wired USB-C, compatible with various devices like PCs, laptops, tablets, and smartphones.

4.2 System Compatibility

The F99 keyboard is designed for broad compatibility across multiple operating systems. It supports Windows, macOS, iOS, and Android devices. To switch between operating system modes, use the following shortcuts:

- **Fn+E:** Switch to Mac mode
- **Fn+Q:** Switch to Android mode
- **Fn+R:** Switch to iOS mode
- **Fn+W:** Switch to Windows mode

If the Win key or Alt key stops working properly, use these shortcuts to ensure the keyboard is in the correct OS mode for your device.

MULTI-SYSTEM COMPATIBLE



Image: The F99 keyboard positioned in front of a computer monitor, illustrating its compatibility with various systems including PS4/5, Xbox, PC, Laptop, Tablet, and PlayStation.



Image: A visual guide demonstrating the Fn key combinations (Fn+E, Fn+Q, Fn+R, Fn+W) to switch the keyboard's operating system mode between Mac, Android, iOS, and Windows.

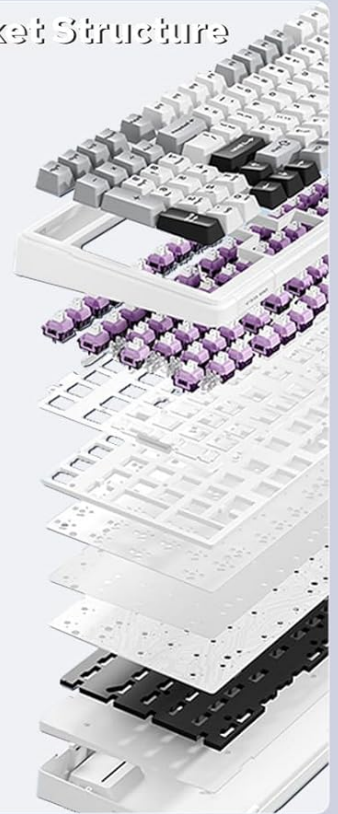
4.3 Initial Charge

The F99 keyboard is equipped with an 8000mAh ultra-high capacity battery, providing long-lasting performance. For optimal battery life, it is recommended to fully charge the keyboard before its first use. Connect the USB-C cable to the keyboard's port and a power source (e.g., computer USB port, wall adapter). The power indicator light will show charging status.

8000mAh



Gasket Structure



Tri-mode Wireless



Graywood V3 Switch



PBT Keycaps



Numpad

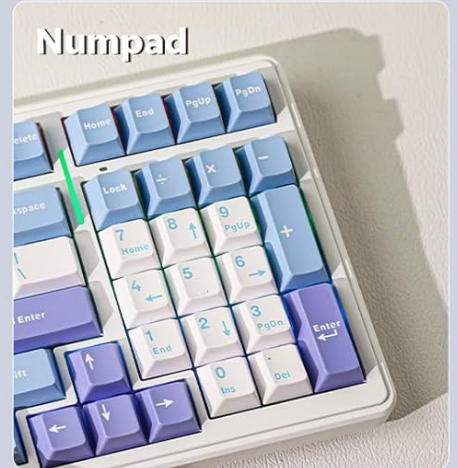


Image: A composite image showcasing key features of the F99 keyboard, including its 8000mAh battery, gasket structure, tri-mode wireless connectivity, Graywood V3 switches, PBT keycaps, and integrated numpad.



Image: A visual emphasizing the F99 keyboard's 8000mAh ultra-high capacity battery, indicating extended usage times of approximately 53 hours with RGB on and 400 hours with RGB off.

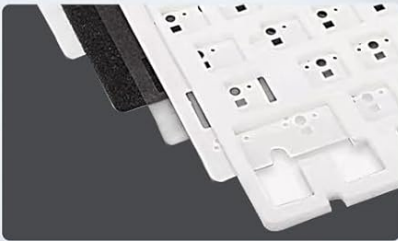
5. OPERATING

5.1 Key Features

The F99 keyboard incorporates several advanced features for an optimized user experience:

- **Gasket Mounted Structure:** The gasket-mounted design, complemented by an extended one-piece silicone pad, provides unmatched typing resilience and stability. This soft elastic structure ensures each keystroke is both softer and more responsive, reducing typing fatigue.
- **Innovative Single-Key Slotted PCB & Five-Layer Sound-Shock Absorption:** Equipped with a unique single-key slotted FR4 PCB, the F99 offers smooth typing feedback. Each key is independently slotted, enhancing crispness and accuracy. The five-layer design, including IXPE under-shaft pads, PORON sound-absorbing cotton, and silicone bottom padding, ensures ultra-comfortable typing with reduced sound and shock.
- **Hot-Swappable PCB & Pre-lubed Linear Switches:** Enjoy the flexibility of personalizing your typing experience with the F99's full-key hot-swappable sockets, supporting 3/5 pin mechanical switches. Easily interchange switches with a simple pull-and-plug method. All switches are factory pre-lubricated for longevity and durability.
- **Next-Generation Wireless Connectivity:** Cutting-edge wireless technology provides low-latency, ultra-fast connection, ensuring faster data transmission and immediate key response. This is ideal for both daily use and intense gaming sessions, combined with low-power consumption for extended usage.
- **RGB Backlighting:** The keyboard features customizable RGB backlighting. You can toggle backlight effects using **Fn+`** and toggle backlight colors using **Fn+Tab**.

FLEXIBLE & STABLE TYPING EXPERIENCE



5 Layers of Sound
-Improving Materials



PCB Flex-Cut



PC Plate Flex-cut

Image: A side-profile view of the F99 keyboard, illustrating its flexible and stable typing experience, highlighting the 5 layers of sound-improving materials, PCB flex-cut, and PC plate flex-cut.

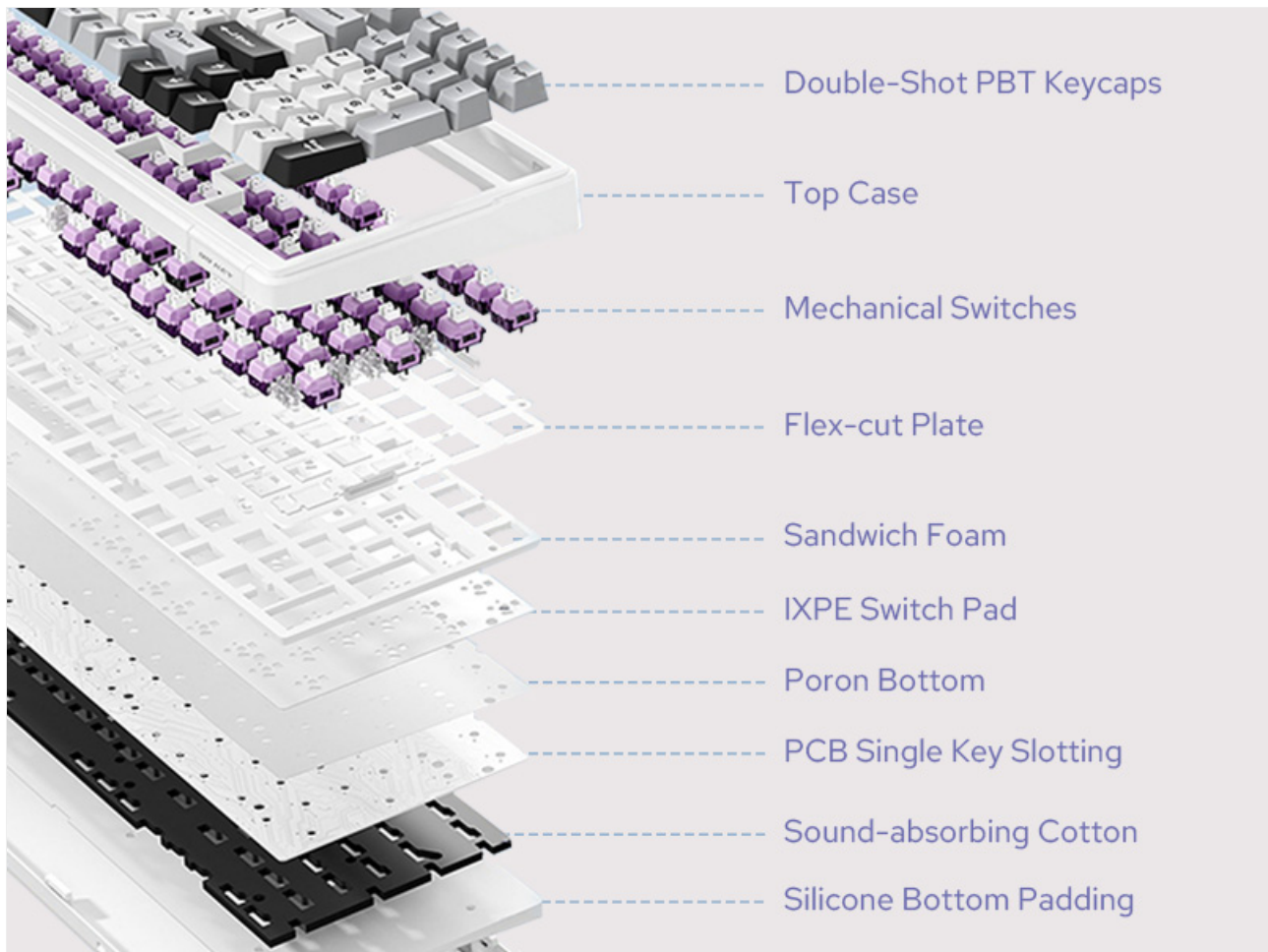


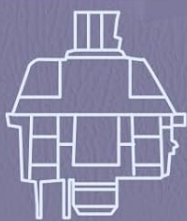
Image: An exploded diagram detailing the internal components of the F99 keyboard, including Double-Shot PBT Keycaps, Top Case, Mechanical Switches, Flex-cut Plate, Sandwich Foam, IXPE Switch Pad, Poron Bottom, PCB Single Key Slotting, Sound-absorbing Cotton, and Silicone Bottom Padding.

HOT SWAPPABLE KEYBOARD

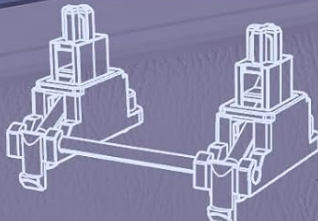
3/5 Pins Mechanical Switches Available



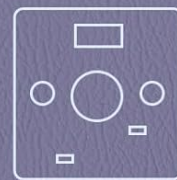
North-facing LEDs



Pre-lubed Switches



Fine-tuned Stabilizers



Hot Swap Socket

Image: A hand demonstrating the hot-swappable feature of the F99 keyboard by using a switch puller to remove a mechanical switch, with illustrations of pre-lubed switches, fine-tuned stabilizers, and hot swap sockets.



Image: A close-up of the F99 keyboard demonstrating the hot-swappable PCB, with a hand inserting a switch, emphasizing the DIY customization aspect of the mechanical keyboard.

LOW LATENCY & ANTI-GHOSTING



Image: The F99 keyboard on a desk, with an overlay illustrating its low latency and anti-ghosting capabilities across wired (2ms), 2.4G wireless (3ms), and Bluetooth (7ms) connections.

ANTI-GHOSTING /N-KEY ROLLOVER

More Input in Less Time

Accurately and seamlessly input multiple keys without delay or mistype



Image: The F99 keyboard with several keys highlighted, demonstrating its anti-ghosting and N-key rollover features, which allow for accurate and seamless input of multiple keys simultaneously.

RGB & SINGLE COLOR BACKLIT



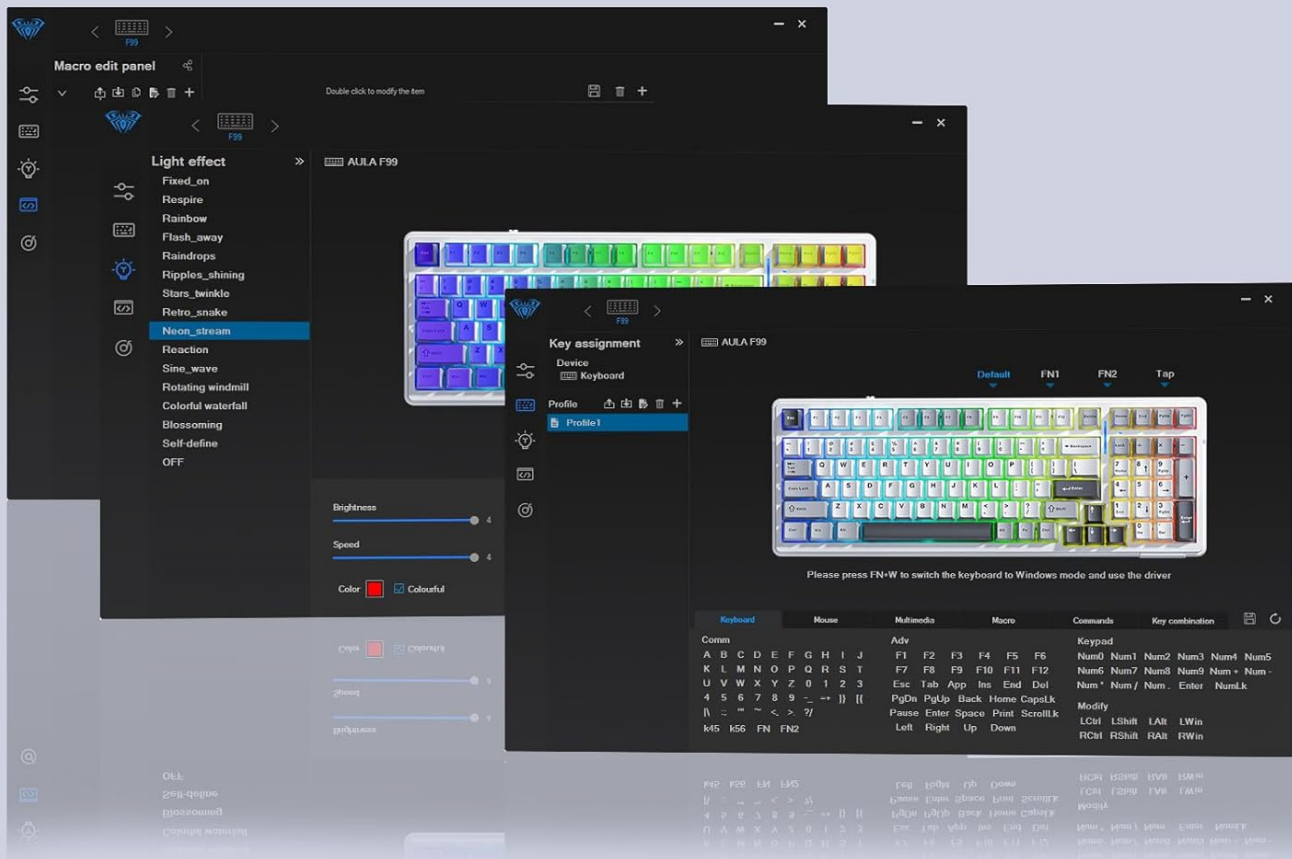
Image: The F99 keyboard displaying vibrant RGB backlighting, with visual cues for Fn + \ to toggle backlight effects and Fn + Tab to toggle backlight colors.

5.2 Programmable Software

The F99 keyboard supports programmable software, allowing for extensive customization of its functions and lighting. With the software, you can:

- Record and assign macros to specific keys.
- Remap key functions to suit your workflow or gaming preferences.
- Adjust and customize RGB lighting effects and colors.
- Set up music rhythm synchronization for dynamic lighting.

PROGRAMMABLE SOFTWARE



Macro Recording Key Remapping RGB Effect Setting Music Rhythm

Image: Screenshots of the F99 keyboard's programmable software interface, showing options for macro editing, key remapping, RGB effect settings, and music rhythm synchronization.

it might be due to low battery; charge the keyboard.

- **Connectivity Drops:** For 2.4GHz, ensure the dongle is not obstructed and is close to the keyboard. For Bluetooth, try re-pairing the device. Ensure there are no strong interferences from other wireless devices.
- **Incorrect OS Layout:** If certain keys (e.g., Win/Alt) behave unexpectedly, refer to Section 4.2 System Compatibility and use the appropriate Fn key combination to switch to the correct operating system mode.

For more detailed troubleshooting or persistent issues, please refer to the official user manual PDF available [here](#).

8. WARRANTY AND SUPPORT

EPOMAKER products are manufactured to high-quality standards and are backed by a manufacturer's warranty. For specific warranty terms and conditions, please refer to the documentation included with your product or visit the official EPOMAKER website.

For technical support, product inquiries, or warranty claims, please contact EPOMAKER customer service through their official channels. You can also visit the EPOMAKER Store on Amazon for additional product information and support resources.

