

Manuals+

[Q & A](#) | [Deep Search](#) | [Upload](#)

manuals.plus /

- › [Rubik's](#) /
- › [Rubik's ConnectedX Bluetooth-Enabled 3x3 Speed Cube User Manual](#)

Rubik's 6069388

Rubik's ConnectedX Bluetooth-Enabled 3x3 Speed Cube User Manual

Model: 6069388

1. INTRODUCTION

The Rubik's ConnectedX is a Bluetooth-enabled 3x3 speed cube designed to enhance your solving experience. This smart cube connects to a dedicated mobile application, allowing users to track their progress, learn solving techniques, play mini-games, and compete on leaderboards. It is suitable for both beginners seeking guided instruction and experienced cubers aiming to improve their speed and accuracy.



Image: The Rubik's ConnectedX cube alongside a smartphone showing the app interface and the product box.

2. WHAT'S IN THE BOX

Verify that all items are present in the packaging:

- 1 x Rubik's ConnectedX Cube
- 1 x Information Guide

3. SETUP GUIDE

Follow these steps to set up your Rubik's ConnectedX cube and connect it to the companion app:

1. **Download the Rubik's Connected App:** Search for "Rubik's Connected" on the Apple App Store (for iOS devices) or Google Play Store (for Android devices) and install the application.
2. **Launch the App:** Open the Rubik's Connected application on your smartphone or tablet.
3. **Pair Your Cube:** Enable Bluetooth on your device. Within the app, follow the on-screen instructions to pair your Rubik's ConnectedX cube. The app will guide you through the pairing process.
4. **Cube Activation:** The center tile LED on your cube will flash for 2-3 seconds during activation. Ensure you do not rotate the cube before this activation is complete.

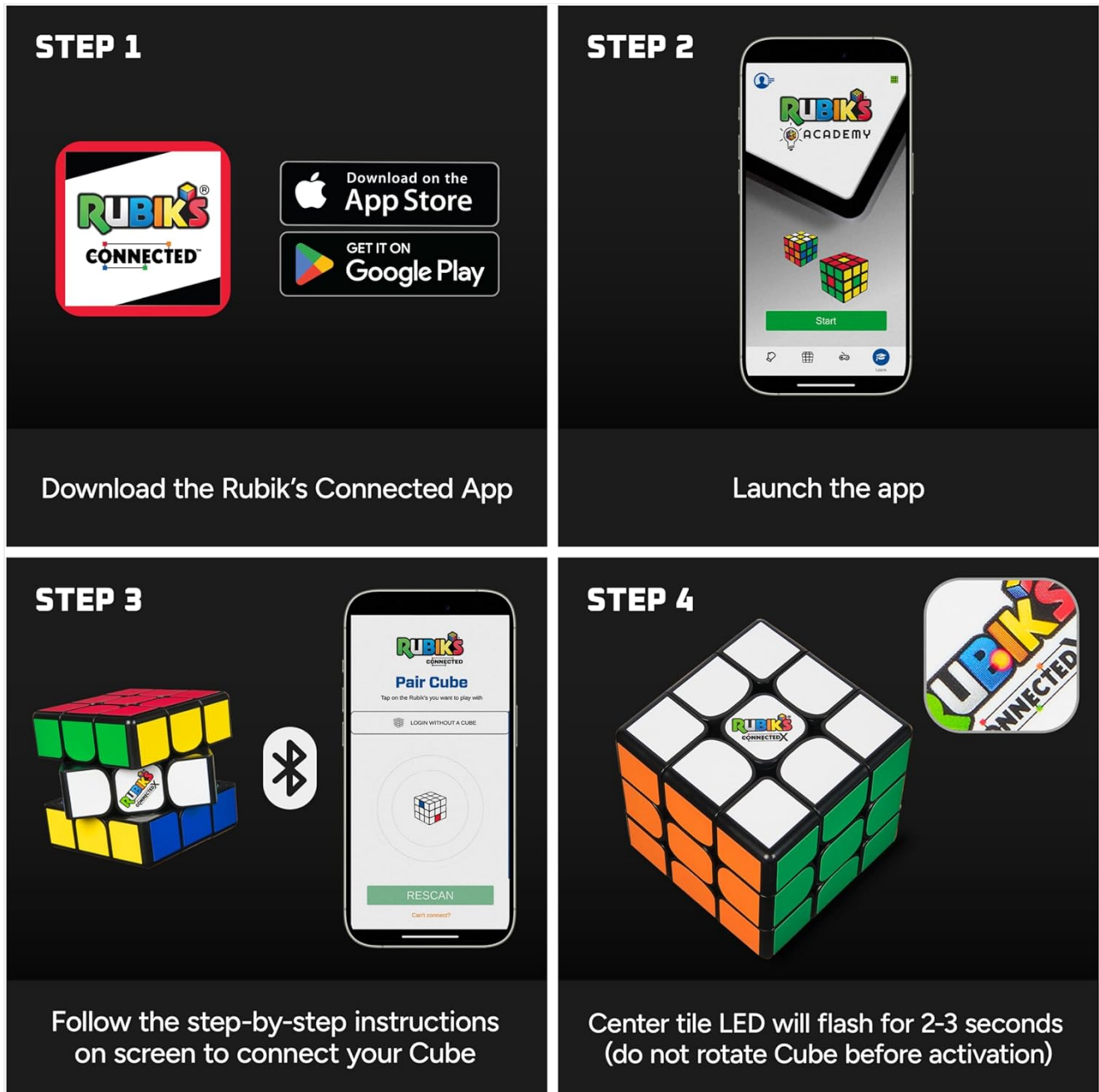


Image: Visual representation of the four setup steps: downloading the app, launching it, pairing the cube via Bluetooth, and activating the cube.

4. OPERATING INSTRUCTIONS

The Rubik's ConnectedX cube offers various functionalities through its integration with the Rubik's Connected app.


4.1 Solving and Tracking

The cube tracks your every twist and turn, providing real-time data to the app. This allows for precise tracking of

your speed and solve times with an accuracy of 0.001 seconds.



Image: A Rubik's ConnectedX cube positioned next to a smartphone showing the in-app timer during a solving session.



Tracking accuracy
of 0.001 seconds

Track your speed & solve times with
the **smartest** Rubik's Cube yet!

Image: A user holding the Rubik's ConnectedX cube, with a smartphone in the foreground highlighting the cube's precise tracking capabilities.

4.2 Guided Learning (Rubik's Academy)

For beginners, the Rubik's Connected app includes the Rubik's Academy, which provides step-by-step interactive solving guides. This feature helps users learn the basics and correct mistakes as they progress.

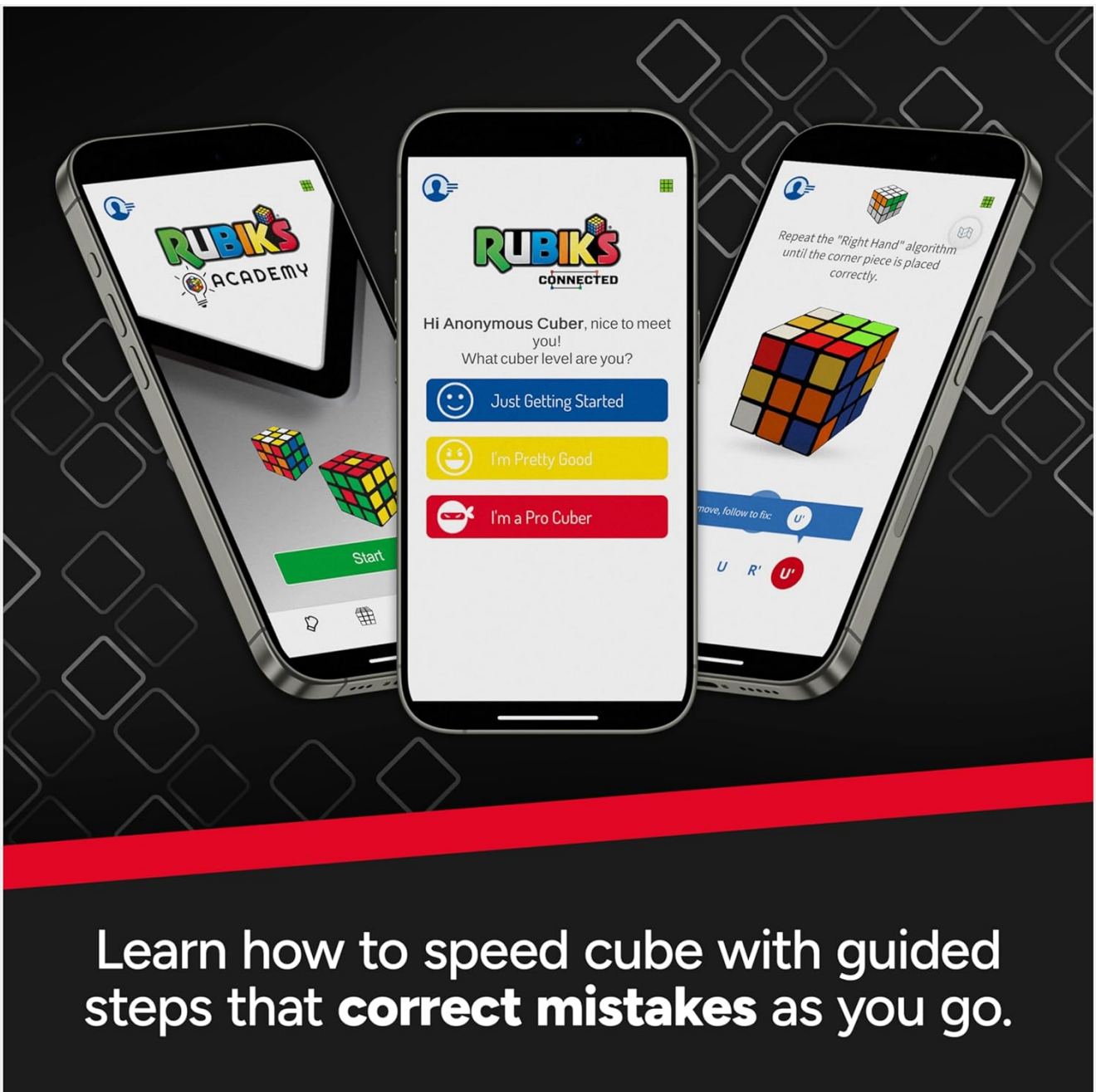


Image: Multiple smartphones showcasing the Rubik's Connected app, specifically the Rubik's Academy section designed for interactive learning.

4.3 Mini-Games and Challenges

The app offers various mini-games to provide a break from traditional solving and engage users in different ways. You can also participate in challenges and compare your performance on leaderboards.



Take a break from solving to
play four fun **mini games**.

Image: The Rubik's ConnectedX cube shown with a smartphone screen displaying a selection of mini-games available in the app.



Image: A user's hands manipulating the Rubik's ConnectedX cube, with a graphic indicating an intermediate challenge level.

5. MAINTENANCE

To ensure the longevity and optimal performance of your Rubik's ConnectedX cube, follow these maintenance guidelines:

- **Cleaning:** Wipe the cube regularly with a soft, dry, lint-free cloth to remove dust and fingerprints. Avoid using abrasive cleaners or solvents, as these can damage the cube's surface and internal components.
- **Storage:** Store the cube in a cool, dry place away from direct sunlight and extreme temperatures. High temperatures can affect the plastic and internal electronics.
- **Battery:** The cube operates on 1x AG10/LR1131F battery, which is included and pre-installed. No charging is required. Refer to the information guide for instructions on battery replacement when necessary.
- **Handling:** While designed for durability, avoid excessive force or dropping the cube, as this may damage the internal sensors or mechanical parts.

6. TROUBLESHOOTING

If you encounter issues with your Rubik's ConnectedX cube, please refer to the following common solutions:

- **Connectivity Issues:** If the cube does not connect to the app, ensure Bluetooth is enabled on your device and the cube is within range. Try restarting both the app and your device. If the problem persists, try re-pairing the cube through the app's settings.
- **App Not Responding:** Close and reopen the Rubik's Connected app. If the issue continues, try restarting your smartphone or tablet. Ensure your app is updated to the latest version.
- **Inaccurate Tracking:** Ensure the cube's battery is not depleted. If tracking seems inconsistent, try recalibrating the cube through the app's settings, if available.
- **Cube Not Turning Smoothly:** Check for any debris or foreign objects lodged between the cube's pieces. If the cube feels stiff, gentle use may help loosen it over time. Avoid applying lubricants not specifically designed for speed cubes, as this may damage the plastic.

For further assistance, please contact customer support as detailed in the Warranty and Support section.

7. SPECIFICATIONS

Product Dimensions	2.1 x 2.1 x 0.1 inches
Item Weight	7.8 ounces
Item Model Number	6069388
Manufacturer Recommended Age	8 years and up
Release Date	June 1, 2024
Manufacturer	Spin Master
Battery Type	1x AG10/LR1131F (included)

8. WARRANTY AND SUPPORT

The Rubik's ConnectedX cube is covered by the Spin Master Care Commitment. For detailed warranty information, product registration, and customer support, please visit the official Spin Master website or refer to the contact information provided in the included Information Guide.

You can typically find support resources and FAQs on the manufacturer's website:

- **Manufacturer Website:** www.spinmaster.com
- **Rubik's Official Website:** www.rubiks.com