

PRITECH PR-2888

PRITECH Hair Trimmer User Manual

Brand: PRITECH | Model: PR-2888

INTRODUCTION

Thank you for choosing the PRITECH Hair Trimmer. This manual provides essential information for the safe and effective operation, maintenance, and troubleshooting of your new grooming device. Please read it thoroughly before first use and keep it for future reference.

SAFETY INFORMATION

Please be cautious when using this trimmer on sensitive areas of the body. Do not use near water sources or immerse the device in water. This product is not intended for use on children or infants.

Always ensure the device is clean and free from hair buildup before and after each use to maintain optimal performance and hygiene.

WHAT'S IN THE BOX

Your PRITECH Hair Trimmer package includes the following components:

- PRITECH Hair Trimmer (Gray)
- Standing Recharge Dock
- USB Charging Cable (Note: Wall adapter not included)
- 4 Guide Combs (3mm, 6mm, 9mm, 12mm)
- Styling Comb
- Cleaning Brush
- Instruction Manual



Image: All components included with the PRITECH Hair Trimmer.

SETUP

Charging the Trimmer

Before first use, fully charge your PRITECH Hair Trimmer. The trimmer can be charged using the included standing recharge dock or directly via the USB cable.

- **Using the Standing Recharge Dock:** Place the trimmer into the standing dock, ensuring it sits securely. Connect the USB charging cable to the dock and then to a compatible USB power source (e.g., a wall adapter, power bank, or PC USB port).
- **Direct USB Charging:** Connect the USB charging cable directly to the trimmer's charging port and then to a compatible USB power source.

A full charge takes approximately 2 hours and provides up to 150 minutes of continuous working time.

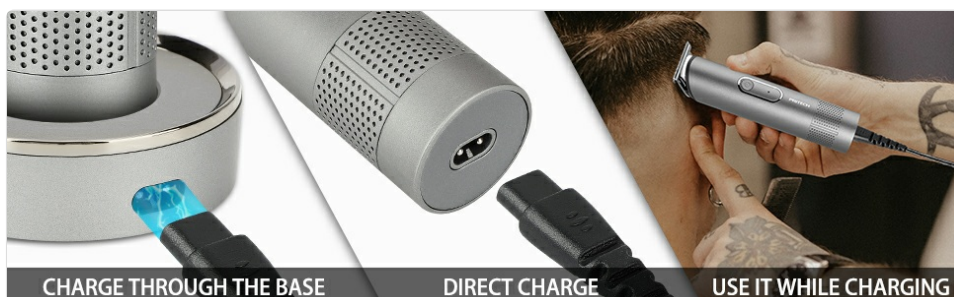


Image: Charging options for the PRITECH Hair Trimmer.

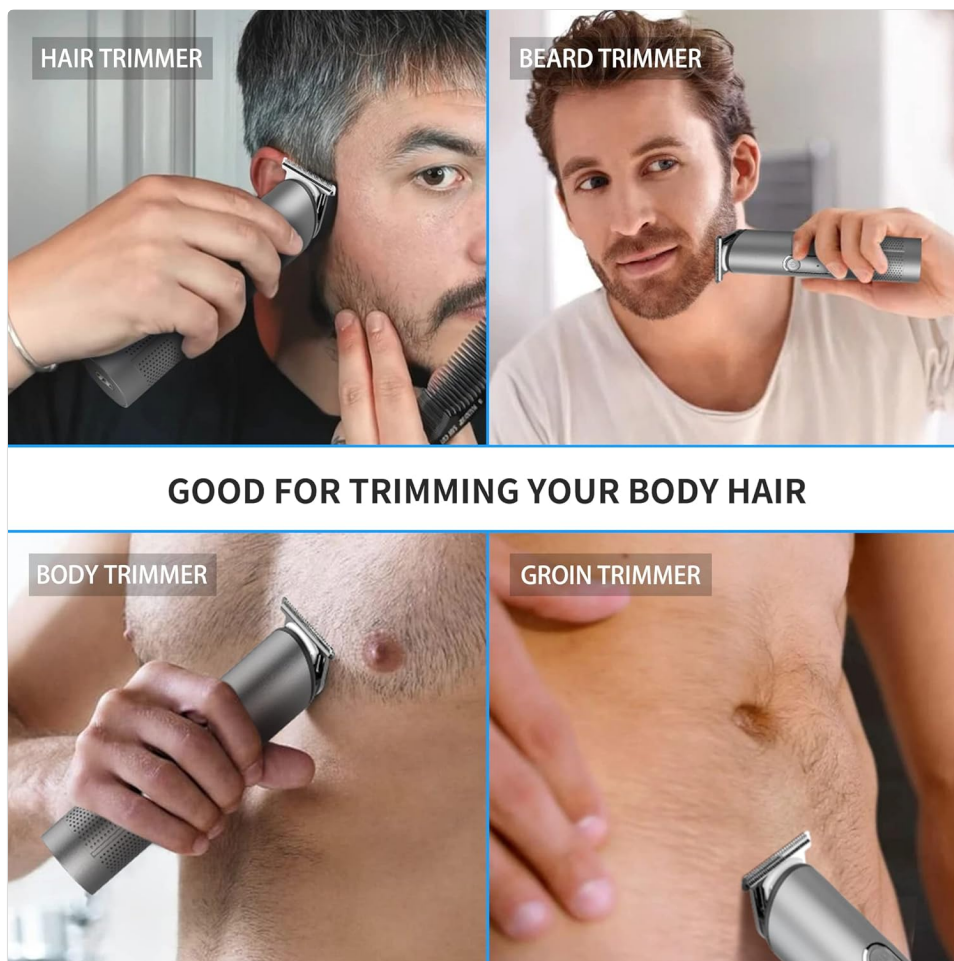


Image: Charging and operational duration of the trimmer.

OPERATING INSTRUCTIONS

Attaching Guide Combs

Select the desired guide comb (3mm, 6mm, 9mm, or 12mm) based on your preferred hair length. Align the comb with the trimmer blade and push it firmly until it clicks into place. To remove, gently pull the comb away from the blade.

Trimming Hair and Beard

The PRITECH Hair Trimmer is designed for various grooming needs, including hair, beard, body, and groin areas. Its precision self-sharpening stainless steel blades ensure a smooth and comfortable trim.

REMOVABLE AND WASHABLE



WASHABLE



**BLADES CAN
BE REMOVED**



Image: Internal components highlighting the powerful motor and precision blades.

SAFE USB STANDING RECHARGE BASE

Keep the trimmer powered at all times.



2.0
Hour
Fullcharge

150
Min
Working



Image: Versatile use for hair, beard, body, and groin areas.

For optimal results, ensure your hair is clean and dry before trimming. Move the trimmer against the

direction of hair growth for an even cut. Use the styling comb to guide hair and achieve desired styles.

Product Demonstration Video

Watch this official product video for a visual guide on using the PRITECH Hair Trimmer for various grooming tasks.

Video: Official PRITECH demonstration of the hair trimmer's features and usage.

MAINTENANCE

Cleaning the Trimmer

The PRITECH Hair Trimmer features removable and washable blades for easy cleaning. Regular cleaning ensures hygiene and extends the lifespan of your device.

- **Removing Blades:** Gently push the blade assembly forward to detach it from the trimmer body.
- **Washing:** Rinse the detached blade assembly under running water. The trimmer body is also waterproof (IPX6 rated) and can be rinsed, but avoid immersing the entire unit for extended periods.
- **Drying:** Allow all parts to air dry completely before reattaching the blade assembly and storing the trimmer.
- **Lubrication:** Periodically apply a small amount of clipper oil (not included) to the blades to maintain smooth operation.

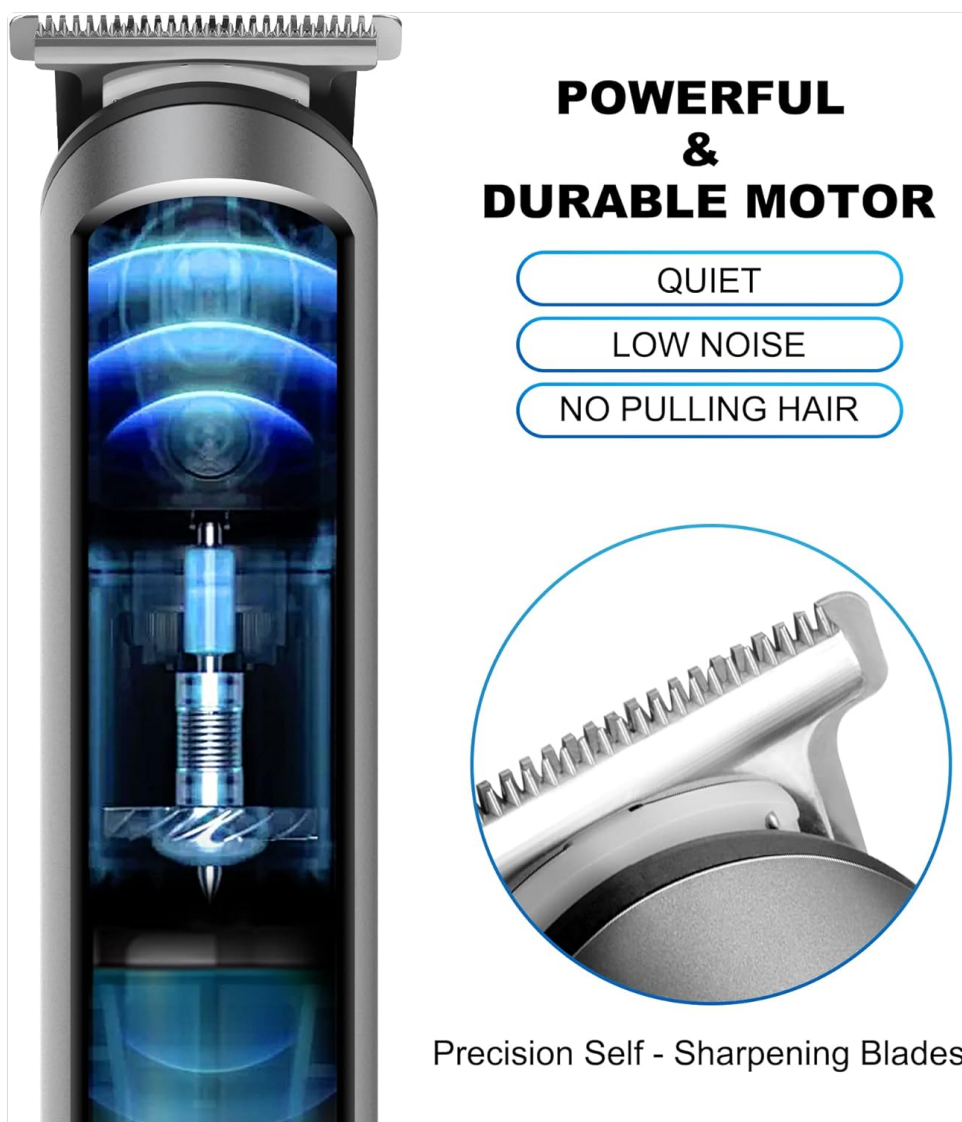


Image: Instructions for removing and washing the trimmer blades.

TROUBLESHOOTING

Problem	Possible Cause	Solution
Trimmer does not turn on or operate.	Battery is depleted.	Charge the trimmer fully (approx. 2 hours). Ensure the charging cable and power source are working correctly.
Trimmer pulls hair or cuts unevenly.	Blades are dull or clogged with hair.	Clean the blades thoroughly. Apply clipper oil if necessary. If blades are dull, consider professional sharpening or replacement if available.
Charging dock not working.	Improper connection or missing wall adapter.	Ensure the USB cable is securely connected to both the dock and a working USB power source. Note that a wall adapter is not included and must be provided by the user.
Reduced battery life over time.	Normal battery degradation.	Recharge the trimmer more frequently. If battery life becomes unacceptably short, contact customer support for options.

SPECIFICATIONS

Feature	Detail
Product Dimensions	1.38 x 1.38 x 5.91 inches
Weight	9.59 ounces
Battery Type	1 Lithium Ion battery (included)
Full Charge Time	Approx. 2 hours
Working Time	Up to 150 minutes
Power Source	Rechargeable, Cordless
Hair Type Compatibility	Fine, All
Color	Gray
Waterproof Rating	IPX6 (Washable)

WARRANTY AND SUPPORT

PRITECH offers a quality service that guarantees a 100% satisfaction solution. If for any reason you are not satisfied with your Utility Home Haircut Kit, please do not hesitate to contact us for assistance. For specific warranty details or technical support, please refer to the contact information provided on the product packaging or the official PRITECH website.

