

Manuals+

[Q & A](#) | [Deep Search](#) | [Upload](#)

manuals.plus /

- › [PETAC GEAR](#) /
- › [PETAC GEAR Tactical Medical Pouch Instruction Manual](#)

PETAC GEAR PM-P82697

PETAC GEAR Tactical Medical Pouch Instruction Manual

Model: PM-P82697

1. INTRODUCTION

The PETAC GEAR Tactical Medical Pouch is a compact and versatile utility pouch designed for carrying essential medical equipment or other small items. Constructed from durable 500D Nylon with YKK zippers, it features a removable elastic tray for organized storage and a dedicated tourniquet holder. Its design prioritizes a low profile and quick access, making it suitable for various tactical and outdoor applications.



Image 1.1: The PETAC GEAR Tactical Medical Pouch in its closed state, showcasing its compact design and front loop panel.

2. KEY FEATURES

- **Durable Construction:** Made from high-quality 500D Nylon for enhanced durability and resistance to wear.
- **Reliable Zippers:** Equipped with two-way YKK zippers for smooth and dependable operation, allowing quick access from either side.
- **Front Loop Panel:** Features a loop panel on the front for attaching patches, identification, or small hook-backed accessories.
- **Integrated Tourniquet Holder:** An elastic holder located at the bottom of the pouch provides quick access to a tourniquet.
- **Removable Elastic Tray:** The interior includes a removable elastic tray designed to securely hold and organize medical gear, allowing for rapid deployment.
- **Versatile Belt Compatibility:** Designed with laser-cut belt loops on the back, compatible with belts ranging from 1.5" to 3" in width.
- **Compact and Low Profile:** Engineered to be slim and minimize bulk, making it comfortable for daily carry and capable of being concealed under clothing.



Loop panel for attach patches and Inserts



Two way zipper with neat finishing



Elastic tourniquet holder at the bottom

Image 2.1: Detailed view highlighting the front loop panel, two-way zipper, and the elastic tourniquet holder at the bottom of the pouch.

3. SETUP AND INSTALLATION

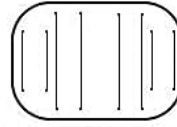
The PETAC GEAR Tactical Medical Pouch is designed for secure attachment to various belt sizes. It is specifically belt loop compatible and not MOLLE compatible.

3.1 Attaching to a Belt

1. Identify the laser-cut belt loops on the back of the pouch. These loops are designed to accommodate belts of 1.5", 1.75", 2", and 3" widths.
2. Thread your belt through the appropriate loops. For narrower belts (1.5" - 2"), use the inner set of loops. For wider belts (2" - 3"), use the outer set of loops. Ensure the pouch sits flush against your body.
3. Adjust the pouch position on your belt for optimal comfort and accessibility. The design allows it to be worn closely to the body, aiding in concealment if desired.

BACK DESIGNED WITH TWO SIZES LASER CUT BELT LOOPS

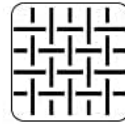
CAN BE GOING WITH 1.5" / 1.75" / 2" / 3" BELT



BELT LOOP-COMPATIBLE



YKK ZIPPER



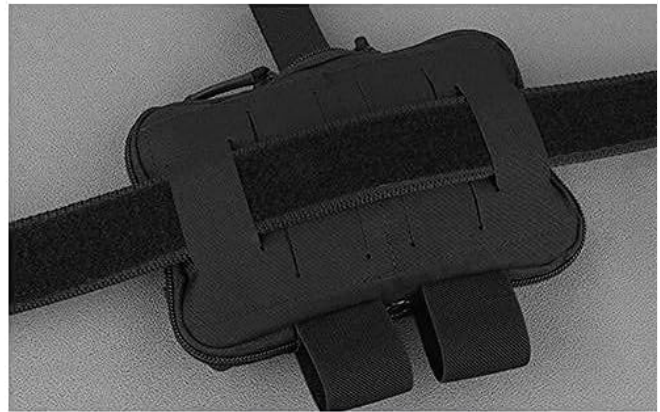
500D NYLON



TWO WAY ZIPPER



2" - 3" BELT



1.5"- 2" BELT

Image 3.1: Rear view of the pouch illustrating the laser-cut belt loops compatible with various belt widths.



CAN BE GOING WITH
1.5" / 1.75" / 2" / 3" BELT

Image 3.2: The medical pouch securely attached to a tactical belt, demonstrating its low-profile integration with other equipment.

4. OPERATION AND USAGE

The PETAC GEAR Medical Pouch is designed for quick and efficient access to its contents.

4.1 Accessing Contents

- To open the pouch, utilize the two-way YKK zippers. These can be operated with either hand, allowing for ambidextrous access.
- Once unzipped, the internal removable elastic tray can be pulled out using its designated handle. This tray keeps your gear organized and allows for rapid deployment of critical items.
- The internal loop panels (6" x 4") are suitable for attaching small objects or additional hook-backed organizers.



Image 4.1: The pouch opened, revealing the removable elastic tray designed for efficient organization and quick access to medical supplies.

4.2 Using the Tourniquet Holder

The elastic loops at the bottom of the pouch are specifically designed to hold a tourniquet for immediate access. Ensure the tourniquet is folded and secured properly within these loops to prevent accidental dislodgement while allowing for quick retrieval when needed.

4.3 Multi-Use Functionality

While primarily designed as a medical pouch, its compact size and internal organization make it suitable for various other uses, such as carrying small tools, electronics, or personal items. The front loop panel can also be used for attaching morale patches, chemlights, or battery packs.

5. MAINTENANCE

Proper care will extend the life and maintain the functionality of your PETAC GEAR Tactical Medical Pouch.

- **Cleaning:** For general cleaning, wipe the pouch with a damp cloth and mild soap. Do not use harsh chemicals or bleach. Air dry thoroughly away from direct sunlight.
- **Storage:** Store the pouch in a cool, dry place when not in use. Avoid prolonged exposure to extreme temperatures or direct sunlight, which can degrade the nylon material.
- **Zipper Care:** Periodically check the YKK zippers for debris. If they become stiff, a small amount of zipper lubricant can be applied.
- **Inspection:** Regularly inspect the stitching, fabric, and elastic components for any signs of wear or damage. Address minor issues promptly to prevent further deterioration.

6. TROUBLESHOOTING

This section addresses common concerns and provides solutions for optimal use of your pouch.

6.1 Difficulty Fitting Larger Items

The pouch is designed to be compact and low-profile. Its dimensions are 7.5" L x 4.75" T x 2" W (full pouch) and the elastic tray is 6" L x 5" W. Larger medical gear or bulky items may not fit. Consider the dimensions before attempting to store oversized equipment.



MED MEDICAL POUCH

DESIGN TO SLIM THINGS DOWN WITHOUT ELIMINATING IMPORTANT MEDICAL EQUIPMENT.

ELASTIC TRAY FOR HOLDING MEDICAL SUPPLIES

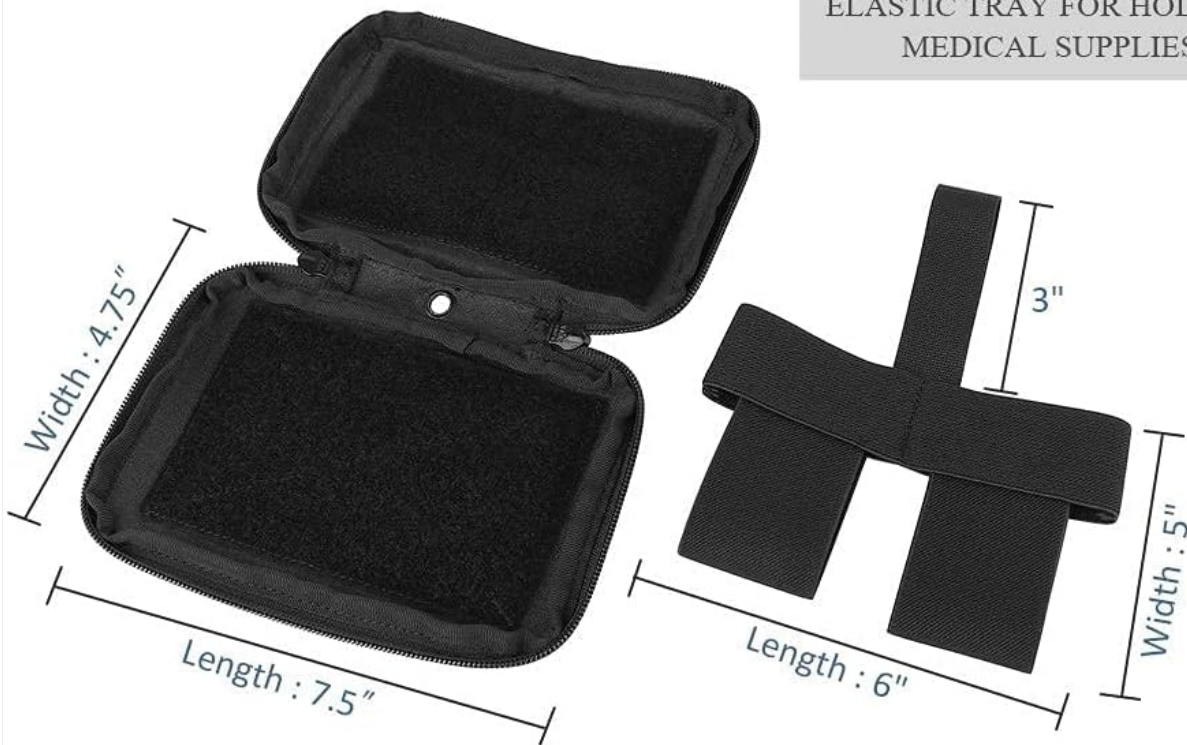


Image 6.1: Dimensional diagram of the pouch and its internal elastic tray, useful for assessing item compatibility.

6.2 Tourniquet Holder Tightness

The elastic tourniquet holder is designed to securely retain the tourniquet. If you find it excessively tight for certain tourniquet models, ensure the tourniquet is folded as compactly as possible. The tightness ensures retention during active movement. Practice deployment to ensure familiarity with the required effort.

6.3 Zipper Sticking

While equipped with YKK zippers, occasional sticking can occur due to dirt or lack of lubrication. Clean the zipper teeth with a small brush and apply a silicone-based zipper lubricant if necessary. Avoid forcing the zipper, as this can cause damage.

7. SPECIFICATIONS

Attribute	Detail
-----------	--------

Attribute	Detail
Model Name	PM-P82697
Color	BK (Black)
Material	500D Nylon
Product Dimensions (L x W x H)	7.5" x 4.75" x 1"
Elastic Tray Dimensions (L x W)	6" x 5"
Number of Pockets	1 (main compartment)
Number of Compartments	3 (internal organization)
Closure Type	YKK Zipper (Two-way)
Belt Compatibility	1.5" / 1.75" / 2" / 3" Belts (Belt loop compatible, NOT MOLLE)
Item Weight	0.13 Kilograms

8. WARRANTY AND SUPPORT

8.1 Warranty Information

The PETAC GEAR Tactical Medical Pouch comes with a **Lifetime Warranty**. This warranty covers defects in materials and workmanship under normal use. For warranty claims or inquiries, please retain your proof of purchase.

8.2 Customer Support

For any questions, concerns, or support needs regarding your PETAC GEAR product, please contact our customer service team. You can typically find contact information on the official PETAC GEAR website or through the retailer where the product was purchased.

Note: Always refer to the latest contact information provided by PETAC GEAR or your point of purchase for the most accurate support channels.