

[Manuals.plus](#) /

› [AZDOME](#) /

› AZDOME M550 Pro 4K Dash Cam User Manual

## AZDOME AZDOME M550 Pro(2CH) Front and Rear Dash

# AZDOME M550 Pro 4K Dash Cam User Manual

Model: AZDOME M550 Pro(2CH) Front and Rear Dash

Brand: AZDOME

### PRODUCT OVERVIEW

The AZDOME M550 Pro is a high-performance 4K dual dash camera system designed to capture clear and detailed footage of your travels. It features front and rear recording capabilities, 5GHz Wi-Fi for smart app control, built-in GPS for route tracking, and advanced parking modes for enhanced security.



Image: AZDOME M550 Pro 4K Dash Cam with its main components including the front camera, rear camera, and a 64GB SD card.

## What's in the Box

# Packing List



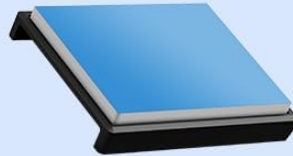
Packing Box x 1



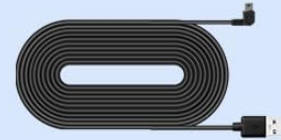
M550 Pro Dash Camera x 1



Rear Camera (6m/20ft) x 1



Spare Sliding Bracket x 1



Mini USB Power cable  
(3.5M/12ft) x 1



Electrostatic Films x 4



64GB SD Card x 1



Car Charger x 1



User Manual x 1



Cable Hiding Clips x 5



Car Wiring Tool x 1

Image: Visual representation of all items included in the AZDOME M550 Pro package.

- Front Dash Camera
- Rear Camera
- 64GB SD Card
- Car Charger; Mini USB Power Cable
- Installation Tools; User Manual

## SETUP

### Mounting the Dash Cam

The AZDOME M550 Pro dash cam is designed for easy installation on your vehicle's windshield. Use the provided sliding bracket to securely attach the front camera. For the rear camera, use the double-sided tape to mount it on the rear window. Ensure both cameras have a clear view of the road.

# Free 64GB SD Card



Image: A 64GB SD card being inserted into the side slot of the AZDOME M550 Pro dash cam.

## Power Connection

Connect the dash cam to your vehicle's power source using the provided car charger and Mini USB power cable. The cable is long enough to be routed discreetly along the vehicle's interior trim for a clean installation.

## APP WiFi Connection Guide

The AZDOME M550 Pro features 5GHz Wi-Fi for seamless smartphone integration. Follow these steps to connect your dash cam to the AZDOME app:

1. Install the AZDOME APP on your smartphone.
2. Connect to the dash cam's Wi-Fi network (SSID: M550Pro\_XXXX). The default password is 12345678.
3. Open the AZDOME APP and click 'Add Dashcam'.
4. Follow the on-screen prompts to select your Dashcam Model and start recording.



Image: A visual guide demonstrating the steps to connect the AZDOME M550 Pro dash cam to a smartphone using the AZDOME mobile application and Wi-Fi.

## OPERATING INSTRUCTIONS

### Recording Modes

The M550 Pro records in Ultra HD 4K (3840\*2160P) for the front camera and Full HD 1080P for the rear camera, ensuring clear footage of road signs and license plates day and night.

# 4K UHD+1080P Dual Recording

M550 pro dash cam provides incredibly clear and detailed footage for both front and rear views.



Image: Display of the dash cam screen showing simultaneous 4K UHD front and 1080P rear camera views.

## Smart App Control & Wi-Fi

Utilize the AZDOME app to view, playback, and manage your dash cam recordings directly from your smartphone. The 5.8GHz Wi-Fi ensures high-speed transmission, allowing you to download 800Mb videos within 10 seconds.

Image: Illustration of the dash cam's Wi-Fi connectivity with a smartphone, showing faster download speeds with 5GHz Wi-Fi.

## Built-in GPS

The built-in GPS module allows the AZDOME GPS Player to display your speed, route, latitude, and longitude data

alongside your recorded video. This provides crucial evidence and a complete record of your driving route.

# GPS Tracking

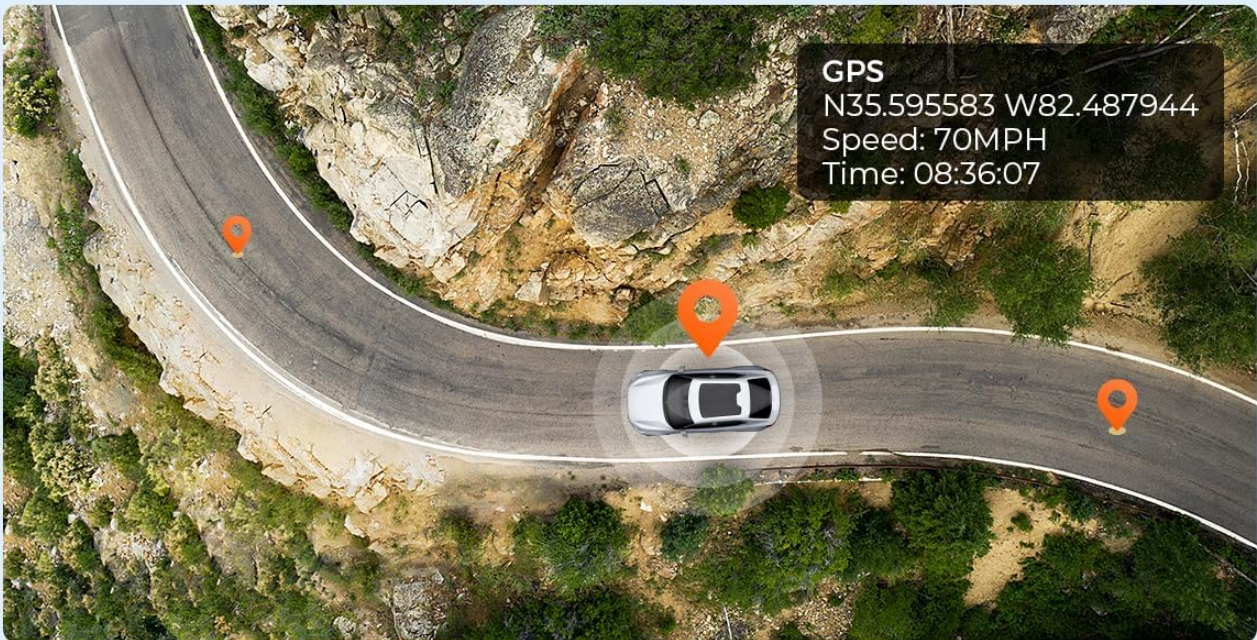


Image: A map interface showing GPS tracking data, including route and speed, integrated with dash cam footage.

## Emergency Lock & G-Sensor

In the event of a collision, the built-in G-sensor automatically detects impacts and locks the current 20-second video segment (starting 5 seconds before the incident). This ensures that all relevant footage is captured and protected from being overwritten.

# Emergency Lock & G-sensor

Save and lock a 20s video starting 5s before an incident, ensuring all relevant footage is captured.



Pre-recorded



No pre-recorded



5s pre-recording collision detection

(Before) 5 seconds

(After) 15 seconds

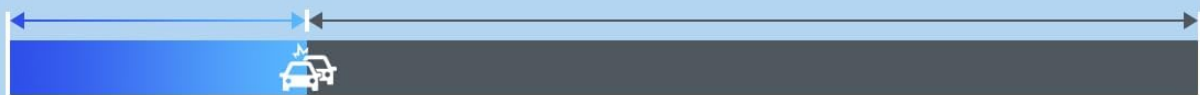


Image: Diagram illustrating the 5-second pre-recording and 15-second post-recording for emergency lock triggered by the G-sensor during a collision.

## 24 Hours Parking Mode

For continuous surveillance, the dash cam offers 24-hour parking mode. This requires a 3-lead hardwire kit (not included, search ASIN: B09G6FKZP) with an output current of 2.5A. It supports both collision detection parking mode and time-lapse parking mode.

# 24 Hours Parking Mode

Requires a 3-lead hardwire kit with an output current of 2.5A.  
Search ASIN: B096G6FKZP.



## Collision Detection Parking Mode



## Time-Lapse Parking Mode

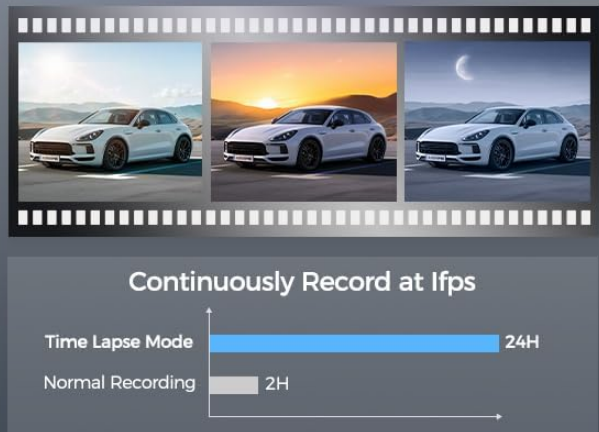


Image: Illustration of the 24-hour parking mode, showing collision detection and time-lapse recording options.

## Loop Recording

The dash cam features loop recording, which automatically overwrites the oldest unprotected files when the 64GB SD card (included) is full. This ensures continuous recording without manual intervention.

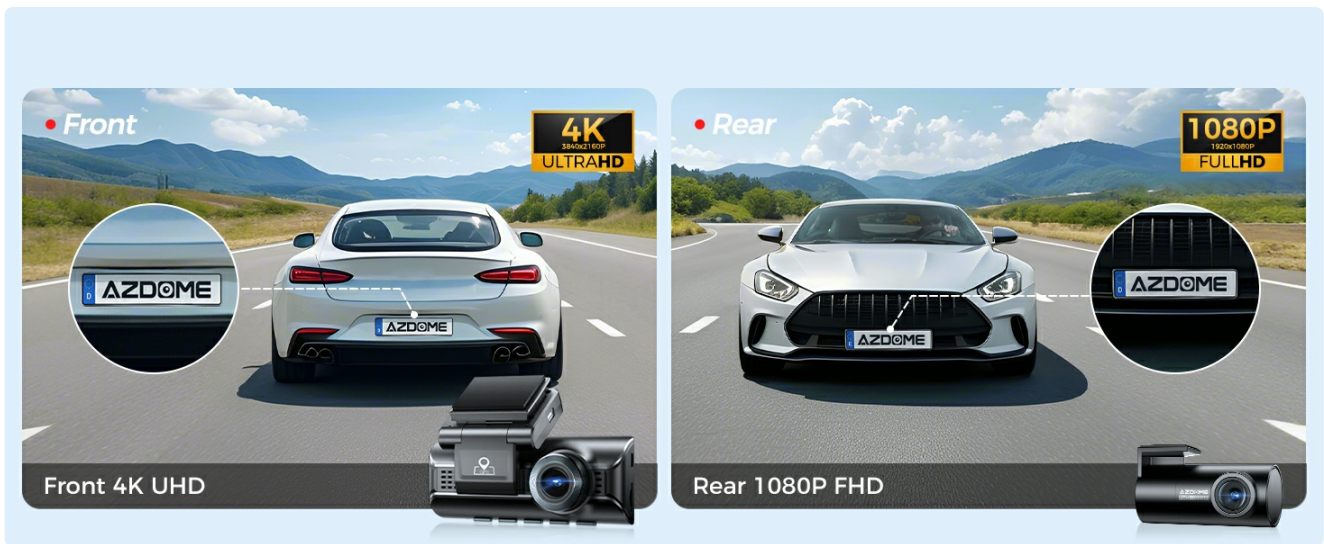


Image: Diagram explaining loop recording, showing how older files are overwritten when the SD card capacity is reached.

## Night Vision

Equipped with WDR (Wide Dynamic Range) technology and a 6-glass lens with F/NO=1.8 aperture, the M550 Pro provides enhanced night vision, capturing clearer footage in low-light conditions.



Image: Comparison of night vision quality, highlighting the M550 Pro's superior clarity in dark environments.

## MAINTENANCE

### Supercapacitor

The AZDOME M550 Pro utilizes a built-in supercapacitor instead of a traditional lithium battery. This provides enhanced safety, longer lifespan, and better resistance to extreme temperatures (-4°F to 158°F), reducing the risk of explosion in hot conditions.



Image: Visual comparison highlighting the benefits of a supercapacitor (safe, stable, longer life, extreme weather resistance) over a lithium battery.

## SD Card Management

Regularly check the health of your 64GB SD card. While loop recording manages space, it's recommended to format the card periodically to maintain optimal performance and prevent data corruption. Always use a high-quality, high-speed SD card for reliable recording.

## TROUBLESHOOTING

- **Dash Cam Not Recording on Impact:** Ensure the G-sensor sensitivity is set appropriately in the settings. If it's too low, it might not detect minor impacts. If it's too high, it might trigger too often.
- **Difficulty Connecting to App:** Verify that the Wi-Fi is enabled on the dash cam and your phone. Double-check the Wi-Fi password. Ensure your phone is not automatically switching to another Wi-Fi network with internet access.
- **Unclear License Plates:** Ensure the camera lens is clean and free from obstructions. Adjust the camera angle for optimal view. Check the video resolution settings to ensure it's set to 4K UHD for maximum clarity.
- **Dash Cam Not Turning On/Off with Vehicle:** For 24-hour parking mode, a hardwire kit is required. Without it, the dash cam will only operate when the vehicle's ignition is on.

## SPECIFICATIONS

Feature	Detail
Product Dimensions	1.3 x 3.6 x 2.4 inches
Item Weight	1.03 pounds
Item Model Number	AZDOME M550 Pro(2CH) Front and Rear Dash

Connectivity Technologies	Wi-Fi, USB
Special Features	Built-In WiFi, App Control, Automatic Incident Detection, Built-In Supercapacitor, Built-In GPS
Video Capture Resolution	2160p, 1080p
Included Components	Front Dash Camera, Installation Tools; User Manual, Rear Camera, Car Charger; Mini USB Power Cable, 64GB SD Card
Mounting Type	Windshield Mount

## OFFICIAL PRODUCT VIDEOS

### AZDOME M550 Pro-2CH 4K Dual Dash Cam 5GHz WiFi GPS

Your browser does not support the video tag.

Video: An official product video from AZDOME showcasing the M550 Pro-2CH 4K Dual Dash Cam with 5GHz WiFi and GPS features.

### AZDOME M550 Pro 4K Dash Cam Front and Rear

Your browser does not support the video tag.

Video: An official product video from AZDOME highlighting the 4K front and rear recording capabilities of the M550 Pro Dash Cam.

## WARRANTY & SUPPORT

The AZDOME M550 Pro front and rear dash camera comes with a **12-month warranty**. For any technical support or after-sales service inquiries, please email AZDOME. The AZDOME R&D team aims to provide feedback within 24 working hours.