

[Manuals.plus](#) /

> [mafiti](#) /

> mafiti Electric Fly Swatter (Model MS100 NEW) - Instruction Manual

mafiti MS100 NEW

mafiti Electric Fly Swatter (Model MS100 NEW) - Instruction Manual

1. INTRODUCTION

The mafiti Electric Fly Swatter (Model MS100 NEW) is a battery-powered device designed to effectively eliminate flying insects such as flies and mosquitoes. Its lightweight and portable design makes it suitable for both indoor and outdoor use, providing a convenient solution for pest control.



Image: The mafiti Electric Fly Swatter shown in different environments, highlighting its versatility for indoor and outdoor use.

2. SAFETY INFORMATION

- The fly swatter features a 3-layer safety mesh and a double trigger design to prevent accidental contact with the electrified inner grid.
- Keep the device out of reach of children and pets.
- Do not touch the inner net by hand when the device is in operation or electrified.

- Ensure the device is turned off when not in use.

SAFE HIGH PRESSURE, EFFECTIVE MOSQUITO KILLING

3 layers of protection, do not touch the inner net by hand in working state. Keep away from children and pets.

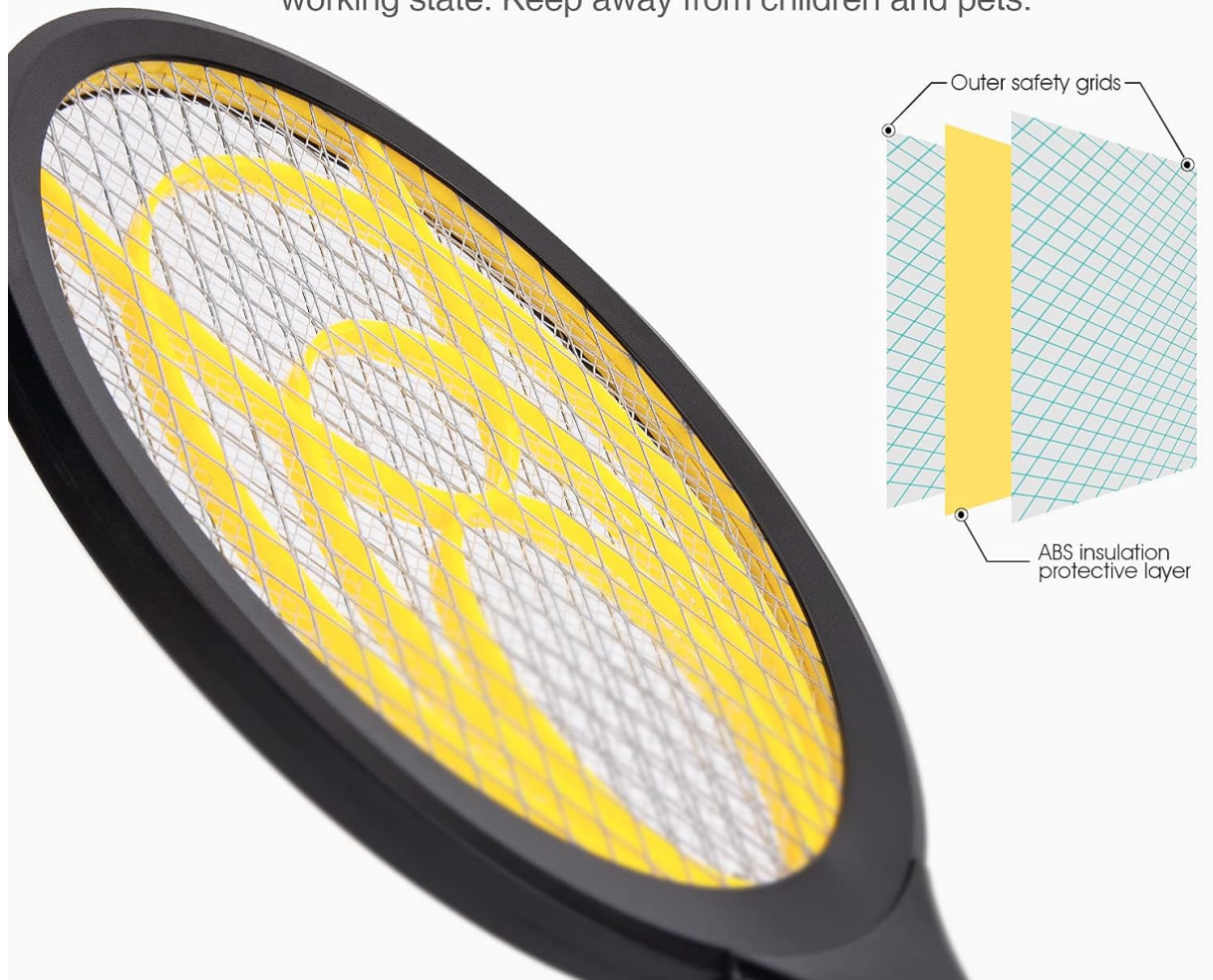


Image: A detailed view of the fly swatter's head, illustrating the protective outer safety grids and the inner ABS insulation layer.

3. SETUP: BATTERY INSTALLATION

The mafiti Electric Fly Swatter requires 2 AA batteries for operation. Batteries are not included with the product.

1. Locate the battery compartment on the handle of the fly swatter.
2. Slide open the battery compartment cover.
3. Insert 2 AA batteries, ensuring correct polarity (+/-) as indicated inside the compartment.
4. Close the battery compartment cover securely.



SIMPLY TO USE

After the 2 AA batteries is installed. Just hold the button on the handle to activate. Green LED light up to indicate it's electrified.

Image: A hand inserting AA batteries into the designated compartment on the handle of the fly swatter.

4. OPERATING INSTRUCTIONS

To operate the mafiti Electric Fly Swatter:

1. Ensure batteries are correctly installed.
2. Press and hold the activation button located on the handle. A green LED light will illuminate, indicating that the electric grid is active and ready to zap.
3. Swing the swatter towards the target insect. Upon contact with the electrified grid, the insect will be zapped.
4. Release the activation button when not actively zapping to conserve battery life and ensure safety.

Your browser does not support the video tag.

Video: A demonstration of the mafiti fly swatter in use, showing the activation and zapping action.

5. MAINTENANCE

- After use, gently tap the swatter to dislodge any insect remains from the grid.
- For stubborn debris, use a soft brush to clean the mesh. Do not use water or cleaning solutions directly on the electrified grid.

- Store the fly swatter in a dry place away from direct sunlight and moisture.
- Remove batteries if the device will not be used for an extended period to prevent leakage.

6. TROUBLESHOOTING

- **Device not activating (no green LED):** Check if batteries are installed correctly and are not depleted. Replace with fresh AA batteries if necessary.
- **Weak zapping power:** This usually indicates low battery power. Replace the AA batteries.
- **No zap on insect contact:** Ensure the activation button is fully pressed and held while swinging. The insect must make contact with the inner electrified mesh.

7. SPECIFICATIONS

Brand	mafiti
Model Number	MS100 NEW
Color	Black
Material	Plastic (ABS head)
Product Dimensions	17.3"L x 8.3"W x 1"H (43cm x 21cm x 2.3cm)
Item Weight	10.8 ounces
Power Source	2 AA Batteries (not included)
Is Electric	Yes
Target Species	Mosquito, Flies, and other flying insects



17.3inch/43cm

1inch/2.3cm

DIMENSIONS

Lightweight and Powerful

Image: Visual representation of the fly swatter's length, width, and thickness.

8. WARRANTY AND SUPPORT

For warranty information or product support, please refer to the contact details provided with your purchase or visit the official mafiti website. Keep your purchase receipt for any warranty claims.