



Manuals.plus /

› [Apple](#) /

› [Apple Watch Series 9 \[GPS 41mm\] Smartwatch User Manual](#)

## Apple Apple Watch Series 9 (GPS) 41mm MR8V3LW/A

# Apple Watch Series 9 [GPS 41mm]

## USER MANUAL

Model: MR8V3LW/A

### PRODUCT OVERVIEW

---

The Apple Watch Series 9 is designed as an essential companion for a healthy and connected life. Powered by the S9 chip, it features a superbright Always-On Retina Display and introduces a new way to interact without touching the screen. It integrates advanced health, safety, and activity features to provide insights and assistance when needed. Redesigned apps in watchOS offer more information at a glance.



Image: Apple Watch Series 9 with Starlight Aluminum Case and Starlight Sport Loop, showcasing the watch face and band.

This model is carbon neutral when paired with the latest Sport Loop, reflecting Apple's commitment to environmental responsibility. It is built for durability, being crack resistant, IP6X-certified dust resistant, and swimproof with 50m water resistance.

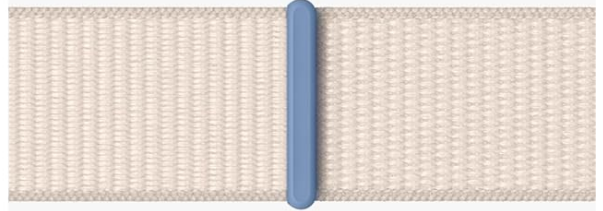
## WHAT'S IN THE BOX

---

# What's in the Box



## Sport Loop



## USB-C Magnetic Fast Charging Cable

Image: The contents of the Apple Watch Series 9 packaging, including the watch case, Sport Loop band, and the USB-C Magnetic Fast Charger cable.

- Apple Watch Series 9 Case (Starlight Aluminum)
- Watch Band (Starlight Sport Loop)
- Apple Watch Magnetic Fast Charger to USB-C Cable (1m)

## SETUP

---

### Initial Charging

Before first use, ensure your Apple Watch Series 9 is fully charged. Connect the included Apple Watch Magnetic Fast Charger to USB-C Cable to a compatible USB-C power adapter (sold separately) and plug it into a power outlet. Place the back of your Apple Watch on the magnetic charger. The watch will display a charging indicator.

### Pairing with iPhone

1. Ensure your iPhone is updated to the latest iOS version (iPhone XS or later is required).

2. Turn on your Apple Watch by pressing and holding the side button until the Apple logo appears.
3. Bring your iPhone near your Apple Watch. A pairing screen will appear on your iPhone. Tap 'Continue'.
4. Position your iPhone so that your Apple Watch appears in the viewfinder on your iPhone's screen.
5. Follow the on-screen instructions on both your iPhone and Apple Watch to complete the pairing process, including setting up a passcode and choosing preferences.

## OPERATING YOUR APPLE WATCH SERIES 9

### Display and Interaction

The Apple Watch Series 9 features a superbright Always-On Retina Display, allowing you to see information at a glance without raising your wrist. The S9 chip enables a new interaction method: the Double Tap gesture. By tapping your index finger and thumb together twice, you can answer calls, open notifications, play/pause music, and more, all without touching the screen.

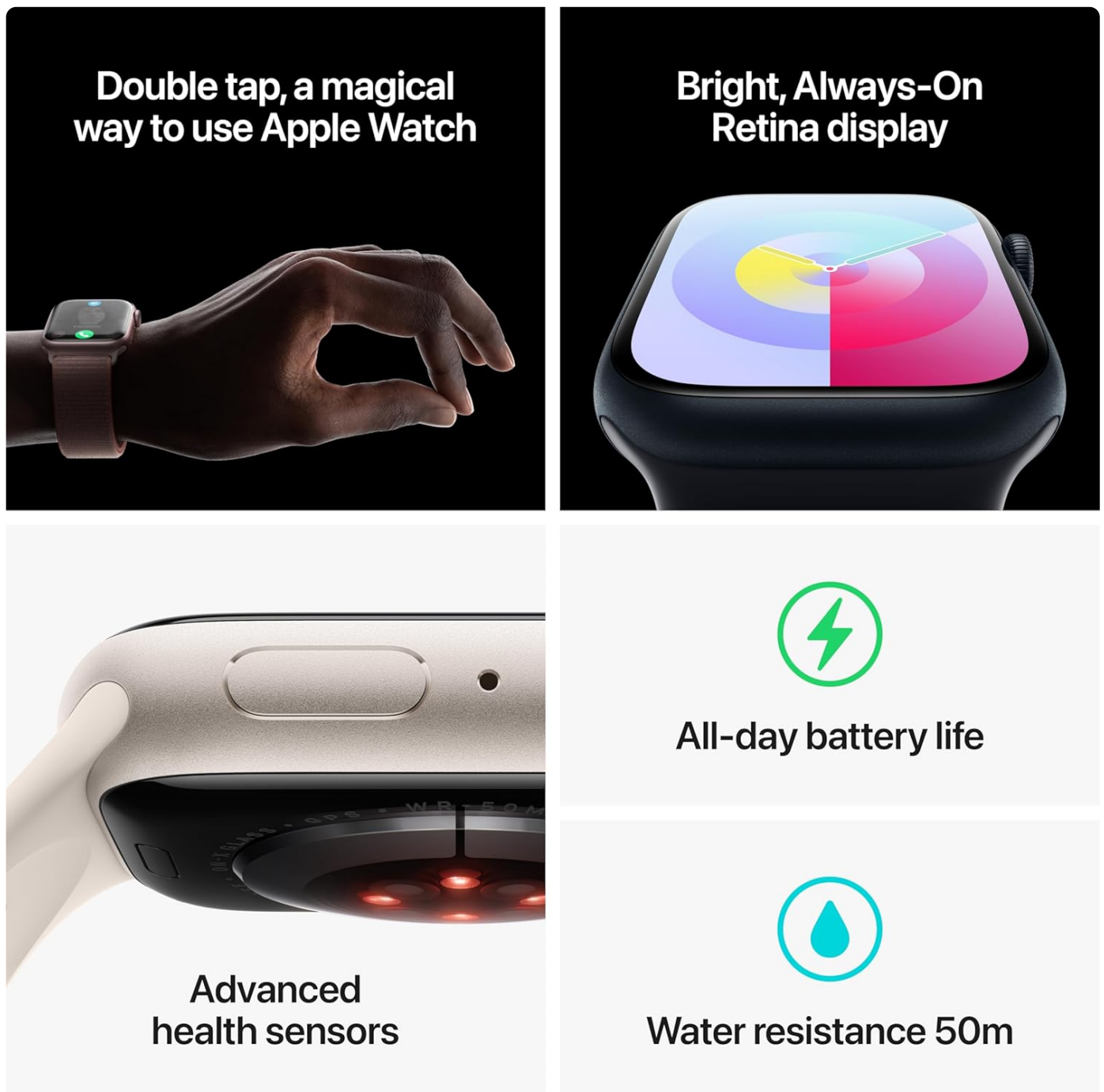


Image: A visual summary of key features including the Double Tap gesture, the Always-On Retina display, advanced health sensors, all-day battery life, and 50m water resistance.

## Health Features

- **ECG App:** Take an electrocardiogram anytime to check for signs of atrial fibrillation.
- **Irregular Heart Rhythm Notifications:** Receive alerts if your watch detects an irregular heart rhythm that could be indicative of atrial fibrillation.
- **Sleep Stages:** Monitor your sleep patterns and see how much time you spend in REM, Core, or Deep sleep.
- **Temperature Sensing:** Provides insights into overall wellbeing and supports cycle tracking for women.
- **Mindfulness:** Log your state of mind to help build emotional awareness and resilience.

## Fitness Tracking

The Workout app offers a variety of training options and advanced metrics to provide deeper insights into your workout performance. Apple Watch Series 9 includes three months of Apple Fitness+ free, offering guided workouts and meditations.



Image: A person wearing an Apple Watch Series 9 during a swim, with the watch face showing real-time workout data.

## Communication

Stay connected on the go. You can send and receive texts, take calls, listen to music and podcasts, use Siri, and get notifications directly on your wrist. The GPS model works with your iPhone or Wi-Fi to maintain connectivity.



Image: Two views of the Apple Watch Series 9 screen, one showing an incoming call and the other displaying a text message conversation.

## Safety Features

- **Fall Detection:** Automatically connects you with emergency services if it detects a hard fall and you are unresponsive.
- **Crash Detection:** Can detect a severe car crash and automatically connect you to emergency services, providing your location to dispatchers.
- **Emergency SOS:** Allows you to call for help with the press of a button.

## Customization and Compatibility

Easily customize your Apple Watch with a wide range of watch bands in various styles, materials, and colors. Fully customizable watch faces allow you to change the appearance to fit your mood or occasion. The Apple Watch works seamlessly with your other Apple devices and services, enabling features like automatic Mac unlock, Precision Finding for supported iPhone models, and Apple Pay for secure payments.

## MAINTENANCE AND CARE

---

### Durability

The Apple Watch Series 9 is designed to be tough. It is crack resistant, IP6X-certified dust resistant, and swimproof with 50m water resistance. While it can be used for shallow-water activities like swimming in a pool or ocean, it should not be used for scuba diving, waterskiing, or other activities involving high-velocity water or submersion below shallow depths.

## Cleaning

To clean your Apple Watch, wipe it with a non-abrasive, lint-free cloth. If necessary, lightly dampen the cloth with fresh water. Do not use soaps, cleaning products, abrasive materials, or compressed air. Avoid exposing the watch to excessive heat or cold.

## Battery Life and Charging

The Apple Watch Series 9 offers all-day battery life. Actual battery life varies based on usage and configuration. For optimal performance, charge your watch regularly using the provided USB-C Magnetic Fast Charger. Fast charging capabilities allow for quick power-ups.

## TROUBLESHOOTING

---

### Common Issues and Solutions

- **Watch not turning on:** Ensure the watch is charged. Connect it to the charger and wait a few minutes. If it still doesn't turn on, try a force restart (press and hold both the side button and Digital Crown for at least 10 seconds until you see the Apple logo).
- **Pairing issues:** Make sure your iPhone's Bluetooth is on and both devices are close to each other. Restart both your iPhone and Apple Watch. Ensure your iPhone is running the latest iOS version.
- **Poor battery life:** Check for apps running in the background. Reduce screen brightness or disable Always-On Display. Ensure watchOS is up to date.
- **Notifications not appearing:** Check notification settings on both your iPhone (in the Watch app) and Apple Watch. Ensure Do Not Disturb or Focus modes are not active.

### Further Assistance

If you encounter issues not covered here, or if problems persist, refer to the official Apple Support website or contact Apple customer service for detailed troubleshooting guides and personalized assistance.

## TECHNICAL SPECIFICATIONS

---

Feature	Specification
Model Name	Apple Watch Series 9 (GPS)
Item Model Number	MR8V3LW/A
Color	Starlight Aluminum Case with Starlight Sport Loop
Style	One Size - fits 130–200mm wrists
Screen Size	41 Millimeters
Operating System	watchOS
Connectivity Technology	Wi-Fi
Special Features	Activity Tracker, Cycle Tracking, GPS, Heart Rate Monitor, Voice Control
Battery Type	1 Lithium Ion battery (included)
Item Weight	9.1 ounces
Package Dimensions	9.37 x 3.11 x 1.26 inches
First Available Date	February 1, 2024

## WARRANTY AND SUPPORT

---

Apple products are covered by a limited warranty. For detailed information regarding your Apple Watch Series 9 warranty coverage, including terms and conditions, please refer to the warranty information provided with your product packaging or visit the official Apple website.

For technical support, service, and additional resources, please visit the official Apple Support website. You can find comprehensive guides, FAQs, and contact options for direct assistance.

Apple is committed to environmental responsibility. The Apple Watch Series 9, when paired with the latest Sport Loop, is a carbon neutral product. Learn more about Apple's environmental initiatives at [apple.com/2030](https://apple.com/2030).