

tectake 404782-3

tectake® Poly Rattan Lounge Set User Manual

Model: 404782-3

1. INTRODUCTION

Thank you for choosing the tectake® Poly Rattan Lounge Set. This versatile outdoor furniture set is designed to provide comfort and flexibility for your garden, patio, or balcony. Made with durable, weather-resistant materials, it offers a stylish and practical solution for outdoor relaxation. This manual provides essential information for safe assembly, proper use, and effective maintenance of your lounge set.

2. SAFETY INSTRUCTIONS

- Always assemble the product on a flat, stable surface.
- Ensure all screws and fasteners are securely tightened before use. Periodically check and re-tighten as necessary.
- Do not exceed the maximum load capacity per seat (120 kg) or for the table (45 kg).
- Keep small parts and packaging materials away from children to prevent choking hazards.
- Avoid placing hot items directly on the glass table top without protection.
- While weather-resistant, prolonged exposure to extreme weather conditions (e.g., heavy snow, strong winds) may reduce product lifespan. Consider covering or storing the set during harsh weather.

3. PACKAGE CONTENTS

Please verify that all components are present before beginning assembly:

- 2 x Corner Armchairs with Cushions
- 1 x Middle Section with Cushion
- 1 x Stool with Cushion

- 1 x Table with Glass Top
- 6 x Connecting Clips
- Assembly Material (screws, tools)
- Assembly Instructions (this manual)

4. SETUP AND ASSEMBLY

The tectake® Poly Rattan Lounge Set is designed for straightforward assembly. Follow these steps carefully:

1. **Unpack and Identify Parts:** Carefully unpack all components. Lay them out and identify each part by comparing them with the provided parts list and diagrams. Note that some parts may look similar; pay close attention to dimensions and specific screw holes.
2. **Assemble Module Frames:** For each module (corner armchairs, middle section, stool, table), assemble the powder-coated steel frames according to the diagrams. Ensure all screws are finger-tightened initially.
3. **Attach Poly Rattan Weaving:** Once the frames are loosely assembled, attach the poly rattan weaving panels to the corresponding frames.
4. **Tighten All Fasteners:** Once all parts of a module are in place, fully tighten all screws using the provided tools. Ensure a firm and stable structure.
5. **Place Cushions:** Position the comfortable cushions onto the seating modules. The covers are removable and washable.
6. **Install Table Glass Top:** Place the safety glass top onto the table frame. It is secured by four suction cups for stability.
7. **Connect Modules (Optional):** Use the provided plastic connecting clips to link the individual modules together in your desired configuration. These clips ensure the modules stay securely in place.

WIND - &
wetterfest

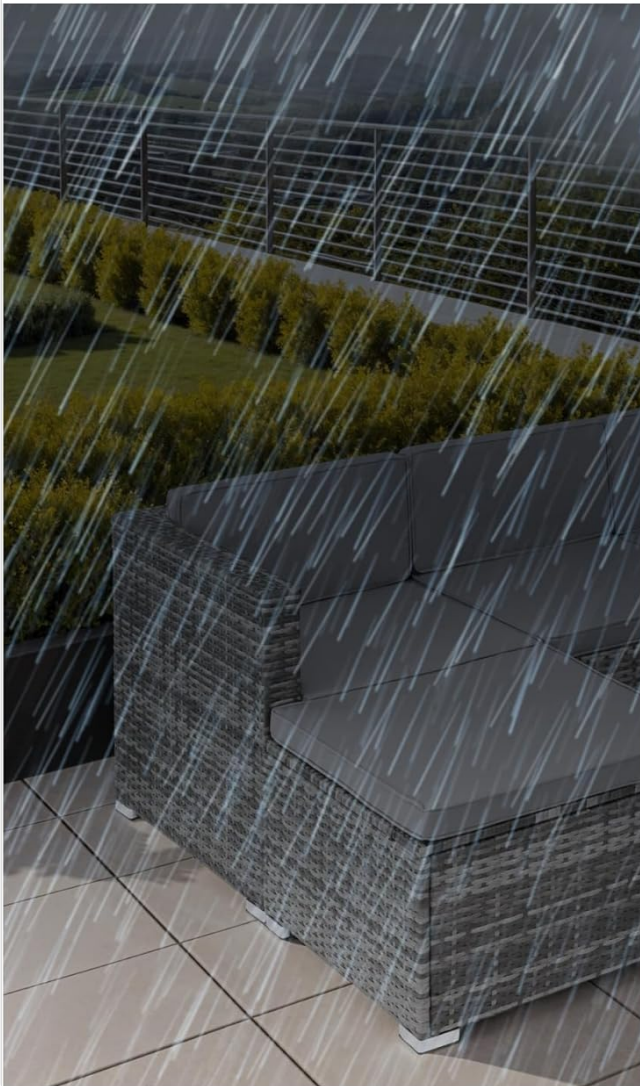


Figure 1: Technical information and dimensions diagram for the lounge set components.

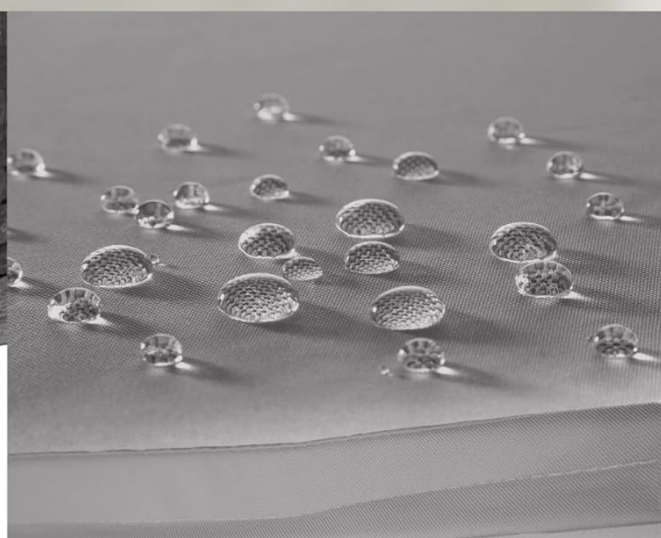


Mit Hilfe **praktischer Kunststoffclips** lassen sich die einzelnen Module beliebig miteinander verbinden.

Die robuste Platte aus hochwertigem **Sicherheitsglas** wird von **4 Saugnäpfen** absolut zuverlässig gehalten.



Die **rutschfesten Eckfüße** gewährleisten überall einen extrem festen Stand und schonen dabei jeden Boden.



Die **pflegeleichten Bezüge** sind wasserabweisend & dank der Reißverschlüsse abnehmbar und waschbar.

Figure 2: Details of the connecting clips, glass table top with suction cups, non-slip feet, and water-repellent cushion fabric.

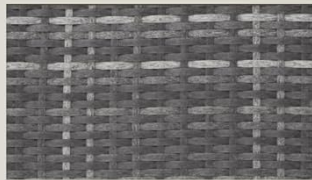
5. OPERATION AND USAGE

Your tectake® Poly Rattan Lounge Set offers flexible arrangement options to suit your outdoor space and needs:

- **Flexible Configuration:** The modular design allows you to group the five pieces (two corner armchairs, one middle section, one stool, one table) in various ways. You can create a large sofa, separate seating areas, or combine them to form a cozy lounge corner.
- **Multi-functional Stool:** The stool can be used as an additional seat, a footrest for ultimate relaxation, or even as a small side table.
- **Outdoor Use:** The set is designed for outdoor use and is weather-resistant, making it suitable for gardens, terraces, and balconies.



tectake
garden



Frei stellbare Module
lassen sich nach Wunsch
und Bedarf positionieren



Solides Stahlgestell
mit rostfreien Schrauben
aus robustem Edelstahl



Bequemes Polster-Set
aus top abgestimmten
Sitz- und Rückenkissen



Praktischer Sitzhocker
ist als extra Sitzplatz oder
als Fußablage verwendbar



Sicherheitsglasplatte
besonders strapazierfähig
und einfach abnehmbar

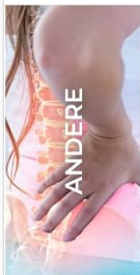


100 % Standsicherheit
dank bodenschonender
und rutschfester Eckfüße

Figure 3: The lounge set configured by a pool, showcasing its flexible design and key features.

VARIABLER Komfort.

Diese bequeme Rattan-Lounge lässt sich flexibel arrangieren und so optimal an jede Umgebung anpassen - die ideale Lösung für Deine Terrasse.



BEI UNS:
Bequeme Polster



BEI UNS:
100 % rostfrei



Figure 4: The lounge set demonstrating its modularity and comfortable design elements.

6. MAINTENANCE AND CARE

To ensure the longevity and appearance of your tectake® Poly Rattan Lounge Set, follow these care guidelines:

- **Cleaning the Frame and Rattan:** Wipe the powder-coated steel frame and poly rattan weaving with a damp cloth. For stubborn dirt, use a mild soap solution and rinse thoroughly with clean water. Avoid abrasive cleaners or harsh chemicals.
- **Cushion Care:** The cushion covers are water-repellent, removable, and washable. For general cleaning, wipe with a damp cloth. For deeper cleaning, remove the covers and wash them according to the care label instructions (typically machine washable). Allow them to air dry completely before reattaching.
- **Glass Table Top:** The safety glass top is easy to clean. Use a glass cleaner and a soft cloth to remove smudges and dirt.
- **Weather Protection:** Although the set is weather-resistant, covering it with a protective cover during prolonged periods of non-use or extreme weather (heavy rain, snow, strong UV exposure) will help preserve its condition and extend its lifespan.

- **Rust Prevention:** The steel frame is powder-coated for rust resistance. Ensure no scratches expose the bare metal, which could lead to rust. Touch up any damage promptly.

tectake
garden

Produktinformationen

ABMESSUNGEN

Totalmaße Ecksessel
62,5 x 69 x 65 cm

Totalmaße Mittelteil
54 x 69 x 65 cm

Totalmaße Hocker
61 x 61 x 42 cm

Totalmaße Tisch
61 x 61 x 37,5 cm

Maße Glasplatte
60,7 x 60,7 x 0,5 cm

TECHNISCHE DATEN

Belastbarkeit je Sitzplatz 120 kg

Belastbarkeit Tisch 45 kg

Gewicht Ecksessel ca. 9,5 kg

Gewicht Mittelteil ca. 7,5 kg

Gewicht Hocker ca. 6,5 kg

Gewicht Tisch (mit Glasplatte)
ca. 10 kg

Material pulverbeschichteter

Stahl, Polyethylen, 100 %

Polyester, Glas

LIEFERUMFANG

2 Ecksessel mit Polstern

Mittelteil mit Polstern

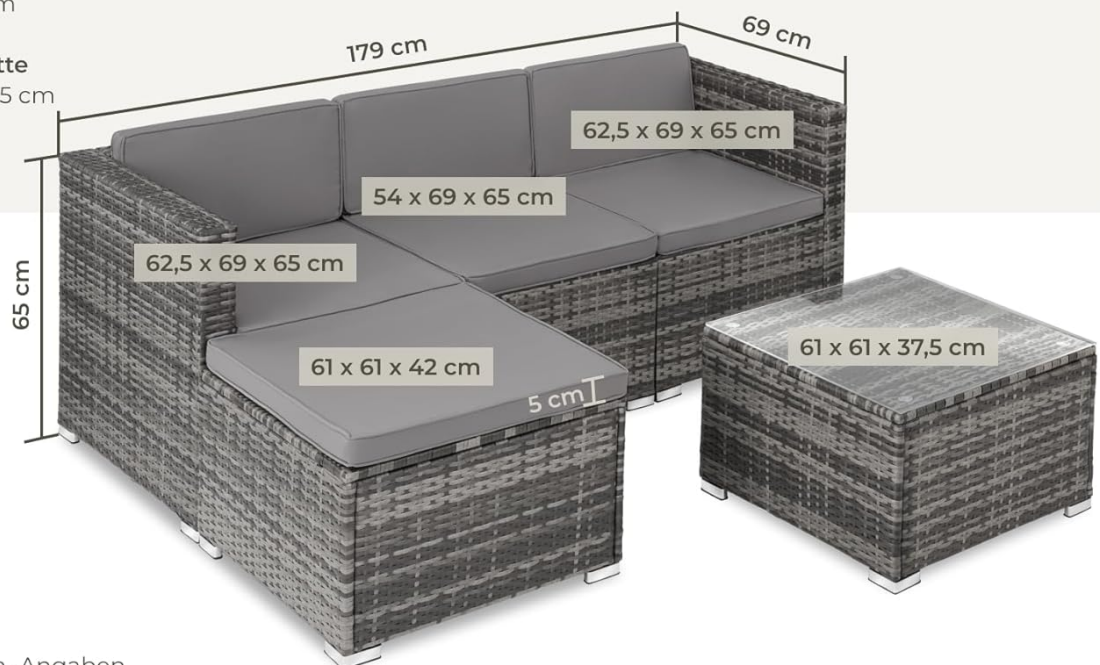
Hocker mit Polster

Tisch mit Glasplatte

6 Verbindungsklammern

Montagematerial

Montageanleitung



Alle Maße sind ca.-Angaben

Figure 5: The lounge set demonstrating its weather-resistant properties against rain and sun.

7. TROUBLESHOOTING

Here are solutions to common issues you might encounter:

- **Missing or Incorrect Parts:** If you find any parts missing or incorrect during unpacking, please contact tectake customer service immediately for assistance.
- **Difficulty with Assembly:**
 - Ensure you have correctly identified each part. Some components may look similar. Refer to the diagrams carefully.
 - Do not fully tighten screws until all parts of a module are loosely assembled and aligned. This allows for minor adjustments.
 - If a screw is difficult to insert, ensure it is aligned correctly and not cross-threaded. Do not force it.

- **Cushions Feel Thin:** While designed for comfort, individual preference for cushion thickness may vary. You may supplement with additional padding or decorative pillows for extra comfort.
- **Modules Shifting:** Ensure the connecting clips are properly attached between modules to prevent them from shifting.

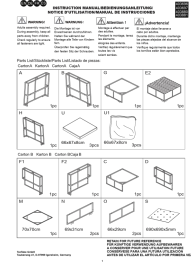
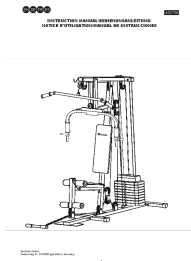
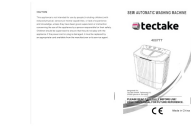
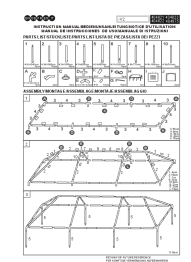
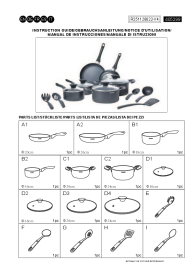
8. SPECIFICATIONS

Brand	tectake
Model Number	404782-3
Color	Grey
Material	Powder-coated Steel, Polyethylene (Poly Rattan), 100% Polyester (Cushions), Glass (Table Top)
Product Dimensions (Approx. assembled set L x W x H)	179 x 130 x 65 cm
Corner Armchair Dimensions (Approx.)	62.5 x 69 x 65 cm
Middle Section Dimensions (Approx.)	54 x 69 x 65 cm
Stool Dimensions (Approx.)	61 x 61 x 42 cm
Table Dimensions (Approx.)	61 x 61 x 37.5 cm
Glass Top Dimensions (Approx.)	60.7 x 60.7 x 0.5 cm
Load Capacity per Seat	120 kg
Table Load Capacity	45 kg
Approximate Weight (Corner Armchair)	9.5 kg
Approximate Weight (Middle Section)	7.5 kg
Approximate Weight (Stool)	6.5 kg
Approximate Weight (Table with Glass Top)	10 kg
Product Care Instructions	Wipe with damp cloth

9. WARRANTY AND SUPPORT

For warranty information, product support, or to order replacement parts, please contact tectake customer service directly. Refer to your purchase documentation for specific contact details or visit the official tectake website. No official product videos were found for this item.

Related Documents - 404782-3

	<p>TecTake Rattan Garden Furniture Assembly Instructions</p> <p>Comprehensive assembly instructions for TecTake rattan garden furniture sets, including a detailed parts list and step-by-step visual guidance. Model numbers: 403696, 403697, 403880, 403881.</p>
	<p>TecTake 402756 Home Gym Assembly and Exercise Guide</p> <p>Instruction manual for the TecTake 402756 home gym, covering assembly, safety precautions, and exercise guidance. Includes preparation tips and warm-up/cool-down routines.</p>
	<p>TecTake 400777 Semi-Automatic Washing Machine User Manual and Instructions</p> <p>This user manual provides comprehensive instructions for the TecTake 400777 semi-automatic washing machine, covering installation, operation, safety guidelines, and maintenance. Learn how to effectively wash and spin your clothes with this efficient appliance.</p>
	<p>tectake Gazebo Instruction Manual - Assembly Guide</p> <p>Comprehensive instruction manual for assembling and maintaining your tectake gazebo. Includes parts list, step-by-step assembly, location advice, care instructions, and contact information.</p>
	<p>tectake Non-Stick Cookware Set Instruction Manual & Parts List</p> <p>Comprehensive instruction manual and parts list for the tectake non-stick cookware set (Model R251128022-V4, 405299), including safety guidelines, usage instructions, and cleaning advice.</p>

