

Manuals+

[Q & A](#) | [Deep Search](#) | [Upload](#)

manuals.plus /

› [Outsunny](#) /

› [Outsunny 10' x 19.5' Pop Up Canopy Tent with Sidewalls Instruction Manual](#)

Outsunny 84C-404V00GY

Outsunny 10' x 19.5' Pop Up Canopy Tent with Sidewalls

INSTRUCTION MANUAL

1. Introduction

This manual provides essential information for the safe and effective assembly, operation, and maintenance of your Outsunny 10' x 19.5' Pop Up Canopy Tent. Please read all instructions carefully before use and retain this manual for future reference.

Important Safety Information

- This canopy is designed for shading purposes only and is not recommended for use in bad weather conditions such as heavy rain, strong winds, or snow.
- Never leave your portable canopy unattended. Always take it down before a major storm or adverse weather conditions.
- Always use both the included stakes and guy ropes when setting up your pop-up gazebo to ensure stability.
- Ensure the setup area is clear of overhead obstructions and uneven ground.
- Keep children and pets away from the canopy during assembly and disassembly.

2. Product Features

- **Easy Pop-Up Design:** Offers ample space and swift setup, ideal for quick UV30+ protection.
- **Included Sidewalls:** Features cathedral-style windows for natural light and two zippered doors for easy access. Sidewalls are removable for increased airflow.
- **Height Adjustable:** Legs lock in place with a push-button system, allowing for three height settings.
- **Outdoor Ready:** Includes ropes, stakes, and sandbags for securing to soft ground. Canopy has drainage holes to prevent water accumulation.
- **Durable Construction:** Powder-coated steel frame for water resistance.
- **Portable:** Comes with a wheeled carrying bag for convenient transport and storage.

3. Package Contents

Please verify that all components are present before beginning assembly:

- Pop-Up Canopy Frame
- Canopy Top Cover (Gray)
- Six Sidewalls with Windows and Doors
- Wheeled Carrying Bag
- Ground Nails (Stakes)
- Guy Ropes
- Leg Sandbags

4. Setup Instructions

Assembly typically requires 2-3 people for optimal ease and safety.

1. **Step 1: Open the Canopy Frame.** With at least two people, grasp opposite sides of the folded frame and slowly pull outwards, allowing the frame to expand partially.
2. **Step 2: Apply the Canopy Cover.** Drape the canopy top cover over the partially opened frame. Ensure the corners and edges align correctly with the frame structure.
3. **Step 3: Raise and Lock the Canopy Frame.** Push up on the push-button control system located on each leg to fully extend and lock the canopy frame into place. Ensure all locking mechanisms are securely engaged.
4. **Step 4: Adjust Height.** Use the push-button system on each leg to adjust the canopy to your preferred height setting. Ensure all legs are set to the same height for stability.
5. **Step 5: Add Sidewalls.** Attach the sidewalls to the canopy frame using the provided fasteners (e.g., Velcro straps, zippers). Position the windowed sidewalls and zippered door panels as desired.
6. **Step 6: Secure the Canopy.** For maximum stability, especially on soft ground, utilize the included ground nails (stakes), guy ropes, and leg sandbags. Securely anchor each leg and use the ropes to pull outward from the canopy corners, fastening them to the ground with stakes. Fill the sandbags and place them around the canopy legs.

EASY SETUP POP UP DESIGN



STEP 1:

Open the canopy frame

STEP 2:

Push up on the push-button control system to raise and lock the canopy frame

STEP 3:

Adjust the height for preferred shade coverage

STEP 4:

Add sidewalls

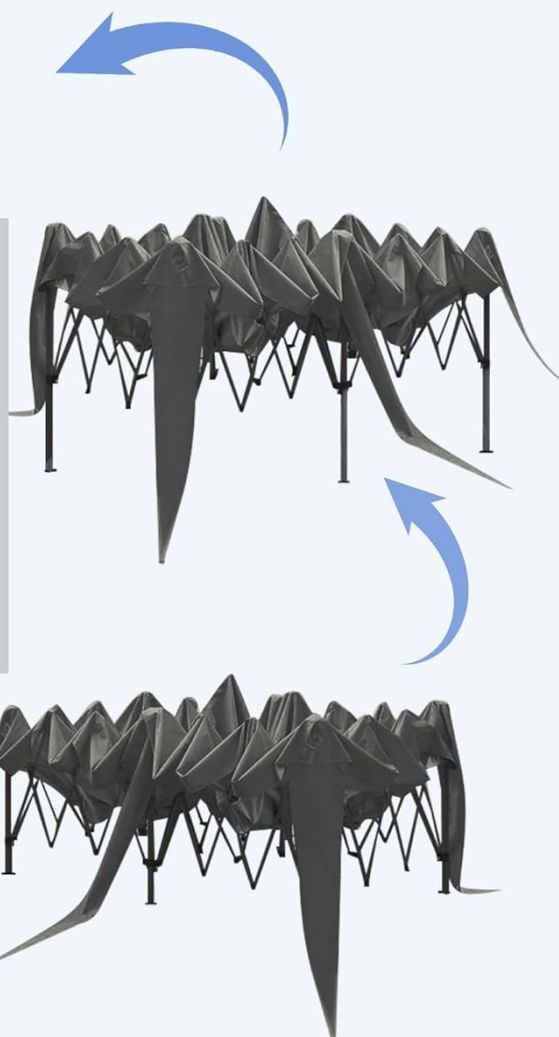


Figure 4.1: Easy Pop-Up Design Setup Steps

Your browser does not support the video tag.

Video 4.2: Official Outsunny Pop Up Canopy Setup Guide. This video demonstrates the quick and easy assembly process for the canopy, including extending the frame and attaching the cover.

5. Operating Instructions

Height Adjustment

The canopy features a 3-level adjustable height mechanism. To adjust the height, locate the push-button on each leg. Press the button and slide the leg to the desired height setting. Ensure all four legs are adjusted to the same level for stability and proper canopy tension.

3-LEVEL ADJUSTABLE HEIGHT



Figure 5.1: 3-Level Adjustable Height Mechanism

Using Sidewalls and Doors

The included sidewalls can be attached or removed as needed. The cathedral-style windows allow natural light while providing shelter. The two large zipper doors offer convenient entry and exit and can be rolled up and secured to allow for increased airflow.



Figure 5.2: Sidewalls with Windows and Doors

6. Maintenance

Cleaning

- Clean the canopy fabric with mild soap and water. Do not use harsh detergents or abrasive cleaners.
- Rinse thoroughly and allow the fabric to air dry completely before folding and storing to prevent mildew.
- Wipe down the steel frame with a damp cloth as needed.

Storage

When not in use, or during adverse weather conditions, disassemble the canopy and store it in the provided wheeled carrying bag. Ensure all components are clean and dry before storage to prolong product life.

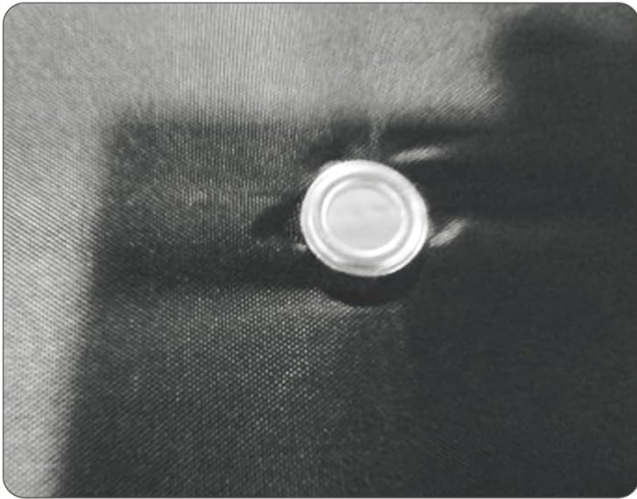


Figure 6.1: Wheeled Carrying Bag for Easy Transport and Storage

7. Troubleshooting

- **Canopy is unstable:** Ensure all legs are fully extended and locked. Verify that all stakes, ropes, and sandbags are properly deployed and secured. Always use all stabilization features provided.
- **Water pooling on canopy top:** The canopy is equipped with drainage holes to prevent water accumulation. If water still pools, ensure the canopy top is taut and evenly distributed over the frame. In heavy rain, it is recommended to take down the canopy.
- **Difficulty folding the frame:** Ensure all locking mechanisms are disengaged before attempting to fold the frame. Apply even pressure when collapsing the frame.
- **Damage from wind:** This canopy is not designed for strong winds. Always take down the canopy in windy conditions to prevent damage to the frame or fabric. Damage due to wind is not covered under warranty.

MULTIPLE STABILIZATION FEATURES



Multiple drain holes



Coated steel frame



Ground nails and ropes



Leg sandbags

Figure 7.1: Multiple Stabilization Features

8. Specifications

Attribute	Value
Brand	Outsunny
Model Number	84C-404V00GY
Material	Steel, Oxford Fabric
Color	Gray
Overall Dimensions (L x W x H)	232.25" x 117" x 112.25"
Folded Size (L x W x H)	45.75" x 13.75" x 7.75"

Item Weight	68 Pounds
UV Protection Level	UPF 30+
Water Resistance Level	Water Resistant
Assembly Required	Yes

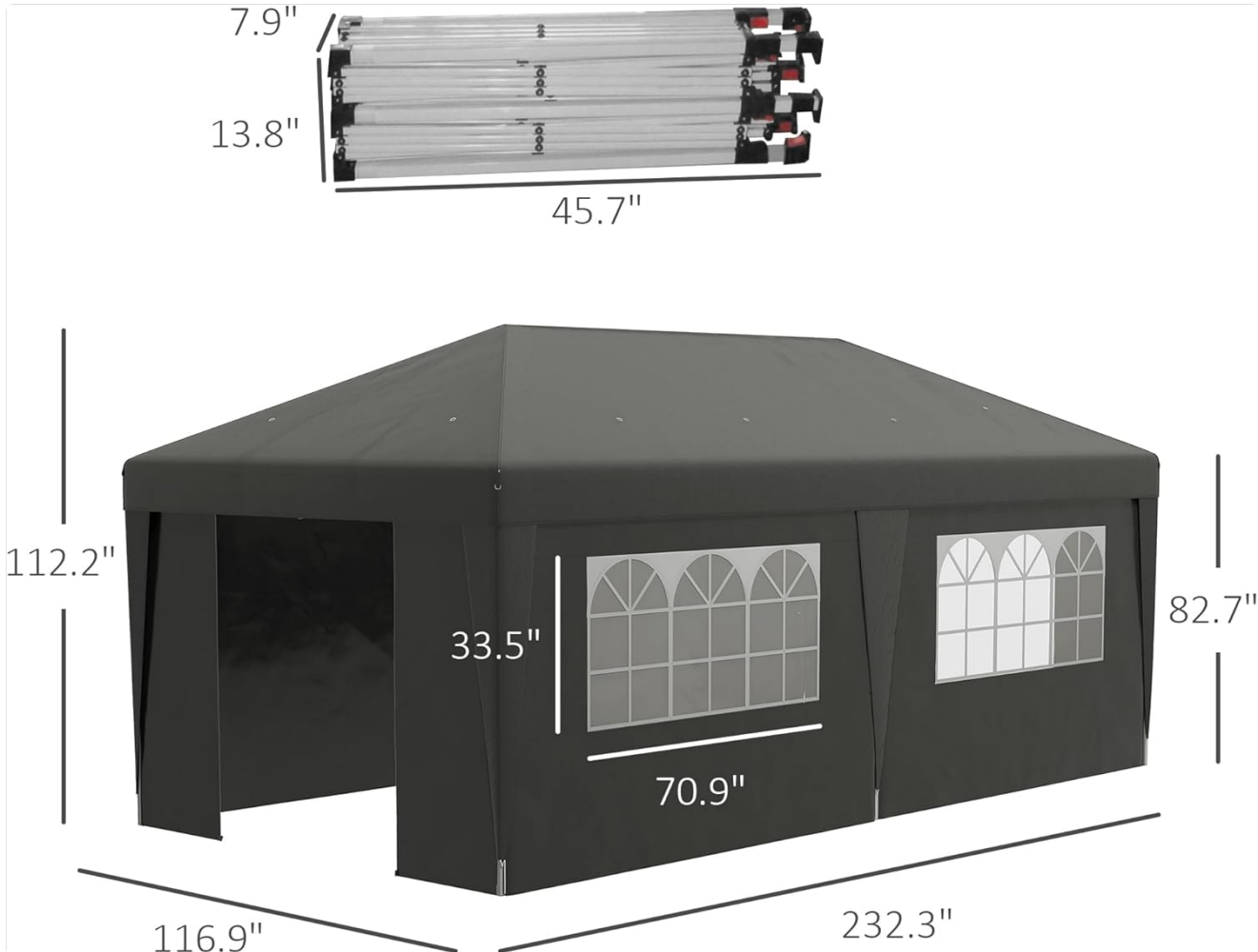


Figure 8.1: Product Dimensions

9. Warranty and Support

For warranty information or technical support, please refer to the contact details provided at the point of purchase or visit the official Outsunny website. Keep your purchase receipt as proof of purchase for any warranty claims.