

LUBEX Glow 6 A+

LUBEX Glow 6 A+ Smart IPL Laser Hair Removal Device User Manual

Model: Glow 6 A+ (D1196E)

[Introduction](#)

[Safety](#)

[Overview](#)

[Setup](#)

[Operation](#)

[Maintenance](#)

[Troubleshooting](#)

[Specifications](#)

1. INTRODUCTION

The LUBEX Glow 6 A+ Smart IPL Laser Hair Removal Device offers a convenient and effective solution for permanent hair reduction at home. Utilizing advanced Sapphire Ice-Cooling technology and smart app integration, this device provides a comfortable and personalized treatment experience for both women and men. It is designed to target hair follicles, disrupting the hair regrowth cycle for long-lasting smooth skin.

2. IMPORTANT SAFETY INFORMATION

Read all instructions and warnings before using this device.

- **Skin and Hair Color Suitability:** This device is most effective on light to medium skin tones with dark hair. It is not suitable for very dark skin tones, red hair, white/grey hair, or very light blonde hair. Refer to the skin tone and hair color chart in the app or manual to determine suitability.
- **Eye Protection:** Always wear the provided protective eyewear during treatment to prevent eye damage from the intense light flashes.
- **Skin Preparation:** Ensure skin is clean, dry, and free of any lotions, creams, deodorants, or makeup before treatment. Shave the treatment area prior to use.
- **Avoid Sun Exposure:** Do not use the device on tanned skin or skin that has been exposed to direct sunlight within 48 hours. Avoid direct sun exposure for 48 hours after treatment.
- **Sensitive Areas:** Use lower intensity levels on sensitive areas like the bikini line or face.
- **Medical Conditions:** Consult a doctor before use if you have any underlying medical conditions, skin conditions, or are pregnant/breastfeeding.
- **Device Integrity:** Do not use the device if it is damaged. Do not attempt to open or repair the device.

3. PRODUCT OVERVIEW

The LUBEX Glow 6 A+ device features a sleek design with advanced components for effective and comfortable hair removal.

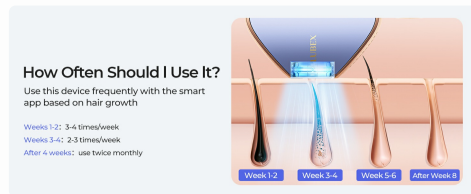


Image: Exploded view of the device showing internal components like the high power quartz lamp and sapphire light window.

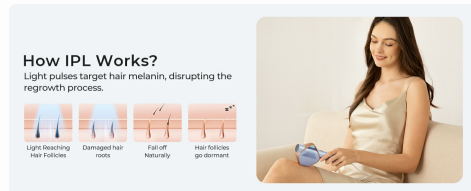


Image: Step-by-step guide on pairing the device with the CTONE app.

Device Components:

- **Sapphire Ice-Cooling Window:** Provides a cooling sensation during treatment, reducing discomfort and protecting the skin.
- **Light Outlet:** Emits the IPL flashes.
- **Power Button:** Turns the device on/off and adjusts intensity levels.
- **Indicator Lights:** Show device status and intensity level.
- **Air Inlet/Outlet:** For device ventilation.
- **Power Adapter:** Connects the device to a power source.

4. SETUP INSTRUCTIONS

1. **Prepare Skin:** Shave the area to be treated and ensure it is clean, dry, and free of any products.
2. **Connect Power:** Plug the power adapter into the device and then into a power outlet. The indicator light will illuminate.
3. **Wear Eye Protection:** Put on the provided protective goggles.
4. **Power On:** Long press the power button for 2 seconds to turn on the device.
5. **App Download (Optional but Recommended):**
Download the "CTONE" app from your smartphone's app store:
[Apple App Store](#)
[Google Play Store](#)
6. **Pair Device with App:** Open the CTONE app, enable Bluetooth on your phone, and follow the in-app instructions to connect to your LUBEX device. The app will guide you through personalized settings based on skin tone and treatment area.

Video: Official LUBEX guide on connecting the Smart IPL device with the PilotX APP for personalized hair removal.

5. OPERATING INSTRUCTIONS

5.1. Selecting Mode and Intensity

The LUBEX Glow 6 A+ offers 3 modes (Body, Face, Bikini) and 5 intensity levels. You can select these

directly on the device's LED screen or through the CTONE app for personalized recommendations.

- **Body Mode:** For larger areas like legs, arms, and back.
- **Face Mode:** For sensitive facial areas like the upper lip.
- **Bikini Mode:** For the delicate bikini zone.

Adjust the intensity level based on your skin tone and hair color. Start with a lower level and gradually increase if comfortable. The app provides recommended levels for different body parts and skin tones.



Image: Overview of the three treatment modes and their recommended uses.

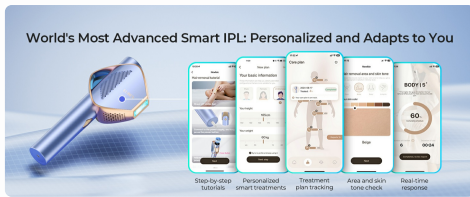


Image: Explanation of Sapphire Ice Cooling for painless treatment.

5.2. Treatment Application

1. Place the device vertically at a 90-degree angle against your skin, ensuring full contact with the light outlet.
2. Press the flashing button to emit a flash.
3. Move the device to the next area and repeat.
4. **Continuous Flash Mode (Auto-Glide):** For larger areas, long press the flashing button to activate continuous flashes. Glide the device slowly over the skin.
5. **Single Flash Mode (Manual):** For precise treatment on smaller or curved areas, press the flashing button for each flash.

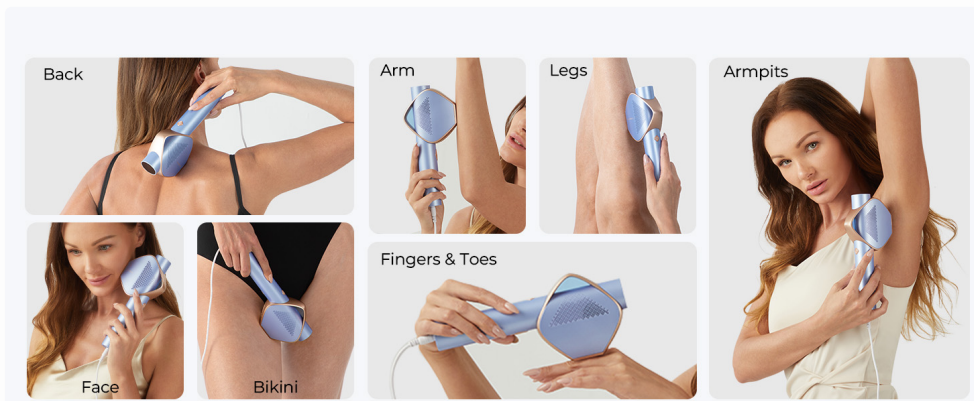


Image: Examples of device usage on different body parts for zone-specific hair removal.

5.3. Treatment Schedule

For optimal results, follow a consistent treatment schedule:

- **Weeks 1-2:** 3-4 times per week.
- **Weeks 3-4:** 2-3 times per week.
- **After 4 weeks:** Use twice monthly for maintenance.

The smart app can help you track your progress and remind you of upcoming sessions.

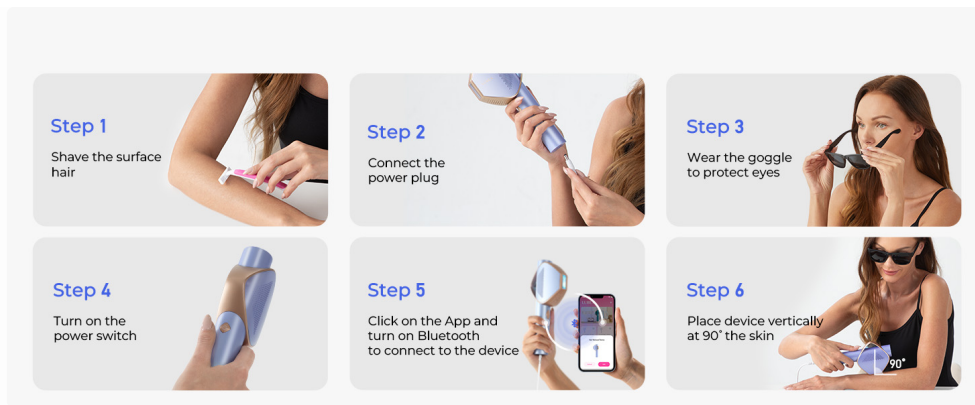


Image: Recommended usage frequency for the LUBEX IPL device.

Video: LUBEX laser hair removal with Sapphire ice cooling touch, demonstrating the cooling feature during use.

6. MAINTENANCE

Proper maintenance ensures the longevity and effectiveness of your LUBEX Glow 6 A+ device.

- **Cleaning:** After each use, clean the light outlet with the provided cleaning cloth to remove any hair, dust, or residue. Ensure the device is unplugged before cleaning.
- **Storage:** Store the device in a cool, dry place away from direct sunlight and out of reach of children.

7. TROUBLESHOOTING

If you encounter issues with your LUBEX Glow 6 A+ device, refer to the following common solutions:

- **Device Not Turning On:** Ensure the power adapter is securely connected to both the device and the power outlet. Long press the power button for 2 seconds.
- **No Flash:** Ensure the device is in full contact with your skin. The light outlet must be completely covered by the skin for a flash to occur. Check if the device is in continuous flash mode or single flash mode.
- **Discomfort/Pain:** Reduce the intensity level. Ensure your skin tone and hair color are suitable for IPL treatment. The Sapphire Ice-Cooling should minimize discomfort.
- **App Connection Issues:** Ensure Bluetooth is enabled on your smartphone and the device is powered on. Try restarting both the app and the device.
- **No Visible Results:** Consistent use according to the recommended schedule is crucial. Hair reduction is a gradual process. Ensure you are using the correct intensity level for your skin and hair type.

For further assistance, please contact LUBEX customer support.

8. SPECIFICATIONS

Feature	Detail
Model	Glow 6 A+ (D1196E)
Product Dimensions	5.02 x 4 x 9 inches

Weight	2.25 Pounds
Energy Output	Up to 24 Joules
Intensity Levels	5 levels
Wavelength	600-1200 nm
Flash Speed	Up to 130 flashes/min (0.3 seconds)
Cooling Technology	Sapphire Ice-Cooling (maintains 41°F / 5°C)
Pulse Lifespan	1 Million flashes
App Integration	CTONE App (PilotX APP) for personalized plans and tracking

9. WARRANTY AND SUPPORT

LUBEX is committed to providing high-quality products and excellent customer service.

- **Warranty:** Please refer to the product packaging or the official LUBEX website for specific warranty details.
- **Customer Support:** For any questions, concerns, or technical assistance, please contact LUBEX customer service. LUBEX offers 24/7 service to assist you.
- **Online Resources:** Visit the [LUBEX Store on Amazon](#) for additional product information and support.