



[Manuals.plus](#) /

› [Inefala](#) /

› Inefala Android Car Stereo User Manual for Toyota Prius (2010-2015) with JBL - Model B0CSSMSPQN

Inefala B0CSSMSPQN

Inefala Android Car Stereo User Manual

For Toyota Prius (2010-2015) with JBL - Model B0CSSMSPQN

1. INTRODUCTION

This manual provides detailed instructions for the installation, operation, and maintenance of your Inefala Android Car Stereo. Please read this manual thoroughly before installation and use to ensure proper functionality and to maximize your user experience.

This unit is designed for Toyota Prius models manufactured between 2010 and 2015, specifically those with left-hand drive and compatible with JBL power amplifier systems. Please verify your vehicle's compatibility before proceeding with installation.



Figure 1.1: Inefala Android Car Stereo Unit and Included Accessories

2. SETUP AND INSTALLATION

2.1 Package Contents

Before beginning installation, ensure all components listed below are present in your package:

- Inefala Android Radio Unit
- Power Cable
- CANBUS Decoder
- Dual RCA Harness
- GPS Antenna
- AHD Backup Camera
- Rear Camera Input Cable
- External Microphone
- Dual USB Cable
- Installation Tools & Accessories

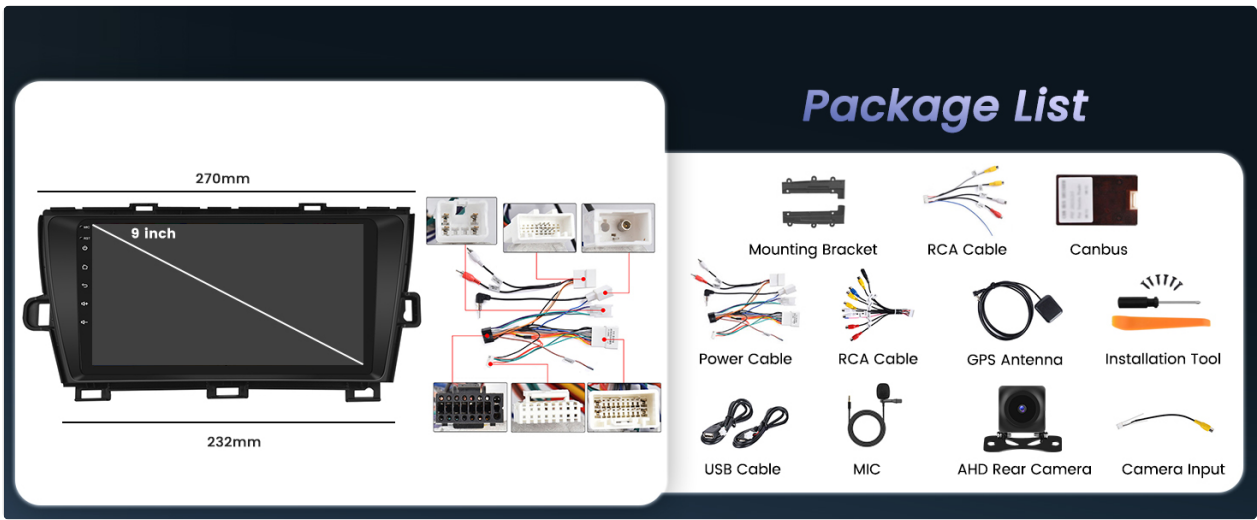


Figure 2.1: Package List

2.2 Compatibility Check

This unit is compatible with Toyota Prius 2010-2015 models (left-hand drive) that support the original JBL power amplifier and steering wheel controls. Please check the power cable port on your vehicle and compare it with the provided cables. If the power cord does not fit, contact customer support.



Figure 2.2: Compatible and Incompatible CD Player Interfaces

2.3 Unit Assembly

Assemble the mounting brackets to the main unit as shown in the diagram.

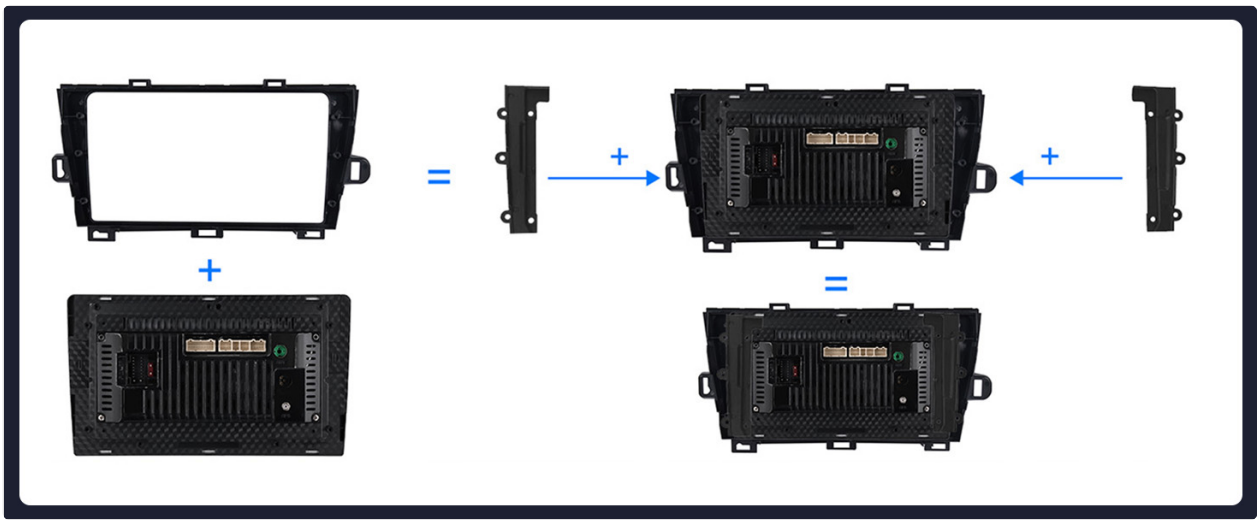


Figure 2.3: Unit Assembly Diagram

2.4 Wiring Connections

Refer to the port details and wiring diagrams for correct connections.

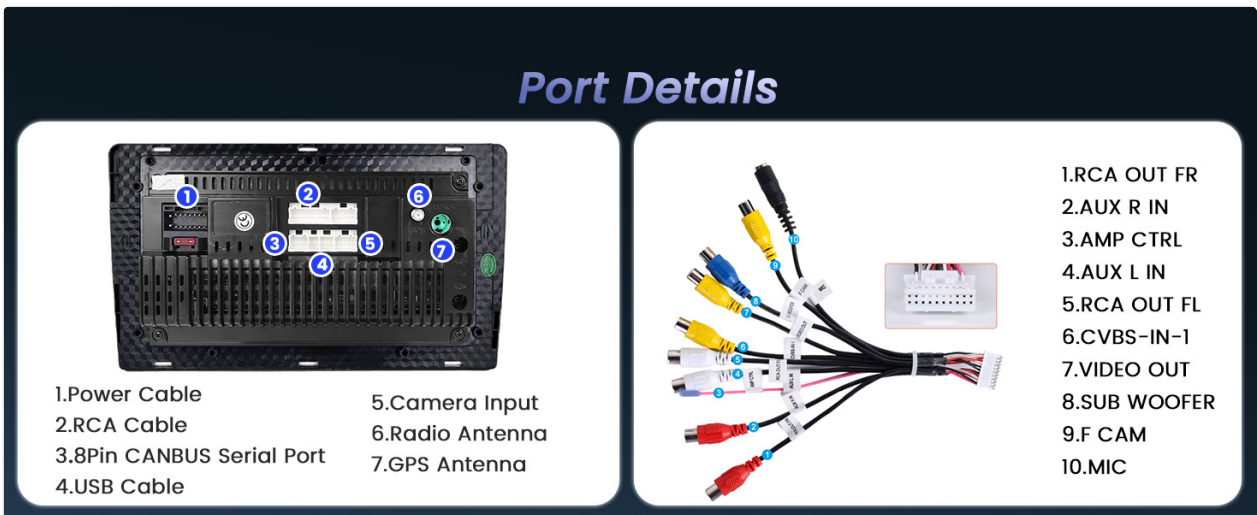


Figure 2.4: Port Details and Connections

2.4.1 Reversing Camera Wiring

The reversing input must be connected even if the reversing camera is not used, as it can affect WiFi and Bluetooth signals. Follow these steps:

1. Connect Cable 1 and Cable 5 to the positive pole of the car reversing light cable.
2. Connect Cable 2 to the negative pole of the car reversing light cable.
3. Connect Cable 3 and Cable 4 to the reverse trigger wire of the power cable (labeled "Reverse/Back"). If this wire is not present, pull it out and connect it.



Figure 2.5: Reversing Camera Wiring Diagram

2.4.2 Steering Wheel Control Wiring

- **With CANBUS box:** Connect the 20-pin white port in the power cable to the CANBUS itself. Connect the remaining 8-pin white port to the corresponding port on the back of the radio. Match the car model in CANBUS Matching Path: Settings > Factory Setup (Password 1234) > Can Settings.
- **Without CANBUS box:** Activation of steering wheel controls requires key learning in settings.



Figure 2.6: Steering Wheel Control Setup

2.5 Post-Installation Quick Test

After installation, perform a quick test:

1. Combine the red and yellow wires of the car stereo and connect them to the positive pole of the 12V battery.
2. Connect the black wire to the negative pole of the battery.
3. Check if the screen lights up. If it does, the car stereo is functioning normally. If not, recheck the installation procedure.

Installation tips & How to reach us?

A quick test before installation:

1. The red and yellow wires of the car stereo are combined first, then connected to the positive pole of the 12V battery. The black wire is connected to the negative pole of the battery.
2. After 2 seconds, check the car stereo, if the screen lights up, it means that the car stereo is functioning normally. If you test that the car player turns on, but the device does not work after installation, recheck the installation procedure.

Warm tips:

1. Please double-check that the power cable port we provide matches the port of your car
2. No need to connect the all sockets if they don't fit, because the harness may contains spare sockets to match different car model years
3. If the wiring harness is different or the accessories are missing or damaged, please refer them to our CS Department for processing, and we will resend them for you

STEP 1

Add to Cart

Buy Now

Ships from Amazon
Sold by **Inefala Direct**
Returns 30-day refund/replacement
Support Product support included

STEP 2

Have a question for Inefala Direct?

Ask a question

About Seller
 Welcome to Inefala store
Why Choose Us?

- Professional Technical Support Team & Customer Service Team to ensure your shopping experience.
- If you encounter any difficulties or doubts in installing or using the products of our store, you can contact our sellers (Inefala) through the Amazon platform or contact our customer service team by email: inefalaservice@1688.com
- All messages will be replied within 24 HOURS, regardless of holidays.
- One Year Warranty, from the beginning to the end of the car...

Figure 2.7: Quick Test and Support Information

3. OPERATING INSTRUCTIONS

3.1 System Overview

The Inefala car stereo features an 8-Core processor, 6GB RAM, and 128GB ROM, running on Android 15. It includes a 9-inch HD touch screen with 1280x720 resolution, supporting 1920x1080P video playback. The fully capacitive touch screen ensures easy operation.

For Toyota Prius (LHD) 2010-2015

- 🤖

Latest Android
- 📊

6+128G 8-Core
- 📶

32-band DSP



Figure 3.1: System Features Overview

3.2 CarPlay & Android Auto & Mirror Link

The unit supports wireless and wired CarPlay and Android Auto for voice-assisted control and access to phone features like music, navigation, calls, and messages. Mirror Link functionality is also available.

- **Wireless Connection:** Turn on your phone's Bluetooth, search for the car stereo's Bluetooth, and pair it. Open the "CPLink"/"Android Auto" app on the car stereo. The connection will establish automatically.
- **Wired Connection:** Connect your iOS/Android cell phone via the original USB cable. Open the "CPLink"/"Android Auto" app on the car stereo. The connection will establish automatically.

Note: For some Samsung and Huawei phones, Android Auto and Mirror Link functionality may be limited. Ensure your phone supports Google Services and has the "Android Auto" app installed.

Wireless Carplay & Android Auto



Wireless Connection:

1. Turn on your phone's Bluetooth, search for the car stereo's Bluetooth and pair it.
2. Click the "CPLink" / "Android Auto" app on the car stereo. (If your cell phone is the Android system, you need to install the "Android Auto" app in advance).
3. Wait for a few seconds and the CarPlay/Android Auto wireless connection will happen automatically.
4. After the first successful connection, simply turn on Bluetooth, and it will start automatically. And you can easily use functions like voice assistant, navigate, play music and make/receive phone calls.

Wired Connection:

1. Connect your iOS / Android cell phone via original USB cable
2. Click the "CPLink" / "Android Auto" app on the car stereo. (If your cell phone is the Android system, you need to install the "Android Auto" app in advance).
3. Wait for a few seconds and the CarPlay/Android Auto wired connection will happen automatically. And you can easily use functions like voice assistant, navigate, play music and make/receive phone calls.

Note: For Huawei and some Samsung phones, these are not supported. The phone needs to support Google Services and install the "Android Auto" app.



Apple CarPlay
Bluetooth or USB Connection



Android Auto
Bluetooth or USB Connection

Figure 3.2: CarPlay and Android Auto Interface

Phone Mirror Link



Support System



Figure 3.3: Phone Mirror Link

3.3 GPS Navigation & WiFi Hotspot

The stereo has a built-in GPS module. Navigation software like Waze and free offline maps can be used. Connect to WiFi or a mobile hotspot to use online maps and download apps from the Play Store (e.g., YouTube, TikTok).

GPS Navigation



WiFi or Hotspot

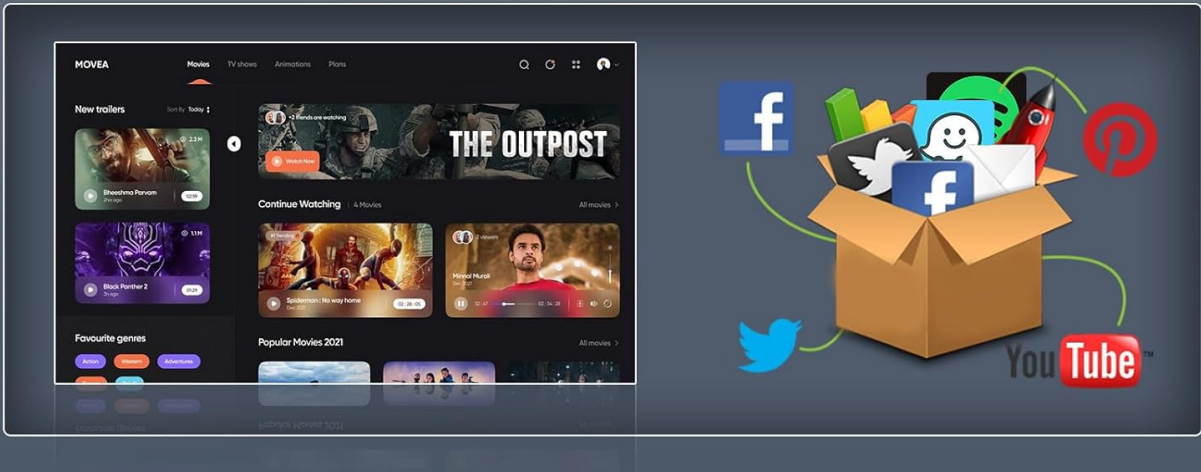


Figure 3.4: GPS Navigation and WiFi Connectivity

3.4 Bluetooth & FM/RDS Radio

Bluetooth 5.0 supports hands-free calling, phone book download, and music playback. The built-in microphone ensures clear communication. The stable FM/RDS radio allows presetting 18 stations for news, weather, and traffic updates.

Bluetooth 5.0



FM/RDS Radio

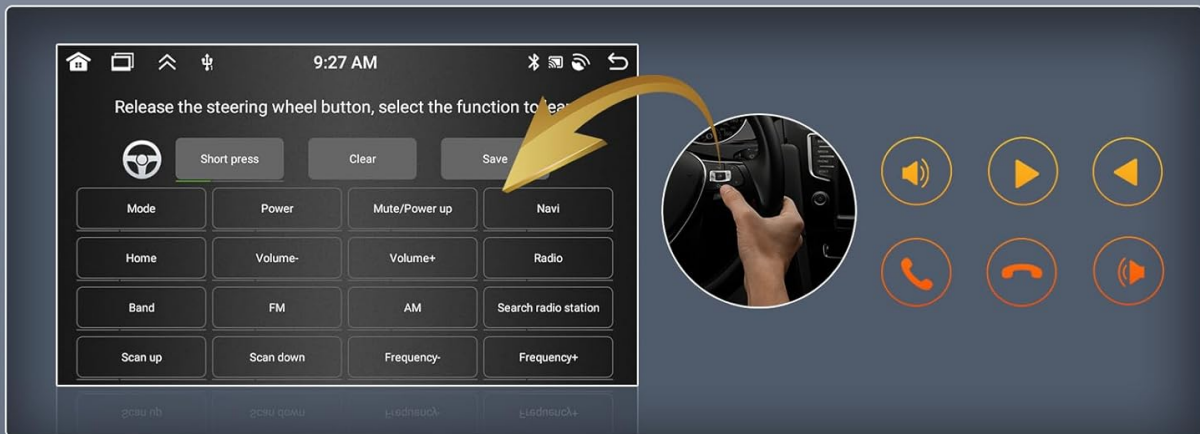


Figure 3.5: Bluetooth and FM/RDS Radio Functions

3.5 AHD Backup Camera

The unit is equipped with an AHD camera. When connected, the radio screen displays the rearview camera feed with parking guidelines when reversing.

Steering Wheel Control



AHD Reversing Image

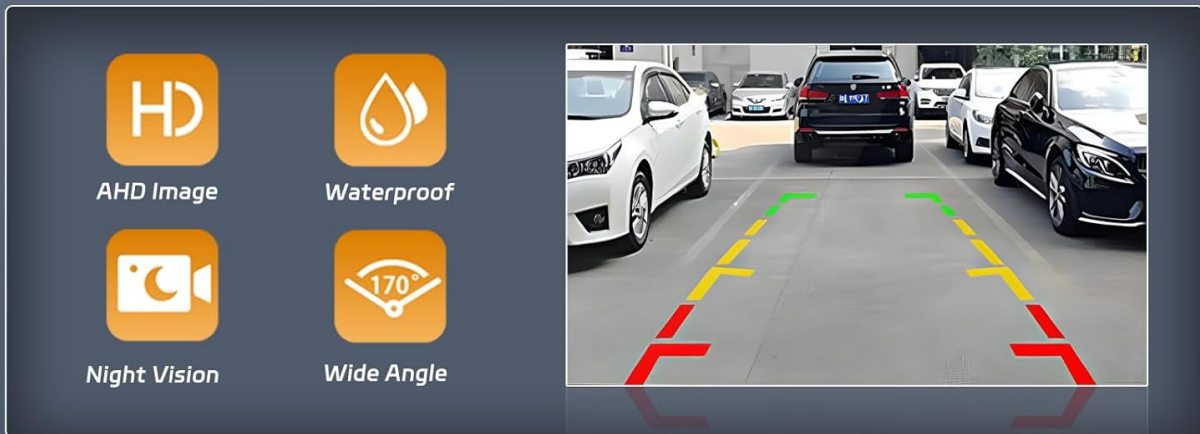


Figure 3.6: AHD Reversing Image Display

3.6 Customization

Personalize your stereo with 59 desktop themes and 19 wallpaper options. Long-press the main interface to switch themes or touch the color circle in the lower left corner to change backgrounds.

59 Desktop Themes



19 Wallpaper Options

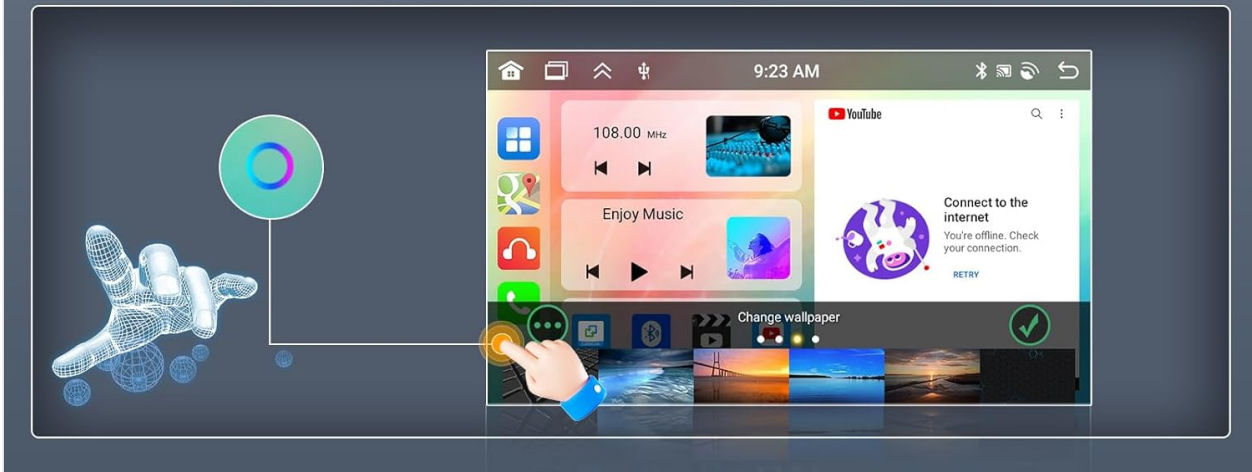


Figure 3.7: Desktop Themes and Wallpapers



Figure 3.8: App Switching Functionality

4. MAINTENANCE

4.1 Screen Care

To clean the touch screen, power off the unit and gently wipe it with a soft, lint-free cloth. Do not use abrasive cleaners or solvents, as they may damage the screen surface.

4.2 Software Updates

Periodically check for system software updates through the unit's settings menu (if available) to ensure optimal performance and access to the latest features. Ensure a stable internet connection during updates.

5. TROUBLESHOOTING

5.1 Common Issues

- **No Power:** Ensure all power cables are securely connected. Perform the quick test described in Section 2.5. Check vehicle fuses.
- **No Sound:** Verify speaker connections. Check volume levels on the unit and ensure the mute function is not active. If the radio has no sound but USB/phone audio works, check wiring to the amplifier or contact support.
- **Steering Wheel Controls Not Working:** Ensure CANBUS connections are correct (if applicable) and perform key learning in settings. Refer to Section 2.4.2.
- **Wireless CarPlay/Android Auto Connectivity Issues:** Ensure Bluetooth is enabled on both devices. Check WiFi hotspot connection. For some Samsung/Huawei phones, functionality may be limited.
- **GPS Signal Weak/Inaccurate:** Ensure the GPS antenna is properly installed and has a clear view of the sky.

5.2 Advanced Troubleshooting for Toyota Prius with OEM Navigation

For Prius models with an original equipment manufacturer (OEM) navigation system, specific adjustments may be required:

- **Steering Wheel Buttons:** Disconnect the two middle wires from the Inefala harness 6-pin connector that interfaces with the car. These wires may incorrectly short SW1/SW2 signals. The four outer wires (often green and purple) should remain connected.
- **OEM Backup Camera:** The product does not provide a kit to reuse the OEM backup camera due to voltage differences (OEM is 6V, aftermarket is 12V). You may need to purchase a separate 16-pin harness designed for OEM backup cameras with aftermarket head units and a 12V-to-6V converter.
- **Reverse Signal:** For OEM nav systems, the reverse signal can be tapped at the 24-pin connector (often a pink wire). You may need to splice wires to connect this to the unit's flying-lead reverse signal wire.
- **OEM GPS Antenna:** The product does not provide a cable to reuse the OEM GPS antenna. An HFC-to-SMA adapter may be needed to connect to the gray HFC connector in the car.
- **OEM Microphone:** The OEM microphone module requires active power supply. A retrofit kit may not be available; consider using the microphone included with this product.
- **Bluetooth and Wi-Fi Connectivity:** Ensure the short video dongle with two short wires (antennae for Bluetooth and Wi-Fi) is plugged in.
- **Camera and AUX Video Configuration (UJC201 systems):**
 - **Original Prius Backup Camera:** In Factory Setup (password: 1234) > Backcar Source Settings, select CVBS.
 - **Included Inefala Camera:** In Factory Setup (password: 1234) > Backcar Source Settings, select AHD 720P 25fps.
 - **Second Camera/Video Source:** Uncheck "Settings > Car Settings > Hand Brake Detection" to allow video display.
 - **CVBS Second Camera:** Plug into RCA harness's CVBS-IN-1 or AUX VIN connector and use the AUX app.
 - **AHD Second Camera:** Plug into RCA harness's F CAM or CVBS-IN-2 connector. Set "Factory Setup > Camera Type Settings" to Common and "Car Settings > External input video signal" to "Front video". Use the "Front video" app. Both AHD cameras may need the same resolution and refresh rate.

6. SPECIFICATIONS

Feature	Specification
Model Name	RM (B0CSSMSPQN)
Operating System	Android 15
Processor	8-Core
RAM	6GB
ROM	128GB
Screen Size	9 Inches
Screen Resolution	1280*720
Video Playback	1080P Support
Audio Equalizer	32-band EQ
Connectivity	Bluetooth 5.0, USB, Wi-Fi
Navigation	Built-in GPS, Worldwide Map Type
Special Features	Wireless/Wired CarPlay & Android Auto, Mirror Link, AHD Backup Camera Support, Steering Wheel Learning, FM/RDS Radio, Siri/Google Voice Assistant
Vehicle Service Type	Car (Toyota Prius 2010-2015 LHD with JBL)
Mounting Type	Dashboard Mount
Item Weight	3.05 pounds
Package Dimensions	12.01 x 6.77 x 4.57 inches

7. WARRANTY AND RETURNS

The product includes a 30-day refund/replacement policy. For specific warranty details beyond this period, please contact Inefala customer support directly.

8. CUSTOMER SUPPORT

For any questions, technical assistance, or support, please contact Inefala customer service. You can reach us via:

- **Amazon:** Visit the Inefala Direct store page and click "Ask a question."

- **Email:** inefalservices@163.com

Please provide relevant pictures or videos when describing your issue to help us resolve it efficiently. We aim to respond within 24 hours.



Figure 8.1: Customer Support Contact