

Manuals+

[Q & A](#) | [Deep Search](#) | [Upload](#)

Manuals.plus /

- › [Banral](#) /
- › Banral LED Rechargeable Flashlight T-K2301 User Manual

Banral T-K2301

Banral LED Rechargeable Flashlight T-K2301 User Manual

Model: T-K2301 | Brand: Banral

1. INTRODUCTION

Thank you for choosing the Banral T-K2301 LED Rechargeable Flashlight. This manual provides essential information for the safe and efficient operation, maintenance, and troubleshooting of your device. Please read it thoroughly before use and retain it for future reference.

The Banral T-K2301 is a high-performance LED flashlight designed for various applications, including outdoor activities, emergency situations, and general household use. It features a powerful 10,000 lumen output, multiple lighting modes, a zoomable beam, and IPX5 water resistance.



Image 1.1: Banral T-K2301 LED Rechargeable Flashlight and its packaging, highlighting key features like super bright, multiple modes, zoomable design, weather resistant, and drop resistant.

Anwendungsszenarien für superhelle Taschenlampen

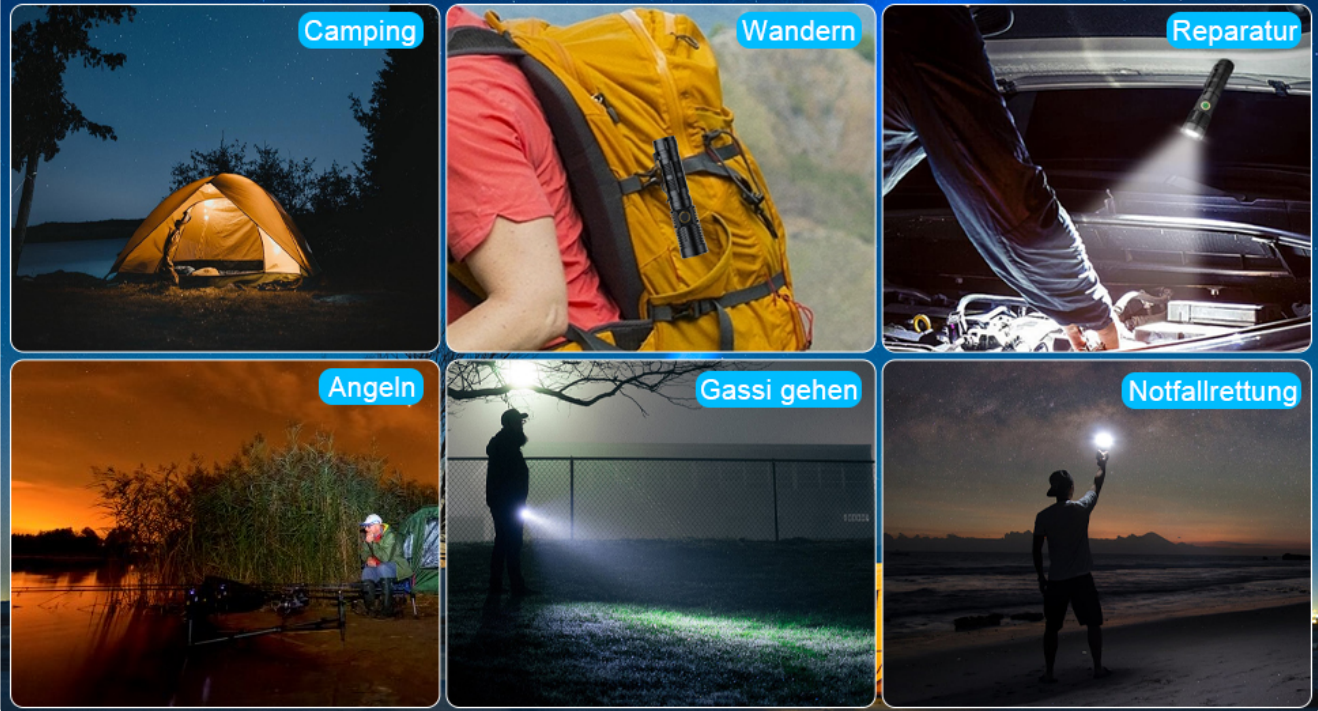


Image 1.2: The Banral T-K2301 flashlight being used in various scenarios including camping, hiking, car repair, fishing, walking, and emergency rescue, demonstrating its versatility.

2. PRODUCT OVERVIEW AND COMPONENTS

The Banral T-K2301 flashlight is constructed from durable aluminum and features a robust design. Familiarize yourself with its main parts:



Image 2.1: An exploded diagram showing the internal and external components of the flashlight, including the lens holder, tempered glass lens, power switch, USB-C port, removable clip, non-slip grip, and magnetic base. It also highlights features like heat

dissipation, robust head, non-slip grip, and waterproof rubber ring.

- **LED Chip:** High-brightness 20W LED.
- **Lens:** Tempered glass lens for optimal light transmission.
- **Power Switch:** Multi-function button for power and mode selection.
- **USB-C Port:** For charging the flashlight.
- **USB-A Output Port:** For power bank functionality.
- **Zoomable Head:** Allows adjustment between spotlight and floodlight.
- **Body:** Durable aluminum alloy with non-slip grip.
- **Pocket Clip:** Removable for convenient carrying.
- **Magnetic Base:** For hands-free operation on metallic surfaces.
- **Battery:** Integrated 3000mAh rechargeable lithium-ion battery.

3. SPECIFICATIONS

Feature	Specification
Brand	Banral
Model Number	K2301
Light Source	20W LED Chip
Luminosity	10,000 Lumens
Beam Distance	Up to 1000 meters (spotlight mode)
Battery Type	3000mAh Lithium-ion (included)
Charging Port	USB-C
Output Port	USB-A (Power Bank Function)
Operating Time	4-10 hours (depending on mode)
Charging Time	3-4 hours
Water Resistance	IPX5 (splash-proof, not submersible)
Material	Aluminum Alloy
Dimensions (L x W x H)	3.4 x 3.4 x 15 cm
Weight	204 grams
Special Features	Zoomable, Stepless Dimming, Magnetic Base, Power Bank Function, Overcharge Protection

4. SETUP

4.1. Initial Charge

Before first use, fully charge the flashlight. The flashlight comes with a pre-installed rechargeable battery.

1. Locate the USB-C charging port on the flashlight body. It is usually covered by a rubber flap for water resistance.
2. Connect the provided USB-C charging cable to the flashlight's USB-C port.
3. Connect the other end of the cable to a USB power source (e.g., wall adapter, power bank, computer USB port).
4. The power button LED indicator will glow **red** during charging.
5. Once fully charged (approximately 3-4 hours), the indicator will turn **green**.
6. Disconnect the charging cable and ensure the rubber flap is securely closed to maintain water resistance.



Image 4.1: Illustration of the Banral T-K2301 flashlight's 3000mAh battery capacity and charging status indicators. The power button glows red when charging and green when fully charged, with an estimated usage time of 4-10 hours.



Image 4.2: Diagram showing the USB-C input for charging the flashlight from various sources (wall adapter, power bank, car charger, laptop) and the USB-A output for using the flashlight as an emergency power bank to charge other devices like phones, headphones, or small fans.

5. OPERATING INSTRUCTIONS

5.1. Power On/Off and Mode Selection

The flashlight features 4 lighting modes and a stepless dimming function.

1. **Power On:** Press the power button once to turn on the flashlight. It will typically start in High mode.
2. **Cycle Modes:** With the flashlight on, press the power button repeatedly to cycle through the modes: High → Medium → Strobe → SOS.
3. **Power Off:** If the flashlight has been in any mode for more than 5 seconds, a single press of the power button will turn it off directly. Otherwise, cycle through modes until it turns off or press and hold for 3 seconds (see Stepless Dimming).

10000 Lumen Extrem Helle Taschenlampe

Verbesserter **20W** LED Chip, hellere Ausleuchtung, stärkere Durchdringung, größere Bestrahlungsdistanz



Image 5.1: Visual representation of the four light modes (High, Medium, Strobe, SOS) and the stepless dimming function (100%-5%-100%). It also shows how a quick double-click activates a super bright mode and a single click after 5 seconds turns off the light.

5.2. Stepless Dimming

To adjust brightness continuously:

1. With the flashlight on, press and hold the power button for approximately 3 seconds. The brightness will begin to cycle from 100% down to 5% and then back up to 100%.
2. Release the button when the desired brightness level is reached.
3. The flashlight has a memory function for the stepless dimming mode; it will turn on at the last set brightness if turned off by holding the button.

Einstellbare Helligkeit für unterschiedliche Anforderungen

4 Modi+Stufenloses Dimmen



Image 5.2: Demonstrates the adjustable brightness settings, including High, Medium, Strobe, SOS, and the stepless dimming feature, illustrating how the flashlight can adapt to various lighting needs.

5.3. Zoom Function

The flashlight features a zoomable head to adjust the beam from a wide floodlight to a focused spotlight.

1. To zoom in (spotlight), gently push the head of the flashlight forward. This concentrates the beam for long-distance illumination (up to 1000m).
2. To zoom out (floodlight), gently pull the head of the flashlight backward. This widens the beam for illuminating a larger area (e.g., 200 square meters).

3000mAH Akku Kapazität

Nutzungszeit:
4-10
Stunden



Aufladen



Ladevorgang abgeschlossen

Aufladezeit: 3-4 Stunden

Nutzungszeit: **4-10** Stunden



Überladungsschutz



Überentladungsschutz



Überspannungsschutz



Langlebige Zyklen

Image 5.3: Illustrates the zoomable design of the flashlight, showing how to adjust the beam from a wide floodlight (zoom out) to a focused spotlight (zoom in) for different illumination requirements.

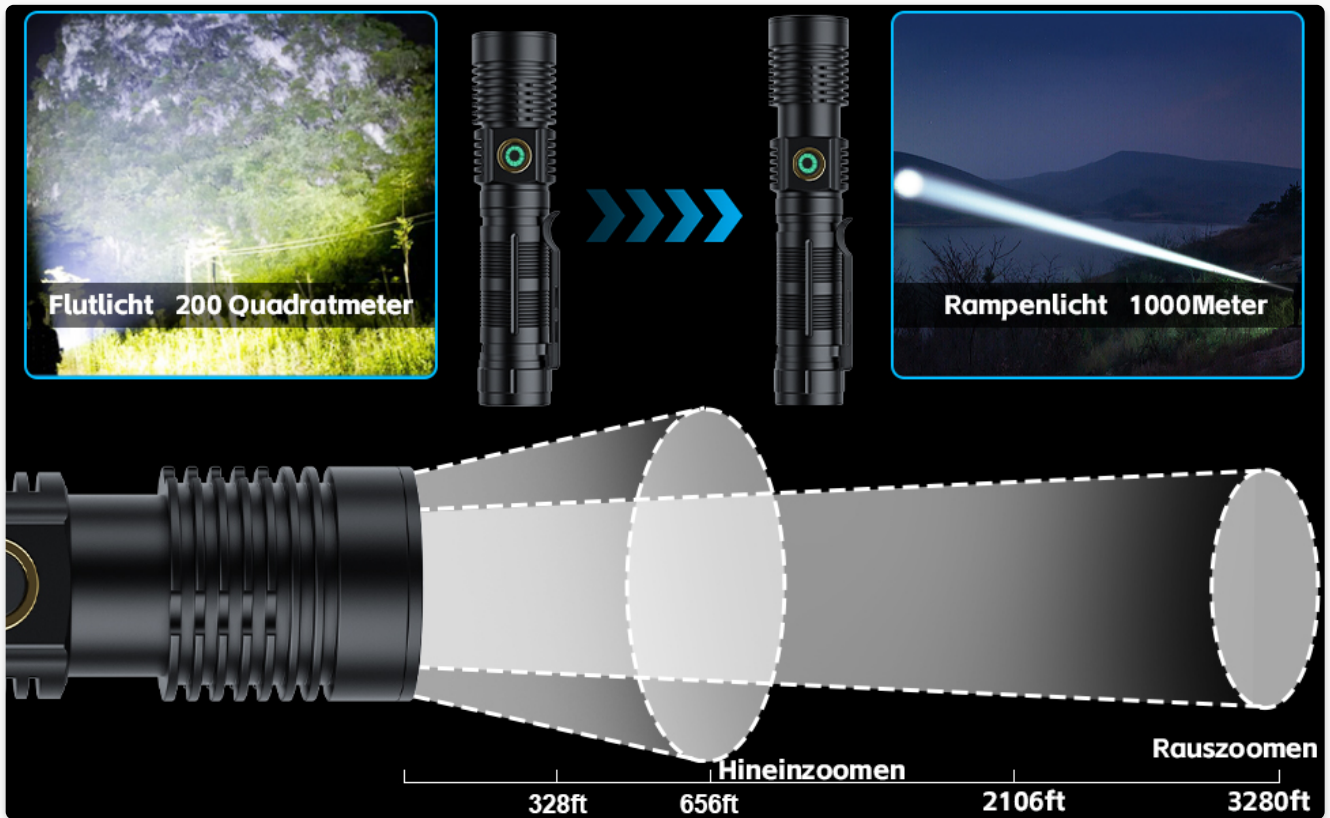


Image 5.4: Compares the floodlight mode, covering a wide area of 200 square meters, with the spotlight mode, which can reach up to 1000 meters, demonstrating the flashlight's adjustable focus.

5.4. Power Bank Function

The flashlight can serve as an emergency power bank to charge other small electronic devices.

1. Open the rubber flap covering the USB ports.
2. Connect your device's charging cable to the USB-A output port on the flashlight.
3. The flashlight will begin charging your device.
4. Remember to close the rubber flap after use to protect the ports from dust and water.

5.5. Magnetic Base

The flashlight features a powerful magnetic base for hands-free operation.

- Attach the magnetic base to any ferrous metal surface (e.g., car hood, metal cabinet, electrical panel).
- This allows you to direct light while keeping both hands free for tasks like repairs or inspections.

IPX5 Wasserdicht



Image 5.5: Demonstrates the magnetic base feature of the Banral T-K2301 flashlight, showing it attached to a car hood and an electrical panel, providing hands-free illumination for repair work.

6. MAINTENANCE

6.1. Cleaning

- Wipe the flashlight body with a soft, damp cloth.
- Do not use abrasive cleaners or solvents, as they may damage the finish or internal components.
- Clean the lens gently with a lens cloth to maintain optimal light output.

6.2. Storage

- Store the flashlight in a cool, dry place away from direct sunlight and extreme temperatures.
- If storing for an extended period, charge the battery every 3-6 months to prolong its lifespan.

6.3. Water Resistance (IPX5)

The Banral T-K2301 flashlight is rated IPX5, meaning it is protected against low-pressure water jets from any

direction. This makes it suitable for use in rain or snowy conditions.

- **Do NOT immerse the flashlight in water.** IPX5 protection does not cover submersion.
- Ensure all rubber seals and port covers are securely closed before exposing the flashlight to moisture.



Image 6.1: The Banral T-K2301 flashlight demonstrating its IPX5 water resistance, showing it being splashed with water. Icons indicate protection against water, snow, and pressure.

7. TROUBLESHOOTING

Problem	Possible Cause	Solution
Flashlight does not turn on.	Battery is depleted.	Charge the flashlight fully using the provided USB-C cable.
Flashlight does not charge.	Charging cable or adapter is faulty. Charging port is obstructed.	Try a different USB-C cable and power adapter. Ensure the charging port is clean and free of debris.

Problem	Possible Cause	Solution
Light output is dim or inconsistent.	Low battery. Lens is dirty.	Recharge the flashlight. Clean the lens with a soft cloth.
Zoom function is stiff.	Dust or debris in the mechanism.	Gently clean the area around the zoom mechanism. Avoid forcing it.
Power bank function not working.	Flashlight battery is too low. Cable or device is incompatible.	Ensure the flashlight is sufficiently charged. Try a different charging cable or device.

If you encounter issues not listed here or if the problem persists after attempting the solutions, please contact customer support.

8. SAFETY INFORMATION

- **Do not look directly into the LED light.** The high intensity light can cause temporary vision impairment or permanent eye damage.
- Keep out of reach of children.
- Do not disassemble or modify the flashlight. This may cause damage, void the warranty, and pose a safety risk.
- Do not expose the flashlight to fire or extreme heat.
- Use only the provided or recommended charging cables and adapters.
- Dispose of the battery according to local regulations. Do not dispose of batteries in household waste.

9. WARRANTY AND SUPPORT

Banral provides excellent customer service for all its products.

- **1-Year Replacement Warranty:** Your Banral T-K2301 flashlight is covered by a 1-year replacement warranty from the date of purchase.
- **30-Day Money-Back Guarantee:** If you are not satisfied with your purchase, you may be eligible for a 30-day money-back guarantee.

For any issues, questions, or support needs regarding your Banral flashlight, please do not hesitate to contact us. We aim to respond to all inquiries within 24 hours.

For customer support, please refer to the contact information provided with your purchase or visit the official Banral website.

