

## iDOO -D-01

# iDOO Hydroponic Growing System User Manual

Model: -D-01

Brand: iDOO

## 1. INTRODUCTION AND OVERVIEW

The iDOO Hydroponic Growing System is an intelligent indoor gardening solution designed to cultivate plants without soil, providing fresh herbs, vegetables, and flowers year-round. This system features a 20-pod capacity, adjustable LED grow lights that simulate natural sunlight, and an automatic timing function for optimal plant growth. Its modular design allows for flexible placement and easy maintenance, making it suitable for various indoor environments.



**Figure 1.1:** The iDOO Hydroponic Growing System with thriving basil and tomato plants, showcasing its capacity for diverse plant cultivation.

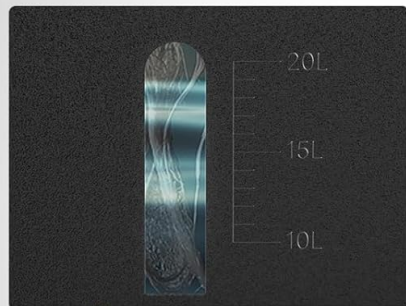
## 2. COMPONENTS

Before assembly, ensure all components listed below are present and undamaged:

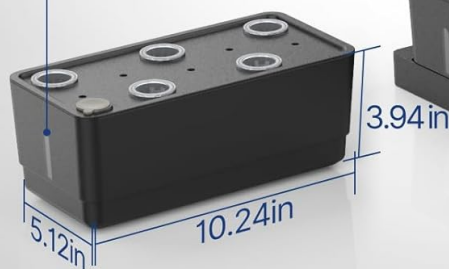
- LED Grow Light Panel
- Adjustable Height Poles (for light panel)
- Water Tanks (4 individual tanks)
- Plant Pods (20 pods)
- Base Tray
- Control Panel with Timer
- Power Adapter

# Height-Adjustable Garden Farm

Adjustable Height up to 70cm



Visual window



**Figure 2.1:** Exploded view of the iDOO Hydroponic System, illustrating its adjustable height feature and key components like the water tanks and light panel. Dimensions are shown for reference.

## 3. SETUP

Follow these steps to assemble your iDOO Hydroponic Growing System:

1. **Unpack Components:** Carefully remove all parts from the packaging and place them on a clean, flat surface.
2. **Assemble Base:** Place the base tray on your desired location. Insert the four individual water tanks into the designated slots on the base tray.
3. **Attach Support Poles:** Securely insert the adjustable height poles into the corresponding holes on the base tray.
4. **Mount LED Light Panel:** Attach the LED grow light panel to the top of the adjustable poles. Ensure it is firmly seated.
5. **Insert Plant Pods:** Place the empty plant pods into the openings on top of each water tank.
6. **Connect Power:** Plug the power adapter into the control panel, then connect the control panel to the LED grow light. Finally, plug the power adapter into a standard electrical outlet.



# HAVE A GARDEN FARM INDOOR



**Figure 3.1:** The iDOO Hydroponic System fully assembled and ready for use in an indoor setting, demonstrating its compact and aesthetic design.

## 4. OPERATING INSTRUCTIONS

### 4.1. Watering and Nutrient Management

The iDOO system utilizes a passive hydroponic method. Each of the four water tanks has a capacity of approximately 5 liters, totaling 20 liters for the entire system. A visual window on each tank allows for easy monitoring of the water level.

- **Filling Water:** Fill each water tank with clean water up to the indicated maximum level.
- **Adding Nutrients:** Add appropriate hydroponic nutrient solution to the water according to the nutrient manufacturer's instructions. The specific ratio will depend on the type of plants you are growing.
- **Monitoring Water Level:** Regularly check the water level through the visual window. Refill as needed to ensure plants have continuous access to water and nutrients.



# A MAGICAL GIFT FOR CHILDREN

Watching the Growth of Plants

**Figure 4.1:** A close-up view of the water tank, highlighting the visual window and measurement markings for convenient water level monitoring.

## 4.2. LED Grow Light Operation

The multi-purpose LED grow light simulates the full spectrum of sunlight, promoting photosynthesis and optimal growth for your plants. It features red, blue, and white LEDs:

- **Red Light:** Promotes flowering and fruiting.
- **Blue Light:** Encourages leaf growth and overall plant vigor.
- **White Light:** Balances the red and blue spectrums for comprehensive growth.

The system includes a customizable timer to control the lighting cycle:

- **Setting the Timer:** Use the 'Timer' button on the control panel to select your desired lighting duration. The default and recommended cycle is 16 hours ON and 8 hours OFF.
- **Power Button:** Use the 'Power' button to manually turn the lights ON or OFF.





**Figure 4.2:** The control panel for the LED grow light, showing the 'Timer' and 'Power' buttons and a digital display for setting the lighting schedule.

# Simulate the Sunlight Spectrum Grow Lights

- RED LIGHT  
Increase more flowers and fruits
- BLUE LED LIGHT  
Generate more leaves, bigger farm
- WHITE LIGHT  
Balance the red & blue light



**Figure 4.3:** The LED grow light panel illuminating plants, demonstrating the combination of red, blue, and white lights to simulate a full sunlight spectrum.

## 4.3. Adjusting Light Height

As your plants grow, adjust the height of the LED light panel to maintain an optimal distance from the plant canopy. The maximum adjustable height is approximately 68 cm (26.8 inches). This ensures plants receive adequate light intensity throughout their growth stages.

## 4.4. Planting

The system uses removable self-watering plant pots, allowing for easy planting and relocation of individual plants.

- **Seed Starting:** Place seeds into the provided growing medium within the plant pods.
- **Transplanting:** If transplanting seedlings, gently place them into the plant pods, ensuring the roots are submerged in the water tank.
- **Placement:** Insert the filled plant pods into the openings on the water tanks. The modular design allows you to arrange them as desired.

# Removable Self-watering Plant Potted

Place on the balcony, bedroom, outdoor, enjoying nature



**Figure 4.4:** A hand demonstrating the removability of a self-watering plant pot, highlighting the system's flexibility for plant management.



**Figure 4.5:** A close-up of a plant pod, showing the healthy root development, which is crucial for nutrient absorption in hydroponic systems.

## 5. MAINTENANCE

Regular maintenance ensures the longevity and optimal performance of your hydroponic system:

- **Water Changes:** It is recommended to change the water and replenish nutrients every 1-2 weeks, or



as advised by your nutrient solution manufacturer, to prevent nutrient imbalances and algae growth.

- **Cleaning Components:** Periodically clean the water tanks and plant pods to remove any residue or algae buildup. Use mild soap and water, then rinse thoroughly.
- **Plant Health Check:** Regularly inspect your plants for signs of pests, diseases, or nutrient deficiencies. Address any issues promptly.
- **Pruning:** Prune your plants as needed to encourage bushier growth and prevent overcrowding, especially for leafy greens and herbs.

## 6. TROUBLESHOOTING

Here are some common issues and their potential solutions:

Problem	Possible Cause	Solution
Plants not growing or wilting	Insufficient light, incorrect nutrient levels, low water level, incorrect pH.	Adjust light height, check and adjust nutrient concentration, refill water, test and adjust water pH.
LED lights not turning on	Power adapter disconnected, timer not set correctly, faulty connection.	Ensure power adapter is securely plugged in, verify timer settings, check all cable connections.
Algae growth in water tanks	Excess light exposure to water, infrequent water changes.	Ensure plant pods cover openings completely, perform regular water changes and clean tanks.
Plants show signs of nutrient deficiency (e.g., yellowing leaves)	Incorrect nutrient concentration, nutrient lockout due to pH imbalance.	Adjust nutrient solution strength, test and adjust water pH to the recommended range for hydroponics (typically 5.5-6.5).
System lacks water aeration (no pump)	This model is a passive hydroponic system and does not include an air pump.	For plants that require higher oxygen levels in the root zone, consider adding a small air pump and air stone (not included) to the water tanks.

## 7. SPECIFICATIONS

- **Brand:** iDOO
- **Model Number:** -D-01
- **Color:** Black
- **Product Dimensions:** 62.4 x 18.4 x 31.4 cm (24.6 x 7.2 x 12.4 inches)
- **Product Weight:** 4.2 kg (9.26 lbs)
- **Water Volume Capacity:** 20 Liters (total, across 4 tanks)
- **Voltage:** 12 Volts
- **Material:** Plastic
- **Special Features:** Adjustable height (up to 68 cm / 26.8 inches), modular design, LED grow light with customizable timer.




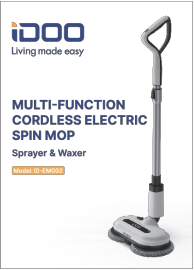
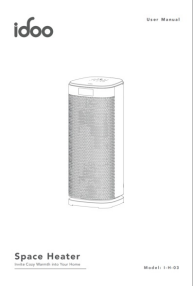
- **Components Included:** 4 water tanks, 20 plant pots.

## 8. WARRANTY AND SUPPORT

For information regarding product warranty, returns, or technical support, please refer to the manufacturer's official website or contact iDOO customer service directly. Keep your purchase receipt as proof of purchase.

© 2024 iDOO. All rights reserved.

### Related Documents - -D-01

	<p><a href="#">iDOO Indoor Gardening Kit User Manual</a></p> <p>Comprehensive user manual for the iDOO Indoor Gardening Kit (Model: I-D-01), covering setup, operation, maintenance, and tips for successful indoor hydroponic gardening.</p>
	<p><a href="#">iDoo Indoor LED Hydroponic System Setup Guide (Model: ID-IG201)</a></p> <p>A comprehensive setup guide for the iDoo Indoor LED Hydroponic System, Model ID-IG201. Learn about included components, operation procedures, safety instructions, specifications, control panel settings, gardening tips, troubleshooting, and warranty information.</p>
	<p><a href="#">iDOO Smart Indoor LED Hydroponic System User Manual</a></p> <p>User manual for the iDOO Smart Indoor LED Hydroponic System, Model ID-IG301S. Includes safety instructions, product overview, specifications, package contents, installation, operation, app instructions, product maintenance, and FAQs.</p>
	<p><a href="#">iDoo ID-EM002 Multi-Function Cordless Electric Spin Mop: User Manual &amp; Specifications</a></p> <p>Comprehensive user manual and specifications for the iDoo ID-EM002 cordless electric spin mop, featuring sprayer and waxer functions. Includes installation, operation, troubleshooting, and customer service information.</p>
	<p><a href="#">idoo Space Heater User Manual (Model I-H-03)</a></p> <p>Comprehensive user manual for the iDOO Space Heater (Model I-H-03), covering essential safety instructions, product specifications, detailed operation guides for the control panel and remote, cleaning and maintenance procedures, troubleshooting tips, and warranty information. Learn how to safely and effectively use your iDOO heater.</p>

User Manual **iDOO**  
Living made easy  
Ceramic Space  
Heater - Power  
Model: I-C-027



### [iDOO Ceramic Space Heater - Power \(Model I-C-027\) User Manual](#)

Comprehensive user manual for the iDOO Ceramic Space Heater - Power, model I-C-027. Includes safety instructions, product specifications, operating guide, troubleshooting, and warranty information.