

JUBEST OJC101-YGD01

JUBEST 36" x 84" Wave-Shape Barn Door Instruction Manual

Model: OJC101-YGD01

1. IMPORTANT SAFETY INFORMATION

Read all instructions carefully before installation and use. Failure to follow these instructions may result in injury or product damage.

- Always ensure the mounting surface is structurally sound. For drywall installations, solid wood blocking is required to provide a secure mounting surface for the track.
- Use appropriate tools and safety gear during installation.
- This barn door is heavy. Two people are recommended for safe handling and installation.
- Ensure all hardware is securely fastened before operating the door.
- Keep children and pets away from the installation area.

2. PACKAGE CONTENTS

Verify that all components listed below are present and undamaged before beginning installation.



Figure 2.1: Included components for the JUBEST barn door kit.

- Door Panel (36" W x 84" H)
- Sliding Track (72" length)
- Roller Hangers (2 units)
- Door Handle
- Floor Guides (2 types available)
- Anti-jump Disks
- Door Stoppers
- Wall Spacers
- Fasteners and Wrenches

3. PRODUCT SPECIFICATIONS

Model Number	OJC101-YGD01
--------------	--------------

Door Panel Dimensions	36" W x 84" H
Door Thickness	1 3/8"
Track Length	72"
Material	Solid Wood, MDF, PVC Covered (Door Panel); Carbon Steel (Hardware)
Color	Black
Item Weight	47 pounds
Product Dimensions (Overall)	84 x 12 x 3 inches



Figure 3.1: Detailed dimensions of the barn door and hardware.

4. INSTALLATION INSTRUCTIONS

The JUBEST barn door kit is designed for straightforward installation. Follow these steps carefully for optimal

performance and safety.

Easy Installation

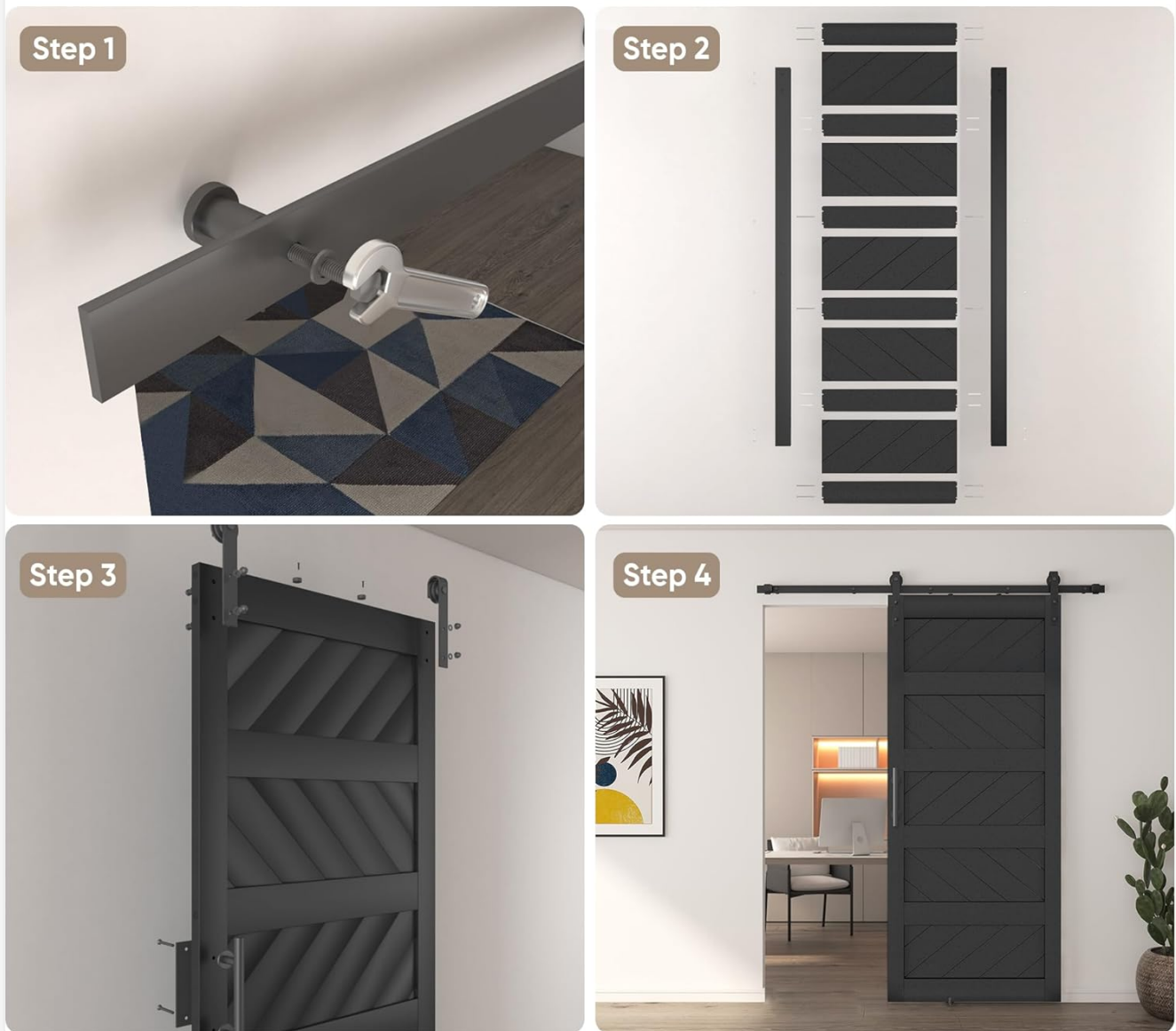


Figure 4.1: Overview of the easy installation process.

1. Step 1: Prepare the Wall and Mount the Track

Identify stud locations. If installing into drywall, install a solid wood blocking board (not included) across the opening to provide a secure mounting surface for the track. Attach the carbon steel sliding track to the wall using the provided fasteners. Ensure the track is level and securely anchored.

2. Step 2: Assemble the Door Panel

Assemble the door panel components according to the detailed instructions provided in the physical manual. The wave-shape panels are designed for easy assembly.

3. Step 3: Attach Rollers and Handle to Door

Securely attach the roller hangers to the top edge of the assembled door panel. Install the door handle on the desired side of the door.

4. Step 4: Hang the Door and Install Floor Guides

Carefully lift the door panel and hang the rollers onto the mounted track. Install the floor guides at the bottom of the door opening to prevent the door from swinging. Adjust door stoppers on the track to control the door's travel distance.

For detailed step-by-step instructions, refer to the included paper manual.

5. OPERATION

The JUBEST barn door is designed for smooth and quiet operation. To open or close the door, gently slide it along the track using the handle. The carbon steel hardware ensures a fluid motion.



Figure 5.1: The JUBEST barn door in an open position, demonstrating its sliding functionality.

Ensure the path of the door is clear of obstructions before sliding. The door stoppers on the track will prevent the door from sliding too far.

6. MAINTENANCE

Regular maintenance will help preserve the appearance and functionality of your barn door.

- **Cleaning:** The PVC-covered surface of the door panel is waterproof and easy to clean. Use a soft, damp cloth to wipe down the door and hardware. Avoid abrasive cleaners or harsh chemicals that could damage the

finish.

- **Hardware Check:** Periodically inspect all screws and fasteners on the track and rollers to ensure they remain tight. Tighten any loose components to maintain smooth operation and safety.
- **Track Lubrication:** If the door's movement becomes less smooth over time, a small amount of silicone-based lubricant can be applied to the track and roller wheels.



**PVC surface,
easy clean & waterproof**



MDF Material, sturdy & durable



**Two types of floor
guide are available**



Figure 6.1: The PVC surface allows for easy cleaning with a damp cloth.

7. TROUBLESHOOTING

If you encounter any issues with your JUBEST barn door, refer to the following common problems and solutions:

- **Door does not slide smoothly:**
 - Check if the track is level. Adjust if necessary.
 - Inspect the rollers for any debris or damage. Clean or replace if needed.
 - Ensure all track fasteners are tight.

- Apply a silicone-based lubricant to the track and rollers.
- **Door is difficult to move:**
 - Verify that the floor guides are properly aligned and not causing friction.
 - Ensure there are no obstructions in the door's path.
- **Door swings away from the wall:**
 - Confirm that the floor guides are correctly installed and adjusted.

8. WARRANTY AND CUSTOMER SUPPORT

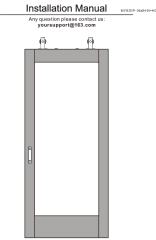
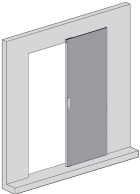
JUBEST is committed to providing high-quality products and excellent customer service.

- For any quality problems, missing parts, or installation issues, please contact our professional customer service team.
- Our customer service team is available to assist you. Refer to your purchase documentation for contact details.



© 2025 JUBEST. All rights reserved.

Related Documents - OJC101-YGD01

	<p>JUBEST MYSD1P-36x84IN Sliding Barn Door Installation Manual</p> <p>Comprehensive installation guide for the JUBEST MYSD1P-36x84IN sliding barn door hardware kit, including tools required, hardware list, and step-by-step assembly instructions.</p>
	<p>JUBEST 36x84 Inch Hidden Barn Door Installation Manual</p> <p>Comprehensive installation guide for the JUBEST YCM07-36x84IN+HD Hidden Barn Door hardware kit. Includes tools, parts list, and detailed step-by-step instructions for assembly and mounting.</p>

	<p>JUBEST 42x84 Inch Hidden Barn Door Installation Manual</p> <p>Comprehensive installation guide for the JUBEST 42x84 inch Hidden Barn Door hardware system. Includes a detailed parts list, required tools, and step-by-step instructions with diagrams described in text for easy assembly.</p>
	<p>Barn Door Hardware Kit Installation Guide - WF-TSQ14BK-6FT+TKM02-F</p> <p>Detailed installation guide for the WF-TSQ14BK-6FT+TKM02-F Barn Door Hardware Kit by JuBest, covering component identification, tools required, and step-by-step instructions for concrete and drywall installation.</p>
	<p>TSQAL22-38IN Concealed Barn Door Hardware Installation Manual</p> <p>Detailed installation guide for the JUBEST TSQAL22-38IN concealed barn door hardware kit, featuring a soft close mechanism and wall-mounted invisible sliding track. Includes component lists, preparation steps, and assembly instructions for 42-inch doors.</p>
	<p>30x84 Inch Hidden Barn Door Installation Manual - JUBEST</p> <p>Step-by-step installation guide for the JUBEST 30x84 inch hidden barn door hardware kit, including tools required, parts list, and assembly instructions.</p>